



Full wwPDB X-ray Structure Validation Report ⓘ

Feb 10, 2019 – 07:09 AM EST

PDB ID : 6AUU
Title : Structure of rat neuronal nitric oxide synthase heme domain in complex with 6-(3-(3-(dimethylamino)propyl)-5-(trifluoromethyl)phenethyl)-4-methylpyridin-2-amine
Authors : Li, H.; Poulos, T.L.
Deposited on : 2017-09-01
Resolution : 1.85 Å(reported)

This is a Full wwPDB X-ray Structure Validation Report for a publicly released PDB entry.

We welcome your comments at validation@mail.wwpdb.org

A user guide is available at

<https://www.wwpdb.org/validation/2017/XrayValidationReportHelp>

with specific help available everywhere you see the ⓘ symbol.

The following versions of software and data (see [references ⓘ](#)) were used in the production of this report:

MolProbity : 4.02b-467
Mogul : 1.7.3 (157068), CSD as539be (2018)
Xtriage (Phenix) : 1.13
EDS : rb-20031633
Percentile statistics : 20171227.v01 (using entries in the PDB archive December 27th 2017)
Refmac : 5.8.0158
CCP4 : 7.0 (Gargrove)
Ideal geometry (proteins) : Engh & Huber (2001)
Ideal geometry (DNA, RNA) : Parkinson et al. (1996)
Validation Pipeline (wwPDB-VP) : rb-20031633

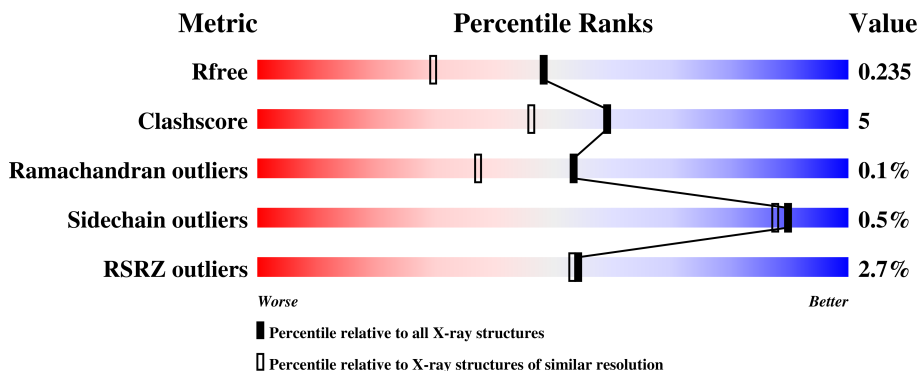
1 Overall quality at a glance

The following experimental techniques were used to determine the structure:

X-RAY DIFFRACTION

The reported resolution of this entry is 1.85 Å.

Percentile scores (ranging between 0-100) for global validation metrics of the entry are shown in the following graphic. The table shows the number of entries on which the scores are based.



Metric	Whole archive (#Entries)	Similar resolution (#Entries, resolution range(Å))
R_{free}	111664	2111 (1.86-1.86)
Clashscore	122126	2258 (1.86-1.86)
Ramachandran outliers	120053	2234 (1.86-1.86)
Sidechain outliers	120020	2234 (1.86-1.86)
RSRZ outliers	108989	2075 (1.86-1.86)

The table below summarises the geometric issues observed across the polymeric chains and their fit to the electron density. The red, orange, yellow and green segments on the lower bar indicate the fraction of residues that contain outliers for ≥ 3 , 2, 1 and 0 types of geometric quality criteria. A grey segment represents the fraction of residues that are not modelled. The numeric value for each fraction is indicated below the corresponding segment, with a dot representing fractions $\leq 5\%$. The upper red bar (where present) indicates the fraction of residues that have poor fit to the electron density. The numeric value is given above the bar.

Mol	Chain	Length	Quality of chain
1	A	422	 4% 84% 13% ••
1	B	422	 % 91% 6% •

2 Entry composition [i](#)

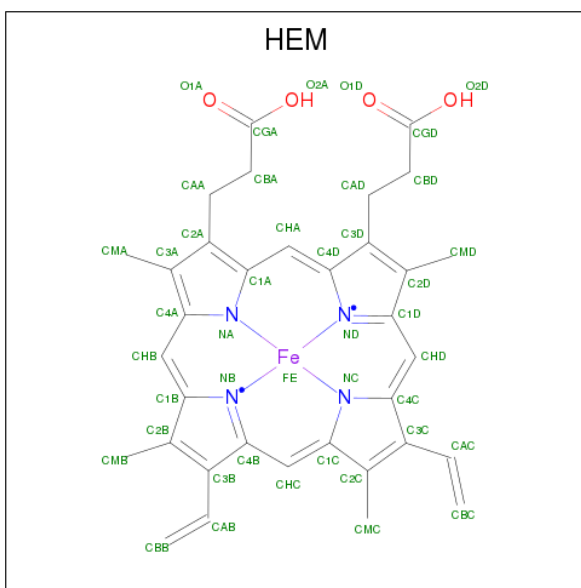
There are 9 unique types of molecules in this entry. The entry contains 7307 atoms, of which 0 are hydrogens and 0 are deuteriums.

In the tables below, the ZeroOcc column contains the number of atoms modelled with zero occupancy, the AltConf column contains the number of residues with at least one atom in alternate conformation and the Trace column contains the number of residues modelled with at most 2 atoms.

- Molecule 1 is a protein called Nitric oxide synthase, brain.

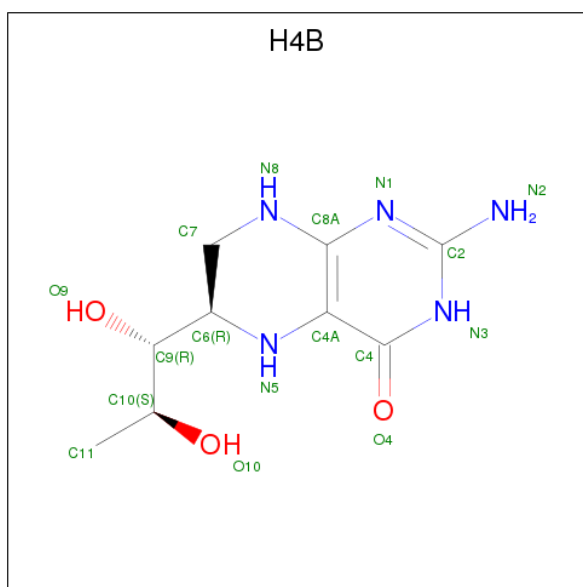
Mol	Chain	Residues	Atoms					ZeroOcc	AltConf	Trace
			Total	C	N	O	S			
1	A	410	Total 3348	C 2142	N 572	O 612	S 22	0	3	0
1	B	411	Total 3357	C 2148	N 574	O 614	S 21	0	3	0

- Molecule 2 is PROTOPORPHYRIN IX CONTAINING FE (three-letter code: HEM) (formula: $C_{34}H_{32}FeN_4O_4$).



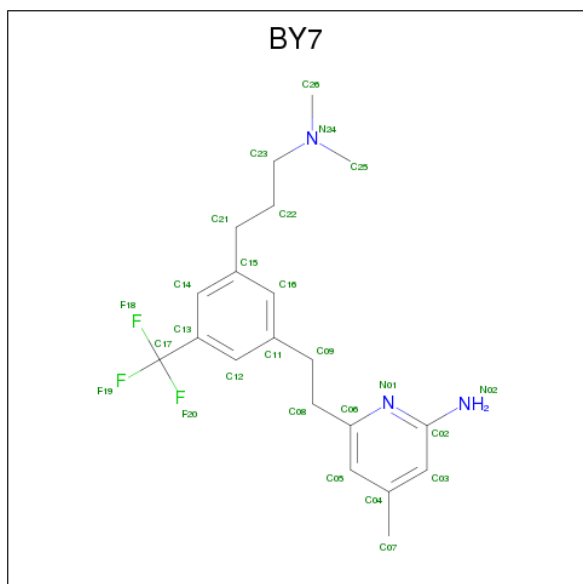
Mol	Chain	Residues	Atoms					ZeroOcc	AltConf
			Total	C	Fe	N	O		
2	A	1	Total 43	C 34	Fe 1	N 4	O 4	0	0
2	B	1	Total 43	C 34	Fe 1	N 4	O 4	0	0

- Molecule 3 is 5,6,7,8-TETRAHYDROBIOPTERIN (three-letter code: H4B) (formula: $C_9H_{15}N_5O_3$).



Mol	Chain	Residues	Atoms				ZeroOcc	AltConf
3	A	1	Total	C	N	O	0	0
			17	9	5	3		
3	B	1	Total	C	N	O	0	0
			17	9	5	3		

- Molecule 4 is 6-(2-{3-[3-(dimethylamino)propyl]-5-(trifluoromethyl)phenyl}ethyl)-4-methylpyridin-2-amine (three-letter code: BY7) (formula: C₂₀H₂₆F₃N₃).



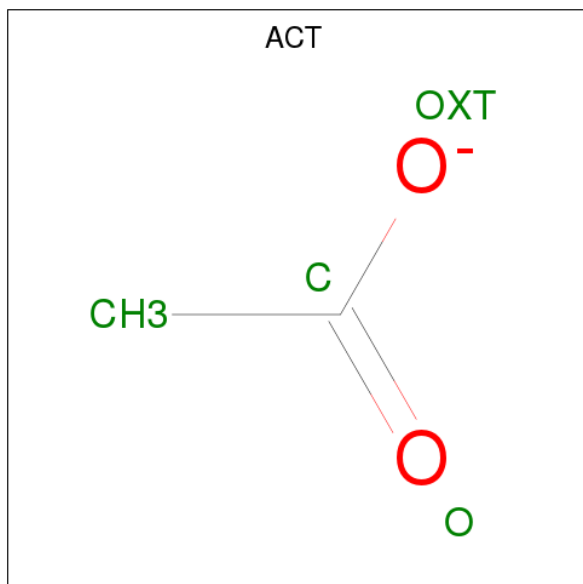
Mol	Chain	Residues	Atoms				ZeroOcc	AltConf
4	A	1	Total	C	F	N	0	0
			26	20	3	3		

Continued on next page...

Continued from previous page...

Mol	Chain	Residues	Atoms				ZeroOcc	AltConf
			Total	C	F	N		
4	B	1	26	20	3	3	0	0

- Molecule 5 is ACETATE ION (three-letter code: ACT) (formula: C₂H₃O₂).



Mol	Chain	Residues	Atoms			ZeroOcc	AltConf
			Total	C	O		
5	A	1	4	2	2	0	0
5	B	1	4	2	2	0	0

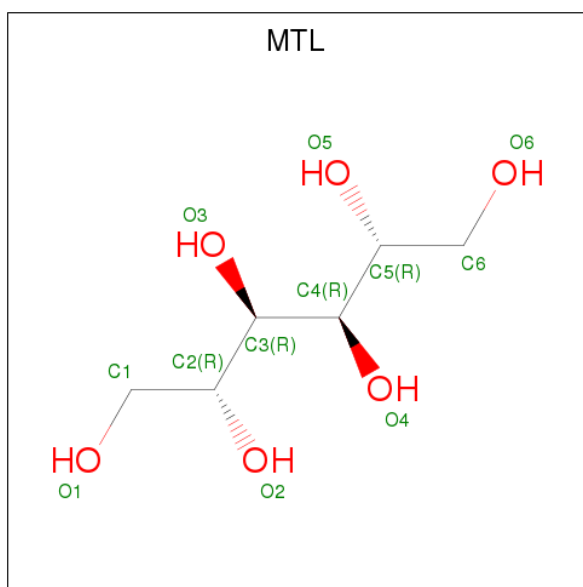
- Molecule 6 is CHLORIDE ION (three-letter code: CL) (formula: Cl).

Mol	Chain	Residues	Atoms		ZeroOcc	AltConf
			Total	Cl		
6	B	1	1	1	0	0
6	A	1	1	1	0	0

- Molecule 7 is ZINC ION (three-letter code: ZN) (formula: Zn).

Mol	Chain	Residues	Atoms		ZeroOcc	AltConf
			Total	Zn		
7	A	1	1	1	0	0

- Molecule 8 is D-MANNITOL (three-letter code: MTL) (formula: C₆H₁₄O₆).



Mol	Chain	Residues	Atoms			ZeroOcc	AltConf
8	B	1	Total	C	O	0	0
			12	6	6		

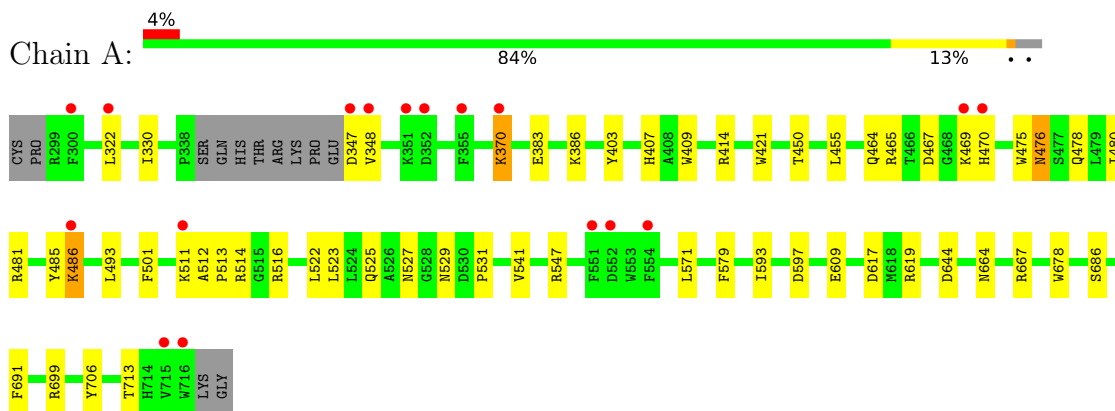
- Molecule 9 is water.

Mol	Chain	Residues	Atoms		ZeroOcc	AltConf
9	A	166	Total	O	0	0
			166	166		
9	B	241	Total	O	0	0
			241	241		

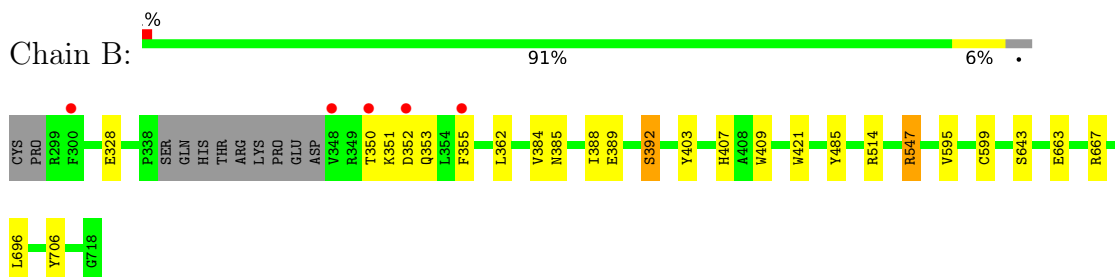
3 Residue-property plots [i](#)

These plots are drawn for all protein, RNA and DNA chains in the entry. The first graphic for a chain summarises the proportions of the various outlier classes displayed in the second graphic. The second graphic shows the sequence view annotated by issues in geometry and electron density. Residues are color-coded according to the number of geometric quality criteria for which they contain at least one outlier: green = 0, yellow = 1, orange = 2 and red = 3 or more. A red dot above a residue indicates a poor fit to the electron density ($RSRZ > 2$). Stretches of 2 or more consecutive residues without any outlier are shown as a green connector. Residues present in the sample, but not in the model, are shown in grey.

- Molecule 1: Nitric oxide synthase, brain



- Molecule 1: Nitric oxide synthase, brain



4 Data and refinement statistics

Property	Value	Source
Space group	P 21 21 21	Depositor
Cell constants a, b, c, α , β , γ	51.71Å 111.06Å 164.50Å 90.00° 90.00° 90.00°	Depositor
Resolution (Å)	52.61 – 1.85 52.61 – 1.85	Depositor EDS
% Data completeness (in resolution range)	99.8 (52.61-1.85) 99.9 (52.61-1.85)	Depositor EDS
R_{merge}	0.10	Depositor
R_{sym}	0.10	Depositor
$\langle I/\sigma(I) \rangle$ ¹	1.21 (at 1.86Å)	Xtrriage
Refinement program	PHENIX 1.9_1692	Depositor
R, R_{free}	0.199 , 0.240 0.197 , 0.235	Depositor DCC
R_{free} test set	4039 reflections (4.95%)	wwPDB-VP
Wilson B-factor (Å ²)	30.5	Xtrriage
Anisotropy	0.713	Xtrriage
Bulk solvent k_{sol} (e/Å ³), B_{sol} (Å ²)	0.37 , 53.7	EDS
L-test for twinning ²	$\langle L \rangle = 0.48$, $\langle L^2 \rangle = 0.32$	Xtrriage
Estimated twinning fraction	No twinning to report.	Xtrriage
F_o, F_c correlation	0.97	EDS
Total number of atoms	7307	wwPDB-VP
Average B, all atoms (Å ²)	51.0	wwPDB-VP

Xtrriage's analysis on translational NCS is as follows: *The largest off-origin peak in the Patterson function is 5.14% of the height of the origin peak. No significant pseudotranslation is detected.*

¹Intensities estimated from amplitudes.

²Theoretical values of $\langle |L| \rangle$, $\langle L^2 \rangle$ for acentric reflections are 0.5, 0.333 respectively for untwinned datasets, and 0.375, 0.2 for perfectly twinned datasets.

5 Model quality [i](#)

5.1 Standard geometry [i](#)

Bond lengths and bond angles in the following residue types are not validated in this section: ZN, H4B, CL, BY7, MTL, ACT, HEM

The Z score for a bond length (or angle) is the number of standard deviations the observed value is removed from the expected value. A bond length (or angle) with $|Z| > 5$ is considered an outlier worth inspection. RMSZ is the root-mean-square of all Z scores of the bond lengths (or angles).

Mol	Chain	Bond lengths		Bond angles	
		RMSZ	# Z >5	RMSZ	# Z >5
1	A	0.40	0/3447	0.55	1/4676 (0.0%)
1	B	0.40	0/3459	0.49	0/4689
All	All	0.40	0/6906	0.52	1/9365 (0.0%)

There are no bond length outliers.

All (1) bond angle outliers are listed below:

Mol	Chain	Res	Type	Atoms	Z	Observed(°)	Ideal(°)
1	A	370	LYS	CA-CB-CG	5.07	124.55	113.40

There are no chirality outliers.

There are no planarity outliers.

5.2 Too-close contacts [i](#)

In the following table, the Non-H and H(model) columns list the number of non-hydrogen atoms and hydrogen atoms in the chain respectively. The H(added) column lists the number of hydrogen atoms added and optimized by MolProbity. The Clashes column lists the number of clashes within the asymmetric unit, whereas Symm-Clashes lists symmetry related clashes.

Mol	Chain	Non-H	H(model)	H(added)	Clashes	Symm-Clashes
1	A	3348	0	3258	45	0
1	B	3357	0	3275	22	0
2	A	43	0	30	3	0
2	B	43	0	30	2	0
3	A	17	0	15	0	0
3	B	17	0	15	0	0
4	A	26	0	0	0	0
4	B	26	0	0	0	0

Continued on next page...

Continued from previous page...

Mol	Chain	Non-H	H(model)	H(added)	Clashes	Symm-Clashes
5	A	4	0	3	0	0
5	B	4	0	3	0	0
6	A	1	0	0	0	0
6	B	1	0	0	0	0
7	A	1	0	0	0	0
8	B	12	0	14	0	0
9	A	166	0	0	2	0
9	B	241	0	0	0	0
All	All	7307	0	6643	69	0

The all-atom clashscore is defined as the number of clashes found per 1000 atoms (including hydrogen atoms). The all-atom clashscore for this structure is 5.

All (69) close contacts within the same asymmetric unit are listed below, sorted by their clash magnitude.

Atom-1	Atom-2	Interatomic distance (Å)	Clash overlap (Å)
1:A:370:LYS:HD2	1:A:370:LYS:O	1.82	0.79
1:B:663:GLU:HB3	1:B:667:ARG:HH12	1.44	0.79
2:B:801:HEM:HBB2	2:B:801:HEM:HHC	1.64	0.78
1:A:348:VAL:HG22	1:A:465:ARG:HD3	1.74	0.69
1:B:547:ARG:NH2	1:B:643:SER:HB2	2.08	0.69
1:A:516:ARG:NH1	9:A:901:HOH:O	2.26	0.68
1:A:476:ASN:HD21	1:A:522:LEU:HD23	1.58	0.67
1:A:547:ARG:NH1	1:A:644:ASP:OD1	2.27	0.67
2:A:801:HEM:HHC	2:A:801:HEM:HBB2	1.79	0.65
1:B:350:THR:H	1:B:353:GLN:HE21	1.46	0.64
1:A:476:ASN:ND2	1:A:522:LEU:HD23	2.13	0.64
2:A:801:HEM:HMC2	2:A:801:HEM:HBC2	1.79	0.63
1:A:706:TYR:OH	2:A:801:HEM:O1D	2.08	0.61
1:A:348:VAL:HG21	1:A:467:ASP:HA	1.83	0.61
1:B:663:GLU:HB3	1:B:667:ARG:NH1	2.15	0.60
1:B:706:TYR:OH	2:B:801:HEM:O1D	2.16	0.60
1:A:322:LEU:HB2	1:A:699:ARG:HB2	1.85	0.59
1:A:478:GLN:HB2	1:A:481:ARG:HG3	1.84	0.59
1:A:383:GLU:HA	1:A:386:LYS:HE2	1.85	0.58
1:A:469:LYS:HE3	1:A:470:HIS:CE1	2.41	0.56
1:A:476:ASN:OD1	1:A:501:PHE:HZ	1.89	0.56
1:A:476:ASN:OD1	1:A:501:PHE:CZ	2.59	0.55
1:A:469:LYS:HG3	1:A:470:HIS:ND1	2.22	0.54
1:B:352:ASP:OD1	1:B:353:GLN:HG2	2.09	0.52
1:B:409:TRP:CE3	1:B:421:TRP:HA	2.44	0.52

Continued on next page...

Continued from previous page...

Atom-1	Atom-2	Interatomic distance (Å)	Clash overlap (Å)
1:B:547:ARG:HH21	1:B:643:SER:HB2	1.73	0.52
1:A:664:ASN:OD1	1:A:667:ARG:NH2	2.42	0.51
1:A:480:ILE:HD13	1:A:541:VAL:HG13	1.93	0.51
1:A:469:LYS:O	1:A:469:LYS:HD2	2.14	0.48
1:A:476:ASN:HD21	1:A:522:LEU:HA	1.78	0.48
1:A:617:ASP:OD2	1:A:619:ARG:HG2	2.13	0.48
1:B:351:LYS:HD2	1:B:389:GLU:HA	1.96	0.48
1:B:328:GLU:H	1:B:328:GLU:CD	2.18	0.46
1:B:595:VAL:O	1:B:599:CYS:HB2	2.16	0.46
1:A:469:LYS:HE3	1:A:470:HIS:ND1	2.32	0.45
1:A:347:ASP:N	1:A:347:ASP:OD1	2.47	0.45
1:A:525:GLN:HG3	1:A:529:ASN:O	2.16	0.45
1:A:465:ARG:HH12	1:A:571:LEU:HD11	1.81	0.45
1:B:352:ASP:OD1	1:B:353:GLN:N	2.47	0.45
1:A:469:LYS:HG3	1:A:470:HIS:CE1	2.52	0.45
1:B:355:PHE:CE1	1:B:385:ASN:HB2	2.52	0.45
1:A:475:TRP:CZ2	1:A:531:PRO:HG3	2.53	0.44
1:A:450:THR:HA	1:A:455:LEU:HD22	2.00	0.44
1:A:485:TYR:CE1	1:A:514:ARG:HA	2.53	0.44
1:A:609:GLU:CD	1:A:609:GLU:H	2.20	0.44
1:A:493:LEU:HA	9:A:901:HOH:O	2.18	0.43
1:B:403:TYR:CE1	1:B:407:HIS:CE1	3.06	0.43
1:B:485:TYR:CE1	1:B:514:ARG:HA	2.54	0.43
1:A:409:TRP:CE3	1:A:421:TRP:HA	2.53	0.43
1:A:512:ALA:HA	1:A:513:PRO:HD3	1.91	0.43
1:A:469:LYS:C	1:A:469:LYS:HD2	2.39	0.42
1:B:350:THR:H	1:B:353:GLN:NE2	2.14	0.42
1:B:353:GLN:HG2	1:B:353:GLN:H	1.55	0.42
1:A:464:GLN:HB3	1:A:579:PHE:CE2	2.54	0.42
1:A:348:VAL:HG21	1:A:467:ASP:CA	2.49	0.42
1:B:388:ILE:O	1:B:392:SER:N	2.47	0.42
1:A:330:ILE:HD11	1:B:696:LEU:HB3	2.01	0.42
1:A:470:HIS:HB3	1:A:527:ASN:OD1	2.20	0.42
1:B:351:LYS:HB2	1:B:351:LYS:HE3	1.83	0.42
1:A:686:SER:HA	1:A:691:PHE:CG	2.55	0.41
1:A:593:ILE:HA	1:A:597:ASP:HB2	2.02	0.41
1:B:485:TYR:CZ	1:B:514:ARG:HA	2.55	0.41
1:A:475:TRP:HB2	1:A:523:LEU:HB3	2.02	0.41
1:B:362:LEU:HD11	1:B:384:VAL:HG21	2.03	0.41
1:A:386:LYS:HB2	1:A:386:LYS:HE3	1.86	0.40
1:A:511:LYS:HE2	1:A:511:LYS:HB2	1.90	0.40

Continued on next page...

Continued from previous page...

Atom-1	Atom-2	Interatomic distance (Å)	Clash overlap (Å)
1:A:486:LYS:HB2	1:A:486:LYS:HE3	1.53	0.40
1:A:414:ARG:HD3	1:A:678:TRP:CD2	2.56	0.40
1:A:403:TYR:CE1	1:A:407:HIS:CE1	3.10	0.40

There are no symmetry-related clashes.

5.3 Torsion angles [i](#)

5.3.1 Protein backbone [i](#)

In the following table, the Percentiles column shows the percent Ramachandran outliers of the chain as a percentile score with respect to all X-ray entries followed by that with respect to entries of similar resolution.

The Analysed column shows the number of residues for which the backbone conformation was analysed, and the total number of residues.

Mol	Chain	Analysed	Favoured	Allowed	Outliers	Percentiles	
1	A	408/422 (97%)	392 (96%)	15 (4%)	1 (0%)	49	34
1	B	410/422 (97%)	402 (98%)	8 (2%)	0	100	100
All	All	818/844 (97%)	794 (97%)	23 (3%)	1 (0%)	53	37

All (1) Ramachandran outliers are listed below:

Mol	Chain	Res	Type
1	A	486	LYS

5.3.2 Protein sidechains [i](#)

In the following table, the Percentiles column shows the percent sidechain outliers of the chain as a percentile score with respect to all X-ray entries followed by that with respect to entries of similar resolution.

The Analysed column shows the number of residues for which the sidechain conformation was analysed, and the total number of residues.

Mol	Chain	Analysed	Rotameric	Outliers	Percentiles	
1	A	368/377 (98%)	366 (100%)	2 (0%)	90	87
1	B	369/377 (98%)	367 (100%)	2 (0%)	90	87

Continued on next page...

Continued from previous page...

Mol	Chain	Analysed	Rotameric	Outliers	Percentiles	
All	All	737/754 (98%)	733 (100%)	4 (0%)	90	87

All (4) residues with a non-rotameric sidechain are listed below:

Mol	Chain	Res	Type
1	A	476	ASN
1	A	713	THR
1	B	392	SER
1	B	547	ARG

Some sidechains can be flipped to improve hydrogen bonding and reduce clashes. All (2) such sidechains are listed below:

Mol	Chain	Res	Type
1	A	476	ASN
1	B	353	GLN

5.3.3 RNA [i](#)

There are no RNA molecules in this entry.

5.4 Non-standard residues in protein, DNA, RNA chains [i](#)

There are no non-standard protein/DNA/RNA residues in this entry.

5.5 Carbohydrates [i](#)

There are no carbohydrates in this entry.

5.6 Ligand geometry [i](#)

Of 12 ligands modelled in this entry, 3 are monoatomic - leaving 9 for Mogul analysis.

In the following table, the Counts columns list the number of bonds (or angles) for which Mogul statistics could be retrieved, the number of bonds (or angles) that are observed in the model and the number of bonds (or angles) that are defined in the Chemical Component Dictionary. The Link column lists molecule types, if any, to which the group is linked. The Z score for a bond length (or angle) is the number of standard deviations the observed value is removed from the expected value. A bond length (or angle) with $|Z| > 2$ is considered an outlier worth inspection. RMSZ is the root-mean-square of all Z scores of the bond lengths (or angles).

Mol	Type	Chain	Res	Link	Bond lengths			Bond angles		
					Counts	RMSZ	# Z > 2	Counts	RMSZ	# Z > 2
2	HEM	A	801	1	27,50,50	2.09	6 (22%)	17,82,82	2.07	6 (35%)
3	H4B	A	802	-	15,18,18	0.77	0	11,26,26	2.46	5 (45%)
4	BY7	A	803	-	27,27,27	0.49	0	38,38,38	1.36	4 (10%)
5	ACT	A	804	-	1,3,3	1.65	0	0,3,3	0.00	-
2	HEM	B	801	1	27,50,50	2.21	7 (25%)	17,82,82	1.57	3 (17%)
3	H4B	B	802	-	15,18,18	0.86	0	11,26,26	2.45	4 (36%)
4	BY7	B	803	-	27,27,27	0.44	0	38,38,38	1.42	4 (10%)
5	ACT	B	804	-	1,3,3	1.65	0	0,3,3	0.00	-
8	MTL	B	805	-	11,11,11	0.36	0	14,14,14	0.50	0

In the following table, the Chirals column lists the number of chiral outliers, the number of chiral centers analysed, the number of these observed in the model and the number defined in the Chemical Component Dictionary. Similar counts are reported in the Torsion and Rings columns. '-' means no outliers of that kind were identified.

Mol	Type	Chain	Res	Link	Chirals	Torsions	Rings
2	HEM	A	801	1	-	0/6/54/54	0/0/8/8
3	H4B	A	802	-	-	0/8/17/17	0/2/2/2
4	BY7	A	803	-	-	0/17/17/17	0/2/2/2
5	ACT	A	804	-	-	0/0/0/0	0/0/0/0
2	HEM	B	801	1	-	0/6/54/54	0/0/8/8
3	H4B	B	802	-	-	0/8/17/17	0/2/2/2
4	BY7	B	803	-	-	0/17/17/17	0/2/2/2
5	ACT	B	804	-	-	0/0/0/0	0/0/0/0
8	MTL	B	805	-	-	0/16/16/16	0/0/0/0

All (13) bond length outliers are listed below:

Mol	Chain	Res	Type	Atoms	Z	Observed(Å)	Ideal(Å)
2	A	801	HEM	C3B-C2B	-4.67	1.33	1.40
2	B	801	HEM	C3B-C2B	-4.55	1.34	1.40
2	B	801	HEM	C3C-C2C	-3.59	1.35	1.40
2	A	801	HEM	C3C-C2C	-3.23	1.35	1.40
2	B	801	HEM	CAA-C2A	2.01	1.55	1.52
2	B	801	HEM	CMA-C3A	2.06	1.55	1.51
2	A	801	HEM	C1D-ND	2.65	1.41	1.36
2	A	801	HEM	C3C-CAC	3.29	1.54	1.47
2	B	801	HEM	C3C-CAC	3.73	1.55	1.47
2	A	801	HEM	C3B-CAB	3.85	1.55	1.47
2	B	801	HEM	C3B-CAB	3.99	1.55	1.47
2	A	801	HEM	C3D-C2D	5.25	1.53	1.37

Continued on next page...

Continued from previous page...

Mol	Chain	Res	Type	Atoms	Z	Observed(Å)	Ideal(Å)
2	B	801	HEM	C3D-C2D	5.36	1.53	1.37

All (26) bond angle outliers are listed below:

Mol	Chain	Res	Type	Atoms	Z	Observed(°)	Ideal(°)
2	A	801	HEM	CBD-CAD-C3D	-5.31	102.33	112.47
2	B	801	HEM	CBD-CAD-C3D	-3.60	105.60	112.47
4	B	803	BY7	C09-C08-C06	-3.24	105.95	112.71
3	A	802	H4B	N3-C2-N1	-3.19	120.35	125.43
4	A	803	BY7	C09-C08-C06	-3.19	106.05	112.71
2	A	801	HEM	C1D-C2D-C3D	-3.11	104.83	107.00
4	A	803	BY7	C05-C06-N01	-3.01	119.74	122.91
4	B	803	BY7	C05-C06-N01	-2.98	119.77	122.91
3	B	802	H4B	N3-C2-N1	-2.95	120.74	125.43
2	A	801	HEM	CBA-CAA-C2A	-2.59	107.54	112.48
2	B	801	HEM	C1D-C2D-C3D	-2.45	105.29	107.00
2	A	801	HEM	C3C-C4C-NC	-2.16	106.87	110.94
2	A	801	HEM	C4C-C3C-C2C	2.20	108.44	106.90
4	B	803	BY7	C08-C06-N01	2.34	119.26	115.82
3	B	802	H4B	C2-N1-C8A	2.39	119.86	114.50
3	A	802	H4B	N2-C2-N3	2.40	121.01	117.25
4	A	803	BY7	C08-C06-N01	2.48	119.46	115.82
3	A	802	H4B	C2-N1-C8A	2.80	120.78	114.50
2	B	801	HEM	CMC-C2C-C3C	2.84	130.06	124.88
2	A	801	HEM	CMC-C2C-C3C	2.98	130.31	124.88
3	A	802	H4B	C4-N3-C2	3.45	121.03	116.06
3	B	802	H4B	C4-N3-C2	3.55	121.16	116.06
4	A	803	BY7	C02-N01-C06	4.95	121.64	118.17
3	A	802	H4B	C4-C4A-C8A	5.08	119.16	114.56
4	B	803	BY7	C02-N01-C06	5.10	121.75	118.17
3	B	802	H4B	C4-C4A-C8A	5.35	119.40	114.56

There are no chirality outliers.

There are no torsion outliers.

There are no ring outliers.

2 monomers are involved in 5 short contacts:

Mol	Chain	Res	Type	Clashes	Symm-Clashes
2	A	801	HEM	3	0
2	B	801	HEM	2	0

5.7 Other polymers [i](#)

There are no such residues in this entry.

5.8 Polymer linkage issues [i](#)

There are no chain breaks in this entry.

6 Fit of model and data

6.1 Protein, DNA and RNA chains

In the following table, the column labelled ‘#RSRZ > 2’ contains the number (and percentage) of RSRZ outliers, followed by percent RSRZ outliers for the chain as percentile scores relative to all X-ray entries and entries of similar resolution. The OWAB column contains the minimum, median, 95th percentile and maximum values of the occupancy-weighted average B-factor per residue. The column labelled ‘Q < 0.9’ lists the number of (and percentage) of residues with an average occupancy less than 0.9.

Mol	Chain	Analysed	<RSRZ>	#RSRZ>2	OWAB(Å ²)	Q<0.9
1	A	410/422 (97%)	0.25	17 (4%) 37 36	24, 53, 98, 140	0
1	B	411/422 (97%)	0.02	5 (1%) 79 79	26, 42, 73, 108	0
All	All	821/844 (97%)	0.14	22 (2%) 54 53	24, 47, 92, 140	0

All (22) RSRZ outliers are listed below:

Mol	Chain	Res	Type	RSRZ
1	A	348	VAL	7.4
1	A	322	LEU	4.3
1	A	355	PHE	3.9
1	A	551	PHE	3.7
1	A	300	PHE	3.6
1	A	486	LYS	3.6
1	B	300	PHE	3.5
1	A	716	TRP	3.5
1	A	347	ASP	3.0
1	A	352	ASP	2.9
1	A	715	VAL	2.7
1	A	469	LYS	2.5
1	A	370	LYS	2.4
1	A	470	HIS	2.4
1	A	511	LYS	2.4
1	A	351	LYS	2.4
1	B	352	ASP	2.3
1	A	552	ASP	2.3
1	B	355	PHE	2.2
1	B	348	VAL	2.2
1	B	350	THR	2.2
1	A	554	PHE	2.2

6.2 Non-standard residues in protein, DNA, RNA chains [i](#)

There are no non-standard protein/DNA/RNA residues in this entry.

6.3 Carbohydrates [i](#)

There are no carbohydrates in this entry.

6.4 Ligands [i](#)

In the following table, the Atoms column lists the number of modelled atoms in the group and the number defined in the chemical component dictionary. The B-factors column lists the minimum, median, 95th percentile and maximum values of B factors of atoms in the group. The column labelled 'Q< 0.9' lists the number of atoms with occupancy less than 0.9.

Mol	Type	Chain	Res	Atoms	RSCC	RSR	B-factors(Å ²)	Q<0.9
8	MTL	B	805	12/12	0.80	0.19	54,75,84,86	0
4	BY7	B	803	26/26	0.90	0.17	28,62,78,81	0
3	H4B	B	802	17/17	0.90	0.11	35,40,47,53	0
3	H4B	A	802	17/17	0.90	0.13	34,47,57,57	0
4	BY7	A	803	26/26	0.92	0.18	29,88,99,99	0
6	CL	B	806	1/1	0.93	0.10	57,57,57,57	0
5	ACT	B	804	4/4	0.93	0.13	51,57,59,62	0
6	CL	A	805	1/1	0.96	0.05	53,53,53,53	0
5	ACT	A	804	4/4	0.96	0.19	57,59,64,68	0
2	HEM	A	801	43/43	0.97	0.11	23,35,56,80	0
2	HEM	B	801	43/43	0.98	0.12	25,35,65,82	0
7	ZN	A	806	1/1	0.99	0.08	36,36,36,36	0

6.5 Other polymers [i](#)

There are no such residues in this entry.