



# Full wwPDB X-ray Structure Validation Report ⓘ

Jun 22, 2024 – 03:41 PM EDT

PDB ID : 5DDS  
Title : Crystal structure of aminotransferase CrmG from Actinoalloteichus sp. WH1-2216-6 in complex with PLP  
Authors : Xu, J.; Feng, Z.; Liu, J.  
Deposited on : 2015-08-25  
Resolution : 2.60 Å(reported)

This is a Full wwPDB X-ray Structure Validation Report for a publicly released PDB entry.

We welcome your comments at [validation@mail.wwpdb.org](mailto:validation@mail.wwpdb.org)

A user guide is available at

<https://www.wwpdb.org/validation/2017/XrayValidationReportHelp>

with specific help available everywhere you see the ⓘ symbol.

The types of validation reports are described at

<http://www.wwpdb.org/validation/2017/FAQs#types>.

---

The following versions of software and data (see [references ⓘ](#)) were used in the production of this report:

MolProbity : 4.02b-467  
Mogul : 1.8.5 (274361), CSD as541be (2020)  
Xtriage (Phenix) : 1.13  
EDS : 2.37.1  
Percentile statistics : 20191225.v01 (using entries in the PDB archive December 25th 2019)  
Refmac : 5.8.0158  
CCP4 : 7.0.044 (Gargrove)  
Ideal geometry (proteins) : Engh & Huber (2001)  
Ideal geometry (DNA, RNA) : Parkinson et al. (1996)  
Validation Pipeline (wwPDB-VP) : 2.37.1

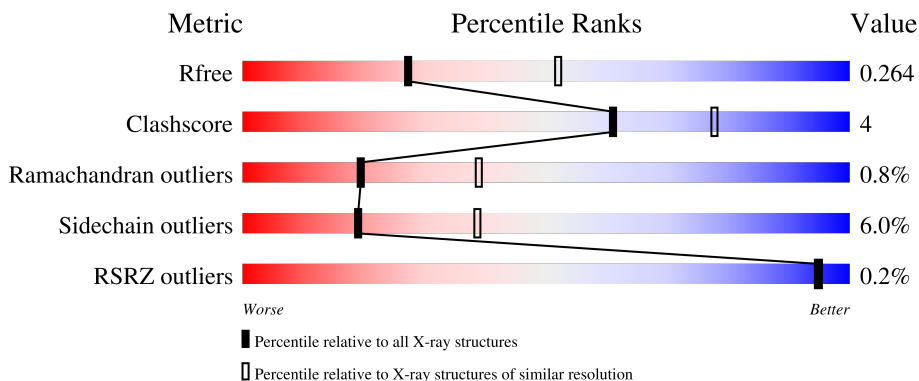
# 1 Overall quality at a glance

The following experimental techniques were used to determine the structure:

*X-RAY DIFFRACTION*

The reported resolution of this entry is 2.60 Å.

Percentile scores (ranging between 0-100) for global validation metrics of the entry are shown in the following graphic. The table shows the number of entries on which the scores are based.



Metric	Whole archive (#Entries)	Similar resolution (#Entries, resolution range(Å))
$R_{free}$	130704	3163 (2.60-2.60)
Clashscore	141614	3518 (2.60-2.60)
Ramachandran outliers	138981	3455 (2.60-2.60)
Sidechain outliers	138945	3455 (2.60-2.60)
RSRZ outliers	127900	3104 (2.60-2.60)

The table below summarises the geometric issues observed across the polymeric chains and their fit to the electron density. The red, orange, yellow and green segments of the lower bar indicate the fraction of residues that contain outliers for  $\geq 3$ , 2, 1 and 0 types of geometric quality criteria respectively. A grey segment represents the fraction of residues that are not modelled. The numeric value for each fraction is indicated below the corresponding segment, with a dot representing fractions  $\leq 5\%$ . The upper red bar (where present) indicates the fraction of residues that have poor fit to the electron density. The numeric value is given above the bar.

Mol	Chain	Length	Quality of chain
1	A	523	 81% 15% ..
1	B	523	 83% 14% ..
1	C	523	 82% 14% ..
1	D	523	 84% 13% ..

## 2 Entry composition [i](#)

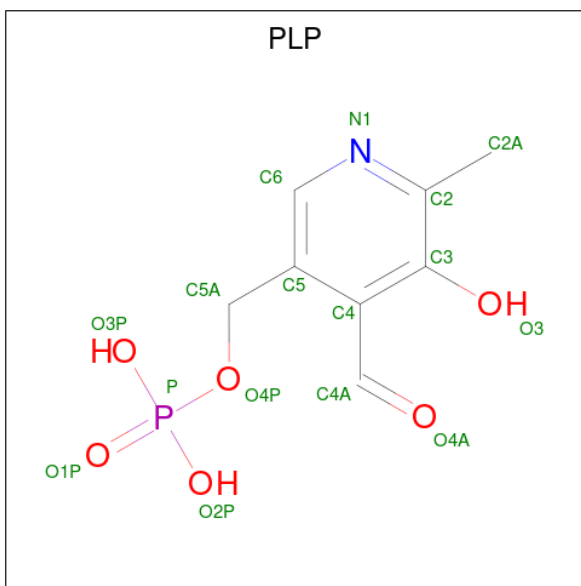
There are 5 unique types of molecules in this entry. The entry contains 16012 atoms, of which 0 are hydrogens and 0 are deuteriums.

In the tables below, the ZeroOcc column contains the number of atoms modelled with zero occupancy, the AltConf column contains the number of residues with at least one atom in alternate conformation and the Trace column contains the number of residues modelled with at most 2 atoms.

- Molecule 1 is a protein called CrmG.

Mol	Chain	Residues	Atoms					ZeroOcc	AltConf	Trace
			Total	C	N	O	S			
1	A	514	Total 3966	C 2480	N 718	O 757	S 11	0	0	0
1	B	511	Total 3954	C 2474	N 715	O 754	S 11	0	0	0
1	C	510	Total 3946	C 2470	N 714	O 751	S 11	0	0	0
1	D	512	Total 3958	C 2476	N 716	O 755	S 11	0	0	0

- Molecule 2 is PYRIDOXAL-5'-PHOSPHATE (three-letter code: PLP) (formula: C<sub>8</sub>H<sub>10</sub>NO<sub>6</sub>P).



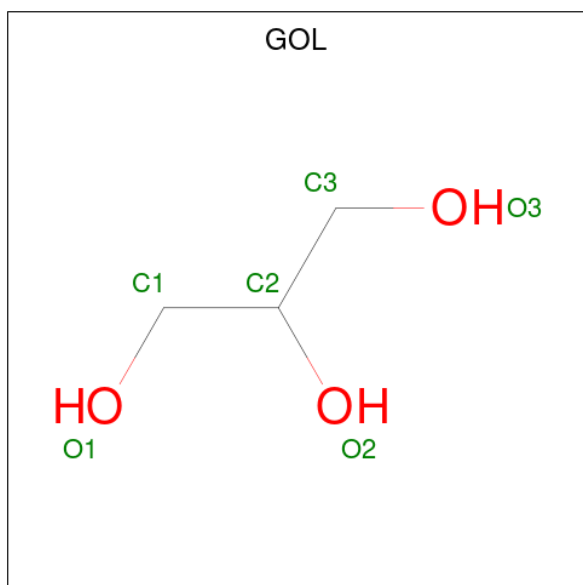
Mol	Chain	Residues	Atoms					ZeroOcc	AltConf
			Total	C	N	O	P		
2	A	1	Total 15	C 8	N 1	O 5	P 1	0	0
2	B	1	Total 15	C 8	N 1	O 5	P 1	0	0

*Continued on next page...*

Continued from previous page...

Mol	Chain	Residues	Atoms					ZeroOcc	AltConf
2	C	1	Total	C	N	O	P	0	0
			15	8	1	5	1		
2	D	1	Total	C	N	O	P	0	0
			15	8	1	5	1		

- Molecule 3 is GLYCEROL (three-letter code: GOL) (formula: C<sub>3</sub>H<sub>8</sub>O<sub>3</sub>).



Mol	Chain	Residues	Atoms			ZeroOcc	AltConf
3	A	1	Total	C	O	0	0
			6	3	3		
3	B	1	Total	C	O	0	0
			6	3	3		

- Molecule 4 is ACETIC ACID (three-letter code: ACY) (formula: C<sub>2</sub>H<sub>4</sub>O<sub>2</sub>).



Mol	Chain	Residues	Atoms	ZeroOcc	AltConf
4	D	1	Total C O 4 2 2	0	0

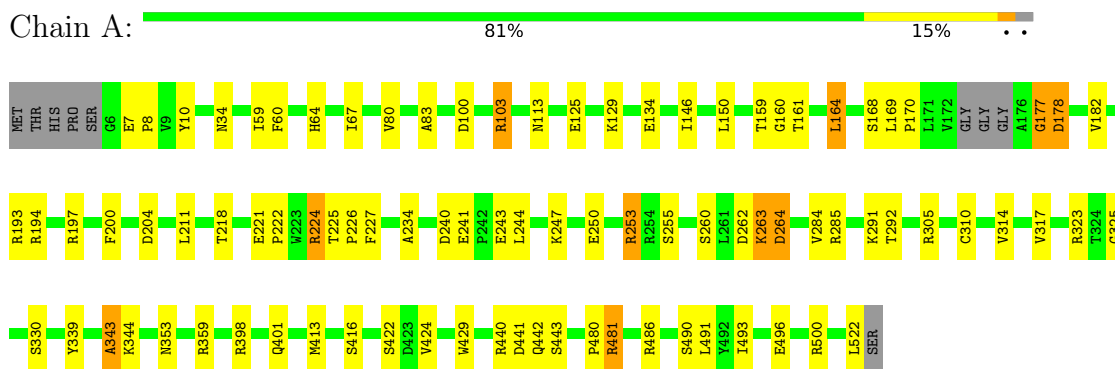
- Molecule 5 is water.

Mol	Chain	Residues	Atoms	ZeroOcc	AltConf
5	A	33	Total O 33 33	0	0
5	B	32	Total O 32 32	0	0
5	C	20	Total O 20 20	0	0
5	D	27	Total O 27 27	0	0

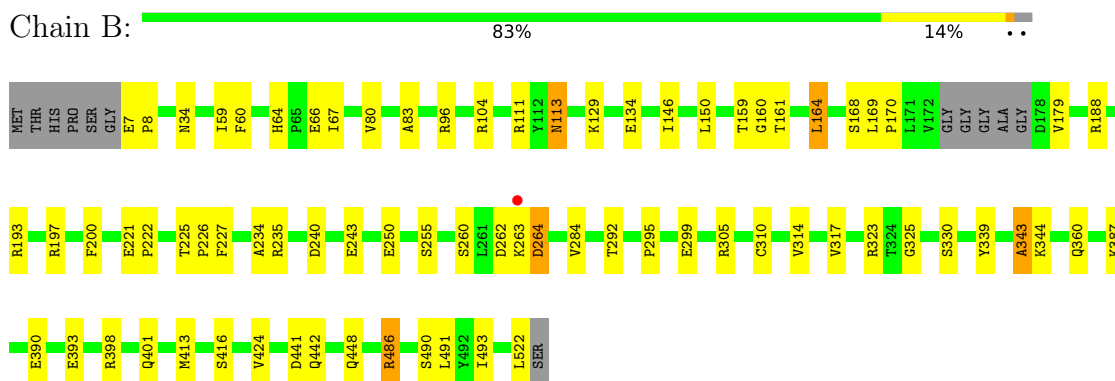
### 3 Residue-property plots [i](#)

These plots are drawn for all protein, RNA, DNA and oligosaccharide chains in the entry. The first graphic for a chain summarises the proportions of the various outlier classes displayed in the second graphic. The second graphic shows the sequence view annotated by issues in geometry and electron density. Residues are color-coded according to the number of geometric quality criteria for which they contain at least one outlier: green = 0, yellow = 1, orange = 2 and red = 3 or more. A red dot above a residue indicates a poor fit to the electron density ( $RSRZ > 2$ ). Stretches of 2 or more consecutive residues without any outlier are shown as a green connector. Residues present in the sample, but not in the model, are shown in grey.

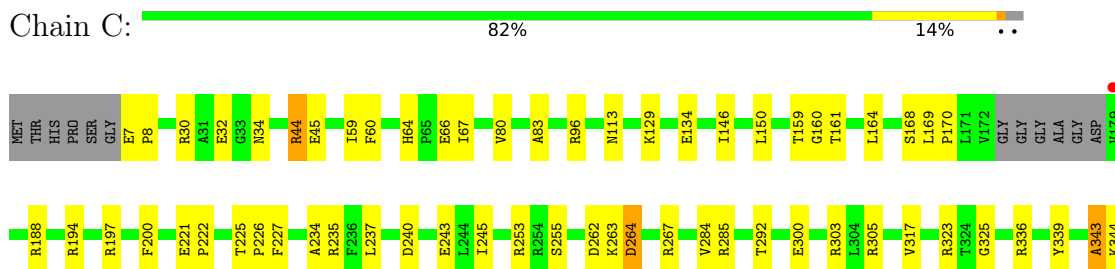
- Molecule 1: CrmG

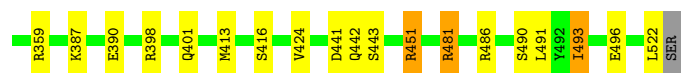


- Molecule 1: CrmG

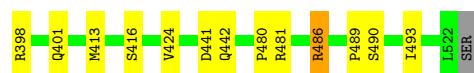
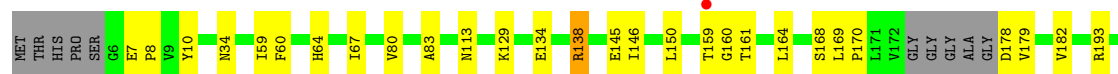
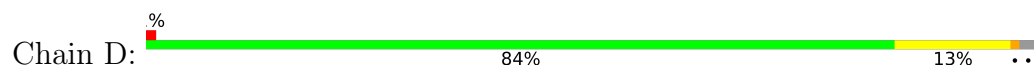


- Molecule 1: CrmG





- Molecule 1: CrmG



## 4 Data and refinement statistics i

Property	Value	Source
Space group	P 1	Depositor
Cell constants a, b, c, $\alpha$ , $\beta$ , $\gamma$	84.08Å 84.21Å 88.95Å 106.71° 109.16° 95.03°	Depositor
Resolution (Å)	62.02 – 2.60 62.02 – 2.60	Depositor EDS
% Data completeness (in resolution range)	92.8 (62.02-2.60) 92.8 (62.02-2.60)	Depositor EDS
$R_{merge}$	0.14	Depositor
$R_{sym}$	(Not available)	Depositor
$\langle I/\sigma(I) \rangle$ <sup>1</sup>	2.31 (at 2.61Å)	Xtrriage
Refinement program	REFMAC 5.8.0103	Depositor
R, $R_{free}$	0.215 , 0.262 0.218 , 0.264	Depositor DCC
$R_{free}$ test set	3146 reflections (5.10%)	wwPDB-VP
Wilson B-factor (Å <sup>2</sup> )	32.4	Xtrriage
Anisotropy	0.219	Xtrriage
Bulk solvent $k_{sol}$ (e/Å <sup>3</sup> ), $B_{sol}$ (Å <sup>2</sup> )	0.36 , 14.2	EDS
L-test for twinning <sup>2</sup>	$\langle  L  \rangle = 0.49$ , $\langle L^2 \rangle = 0.32$	Xtrriage
Estimated twinning fraction	0.136 for -k,-h,-l	Xtrriage
Reported twinning fraction	0.925 for H, K, L 0.075 for -K, -H, -L	Depositor
Outliers	0 of 61690 reflections	Xtrriage
$F_o, F_c$ correlation	0.91	EDS
Total number of atoms	16012	wwPDB-VP
Average B, all atoms (Å <sup>2</sup> )	34.0	wwPDB-VP

Xtrriage's analysis on translational NCS is as follows: *The largest off-origin peak in the Patterson function is 15.54% of the height of the origin peak. No significant pseudotranslation is detected.*

<sup>1</sup>Intensities estimated from amplitudes.

<sup>2</sup>Theoretical values of  $\langle |L| \rangle$ ,  $\langle L^2 \rangle$  for acentric reflections are 0.5, 0.333 respectively for untwinned datasets, and 0.375, 0.2 for perfectly twinned datasets.



## 5 Model quality [i](#)

### 5.1 Standard geometry [i](#)

Bond lengths and bond angles in the following residue types are not validated in this section: GOL, PLP, ACY

The Z score for a bond length (or angle) is the number of standard deviations the observed value is removed from the expected value. A bond length (or angle) with  $|Z| > 5$  is considered an outlier worth inspection. RMSZ is the root-mean-square of all Z scores of the bond lengths (or angles).

Mol	Chain	Bond lengths		Bond angles	
		RMSZ	# Z  >5	RMSZ	# Z  >5
1	A	0.77	0/4033	0.42	0/5463
1	B	0.76	0/4021	0.41	0/5448
1	C	0.76	0/4013	0.41	0/5437
1	D	0.75	0/4025	0.40	0/5453
All	All	0.76	0/16092	0.41	0/21801

Chiral center outliers are detected by calculating the chiral volume of a chiral center and verifying if the center is modelled as a planar moiety or with the opposite hand. A planarity outlier is detected by checking planarity of atoms in a peptide group, atoms in a mainchain group or atoms of a sidechain that are expected to be planar.

Mol	Chain	#Chirality outliers	#Planarity outliers
1	A	0	2
1	B	0	2
1	C	0	1
1	D	0	2
All	All	0	7

There are no bond length outliers.

There are no bond angle outliers.

There are no chirality outliers.

All (7) planarity outliers are listed below:

Mol	Chain	Res	Type	Group
1	A	160	GLY	Peptide
1	A	325	GLY	Peptide
1	B	160	GLY	Peptide
1	B	325	GLY	Peptide
1	C	325	GLY	Peptide

*Continued on next page...*

Continued from previous page...

Mol	Chain	Res	Type	Group
1	D	160	GLY	Peptide
1	D	325	GLY	Peptide

## 5.2 Too-close contacts [i](#)

In the following table, the Non-H and H(model) columns list the number of non-hydrogen atoms and hydrogen atoms in the chain respectively. The H(added) column lists the number of hydrogen atoms added and optimized by MolProbity. The Clashes column lists the number of clashes within the asymmetric unit, whereas Symm-Clashes lists symmetry-related clashes.

Mol	Chain	Non-H	H(model)	H(added)	Clashes	Symm-Clashes
1	A	3966	0	3938	48	0
1	B	3954	0	3931	32	0
1	C	3946	0	3927	38	0
1	D	3958	0	3934	32	0
2	A	15	0	7	0	0
2	B	15	0	7	0	0
2	C	15	0	7	0	0
2	D	15	0	7	0	0
3	A	6	0	8	0	0
3	B	6	0	8	0	0
4	D	4	0	3	0	0
5	A	33	0	0	3	0
5	B	32	0	0	1	0
5	C	20	0	0	0	0
5	D	27	0	0	2	0
All	All	16012	0	15777	142	0

The all-atom clashscore is defined as the number of clashes found per 1000 atoms (including hydrogen atoms). The all-atom clashscore for this structure is 4.

All (142) close contacts within the same asymmetric unit are listed below, sorted by their clash magnitude.

Atom-1	Atom-2	Interatomic distance (Å)	Clash overlap (Å)
1:C:481:ARG:HH11	1:C:481:ARG:HG3	1.30	0.97
1:A:218:THR:O	1:A:224:ARG:NH2	2.03	0.91
1:A:224:ARG:HG3	1:A:224:ARG:HH21	1.41	0.82
1:A:177:GLY:O	1:A:178:ASP:HB3	1.80	0.82
1:A:178:ASP:O	1:A:182:VAL:HG23	1.83	0.79
1:D:178:ASP:O	1:D:182:VAL:HG23	1.85	0.76

Continued on next page...

*Continued from previous page...*

Atom-1	Atom-2	Interatomic distance (Å)	Clash overlap (Å)
1:C:481:ARG:HH11	1:C:481:ARG:CG	2.00	0.74
1:A:224:ARG:HH21	1:A:224:ARG:CG	2.03	0.71
1:B:486:ARG:HG2	5:B:714:HOH:O	1.91	0.69
1:C:300:GLU:OE2	1:C:303:ARG:NH1	2.25	0.68
1:D:169:LEU:N	1:D:170:PRO:HD2	2.09	0.68
1:B:169:LEU:N	1:B:170:PRO:HD2	2.10	0.67
1:C:169:LEU:N	1:C:170:PRO:HD2	2.09	0.66
1:A:169:LEU:N	1:A:170:PRO:HD2	2.09	0.66
1:D:323:ARG:NH1	1:D:489:PRO:O	2.29	0.66
1:A:250:GLU:OE2	1:A:253:ARG:HD3	1.95	0.65
1:A:204:ASP:O	1:A:204:ASP:OD1	2.15	0.65
1:D:169:LEU:N	1:D:170:PRO:CD	2.63	0.62
1:A:169:LEU:N	1:A:170:PRO:CD	2.63	0.62
1:B:134:GLU:OE1	1:B:339:TYR:OH	2.18	0.62
1:A:134:GLU:OE1	1:A:339:TYR:OH	2.17	0.61
1:B:169:LEU:N	1:B:170:PRO:CD	2.63	0.61
1:A:353:ASN:ND2	5:A:701:HOH:O	2.32	0.61
1:B:225:THR:N	1:B:226:PRO:CD	2.64	0.61
1:D:134:GLU:OE1	1:D:339:TYR:OH	2.16	0.61
1:C:305:ARG:NH1	1:C:336:ARG:O	2.32	0.61
1:C:225:THR:N	1:C:226:PRO:CD	2.64	0.61
1:D:225:THR:N	1:D:226:PRO:CD	2.64	0.61
1:C:169:LEU:N	1:C:170:PRO:CD	2.63	0.60
1:A:177:GLY:O	1:A:178:ASP:CB	2.49	0.60
1:A:225:THR:N	1:A:226:PRO:CD	2.64	0.60
1:C:64:HIS:HB3	1:C:67:ILE:HD12	1.84	0.60
1:D:295:PRO:O	1:D:299:GLU:HG2	2.02	0.59
1:A:64:HIS:HB3	1:A:67:ILE:HD12	1.85	0.59
1:A:422:SER:O	1:A:440:ARG:NH1	2.36	0.58
1:B:64:HIS:HB3	1:B:67:ILE:HD12	1.85	0.58
1:B:104:ARG:NH1	1:B:393:GLU:OE1	2.34	0.58
1:C:481:ARG:HG3	1:C:481:ARG:NH1	2.07	0.58
1:B:295:PRO:O	1:B:299:GLU:HG2	2.04	0.57
1:D:64:HIS:HB3	1:D:67:ILE:HD12	1.84	0.57
1:B:317:VAL:HG13	1:B:343:ALA:HB3	1.87	0.57
1:D:317:VAL:HG13	1:D:343:ALA:HB3	1.87	0.57
1:C:134:GLU:OE1	1:C:339:TYR:OH	2.15	0.56
1:A:224:ARG:NH2	1:A:224:ARG:CG	2.67	0.56
1:A:317:VAL:HG13	1:A:343:ALA:HB3	1.87	0.55
1:C:317:VAL:HG13	1:C:343:ALA:HB3	1.87	0.55
1:A:443:SER:HB3	1:C:481:ARG:NH2	2.23	0.53

*Continued on next page...*

*Continued from previous page...*

Atom-1	Atom-2	Interatomic distance (Å)	Clash overlap (Å)
1:A:250:GLU:OE2	1:A:253:ARG:CD	2.58	0.52
1:B:164:LEU:C	1:B:164:LEU:HD12	2.31	0.51
1:C:262:ASP:O	1:C:264:ASP:N	2.44	0.51
1:A:262:ASP:O	1:A:264:ASP:N	2.45	0.50
1:C:443:SER:O	1:C:451:ARG:HG3	2.12	0.50
1:B:262:ASP:O	1:B:264:ASP:N	2.45	0.50
1:B:34:ASN:ND2	1:B:490:SER:OG	2.45	0.49
1:B:159:THR:O	1:B:161:THR:N	2.45	0.49
1:D:159:THR:O	1:D:161:THR:N	2.45	0.49
1:C:34:ASN:ND2	1:C:490:SER:OG	2.45	0.49
1:C:159:THR:O	1:C:161:THR:N	2.45	0.49
1:D:262:ASP:O	1:D:264:ASP:N	2.45	0.49
1:A:34:ASN:ND2	1:A:490:SER:OG	2.45	0.49
1:D:34:ASN:ND2	1:D:490:SER:OG	2.46	0.48
1:A:200:PHE:O	1:A:234:ALA:HA	2.13	0.48
1:A:241:GLU:HB3	1:A:244:LEU:HD13	1.95	0.48
1:C:30:ARG:NH1	1:C:32:GLU:OE1	2.38	0.48
1:D:200:PHE:O	1:D:234:ALA:HA	2.14	0.48
1:A:221:GLU:N	1:A:222:PRO:HD2	2.29	0.48
1:B:221:GLU:N	1:B:222:PRO:HD2	2.29	0.48
1:C:227:PHE:CE1	1:D:129:LYS:HB3	2.49	0.48
1:C:44:ARG:HH21	1:C:44:ARG:CG	2.27	0.48
1:D:221:GLU:N	1:D:222:PRO:HD2	2.29	0.48
1:C:129:LYS:HB3	1:D:227:PHE:CE1	2.49	0.47
1:A:159:THR:O	1:A:161:THR:N	2.46	0.47
1:A:284:VAL:HG22	1:A:292:THR:HG22	1.96	0.47
1:C:200:PHE:O	1:C:234:ALA:HA	2.14	0.47
1:B:200:PHE:O	1:B:234:ALA:HA	2.14	0.47
1:D:80:VAL:HG12	1:D:83:ALA:HB2	1.97	0.47
1:C:284:VAL:HG22	1:C:292:THR:HG22	1.97	0.47
1:D:241:GLU:HB3	1:D:244:LEU:HD13	1.95	0.47
1:C:221:GLU:N	1:C:222:PRO:HD2	2.30	0.46
1:D:284:VAL:HG22	1:D:292:THR:HG22	1.96	0.46
1:C:44:ARG:NH2	1:C:45:GLU:O	2.49	0.46
1:D:80:VAL:CG1	1:D:83:ALA:HB2	2.45	0.46
1:C:168:SER:C	1:C:170:PRO:HD2	2.36	0.46
1:A:164:LEU:HD13	1:A:164:LEU:O	2.16	0.46
1:B:284:VAL:HG22	1:B:292:THR:HG22	1.96	0.46
1:A:80:VAL:HG12	1:A:83:ALA:HB2	1.98	0.46
1:A:168:SER:C	1:A:170:PRO:HD2	2.36	0.46
1:A:204:ASP:OD1	1:A:204:ASP:C	2.54	0.46

*Continued on next page...*

*Continued from previous page...*

Atom-1	Atom-2	Interatomic distance (Å)	Clash overlap (Å)
1:D:168:SER:C	1:D:170:PRO:HD2	2.36	0.46
1:B:7:GLU:HB2	1:B:8:PRO:HD2	1.98	0.45
1:A:80:VAL:CG1	1:A:83:ALA:HB2	2.47	0.45
1:D:138:ARG:HH21	1:D:138:ARG:HG3	1.80	0.45
1:C:80:VAL:CG1	1:C:83:ALA:HB2	2.47	0.45
1:C:80:VAL:HG12	1:C:83:ALA:HB2	1.98	0.45
1:A:146:ILE:O	1:A:150:LEU:HG	2.17	0.45
1:D:486:ARG:NH2	5:D:702:HOH:O	2.40	0.45
1:A:305:ARG:HG2	1:A:310:CYS:O	2.16	0.45
1:D:7:GLU:HB2	1:D:8:PRO:HD2	1.99	0.45
1:B:146:ILE:O	1:B:150:LEU:HG	2.17	0.44
1:C:146:ILE:O	1:C:150:LEU:HG	2.17	0.44
1:B:80:VAL:HG12	1:B:83:ALA:HB2	1.99	0.44
1:C:7:GLU:HB2	1:C:8:PRO:HD2	1.99	0.44
1:A:481:ARG:NH2	1:C:443:SER:HB3	2.33	0.44
1:A:129:LYS:HB3	1:B:227:PHE:CE1	2.53	0.44
1:B:80:VAL:CG1	1:B:83:ALA:HB2	2.47	0.44
1:B:168:SER:C	1:B:170:PRO:HD2	2.36	0.44
1:D:146:ILE:O	1:D:150:LEU:HG	2.17	0.44
1:A:7:GLU:HB2	1:A:8:PRO:HD2	1.99	0.43
1:A:500:ARG:NE	5:A:706:HOH:O	2.47	0.43
1:D:305:ARG:HG2	1:D:310:CYS:O	2.18	0.43
1:B:305:ARG:HG2	1:B:310:CYS:O	2.18	0.43
1:A:10:TYR:CE2	1:B:96:ARG:HG3	2.53	0.43
1:A:59:ILE:HG23	1:A:60:PHE:CD2	2.54	0.43
1:C:59:ILE:HG23	1:C:60:PHE:CD2	2.54	0.43
1:B:59:ILE:HG23	1:B:60:PHE:CD2	2.54	0.43
1:A:100:ASP:OD1	1:A:103:ARG:NH1	2.52	0.43
1:B:111:ARG:HG2	1:B:360:GLN:NE2	2.33	0.43
1:A:491:LEU:C	1:A:491:LEU:HD12	2.40	0.42
1:D:59:ILE:HG23	1:D:60:PHE:CD2	2.54	0.42
1:D:145:GLU:OE2	1:D:271:ARG:NH2	2.38	0.42
1:C:66:GLU:HG2	1:C:387:LYS:CE	2.50	0.42
1:C:96:ARG:HG3	1:D:10:TYR:CE2	2.55	0.42
1:A:314:VAL:HG11	1:A:330:SER:HB3	2.03	0.41
1:C:491:LEU:C	1:C:491:LEU:HD12	2.41	0.41
1:B:113:ASN:HD22	1:B:360:GLN:HG2	1.86	0.41
1:B:314:VAL:HG11	1:B:330:SER:HB3	2.03	0.41
1:A:125:GLU:OE1	1:A:211:LEU:HB2	2.20	0.41
1:A:291:LYS:HE2	1:A:429:TRP:CZ2	2.56	0.41
1:B:441:ASP:OD1	1:B:442:GLN:N	2.54	0.41

*Continued on next page...*

Continued from previous page...

Atom-1	Atom-2	Interatomic distance (Å)	Clash overlap (Å)
1:C:441:ASP:OD1	1:C:442:GLN:N	2.54	0.41
1:D:197:ARG:NH2	1:D:233:PRO:HG3	2.36	0.41
1:D:441:ASP:OD1	1:D:442:GLN:N	2.54	0.41
1:D:480:PRO:HD2	5:D:711:HOH:O	2.21	0.41
1:B:491:LEU:C	1:B:491:LEU:HD12	2.41	0.41
1:C:493:ILE:O	1:C:493:ILE:HG23	2.21	0.40
1:A:480:PRO:HD2	5:A:717:HOH:O	2.20	0.40
1:C:237:LEU:HD13	1:C:245:ILE:HG23	2.04	0.40
1:A:441:ASP:OD1	1:A:442:GLN:N	2.54	0.40
1:B:66:GLU:HG2	1:B:387:LYS:CE	2.51	0.40
1:C:481:ARG:HD2	1:C:481:ARG:HA	1.91	0.40
1:A:224:ARG:C	1:A:226:PRO:HD2	2.42	0.40
1:A:227:PHE:CE1	1:B:129:LYS:HB3	2.57	0.40

There are no symmetry-related clashes.

## 5.3 Torsion angles [i](#)

### 5.3.1 Protein backbone [i](#)

In the following table, the Percentiles column shows the percent Ramachandran outliers of the chain as a percentile score with respect to all X-ray entries followed by that with respect to entries of similar resolution.

The Analysed column shows the number of residues for which the backbone conformation was analysed, and the total number of residues.

Mol	Chain	Analysed	Favoured	Allowed	Outliers	Percentiles
1	A	510/523 (98%)	484 (95%)	21 (4%)	5 (1%)	15 32
1	B	507/523 (97%)	484 (96%)	19 (4%)	4 (1%)	19 39
1	C	506/523 (97%)	485 (96%)	17 (3%)	4 (1%)	19 39
1	D	508/523 (97%)	485 (96%)	19 (4%)	4 (1%)	19 39
All	All	2031/2092 (97%)	1938 (95%)	76 (4%)	17 (1%)	19 39

All (17) Ramachandran outliers are listed below:

Mol	Chain	Res	Type
1	A	178	ASP
1	A	263	LYS

Continued on next page...

*Continued from previous page...*

Mol	Chain	Res	Type
1	B	263	LYS
1	C	263	LYS
1	D	263	LYS
1	C	160	GLY
1	A	344	LYS
1	B	179	VAL
1	B	344	LYS
1	C	344	LYS
1	D	344	LYS
1	A	343	ALA
1	B	343	ALA
1	C	343	ALA
1	D	343	ALA
1	A	177	GLY
1	D	179	VAL

### 5.3.2 Protein sidechains [i](#)

In the following table, the Percentiles column shows the percent sidechain outliers of the chain as a percentile score with respect to all X-ray entries followed by that with respect to entries of similar resolution.

The Analysed column shows the number of residues for which the sidechain conformation was analysed, and the total number of residues.

Mol	Chain	Analysed	Rotameric	Outliers	Percentiles	
1	A	416/422 (99%)	388 (93%)	28 (7%)	16	33
1	B	416/422 (99%)	393 (94%)	23 (6%)	21	43
1	C	415/422 (98%)	387 (93%)	28 (7%)	16	33
1	D	416/422 (99%)	395 (95%)	21 (5%)	24	47
All	All	1663/1688 (98%)	1563 (94%)	100 (6%)	19	39

All (100) residues with a non-rotameric sidechain are listed below:

Mol	Chain	Res	Type
1	A	103	ARG
1	A	113	ASN
1	A	164	LEU
1	A	193	ARG
1	A	194	ARG
1	A	197	ARG

*Continued on next page...*

*Continued from previous page...*

<b>Mol</b>	<b>Chain</b>	<b>Res</b>	<b>Type</b>
1	A	224	ARG
1	A	240	ASP
1	A	243	GLU
1	A	247	LYS
1	A	253	ARG
1	A	255	SER
1	A	260	SER
1	A	263	LYS
1	A	264	ASP
1	A	285	ARG
1	A	323	ARG
1	A	359	ARG
1	A	398	ARG
1	A	401	GLN
1	A	413	MET
1	A	416	SER
1	A	424	VAL
1	A	481	ARG
1	A	486	ARG
1	A	493	ILE
1	A	496	GLU
1	A	522	LEU
1	B	113	ASN
1	B	164	LEU
1	B	188	ARG
1	B	193	ARG
1	B	197	ARG
1	B	235	ARG
1	B	240	ASP
1	B	243	GLU
1	B	250	GLU
1	B	255	SER
1	B	260	SER
1	B	264	ASP
1	B	323	ARG
1	B	390	GLU
1	B	398	ARG
1	B	401	GLN
1	B	413	MET
1	B	416	SER
1	B	424	VAL
1	B	448	GLN

*Continued on next page...*



*Continued from previous page...*

<b>Mol</b>	<b>Chain</b>	<b>Res</b>	<b>Type</b>
1	B	486	ARG
1	B	493	ILE
1	B	522	LEU
1	C	44	ARG
1	C	113	ASN
1	C	164	LEU
1	C	188	ARG
1	C	194	ARG
1	C	197	ARG
1	C	235	ARG
1	C	240	ASP
1	C	243	GLU
1	C	253	ARG
1	C	255	SER
1	C	264	ASP
1	C	267	ARG
1	C	285	ARG
1	C	323	ARG
1	C	359	ARG
1	C	390	GLU
1	C	398	ARG
1	C	401	GLN
1	C	413	MET
1	C	416	SER
1	C	424	VAL
1	C	451	ARG
1	C	481	ARG
1	C	486	ARG
1	C	493	ILE
1	C	496	GLU
1	C	522	LEU
1	D	113	ASN
1	D	138	ARG
1	D	164	LEU
1	D	193	ARG
1	D	197	ARG
1	D	235	ARG
1	D	240	ASP
1	D	243	GLU
1	D	247	LYS
1	D	250	GLU
1	D	260	SER

*Continued on next page...*

*Continued from previous page...*

Mol	Chain	Res	Type
1	D	323	ARG
1	D	359	ARG
1	D	398	ARG
1	D	401	GLN
1	D	413	MET
1	D	416	SER
1	D	424	VAL
1	D	481	ARG
1	D	486	ARG
1	D	493	ILE

Sometimes sidechains can be flipped to improve hydrogen bonding and reduce clashes. All (18) such sidechains are listed below:

Mol	Chain	Res	Type
1	A	34	ASN
1	A	113	ASN
1	A	353	ASN
1	A	401	GLN
1	B	34	ASN
1	B	113	ASN
1	B	360	GLN
1	B	401	GLN
1	B	448	GLN
1	C	34	ASN
1	C	113	ASN
1	C	360	GLN
1	C	401	GLN
1	D	34	ASN
1	D	113	ASN
1	D	219	GLN
1	D	360	GLN
1	D	401	GLN

### 5.3.3 RNA [i](#)

There are no RNA molecules in this entry.

## 5.4 Non-standard residues in protein, DNA, RNA chains [i](#)

There are no non-standard protein/DNA/RNA residues in this entry.

## 5.5 Carbohydrates [i](#)

There are no monosaccharides in this entry.

## 5.6 Ligand geometry [i](#)

7 ligands are modelled in this entry.

In the following table, the Counts columns list the number of bonds (or angles) for which Mogul statistics could be retrieved, the number of bonds (or angles) that are observed in the model and the number of bonds (or angles) that are defined in the Chemical Component Dictionary. The Link column lists molecule types, if any, to which the group is linked. The Z score for a bond length (or angle) is the number of standard deviations the observed value is removed from the expected value. A bond length (or angle) with  $|Z| > 2$  is considered an outlier worth inspection. RMSZ is the root-mean-square of all Z scores of the bond lengths (or angles).

Mol	Type	Chain	Res	Link	Bond lengths			Bond angles		
					Counts	RMSZ	# Z  > 2	Counts	RMSZ	# Z  > 2
2	PLP	C	601	1	15,15,16	1.09	2 (13%)	20,22,23	0.89	1 (5%)
3	GOL	B	602	-	5,5,5	0.62	0	5,5,5	0.26	0
4	ACY	D	602	-	3,3,3	0.96	0	3,3,3	0.72	0
2	PLP	A	601	1	15,15,16	1.02	0	20,22,23	0.87	0
2	PLP	D	601	1	15,15,16	0.74	0	20,22,23	0.97	1 (5%)
2	PLP	B	601	1	15,15,16	0.90	0	20,22,23	0.94	0
3	GOL	A	602	-	5,5,5	0.68	0	5,5,5	0.25	0

In the following table, the Chirals column lists the number of chiral outliers, the number of chiral centers analysed, the number of these observed in the model and the number defined in the Chemical Component Dictionary. Similar counts are reported in the Torsion and Rings columns. '2' means no outliers of that kind were identified.

Mol	Type	Chain	Res	Link	Chirals	Torsions	Rings
2	PLP	C	601	1	-	0/6/6/8	0/1/1/1
3	GOL	B	602	-	-	2/4/4/4	-
2	PLP	A	601	1	-	0/6/6/8	0/1/1/1
2	PLP	D	601	1	-	0/6/6/8	0/1/1/1
2	PLP	B	601	1	-	0/6/6/8	0/1/1/1
3	GOL	A	602	-	-	2/4/4/4	-

All (2) bond length outliers are listed below:

Mol	Chain	Res	Type	Atoms	Z	Observed(Å)	Ideal(Å)
2	C	601	PLP	C3-C2	-2.75	1.38	1.40
2	C	601	PLP	C2-N1	2.06	1.37	1.33

All (2) bond angle outliers are listed below:

Mol	Chain	Res	Type	Atoms	Z	Observed(°)	Ideal(°)
2	D	601	PLP	C6-C5-C4	2.36	120.01	118.16
2	C	601	PLP	C5-C6-N1	-2.03	120.44	123.82

There are no chirality outliers.

All (4) torsion outliers are listed below:

Mol	Chain	Res	Type	Atoms
3	B	602	GOL	C1-C2-C3-O3
3	A	602	GOL	O1-C1-C2-C3
3	A	602	GOL	O1-C1-C2-O2
3	B	602	GOL	O2-C2-C3-O3

There are no ring outliers.

No monomer is involved in short contacts.

## 5.7 Other polymers [i](#)

There are no such residues in this entry.

## 5.8 Polymer linkage issues [i](#)

There are no chain breaks in this entry.

## 6 Fit of model and data [i](#)

### 6.1 Protein, DNA and RNA chains [i](#)

In the following table, the column labelled ‘#RSRZ> 2’ contains the number (and percentage) of RSRZ outliers, followed by percent RSRZ outliers for the chain as percentile scores relative to all X-ray entries and entries of similar resolution. The OWAB column contains the minimum, median, 95<sup>th</sup> percentile and maximum values of the occupancy-weighted average B-factor per residue. The column labelled ‘Q< 0.9’ lists the number of (and percentage) of residues with an average occupancy less than 0.9.

Mol	Chain	Analysed	<RSRZ>	#RSRZ>2	OWAB(Å <sup>2</sup> )	Q<0.9
1	A	514/523 (98%)	-0.46	0 <b>100</b>   <b>100</b>	13, 30, 62, 84	0
1	B	511/523 (97%)	-0.46	1 (0%) <b>95</b>   <b>95</b>	13, 31, 64, 87	0
1	C	510/523 (97%)	-0.48	1 (0%) <b>95</b>   <b>95</b>	13, 31, 61, 100	0
1	D	512/523 (97%)	-0.41	3 (0%) <b>89</b>   <b>88</b>	13, 32, 65, 89	0
All	All	2047/2092 (97%)	-0.45	5 (0%) <b>95</b>   <b>95</b>	13, 31, 63, 100	0

All (5) RSRZ outliers are listed below:

Mol	Chain	Res	Type	RSRZ
1	B	263	LYS	3.8
1	D	267	ARG	3.0
1	C	179	VAL	2.4
1	D	243	GLU	2.2
1	D	159	THR	2.1

### 6.2 Non-standard residues in protein, DNA, RNA chains [i](#)

There are no non-standard protein/DNA/RNA residues in this entry.

### 6.3 Carbohydrates [i](#)

There are no monosaccharides in this entry.

### 6.4 Ligands [i](#)

In the following table, the Atoms column lists the number of modelled atoms in the group and the number defined in the chemical component dictionary. The B-factors column lists the minimum,

median, 95<sup>th</sup> percentile and maximum values of B factors of atoms in the group. The column labelled 'Q< 0.9' lists the number of atoms with occupancy less than 0.9.

Mol	Type	Chain	Res	Atoms	RSCC	RSR	B-factors(Å <sup>2</sup> )	Q<0.9
3	GOL	A	602	6/6	0.87	0.12	32,35,36,38	0
2	PLP	D	601	15/16	0.95	0.14	32,35,39,40	0
2	PLP	B	601	15/16	0.95	0.11	29,33,35,36	0
3	GOL	B	602	6/6	0.95	0.11	28,29,31,31	0
2	PLP	C	601	15/16	0.96	0.13	28,32,40,41	0
2	PLP	A	601	15/16	0.96	0.10	25,30,33,33	0
4	ACY	D	602	4/4	0.97	0.11	29,30,31,38	0

## 6.5 Other polymers [i](#)

There are no such residues in this entry.