



Full wwPDB X-ray Structure Validation Report ⓘ

Jun 19, 2024 – 04:27 AM EDT

PDB ID : 4H2W
Title : Crystal structure of engineered Bradyrhizobium japonicum glycine:[carrier protein] ligase complexed with carrier protein from Agrobacterium tumefaciens and AMP
Authors : Luic, M.; Weygand-Durasevic, I.; Ivic, N.; Mocibob, M.
Deposited on : 2012-09-13
Resolution : 1.95 Å(reported)

This is a Full wwPDB X-ray Structure Validation Report for a publicly released PDB entry.

We welcome your comments at validation@mail.wwpdb.org

A user guide is available at

<https://www.wwpdb.org/validation/2017/XrayValidationReportHelp>

with specific help available everywhere you see the ⓘ symbol.

The types of validation reports are described at

<http://www.wwpdb.org/validation/2017/FAQs#types>.

The following versions of software and data (see [references ⓘ](#)) were used in the production of this report:

MolProbity : 4.02b-467
Mogul : 2022.3.0, CSD as543be (2022)
Xtriage (Phenix) : 1.20.1
EDS : 2.37.1
buster-report : 1.1.7 (2018)
Percentile statistics : 20191225.v01 (using entries in the PDB archive December 25th 2019)
Refmac : 5.8.0158
CCP4 : 7.0.044 (Gargrove)
Ideal geometry (proteins) : Engh & Huber (2001)
Ideal geometry (DNA, RNA) : Parkinson et al. (1996)
Validation Pipeline (wwPDB-VP) : 2.37.1

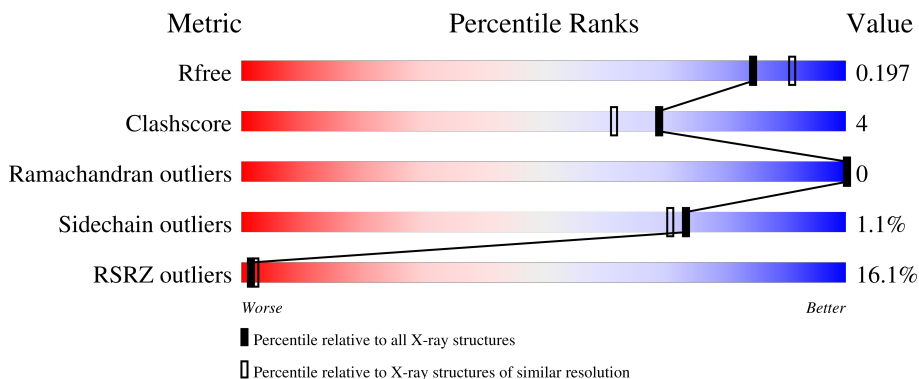
1 Overall quality at a glance

The following experimental techniques were used to determine the structure:

X-RAY DIFFRACTION

The reported resolution of this entry is 1.95 Å.

Percentile scores (ranging between 0-100) for global validation metrics of the entry are shown in the following graphic. The table shows the number of entries on which the scores are based.



Metric	Whole archive (#Entries)	Similar resolution (#Entries, resolution range(Å))
R_{free}	130704	2580 (1.96-1.96)
Clashscore	141614	2705 (1.96-1.96)
Ramachandran outliers	138981	2678 (1.96-1.96)
Sidechain outliers	138945	2678 (1.96-1.96)
RSRZ outliers	127900	2539 (1.96-1.96)

The table below summarises the geometric issues observed across the polymeric chains and their fit to the electron density. The red, orange, yellow and green segments of the lower bar indicate the fraction of residues that contain outliers for ≥ 3 , 2, 1 and 0 types of geometric quality criteria respectively. A grey segment represents the fraction of residues that are not modelled. The numeric value for each fraction is indicated below the corresponding segment, with a dot representing fractions $\leq 5\%$. The upper red bar (where present) indicates the fraction of residues that have poor fit to the electron density. The numeric value is given above the bar.

Mol	Chain	Length	Quality of chain
1	A	346	
1	B	346	
2	C	103	
2	D	103	

2 Entry composition i

There are 8 unique types of molecules in this entry. The entry contains 6302 atoms, of which 0 are hydrogens and 0 are deuteriums.

In the tables below, the ZeroOcc column contains the number of atoms modelled with zero occupancy, the AltConf column contains the number of residues with at least one atom in alternate conformation and the Trace column contains the number of residues modelled with at most 2 atoms.

- Molecule 1 is a protein called Amino acid--[acyl-carrier-protein] ligase 1.

Mol	Chain	Residues	Atoms					ZeroOcc	AltConf	Trace
			Total	C	N	O	S			
1	A	295	2379	1507	427	427	18	0	15	0
1	B	296	2385	1504	431	432	18	0	15	0

There are 40 discrepancies between the modelled and reference sequences:

Chain	Residue	Modelled	Actual	Comment	Reference
A	-19	MET	-	EXPRESSION TAG	UNP Q89VT8
A	-18	GLY	-	EXPRESSION TAG	UNP Q89VT8
A	-17	SER	-	EXPRESSION TAG	UNP Q89VT8
A	-16	SER	-	EXPRESSION TAG	UNP Q89VT8
A	-15	HIS	-	EXPRESSION TAG	UNP Q89VT8
A	-14	HIS	-	EXPRESSION TAG	UNP Q89VT8
A	-13	HIS	-	EXPRESSION TAG	UNP Q89VT8
A	-12	HIS	-	EXPRESSION TAG	UNP Q89VT8
A	-11	HIS	-	EXPRESSION TAG	UNP Q89VT8
A	-10	HIS	-	EXPRESSION TAG	UNP Q89VT8
A	-9	SER	-	EXPRESSION TAG	UNP Q89VT8
A	-8	SER	-	EXPRESSION TAG	UNP Q89VT8
A	-7	GLY	-	EXPRESSION TAG	UNP Q89VT8
A	-6	LEU	-	EXPRESSION TAG	UNP Q89VT8
A	-5	VAL	-	EXPRESSION TAG	UNP Q89VT8
A	-4	PRO	-	EXPRESSION TAG	UNP Q89VT8
A	-3	ARG	-	EXPRESSION TAG	UNP Q89VT8
A	-2	GLY	-	EXPRESSION TAG	UNP Q89VT8
A	-1	SER	-	EXPRESSION TAG	UNP Q89VT8
A	0	HIS	-	EXPRESSION TAG	UNP Q89VT8
B	-19	MET	-	EXPRESSION TAG	UNP Q89VT8
B	-18	GLY	-	EXPRESSION TAG	UNP Q89VT8
B	-17	SER	-	EXPRESSION TAG	UNP Q89VT8
B	-16	SER	-	EXPRESSION TAG	UNP Q89VT8
B	-15	HIS	-	EXPRESSION TAG	UNP Q89VT8

Continued on next page...

Continued from previous page...

Chain	Residue	Modelled	Actual	Comment	Reference
B	-14	HIS	-	EXPRESSION TAG	UNP Q89VT8
B	-13	HIS	-	EXPRESSION TAG	UNP Q89VT8
B	-12	HIS	-	EXPRESSION TAG	UNP Q89VT8
B	-11	HIS	-	EXPRESSION TAG	UNP Q89VT8
B	-10	HIS	-	EXPRESSION TAG	UNP Q89VT8
B	-9	SER	-	EXPRESSION TAG	UNP Q89VT8
B	-8	SER	-	EXPRESSION TAG	UNP Q89VT8
B	-7	GLY	-	EXPRESSION TAG	UNP Q89VT8
B	-6	LEU	-	EXPRESSION TAG	UNP Q89VT8
B	-5	VAL	-	EXPRESSION TAG	UNP Q89VT8
B	-4	PRO	-	EXPRESSION TAG	UNP Q89VT8
B	-3	ARG	-	EXPRESSION TAG	UNP Q89VT8
B	-2	GLY	-	EXPRESSION TAG	UNP Q89VT8
B	-1	SER	-	EXPRESSION TAG	UNP Q89VT8
B	0	HIS	-	EXPRESSION TAG	UNP Q89VT8

- Molecule 2 is a protein called Aminoacyl carrier protein.

Mol	Chain	Residues	Atoms					ZeroOcc	AltConf	Trace
			Total	C	N	O	S			
2	C	78	570	365	92	111	2	0	0	0
2	D	75	506	324	85	96	1	0	0	0

There are 40 discrepancies between the modelled and reference sequences:

Chain	Residue	Modelled	Actual	Comment	Reference
C	-19	MET	-	EXPRESSION TAG	UNP A9CHM9
C	-18	GLY	-	EXPRESSION TAG	UNP A9CHM9
C	-17	SER	-	EXPRESSION TAG	UNP A9CHM9
C	-16	SER	-	EXPRESSION TAG	UNP A9CHM9
C	-15	HIS	-	EXPRESSION TAG	UNP A9CHM9
C	-14	HIS	-	EXPRESSION TAG	UNP A9CHM9
C	-13	HIS	-	EXPRESSION TAG	UNP A9CHM9
C	-12	HIS	-	EXPRESSION TAG	UNP A9CHM9
C	-11	HIS	-	EXPRESSION TAG	UNP A9CHM9
C	-10	HIS	-	EXPRESSION TAG	UNP A9CHM9
C	-9	SER	-	EXPRESSION TAG	UNP A9CHM9
C	-8	SER	-	EXPRESSION TAG	UNP A9CHM9
C	-7	GLY	-	EXPRESSION TAG	UNP A9CHM9
C	-6	LEU	-	EXPRESSION TAG	UNP A9CHM9
C	-5	VAL	-	EXPRESSION TAG	UNP A9CHM9

Continued on next page...

Continued from previous page...

Chain	Residue	Modelled	Actual	Comment	Reference
C	-4	PRO	-	EXPRESSION TAG	UNP A9CHM9
C	-3	ARG	-	EXPRESSION TAG	UNP A9CHM9
C	-2	GLY	-	EXPRESSION TAG	UNP A9CHM9
C	-1	SER	-	EXPRESSION TAG	UNP A9CHM9
C	0	HIS	-	EXPRESSION TAG	UNP A9CHM9
D	-19	MET	-	EXPRESSION TAG	UNP A9CHM9
D	-18	GLY	-	EXPRESSION TAG	UNP A9CHM9
D	-17	SER	-	EXPRESSION TAG	UNP A9CHM9
D	-16	SER	-	EXPRESSION TAG	UNP A9CHM9
D	-15	HIS	-	EXPRESSION TAG	UNP A9CHM9
D	-14	HIS	-	EXPRESSION TAG	UNP A9CHM9
D	-13	HIS	-	EXPRESSION TAG	UNP A9CHM9
D	-12	HIS	-	EXPRESSION TAG	UNP A9CHM9
D	-11	HIS	-	EXPRESSION TAG	UNP A9CHM9
D	-10	HIS	-	EXPRESSION TAG	UNP A9CHM9
D	-9	SER	-	EXPRESSION TAG	UNP A9CHM9
D	-8	SER	-	EXPRESSION TAG	UNP A9CHM9
D	-7	GLY	-	EXPRESSION TAG	UNP A9CHM9
D	-6	LEU	-	EXPRESSION TAG	UNP A9CHM9
D	-5	VAL	-	EXPRESSION TAG	UNP A9CHM9
D	-4	PRO	-	EXPRESSION TAG	UNP A9CHM9
D	-3	ARG	-	EXPRESSION TAG	UNP A9CHM9
D	-2	GLY	-	EXPRESSION TAG	UNP A9CHM9
D	-1	SER	-	EXPRESSION TAG	UNP A9CHM9
D	0	HIS	-	EXPRESSION TAG	UNP A9CHM9

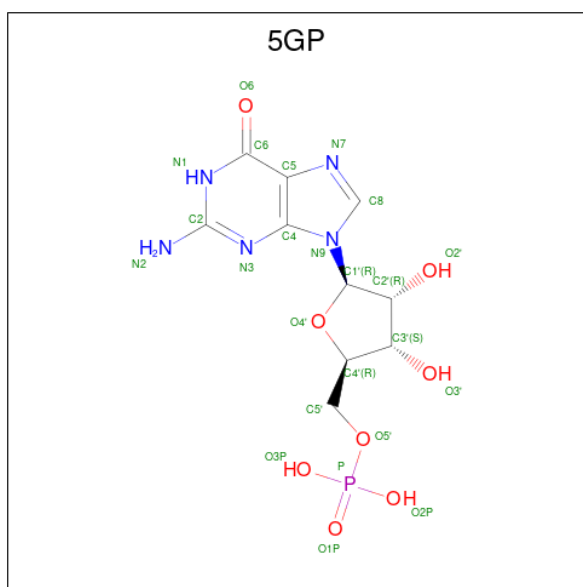
- Molecule 3 is ZINC ION (three-letter code: ZN) (formula: Zn).

Mol	Chain	Residues	Atoms	ZeroOcc	AltConf
3	A	1	Total Zn 1 1	0	0
3	B	1	Total Zn 1 1	0	0

- Molecule 4 is CHLORIDE ION (three-letter code: CL) (formula: Cl).

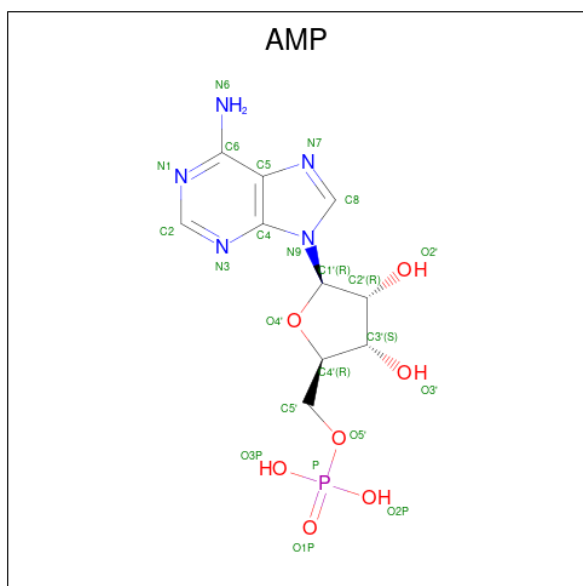
Mol	Chain	Residues	Atoms	ZeroOcc	AltConf
4	A	1	Total Cl 1 1	0	0

- Molecule 5 is GUANOSINE-5'-MONOPHOSPHATE (three-letter code: 5GP) (formula: C₁₀H₁₄N₅O₈P).



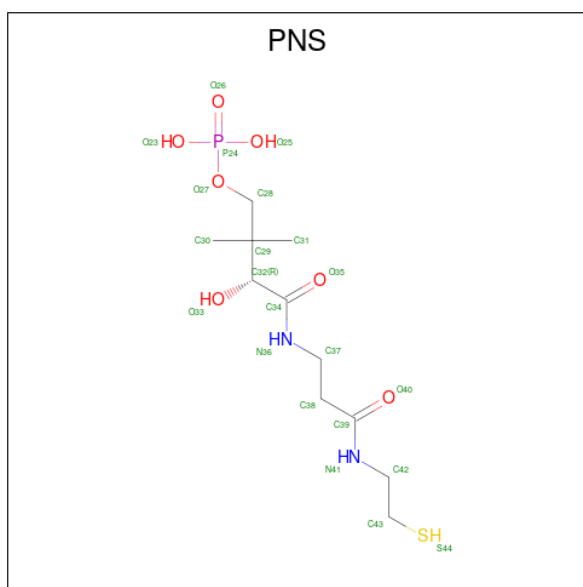
Mol	Chain	Residues	Atoms					ZeroOcc	AltConf
			Total	C	N	O	P		
5	A	1	24	10	5	8	1	0	0

- Molecule 6 is ADENOSINE MONOPHOSPHATE (three-letter code: AMP) (formula: $C_{10}H_{14}N_5O_7P$).



Mol	Chain	Residues	Atoms					ZeroOcc	AltConf
			Total	C	N	O	P		
6	B	1	23	10	5	7	1	0	0

- Molecule 7 is 4'-PHOSPHOPANTETHEINE (three-letter code: PNS) (formula: $C_{11}H_{23}N_2O_7PS$).



Mol	Chain	Residues	Atoms					ZeroOcc	AltConf	
			Total	C	N	O	P			S
7	C	1	21	11	2	6	1	1	0	0
7	D	1	21	11	2	6	1	1	0	0

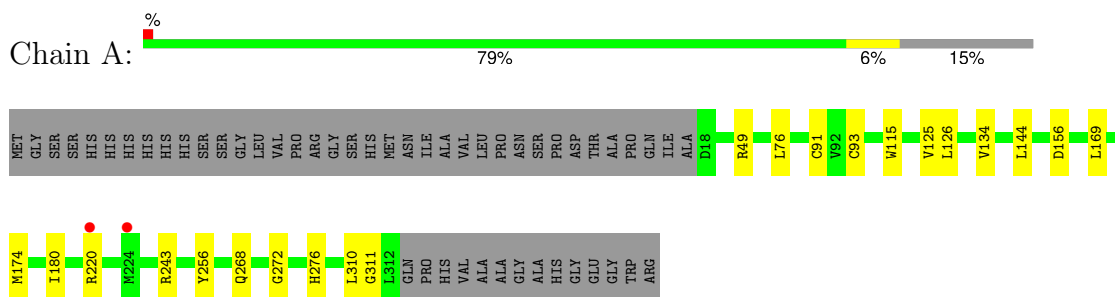
- Molecule 8 is water.

Mol	Chain	Residues	Atoms		ZeroOcc	AltConf
8	A	178	Total	O	0	0
			178	178		
8	B	190	Total	O	0	0
			190	190		
8	C	2	Total	O	0	0
			2	2		

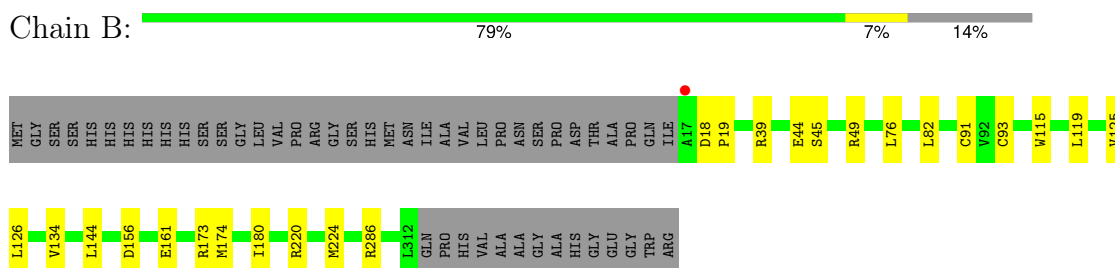
3 Residue-property plots i

These plots are drawn for all protein, RNA, DNA and oligosaccharide chains in the entry. The first graphic for a chain summarises the proportions of the various outlier classes displayed in the second graphic. The second graphic shows the sequence view annotated by issues in geometry and electron density. Residues are color-coded according to the number of geometric quality criteria for which they contain at least one outlier: green = 0, yellow = 1, orange = 2 and red = 3 or more. A red dot above a residue indicates a poor fit to the electron density ($RSRZ > 2$). Stretches of 2 or more consecutive residues without any outlier are shown as a green connector. Residues present in the sample, but not in the model, are shown in grey.

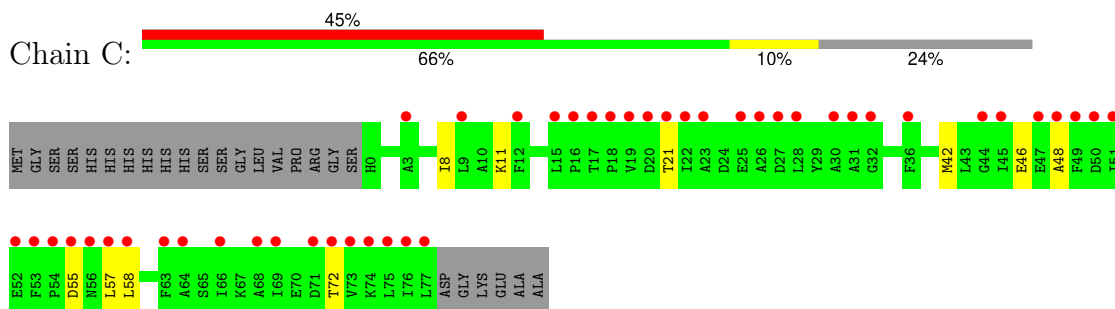
- Molecule 1: Amino acid--[acyl-carrier-protein] ligase 1



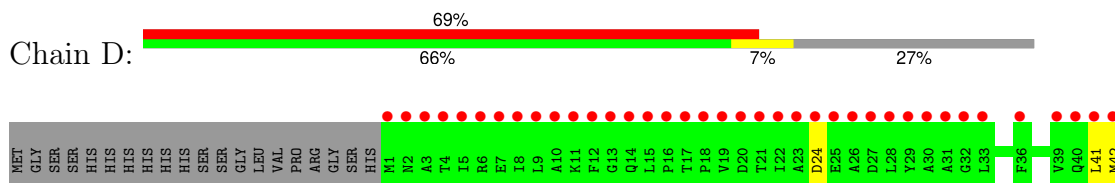
- Molecule 1: Amino acid--[acyl-carrier-protein] ligase 1



- Molecule 2: Aminoacyl carrier protein



- Molecule 2: Aminoacyl carrier protein



L43	G44	I45	E46	E47	A48	F49	D50	I51	E52	F53	P54	D55	N56	L57	L58	N59	R60	K61	S62	F63	A64	S65	I66	K67	A68	I69	E70	D71	T72	V73	K74	L75	TLE	LEU	ASP	GLY	LYS	GLU	ALA	ALA
-----	-----	-----	-----	-----	-----	-----	-----	-----	-----	-----	-----	-----	-----	-----	-----	-----	-----	-----	-----	-----	-----	-----	-----	-----	-----	-----	-----	-----	-----	-----	-----	-----	-----	-----	-----	-----	-----	-----	-----	-----

4 Data and refinement statistics

Property	Value	Source
Space group	P 21 21 21	Depositor
Cell constants a, b, c, α , β , γ	99.69Å 101.25Å 103.00Å 90.00° 90.00° 90.00°	Depositor
Resolution (Å)	45.76 – 1.95 45.75 – 1.95	Depositor EDS
% Data completeness (in resolution range)	99.9 (45.76-1.95) 99.9 (45.75-1.95)	Depositor EDS
R_{merge}	0.07	Depositor
R_{sym}	(Not available)	Depositor
$\langle I/\sigma(I) \rangle$ ¹	4.08 (at 1.95Å)	Xtriage
Refinement program	PHENIX dev_1116	Depositor
R, R_{free}	0.172 , 0.196 0.173 , 0.197	Depositor DCC
R_{free} test set	3824 reflections (5.00%)	wwPDB-VP
Wilson B-factor (Å ²)	25.2	Xtriage
Anisotropy	0.292	Xtriage
Bulk solvent k_{sol} (e/Å ³), B_{sol} (Å ²)	0.36 , 50.8	EDS
L-test for twinning ²	$\langle L \rangle = 0.49$, $\langle L^2 \rangle = 0.33$	Xtriage
Estimated twinning fraction	0.012 for -h,l,k 0.012 for -l,-k,-h 0.016 for k,h,-l 0.007 for k,l,h 0.007 for l,h,k	Xtriage
F_o, F_c correlation	0.96	EDS
Total number of atoms	6302	wwPDB-VP
Average B, all atoms (Å ²)	33.0	wwPDB-VP

Xtriage's analysis on translational NCS is as follows: *The largest off-origin peak in the Patterson function is 3.81% of the height of the origin peak. No significant pseudotranslation is detected.*

¹Intensities estimated from amplitudes.

²Theoretical values of $\langle |L| \rangle$, $\langle L^2 \rangle$ for acentric reflections are 0.5, 0.333 respectively for untwinned datasets, and 0.375, 0.2 for perfectly twinned datasets.

5 Model quality [i](#)

5.1 Standard geometry [i](#)

Bond lengths and bond angles in the following residue types are not validated in this section: CL, ZN, PNS, AMP, 5GP

The Z score for a bond length (or angle) is the number of standard deviations the observed value is removed from the expected value. A bond length (or angle) with $|Z| > 5$ is considered an outlier worth inspection. RMSZ is the root-mean-square of all Z scores of the bond lengths (or angles).

Mol	Chain	Bond lengths		Bond angles	
		RMSZ	# Z >5	RMSZ	# Z >5
1	A	0.41	0/2484	0.54	0/3365
1	B	0.39	0/2485	0.55	0/3366
2	C	0.26	0/579	0.45	0/789
2	D	0.25	0/514	0.42	0/704
All	All	0.38	0/6062	0.53	0/8224

There are no bond length outliers.

There are no bond angle outliers.

There are no chirality outliers.

There are no planarity outliers.

5.2 Too-close contacts [i](#)

In the following table, the Non-H and H(model) columns list the number of non-hydrogen atoms and hydrogen atoms in the chain respectively. The H(added) column lists the number of hydrogen atoms added and optimized by MolProbity. The Clashes column lists the number of clashes within the asymmetric unit, whereas Symm-Clashes lists symmetry-related clashes.

Mol	Chain	Non-H	H(model)	H(added)	Clashes	Symm-Clashes
1	A	2379	0	2343	19	0
1	B	2385	0	2343	20	0
2	C	570	0	542	10	0
2	D	506	0	445	4	0
3	A	1	0	0	0	0
3	B	1	0	0	0	0
4	A	1	0	0	1	0
5	A	24	0	12	3	0
6	B	23	0	12	2	0

Continued on next page...

Continued from previous page...

Mol	Chain	Non-H	H(model)	H(added)	Clashes	Symm-Clashes
7	C	21	0	21	0	0
7	D	21	0	21	0	0
8	A	178	0	0	1	0
8	B	190	0	0	1	0
8	C	2	0	0	0	0
All	All	6302	0	5739	43	0

The all-atom clashscore is defined as the number of clashes found per 1000 atoms (including hydrogen atoms). The all-atom clashscore for this structure is 4.

All (43) close contacts within the same asymmetric unit are listed below, sorted by their clash magnitude.

Atom-1	Atom-2	Interatomic distance (Å)	Clash overlap (Å)
1:A:169:LEU:H	5:A:403:5GP:HN1	1.29	0.79
1:A:220:ARG:NH2	2:D:53:PHE:O	2.25	0.70
1:B:44[B]:GLU:OE2	1:B:173:ARG:NH1	2.24	0.70
1:A:126[B]:LEU:HD21	1:B:126[B]:LEU:HD21	1.75	0.68
2:C:42:MET:HE2	2:C:58:LEU:HD21	1.77	0.66
2:D:24:ASP:HA	2:D:66:ILE:HB	1.77	0.66
1:B:45:SER:O	1:B:49[B]:ARG:HG2	2.01	0.60
1:A:115:TRP:HH2	1:B:91[B]:CYS:HG	1.50	0.58
4:A:402:CL:CL	5:A:403:5GP:N3	2.77	0.54
2:C:42:MET:CE	2:C:58:LEU:HD21	2.39	0.53
1:A:268[A]:GLN:NE2	1:A:272:GLY:O	2.42	0.52
1:A:93[B]:CYS:HG	1:B:93[B]:CYS:HB3	1.75	0.52
2:C:8:ILE:HA	2:C:11:LYS:HB2	1.92	0.52
1:B:224:MET:HB2	2:C:58:LEU:HD22	1.93	0.50
1:A:91[B]:CYS:HG	1:B:115:TRP:HH2	1.60	0.49
1:A:115:TRP:HH2	1:B:91[B]:CYS:SG	2.36	0.48
1:B:93[B]:CYS:SG	1:B:119:LEU:HD13	2.53	0.48
1:A:49[B]:ARG:HD3	1:A:310:LEU:O	2.14	0.47
2:C:57:LEU:HD13	2:C:72:THR:HG23	1.96	0.47
2:C:8:ILE:HD11	2:C:48:ALA:HB3	1.97	0.47
2:C:42:MET:HE1	2:C:46:GLU:OE2	2.16	0.46
1:B:39[B]:ARG:HD2	1:B:173:ARG:NH2	2.31	0.46
2:D:42:MET:HG3	2:D:58:LEU:HD11	1.98	0.46
2:C:55:ASP:HA	2:C:58:LEU:HB2	1.99	0.45
1:A:243:ARG:CZ	1:A:243:ARG:HB3	2.48	0.44
2:C:58:LEU:HA	2:C:58:LEU:HD23	1.70	0.44
1:A:49[A]:ARG:NE	8:A:614:HOH:O	2.40	0.44
1:B:76:LEU:HD22	1:B:125:VAL:HG21	1.99	0.43

Continued on next page...

Continued from previous page...

Atom-1	Atom-2	Interatomic distance (Å)	Clash overlap (Å)
1:A:76:LEU:HD22	1:A:125:VAL:HG21	2.01	0.43
1:A:144:LEU:HD11	1:A:180:ILE:HG22	2.00	0.43
2:D:41:LEU:O	2:D:45:ILE:HG12	2.19	0.43
1:A:256:TYR:OH	1:A:276:HIS:ND1	2.41	0.42
1:A:93[B]:CYS:HG	1:B:93[B]:CYS:CB	2.32	0.42
1:B:39[A]:ARG:NH1	8:B:550:HOH:O	2.35	0.41
1:B:174[B]:MET:SD	6:B:402:AMP:O4'	2.79	0.41
1:A:115:TRP:CE2	1:B:82:LEU:HD11	2.55	0.41
1:B:220:ARG:NH1	2:C:46:GLU:OE2	2.53	0.41
1:A:49[A]:ARG:NH1	1:A:311:GLY:O	2.54	0.41
1:B:286:ARG:HD2	6:B:402:AMP:H2'	2.03	0.40
1:A:126[A]:LEU:HD11	1:B:126[A]:LEU:HD11	2.04	0.40
1:A:174[A]:MET:SD	5:A:403:5GP:O4'	2.80	0.40
1:B:18:ASP:HA	1:B:19:PRO:HD3	1.96	0.40
1:B:144:LEU:HD11	1:B:180:ILE:HG22	2.03	0.40

There are no symmetry-related clashes.

5.3 Torsion angles [i](#)

5.3.1 Protein backbone [i](#)

In the following table, the Percentiles column shows the percent Ramachandran outliers of the chain as a percentile score with respect to all X-ray entries followed by that with respect to entries of similar resolution.

The Analysed column shows the number of residues for which the backbone conformation was analysed, and the total number of residues.

Mol	Chain	Analysed	Favoured	Allowed	Outliers	Percentiles	
1	A	308/346 (89%)	305 (99%)	3 (1%)	0	100	100
1	B	309/346 (89%)	306 (99%)	3 (1%)	0	100	100
2	C	76/103 (74%)	72 (95%)	4 (5%)	0	100	100
2	D	73/103 (71%)	70 (96%)	3 (4%)	0	100	100
All	All	766/898 (85%)	753 (98%)	13 (2%)	0	100	100

There are no Ramachandran outliers to report.

5.3.2 Protein sidechains [i](#)

In the following table, the Percentiles column shows the percent sidechain outliers of the chain as a percentile score with respect to all X-ray entries followed by that with respect to entries of similar resolution.

The Analysed column shows the number of residues for which the sidechain conformation was analysed, and the total number of residues.

Mol	Chain	Analysed	Rotameric	Outliers	Percentiles	
1	A	252/279 (90%)	250 (99%)	2 (1%)	81	80
1	B	252/279 (90%)	249 (99%)	3 (1%)	71	68
2	C	56/84 (67%)	55 (98%)	1 (2%)	59	53
2	D	41/84 (49%)	41 (100%)	0	100	100
All	All	601/726 (83%)	595 (99%)	6 (1%)	73	74

All (6) residues with a non-rotameric sidechain are listed below:

Mol	Chain	Res	Type
1	A	134	VAL
1	A	156	ASP
1	B	134	VAL
1	B	156	ASP
1	B	161	GLU
2	C	21	THR

Sometimes sidechains can be flipped to improve hydrogen bonding and reduce clashes. There are no such sidechains identified.

5.3.3 RNA [i](#)

There are no RNA molecules in this entry.

5.4 Non-standard residues in protein, DNA, RNA chains [i](#)

There are no non-standard protein/DNA/RNA residues in this entry.

5.5 Carbohydrates [i](#)

There are no monosaccharides in this entry.

5.6 Ligand geometry

Of 7 ligands modelled in this entry, 3 are monoatomic - leaving 4 for Mogul analysis.

In the following table, the Counts columns list the number of bonds (or angles) for which Mogul statistics could be retrieved, the number of bonds (or angles) that are observed in the model and the number of bonds (or angles) that are defined in the Chemical Component Dictionary. The Link column lists molecule types, if any, to which the group is linked. The Z score for a bond length (or angle) is the number of standard deviations the observed value is removed from the expected value. A bond length (or angle) with $|Z| > 2$ is considered an outlier worth inspection. RMSZ is the root-mean-square of all Z scores of the bond lengths (or angles).

Mol	Type	Chain	Res	Link	Bond lengths			Bond angles		
					Counts	RMSZ	# Z > 2	Counts	RMSZ	# Z > 2
6	AMP	B	402	-	21,25,25	0.66	0	23,38,38	0.86	1 (4%)
7	PNS	C	101	2	15,20,21	0.40	0	18,26,29	0.53	0
7	PNS	D	101	2	15,20,21	0.51	0	18,26,29	0.44	0
5	5GP	A	403	-	22,26,26	0.86	2 (9%)	24,40,40	0.65	1 (4%)

In the following table, the Chirals column lists the number of chiral outliers, the number of chiral centers analysed, the number of these observed in the model and the number defined in the Chemical Component Dictionary. Similar counts are reported in the Torsion and Rings columns. '-' means no outliers of that kind were identified.

Mol	Type	Chain	Res	Link	Chirals	Torsions	Rings
6	AMP	B	402	-	-	2/6/26/26	0/3/3/3
7	PNS	C	101	2	-	0/24/26/27	-
7	PNS	D	101	2	-	0/24/26/27	-
5	5GP	A	403	-	-	0/6/26/26	0/3/3/3

All (2) bond length outliers are listed below:

Mol	Chain	Res	Type	Atoms	Z	Observed(Å)	Ideal(Å)
5	A	403	5GP	C8-N7	-2.12	1.31	1.34
5	A	403	5GP	C5-C4	-2.08	1.38	1.43

All (2) bond angle outliers are listed below:

Mol	Chain	Res	Type	Atoms	Z	Observed(°)	Ideal(°)
6	B	402	AMP	C5-C6-N6	2.24	123.72	120.31
5	A	403	5GP	O2P-P-O1P	2.03	118.75	110.83

There are no chirality outliers.

All (2) torsion outliers are listed below:

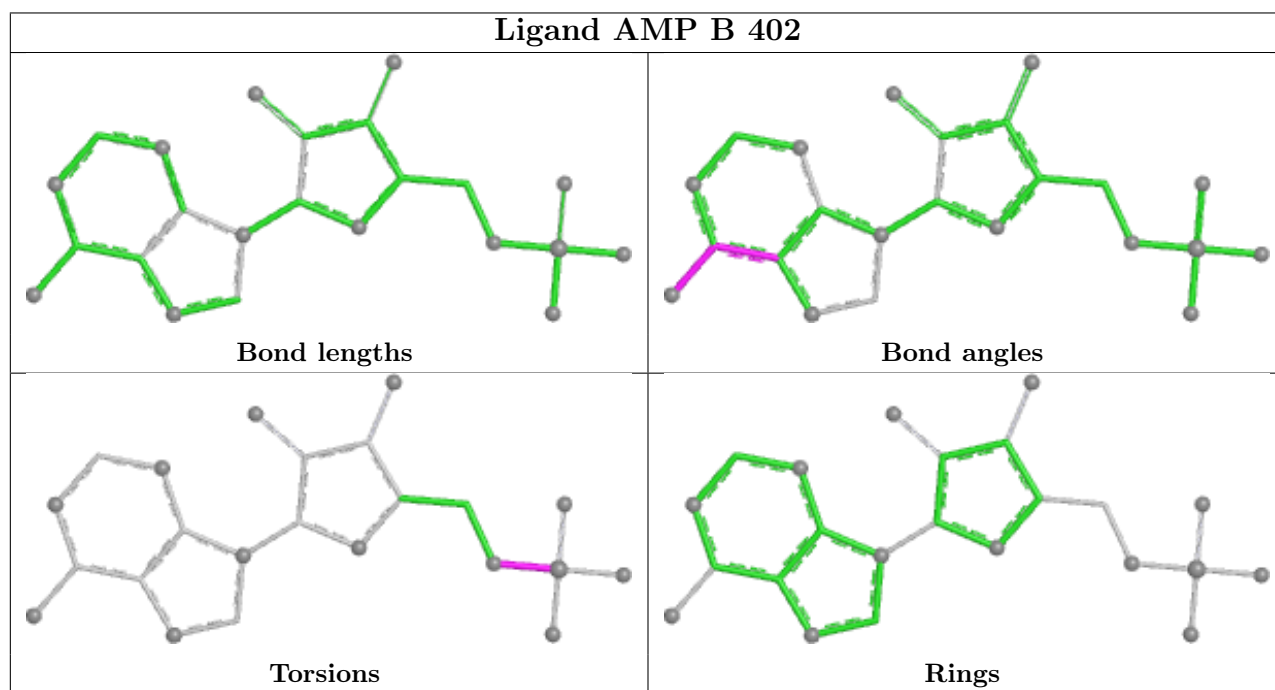
Mol	Chain	Res	Type	Atoms
6	B	402	AMP	C5'-O5'-P-O1P
6	B	402	AMP	C5'-O5'-P-O3P

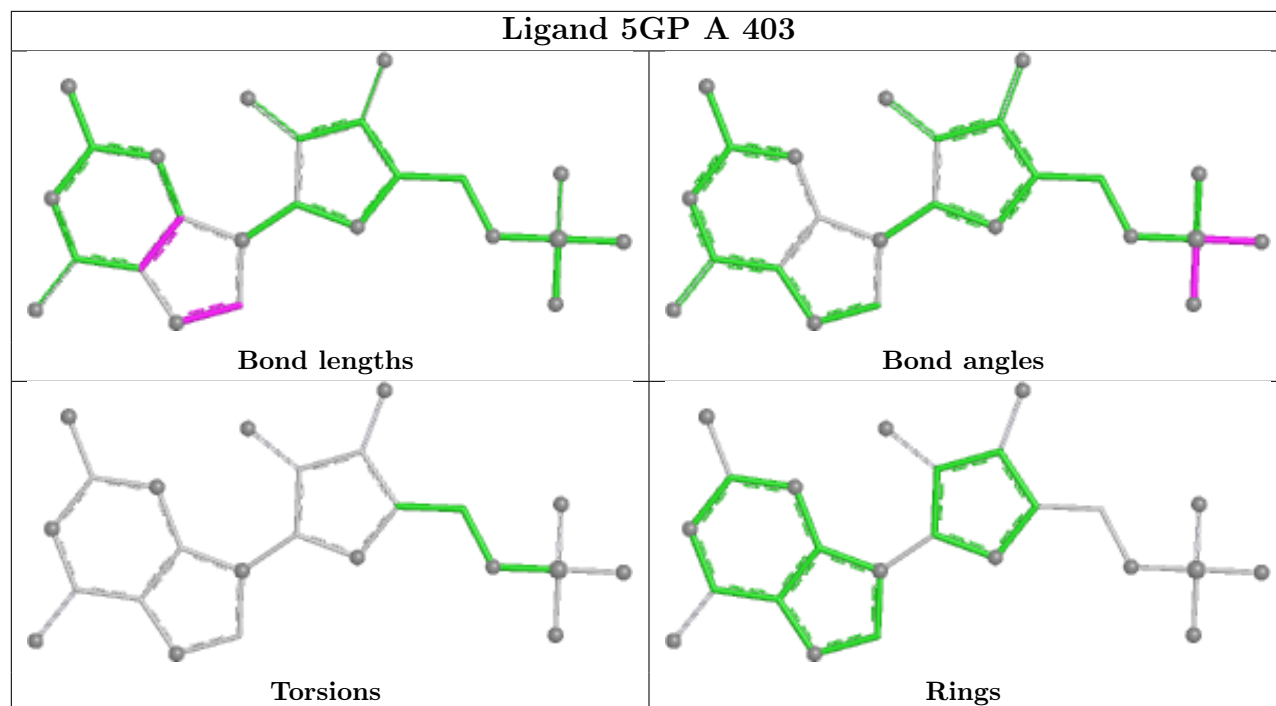
There are no ring outliers.

2 monomers are involved in 5 short contacts:

Mol	Chain	Res	Type	Clashes	Symm-Clashes
6	B	402	AMP	2	0
5	A	403	5GP	3	0

The following is a two-dimensional graphical depiction of Mogul quality analysis of bond lengths, bond angles, torsion angles, and ring geometry for all instances of the Ligand of Interest. In addition, ligands with molecular weight > 250 and outliers as shown on the validation Tables will also be included. For torsion angles, if less than 5% of the Mogul distribution of torsion angles is within 10 degrees of the torsion angle in question, then that torsion angle is considered an outlier. Any bond that is central to one or more torsion angles identified as an outlier by Mogul will be highlighted in the graph. For rings, the root-mean-square deviation (RMSD) between the ring in question and similar rings identified by Mogul is calculated over all ring torsion angles. If the average RMSD is greater than 60 degrees and the minimal RMSD between the ring in question and any Mogul-identified rings is also greater than 60 degrees, then that ring is considered an outlier. The outliers are highlighted in purple. The color gray indicates Mogul did not find sufficient equivalents in the CSD to analyse the geometry.





5.7 Other polymers [i](#)

There are no such residues in this entry.

5.8 Polymer linkage issues [i](#)

There are no chain breaks in this entry.

6 Fit of model and data

6.1 Protein, DNA and RNA chains

In the following table, the column labelled ‘#RSRZ > 2’ contains the number (and percentage) of RSRZ outliers, followed by percent RSRZ outliers for the chain as percentile scores relative to all X-ray entries and entries of similar resolution. The OWAB column contains the minimum, median, 95th percentile and maximum values of the occupancy-weighted average B-factor per residue. The column labelled ‘Q < 0.9’ lists the number of (and percentage) of residues with an average occupancy less than 0.9.

Mol	Chain	Analysed	<RSRZ>	#RSRZ>2	OWAB(Å ²)	Q<0.9
1	A	295/346 (85%)	0.05	2 (0%) 87 92	10, 21, 46, 68	0
1	B	296/346 (85%)	-0.10	1 (0%) 94 96	12, 21, 41, 64	0
2	C	78/103 (75%)	2.67	46 (58%) 0 0	43, 61, 90, 97	0
2	D	75/103 (72%)	5.23	71 (94%) 0 0	54, 89, 108, 120	0
All	All	744/898 (82%)	0.79	120 (16%) 1 2	10, 24, 90, 120	0

All (120) RSRZ outliers are listed below:

Mol	Chain	Res	Type	RSRZ
2	D	45	ILE	13.5
2	D	73	VAL	12.2
2	D	51	ILE	11.2
2	D	3	ALA	11.1
2	D	17	THR	9.8
2	D	20	ASP	9.5
2	D	48	ALA	9.1
2	D	49	PHE	9.0
2	D	23	ALA	8.7
2	D	69	ILE	8.4
2	D	53	PHE	8.4
2	D	5	ILE	8.2
2	C	21	THR	7.6
2	D	66	ILE	7.1
2	D	18	PRO	7.1
2	D	26	ALA	6.9
2	C	51	ILE	6.9
2	D	54	PRO	6.8
2	D	63	PHE	6.8
2	D	24	ASP	6.5
2	D	4	THR	6.4

Continued on next page...

Continued from previous page...

Mol	Chain	Res	Type	RSRZ
2	D	74	LYS	6.2
2	D	41	LEU	6.1
2	D	52	GLU	6.0
2	D	64	ALA	5.8
2	D	55	ASP	5.7
2	D	72	THR	5.6
2	D	47	GLU	5.6
2	D	21	THR	5.6
2	D	50	ASP	5.6
2	D	12	PHE	5.5
2	D	75	LEU	5.5
2	C	75	LEU	5.4
2	C	15	LEU	5.3
2	D	29	TYR	5.3
2	D	22	ILE	5.3
2	C	48	ALA	5.2
2	C	20	ASP	5.1
2	D	10	ALA	5.1
2	C	28	LEU	5.0
2	C	16	PRO	5.0
2	C	17	THR	4.9
2	D	13	GLY	4.9
2	D	16	PRO	4.9
2	D	27	ASP	4.9
2	D	8	ILE	4.9
2	C	57	LEU	4.8
2	D	71	ASP	4.7
2	D	70	GLU	4.7
2	D	56	ASN	4.6
2	D	1	MET	4.5
2	D	68	ALA	4.5
2	D	7	GLU	4.5
2	D	6	ARG	4.4
2	D	61	LYS	4.4
2	D	31	ALA	4.3
2	D	43	LEU	4.3
2	D	46	GLU	4.3
2	C	55	ASP	4.3
2	C	77	LEU	4.3
2	C	19	VAL	4.3
2	D	39	VAL	4.3
2	C	36	PHE	4.2

Continued on next page...

Continued from previous page...

Mol	Chain	Res	Type	RSRZ
2	D	25	GLU	4.2
2	C	72	THR	4.1
2	D	58	LEU	4.1
2	C	76	ILE	4.1
2	C	26	ALA	4.1
2	D	44	GLY	4.1
2	D	32	GLY	4.0
1	B	17	ALA	3.9
2	C	73	VAL	3.8
2	D	57	LEU	3.8
2	C	22	ILE	3.8
2	C	50	ASP	3.7
2	D	42	MET	3.7
2	D	28	LEU	3.7
2	D	65	SER	3.7
2	D	62	SER	3.7
2	C	44	GLY	3.6
2	C	49	PHE	3.6
2	D	15	LEU	3.5
2	C	25	GLU	3.5
2	C	53	PHE	3.5
2	C	71	ASP	3.4
2	C	68	ALA	3.4
2	D	33	LEU	3.4
2	C	45	ILE	3.3
2	D	19	VAL	3.3
2	C	27	ASP	3.3
2	C	69	ILE	3.2
2	C	31	ALA	3.1
2	C	30	ALA	3.1
2	D	40	GLN	3.1
2	C	18	PRO	3.0
2	C	64	ALA	3.0
2	C	54	PRO	2.9
1	A	220	ARG	2.8
1	A	224	MET	2.8
2	C	63	PHE	2.8
2	C	74	LYS	2.7
2	D	2	ASN	2.7
2	C	56	ASN	2.7
2	C	3	ALA	2.6
2	C	66	ILE	2.6

Continued on next page...

Continued from previous page...

Mol	Chain	Res	Type	RSRZ
2	C	23	ALA	2.6
2	C	47	GLU	2.6
2	D	36	PHE	2.6
2	D	67	LYS	2.6
2	D	9	LEU	2.5
2	D	59	ASN	2.5
2	D	30	ALA	2.4
2	C	58	LEU	2.4
2	D	60	ARG	2.4
2	C	9	LEU	2.3
2	C	32	GLY	2.2
2	C	52	GLU	2.2
2	C	12	PHE	2.2
2	D	11	LYS	2.1
2	D	14	GLN	2.1

6.2 Non-standard residues in protein, DNA, RNA chains [i](#)

There are no non-standard protein/DNA/RNA residues in this entry.

6.3 Carbohydrates [i](#)

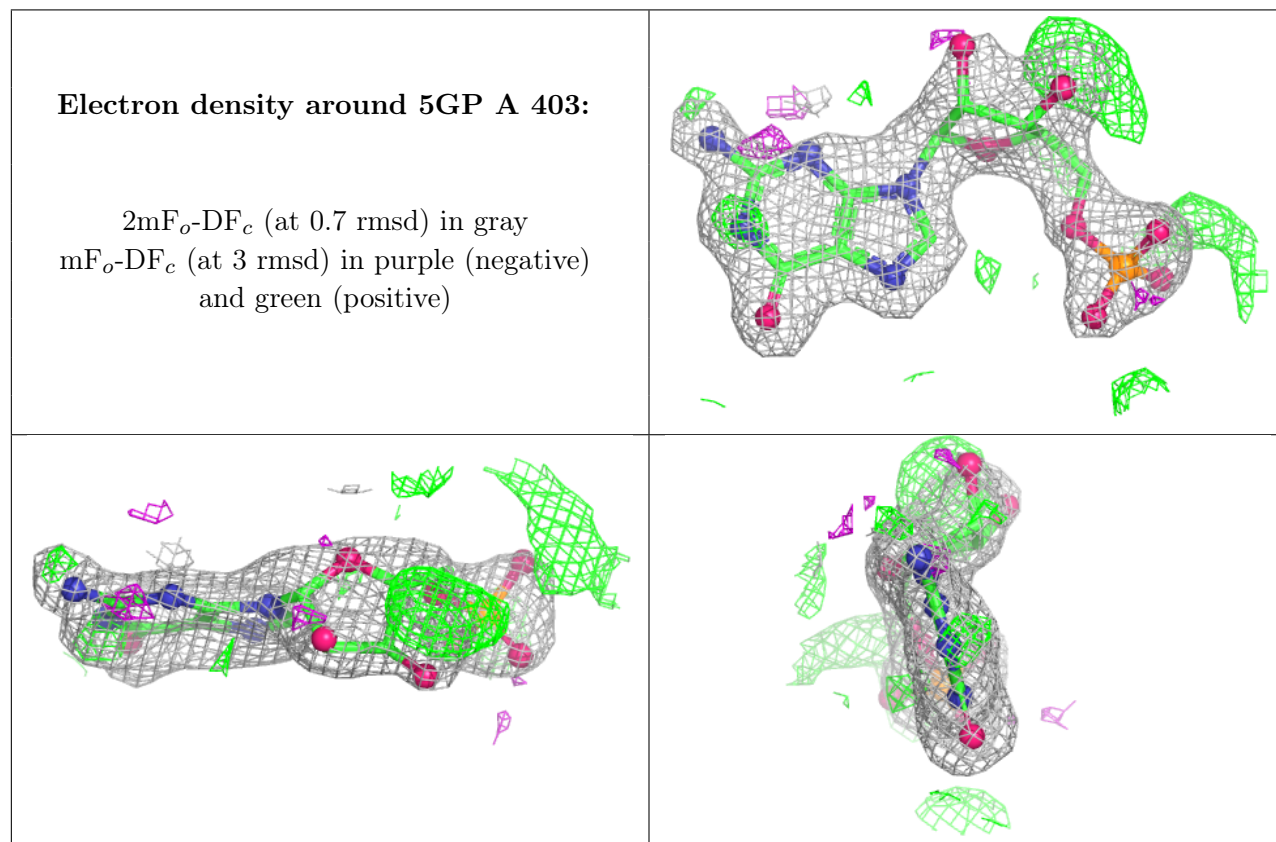
There are no monosaccharides in this entry.

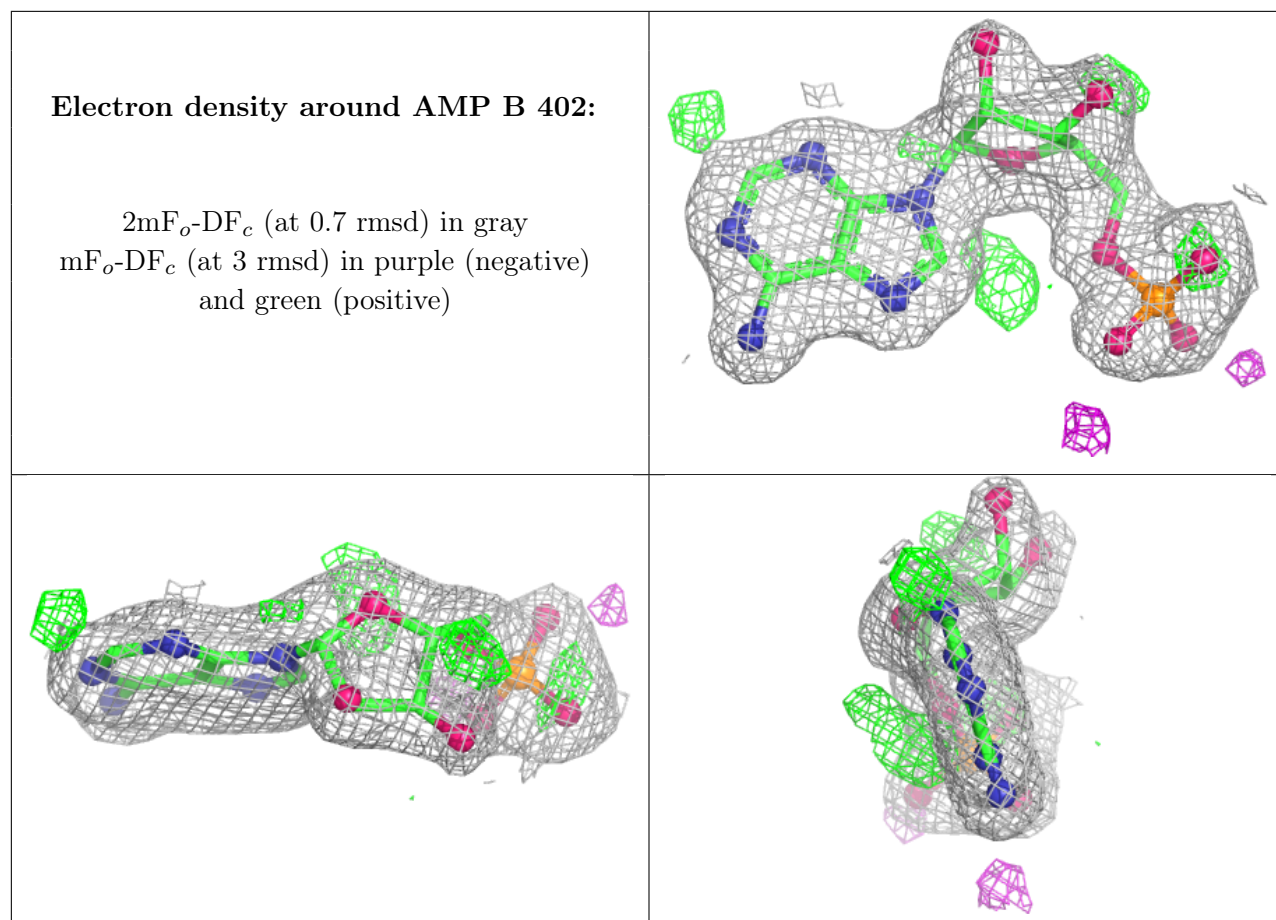
6.4 Ligands [i](#)

In the following table, the Atoms column lists the number of modelled atoms in the group and the number defined in the chemical component dictionary. The B-factors column lists the minimum, median, 95th percentile and maximum values of B factors of atoms in the group. The column labelled 'Q< 0.9' lists the number of atoms with occupancy less than 0.9.

Mol	Type	Chain	Res	Atoms	RSCC	RSR	B-factors(Å ²)	Q<0.9
5	5GP	A	403	24/24	0.87	0.18	11,23,38,47	24
3	ZN	A	401	1/1	0.93	0.08	25,25,25,25	1
7	PNS	D	101	21/22	0.93	0.14	40,53,57,64	0
7	PNS	C	101	21/22	0.94	0.12	41,49,57,61	0
6	AMP	B	402	23/23	0.94	0.12	16,23,29,30	23
3	ZN	B	401	1/1	0.99	0.07	20,20,20,20	1
4	CL	A	402	1/1	0.99	0.05	25,25,25,25	0

The following is a graphical depiction of the model fit to experimental electron density of all instances of the Ligand of Interest. In addition, ligands with molecular weight > 250 and outliers as shown on the geometry validation Tables will also be included. Each fit is shown from different orientation to approximate a three-dimensional view.





6.5 Other polymers [i](#)

There are no such residues in this entry.