



Full wwPDB X-ray Structure Validation Report ⓘ

Sep 6, 2023 – 11:34 AM EDT

PDB ID : 4EUX
Title : Structure of neuronal nitric oxide synthase heme domain in complex with 6-(5-(((3R,4R)-4-((6-amino-4-methylpyridin-2-yl)methyl)pyrrolidin-3-yl)oxy)pentyl)-4-methylpyridin-2-amine
Authors : Li, H.; Poulos, T.L.
Deposited on : 2012-04-25
Resolution : 2.14 Å(reported)

This is a Full wwPDB X-ray Structure Validation Report for a publicly released PDB entry.

We welcome your comments at validation@mail.wwpdb.org

A user guide is available at

<https://www.wwpdb.org/validation/2017/XrayValidationReportHelp>

with specific help available everywhere you see the ⓘ symbol.

The types of validation reports are described at

<http://www.wwpdb.org/validation/2017/FAQs#types>.

The following versions of software and data (see [references ⓘ](#)) were used in the production of this report:

MolProbity : 4.02b-467
Mogul : 1.8.5 (274361), CSD as541be (2020)
Xtriage (Phenix) : 1.13
EDS : 2.35
buster-report : 1.1.7 (2018)
Percentile statistics : 20191225.v01 (using entries in the PDB archive December 25th 2019)
Refmac : 5.8.0158
CCP4 : 7.0.044 (Gargrove)
Ideal geometry (proteins) : Engh & Huber (2001)
Ideal geometry (DNA, RNA) : Parkinson et al. (1996)
Validation Pipeline (wwPDB-VP) : 2.35

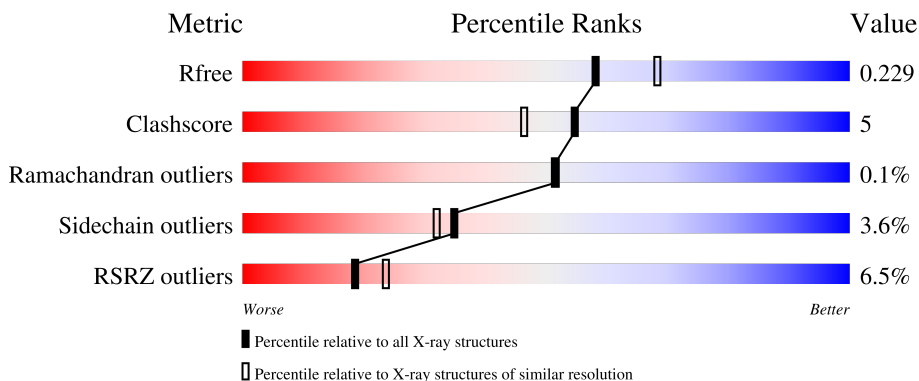
1 Overall quality at a glance i

The following experimental techniques were used to determine the structure:

X-RAY DIFFRACTION

The reported resolution of this entry is 2.14 Å.

Percentile scores (ranging between 0-100) for global validation metrics of the entry are shown in the following graphic. The table shows the number of entries on which the scores are based.



Metric	Whole archive (#Entries)	Similar resolution (#Entries, resolution range(Å))
R_{free}	130704	2523 (2.16-2.12)
Clashscore	141614	2653 (2.16-2.12)
Ramachandran outliers	138981	2618 (2.16-2.12)
Sidechain outliers	138945	2617 (2.16-2.12)
RSRZ outliers	127900	2485 (2.16-2.12)

The table below summarises the geometric issues observed across the polymeric chains and their fit to the electron density. The red, orange, yellow and green segments of the lower bar indicate the fraction of residues that contain outliers for ≥ 3 , 2, 1 and 0 types of geometric quality criteria respectively. A grey segment represents the fraction of residues that are not modelled. The numeric value for each fraction is indicated below the corresponding segment, with a dot representing fractions $\leq 5\%$. The upper red bar (where present) indicates the fraction of residues that have poor fit to the electron density. The numeric value is given above the bar.

Mol	Chain	Length	Quality of chain
1	A	422	<div style="display: flex; align-items: center;"> <div style="width: 9%; height: 10px; background-color: red; margin-right: 5px;"></div> <div style="width: 82%; height: 10px; background-color: green; margin-right: 5px;"></div> <div style="width: 12%; height: 10px; background-color: yellow; margin-right: 5px;"></div> <div style="width: 5%; height: 10px; background-color: orange; margin-right: 5px;"></div> <div style="width: 5%; height: 10px; background-color: grey;"></div> </div> <p style="margin-left: 20px;">9% 82% 12% . .</p>
1	B	422	<div style="display: flex; align-items: center;"> <div style="width: 3%; height: 10px; background-color: red; margin-right: 5px;"></div> <div style="width: 84%; height: 10px; background-color: green; margin-right: 5px;"></div> <div style="width: 12%; height: 10px; background-color: yellow; margin-right: 5px;"></div> <div style="width: 5%; height: 10px; background-color: orange; margin-right: 5px;"></div> <div style="width: 5%; height: 10px; background-color: grey;"></div> </div> <p style="margin-left: 20px;">3% 84% 12% . .</p>

2 Entry composition i

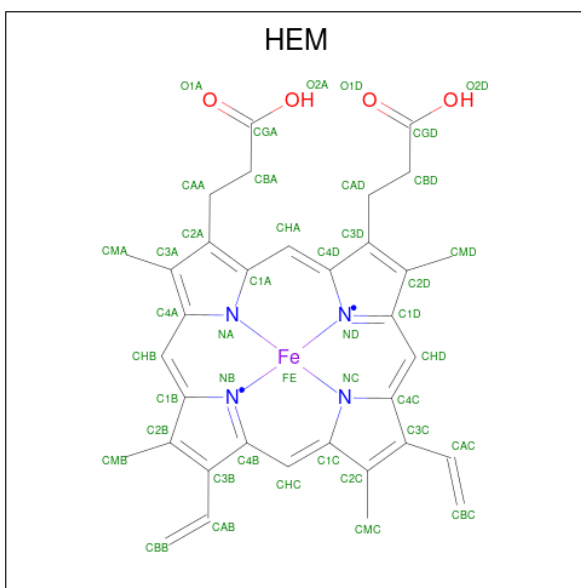
There are 7 unique types of molecules in this entry. The entry contains 7123 atoms, of which 0 are hydrogens and 0 are deuteriums.

In the tables below, the ZeroOcc column contains the number of atoms modelled with zero occupancy, the AltConf column contains the number of residues with at least one atom in alternate conformation and the Trace column contains the number of residues modelled with at most 2 atoms.

- Molecule 1 is a protein called Nitric oxide synthase, brain.

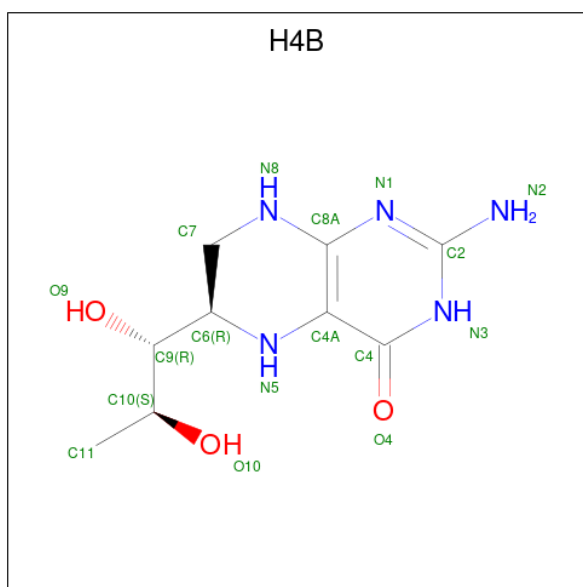
Mol	Chain	Residues	Atoms					ZeroOcc	AltConf	Trace
			Total	C	N	O	S			
1	A	407	Total 3316	C 2123	N 566	O 605	S 22	0	1	0
1	B	411	Total 3354	C 2146	N 574	O 612	S 22	0	3	0

- Molecule 2 is PROTOPORPHYRIN IX CONTAINING FE (three-letter code: HEM) (formula: $C_{34}H_{32}FeN_4O_4$).



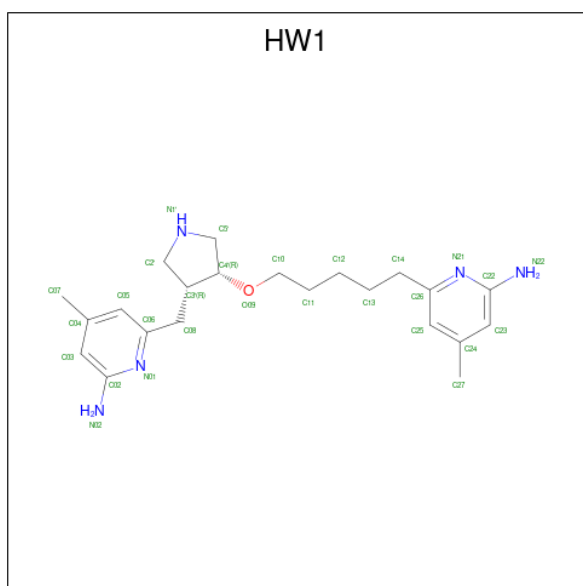
Mol	Chain	Residues	Atoms					ZeroOcc	AltConf
			Total	C	Fe	N	O		
2	A	1	Total 43	C 34	Fe 1	N 4	O 4	0	0
2	B	1	Total 43	C 34	Fe 1	N 4	O 4	0	0

- Molecule 3 is 5,6,7,8-TETRAHYDROBIOPTERIN (three-letter code: H4B) (formula: $C_9H_{15}N_5O_3$).



Mol	Chain	Residues	Atoms				ZeroOcc	AltConf
			Total	C	N	O		
3	A	1	17	9	5	3	0	0
3	B	1	17	9	5	3	0	0

- Molecule 4 is 6-[5-((3R,4R)-4-[(6-amino-4-methylpyridin-2-yl)methyl]pyrrolidin-3-yl)oxy)pentyl]-4-methylpyridin-2-amine (three-letter code: HW1) (formula: C₂₂H₃₃N₅O).



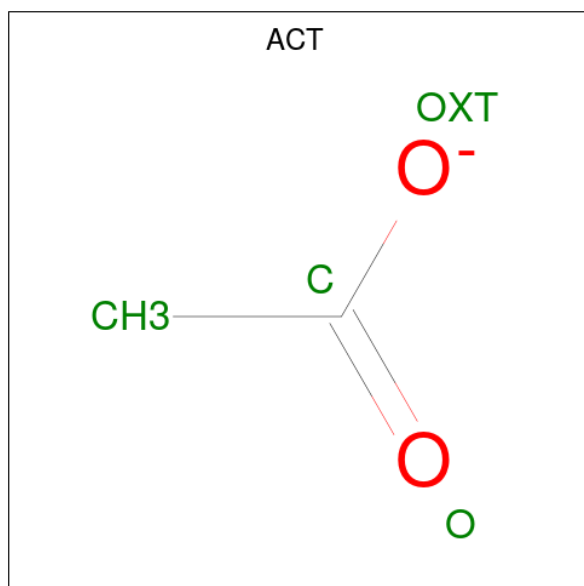
Mol	Chain	Residues	Atoms				ZeroOcc	AltConf
			Total	C	N	O		
4	A	1	28	22	5	1	0	0

Continued on next page...

Continued from previous page...

Mol	Chain	Residues	Atoms				ZeroOcc	AltConf
			Total	C	N	O		
4	B	1	28	22	5	1	0	0

- Molecule 5 is ACETATE ION (three-letter code: ACT) (formula: C₂H₃O₂).



Mol	Chain	Residues	Atoms			ZeroOcc	AltConf
			Total	C	O		
5	A	1	4	2	2	0	0
5	B	1	4	2	2	0	0

- Molecule 6 is ZINC ION (three-letter code: ZN) (formula: Zn).

Mol	Chain	Residues	Atoms		ZeroOcc	AltConf
			Total	Zn		
6	A	1	1	1	0	0

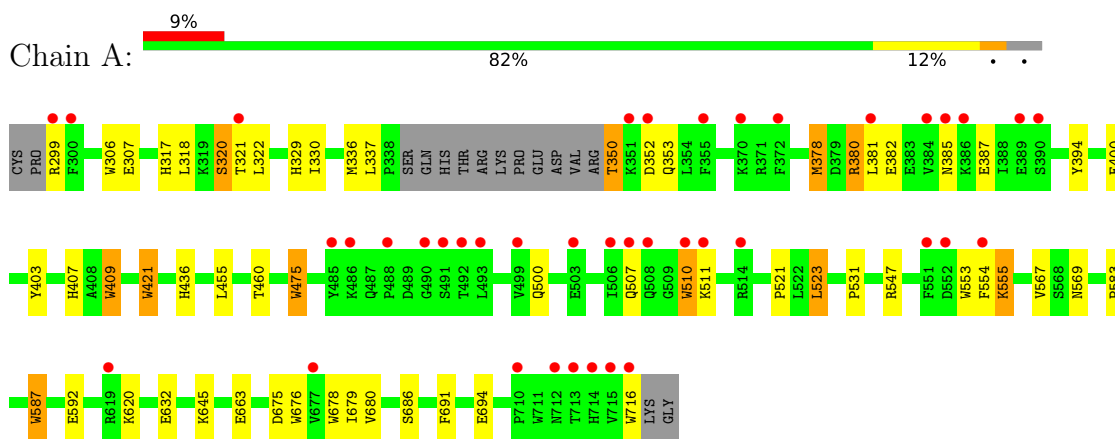
- Molecule 7 is water.

Mol	Chain	Residues	Atoms		ZeroOcc	AltConf
			Total	O		
7	A	115	115	115	0	0
7	B	153	153	153	0	0

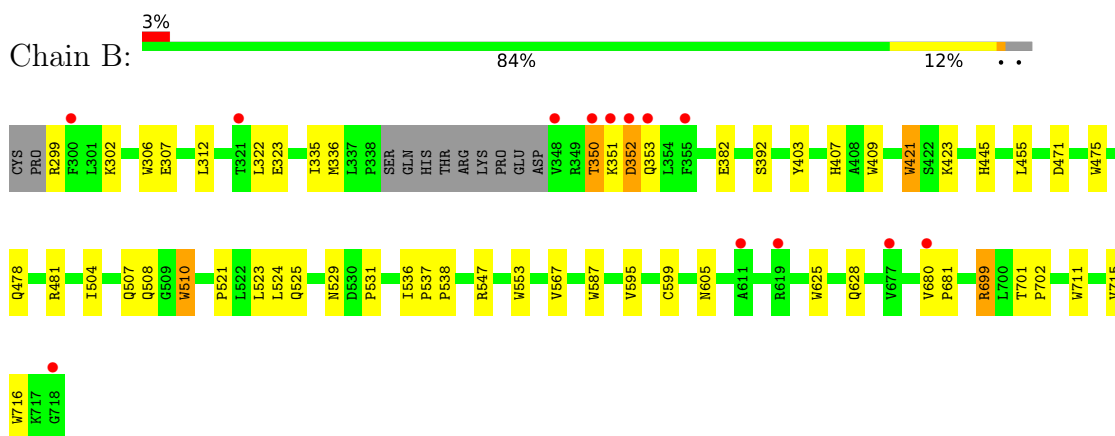
3 Residue-property plots [i](#)

These plots are drawn for all protein, RNA, DNA and oligosaccharide chains in the entry. The first graphic for a chain summarises the proportions of the various outlier classes displayed in the second graphic. The second graphic shows the sequence view annotated by issues in geometry and electron density. Residues are color-coded according to the number of geometric quality criteria for which they contain at least one outlier: green = 0, yellow = 1, orange = 2 and red = 3 or more. A red dot above a residue indicates a poor fit to the electron density ($RSRZ > 2$). Stretches of 2 or more consecutive residues without any outlier are shown as a green connector. Residues present in the sample, but not in the model, are shown in grey.

- Molecule 1: Nitric oxide synthase, brain



- Molecule 1: Nitric oxide synthase, brain



4 Data and refinement statistics

Property	Value	Source
Space group	P 21 21 21	Depositor
Cell constants a, b, c, α , β , γ	52.04Å 111.19Å 164.31Å 90.00° 90.00° 90.00°	Depositor
Resolution (Å)	50.00 – 2.14 46.04 – 2.14	Depositor EDS
% Data completeness (in resolution range)	99.0 (50.00-2.14) 99.1 (46.04-2.14)	Depositor EDS
R_{merge}	0.10	Depositor
R_{sym}	0.10	Depositor
$\langle I/\sigma(I) \rangle$ ¹	2.40 (at 2.14Å)	Xtrriage
Refinement program	REFMAC	Depositor
R, R_{free}	0.180 , 0.228 0.180 , 0.229	Depositor DCC
R_{free} test set	2630 reflections (4.98%)	wwPDB-VP
Wilson B-factor (Å ²)	40.3	Xtrriage
Anisotropy	0.193	Xtrriage
Bulk solvent k_{sol} (e/Å ³), B_{sol} (Å ²)	0.35 , 43.4	EDS
L-test for twinning ²	$\langle L \rangle = 0.49$, $\langle L^2 \rangle = 0.32$	Xtrriage
Estimated twinning fraction	No twinning to report.	Xtrriage
F_o, F_c correlation	0.96	EDS
Total number of atoms	7123	wwPDB-VP
Average B, all atoms (Å ²)	51.0	wwPDB-VP

Xtrriage's analysis on translational NCS is as follows: *The largest off-origin peak in the Patterson function is 4.35% of the height of the origin peak. No significant pseudotranslation is detected.*

¹Intensities estimated from amplitudes.

²Theoretical values of $\langle |L| \rangle$, $\langle L^2 \rangle$ for acentric reflections are 0.5, 0.333 respectively for untwinned datasets, and 0.375, 0.2 for perfectly twinned datasets.

5 Model quality [i](#)

5.1 Standard geometry [i](#)

Bond lengths and bond angles in the following residue types are not validated in this section: ACT, ZN, H4B, HW1, HEM

The Z score for a bond length (or angle) is the number of standard deviations the observed value is removed from the expected value. A bond length (or angle) with $|Z| > 5$ is considered an outlier worth inspection. RMSZ is the root-mean-square of all Z scores of the bond lengths (or angles).

Mol	Chain	Bond lengths		Bond angles	
		RMSZ	# Z >5	RMSZ	# Z >5
1	A	0.70	8/3412 (0.2%)	0.69	0/4629
1	B	0.75	7/3456 (0.2%)	0.70	1/4685 (0.0%)
All	All	0.73	15/6868 (0.2%)	0.70	1/9314 (0.0%)

All (15) bond length outliers are listed below:

Mol	Chain	Res	Type	Atoms	Z	Observed(Å)	Ideal(Å)
1	A	409	TRP	CD2-CE2	6.04	1.48	1.41
1	A	510	TRP	CD2-CE2	5.62	1.48	1.41
1	A	421	TRP	CD2-CE2	5.53	1.48	1.41
1	A	716	TRP	CD2-CE2	5.49	1.48	1.41
1	B	711	TRP	CD2-CE2	5.48	1.48	1.41
1	A	587	TRP	CD2-CE2	5.23	1.47	1.41
1	B	421	TRP	CD2-CE2	5.23	1.47	1.41
1	A	475	TRP	CD2-CE2	5.21	1.47	1.41
1	B	510	TRP	CD2-CE2	5.20	1.47	1.41
1	B	625	TRP	CD2-CE2	5.19	1.47	1.41
1	B	716	TRP	CD2-CE2	5.14	1.47	1.41
1	B	553	TRP	CD2-CE2	5.09	1.47	1.41
1	B	306	TRP	CD2-CE2	5.08	1.47	1.41
1	A	553	TRP	CD2-CE2	5.01	1.47	1.41
1	A	678	TRP	CD2-CE2	5.01	1.47	1.41

All (1) bond angle outliers are listed below:

Mol	Chain	Res	Type	Atoms	Z	Observed(°)	Ideal(°)
1	B	471	ASP	CB-CG-OD2	5.56	123.31	118.30

There are no chirality outliers.

There are no planarity outliers.

5.2 Too-close contacts

In the following table, the Non-H and H(model) columns list the number of non-hydrogen atoms and hydrogen atoms in the chain respectively. The H(added) column lists the number of hydrogen atoms added and optimized by MolProbity. The Clashes column lists the number of clashes within the asymmetric unit, whereas Symm-Clashes lists symmetry-related clashes.

Mol	Chain	Non-H	H(model)	H(added)	Clashes	Symm-Clashes
1	A	3316	0	3226	36	0
1	B	3354	0	3274	28	0
2	A	43	0	30	5	0
2	B	43	0	30	2	0
3	A	17	0	15	0	0
3	B	17	0	15	0	0
4	A	28	0	33	7	0
4	B	28	0	33	7	0
5	A	4	0	3	0	0
5	B	4	0	3	0	0
6	A	1	0	0	0	0
7	A	115	0	0	3	0
7	B	153	0	0	5	0
All	All	7123	0	6662	70	0

The all-atom clashscore is defined as the number of clashes found per 1000 atoms (including hydrogen atoms). The all-atom clashscore for this structure is 5.

All (70) close contacts within the same asymmetric unit are listed below, sorted by their clash magnitude.

Atom-1	Atom-2	Interatomic distance (Å)	Clash overlap (Å)
1:A:350:THR:N	1:A:353:GLN:HE21	1.81	0.78
2:A:801:HEM:HMC2	2:A:801:HEM:HBC2	1.67	0.77
1:A:307:GLU:HG3	7:B:1050:HOH:O	1.91	0.71
1:A:523:LEU:HD22	1:A:531:PRO:HB2	1.77	0.66
1:A:350:THR:N	1:A:353:GLN:NE2	2.46	0.64
1:B:605:ASN:ND2	7:B:1003:HOH:O	2.32	0.59
1:A:317:HIS:O	1:A:320:SER:HB3	2.03	0.59
1:B:350:THR:HB	1:B:352:ASP:HB2	1.83	0.59
1:A:475:TRP:HB2	1:A:523:LEU:HB3	1.85	0.57
1:B:409:TRP:CE3	1:B:421:TRP:HA	2.39	0.57
1:B:336:MET:HG2	4:B:804:HW1:H6	1.86	0.56
1:A:299:ARG:HG3	1:A:318:LEU:HD21	1.87	0.56
1:A:378:MET:HA	1:A:378:MET:CE	2.36	0.56
2:B:801:HEM:O2A	4:B:804:HW1:H22	2.05	0.56

Continued on next page...

Continued from previous page...

Atom-1	Atom-2	Interatomic distance (Å)	Clash overlap (Å)
4:B:804:HW1:H16	7:B:901:HOH:O	2.06	0.56
1:B:478:GLN:HB2	1:B:481:ARG:HG3	1.89	0.55
2:B:801:HEM:C1C	4:B:804:HW1:H34	2.42	0.54
1:A:337:LEU:HD21	4:A:803:HW1:H5	1.91	0.53
1:A:436:HIS:ND1	7:A:987:HOH:O	2.34	0.53
1:B:536:ILE:HG13	7:B:941:HOH:O	2.09	0.52
1:B:350:THR:HB	1:B:352:ASP:CB	2.39	0.52
1:A:675:ASP:O	1:A:679:ILE:HG12	2.10	0.51
1:A:455:LEU:HD12	1:A:587:TRP:HB3	1.92	0.50
7:A:1012:HOH:O	1:B:307:GLU:HG3	2.11	0.50
4:B:804:HW1:C5'	7:B:901:HOH:O	2.59	0.49
1:A:336:MET:HE2	4:A:803:HW1:C04	2.42	0.49
1:B:403:TYR:CE1	1:B:407:HIS:CE1	3.00	0.49
1:B:475:TRP:HB2	1:B:523:LEU:HB3	1.94	0.49
1:A:567:VAL:HG23	4:A:803:HW1:H31	1.94	0.48
1:A:455:LEU:HD12	1:A:587:TRP:CB	2.43	0.48
1:B:524:LEU:O	1:B:531:PRO:HA	2.12	0.48
1:B:455:LEU:HD23	1:B:587:TRP:HB3	1.96	0.48
1:A:686:SER:HA	1:A:691:PHE:CG	2.49	0.47
1:B:595:VAL:O	1:B:599:CYS:HB2	2.15	0.47
1:B:322:LEU:HD12	1:B:699:ARG:HB3	1.97	0.47
1:A:632:GLU:OE2	1:B:628:GLN:NE2	2.48	0.47
2:A:801:HEM:CBA	4:A:803:HW1:H24	2.45	0.46
1:A:380:ARG:HD3	1:A:400:GLU:OE1	2.15	0.46
1:A:299:ARG:O	1:A:317:HIS:CE1	2.69	0.46
1:A:378:MET:CE	1:A:381:LEU:HD23	2.46	0.46
1:A:694:GLU:HB3	1:B:335:ILE:HD13	1.98	0.45
1:A:555:LYS:NZ	1:A:555:LYS:HB3	2.31	0.45
1:B:567:VAL:CG2	4:B:804:HW1:H25	2.47	0.45
1:B:680:VAL:HA	1:B:681:PRO:HD3	1.87	0.45
2:A:801:HEM:C1C	4:A:803:HW1:H34	2.52	0.45
2:A:801:HEM:HBA1	4:A:803:HW1:H24	2.00	0.44
1:A:409:TRP:CE3	1:A:421:TRP:HA	2.53	0.44
1:A:378:MET:HE1	1:A:381:LEU:HD23	2.00	0.43
1:A:378:MET:HA	1:A:378:MET:HE2	2.01	0.43
1:A:306:TRP:CD2	1:B:336:MET:HE3	2.54	0.43
1:B:510:TRP:CE2	1:B:521:PRO:HD3	2.54	0.43
1:A:460:THR:O	1:A:583:PRO:HD2	2.19	0.43
1:B:504:ILE:O	1:B:508:GLN:HG2	2.19	0.42
1:B:567:VAL:HG23	4:B:804:HW1:H31	2.01	0.42
1:B:299:ARG:HB3	1:B:299:ARG:NH1	2.34	0.42

Continued on next page...

Continued from previous page...

Atom-1	Atom-2	Interatomic distance (Å)	Clash overlap (Å)
1:A:387:GLU:OE1	1:A:394:TYR:HA	2.19	0.42
1:A:329:HIS:C	1:A:330:ILE:HG13	2.40	0.42
1:A:403:TYR:CE1	1:A:407:HIS:CE1	3.07	0.42
1:A:554:PHE:HB3	7:A:1009:HOH:O	2.20	0.41
2:A:801:HEM:HBC2	2:A:801:HEM:CMC	2.42	0.41
1:B:537:PRO:HA	1:B:538:PRO:HD3	1.95	0.41
1:A:382:GLU:O	1:A:385:ASN:HB3	2.20	0.41
1:B:701:THR:HA	1:B:702:PRO:C	2.41	0.41
1:B:445:HIS:CD2	1:B:445:HIS:C	2.95	0.41
1:A:321:THR:HG23	1:A:322:LEU:HG	2.04	0.40
1:A:510:TRP:CE2	1:A:521:PRO:HD3	2.57	0.40
1:B:302:LYS:HA	1:B:312:LEU:O	2.21	0.40
1:A:676:TRP:CE2	1:A:680:VAL:HG21	2.56	0.40
1:A:592:GLU:OE1	4:A:803:HW1:N21	2.54	0.40
1:B:525:GLN:HG3	1:B:529:ASN:O	2.22	0.40

There are no symmetry-related clashes.

5.3 Torsion angles [i](#)

5.3.1 Protein backbone [i](#)

In the following table, the Percentiles column shows the percent Ramachandran outliers of the chain as a percentile score with respect to all X-ray entries followed by that with respect to entries of similar resolution.

The Analysed column shows the number of residues for which the backbone conformation was analysed, and the total number of residues.

Mol	Chain	Analysed	Favoured	Allowed	Outliers	Percentiles	
1	A	404/422 (96%)	393 (97%)	11 (3%)	0	100	100
1	B	410/422 (97%)	401 (98%)	8 (2%)	1 (0%)	47	45
All	All	814/844 (96%)	794 (98%)	19 (2%)	1 (0%)	51	51

All (1) Ramachandran outliers are listed below:

Mol	Chain	Res	Type
1	B	352	ASP

5.3.2 Protein sidechains [i](#)

In the following table, the Percentiles column shows the percent sidechain outliers of the chain as a percentile score with respect to all X-ray entries followed by that with respect to entries of similar resolution.

The Analysed column shows the number of residues for which the sidechain conformation was analysed, and the total number of residues.

Mol	Chain	Analysed	Rotameric	Outliers	Percentiles	
1	A	364/377 (97%)	349 (96%)	15 (4%)	30	27
1	B	369/377 (98%)	358 (97%)	11 (3%)	41	39
All	All	733/754 (97%)	707 (96%)	26 (4%)	35	33

All (26) residues with a non-rotameric sidechain are listed below:

Mol	Chain	Res	Type
1	A	320	SER
1	A	350	THR
1	A	352	ASP
1	A	378	MET
1	A	380	ARG
1	A	500	GLN
1	A	507	GLN
1	A	511	LYS
1	A	523	LEU
1	A	547	ARG
1	A	555	LYS
1	A	569	ASN
1	A	620	LYS
1	A	645	LYS
1	A	663	GLU
1	B	323	GLU
1	B	350	THR
1	B	351	LYS
1	B	353	GLN
1	B	382	GLU
1	B	392	SER
1	B	423	LYS
1	B	507	GLN
1	B	547	ARG
1	B	699	ARG
1	B	715	VAL

Sometimes sidechains can be flipped to improve hydrogen bonding and reduce clashes. All (15) such sidechains are listed below:

Mol	Chain	Res	Type
1	A	454	ASN
1	A	487	GLN
1	A	507	GLN
1	A	527	ASN
1	A	569	ASN
1	A	642	GLN
1	A	697	ASN
1	B	364	GLN
1	B	385	ASN
1	B	425	GLN
1	B	454	ASN
1	B	601	ASN
1	B	605	ASN
1	B	642	GLN
1	B	697	ASN

5.3.3 RNA [i](#)

There are no RNA molecules in this entry.

5.4 Non-standard residues in protein, DNA, RNA chains [i](#)

There are no non-standard protein/DNA/RNA residues in this entry.

5.5 Carbohydrates [i](#)

There are no monosaccharides in this entry.

5.6 Ligand geometry [i](#)

Of 9 ligands modelled in this entry, 1 is monoatomic - leaving 8 for Mogul analysis.

In the following table, the Counts columns list the number of bonds (or angles) for which Mogul statistics could be retrieved, the number of bonds (or angles) that are observed in the model and the number of bonds (or angles) that are defined in the Chemical Component Dictionary. The Link column lists molecule types, if any, to which the group is linked. The Z score for a bond length (or angle) is the number of standard deviations the observed value is removed from the expected value. A bond length (or angle) with $|Z| > 2$ is considered an outlier worth inspection. RMSZ is the root-mean-square of all Z scores of the bond lengths (or angles).

Mol	Type	Chain	Res	Link	Bond lengths			Bond angles		
					Counts	RMSZ	# Z > 2	Counts	RMSZ	# Z > 2
5	ACT	A	804	-	3,3,3	0.74	0	3,3,3	0.89	0
5	ACT	B	803	-	3,3,3	0.93	0	3,3,3	0.14	0
4	HW1	B	804	-	29,30,30	0.75	1 (3%)	34,40,40	2.36	9 (26%)
3	H4B	A	802	-	16,18,18	1.00	0	11,26,26	2.81	7 (63%)
4	HW1	A	803	-	29,30,30	0.88	1 (3%)	34,40,40	1.92	8 (23%)
2	HEM	A	801	1	41,50,50	2.38	15 (36%)	45,82,82	3.40	19 (42%)
3	H4B	B	802	-	16,18,18	1.01	0	11,26,26	2.51	5 (45%)
2	HEM	B	801	1	41,50,50	2.36	15 (36%)	45,82,82	3.53	20 (44%)

In the following table, the Chirals column lists the number of chiral outliers, the number of chiral centers analysed, the number of these observed in the model and the number defined in the Chemical Component Dictionary. Similar counts are reported in the Torsion and Rings columns. '-' means no outliers of that kind were identified.

Mol	Type	Chain	Res	Link	Chirals	Torsions	Rings
4	HW1	B	804	-	-	3/13/23/23	0/3/3/3
3	H4B	A	802	-	-	0/8/17/17	0/2/2/2
4	HW1	A	803	-	-	5/13/23/23	0/3/3/3
2	HEM	A	801	1	-	1/12/54/54	-
3	H4B	B	802	-	-	0/8/17/17	0/2/2/2
2	HEM	B	801	1	-	0/12/54/54	-

All (32) bond length outliers are listed below:

Mol	Chain	Res	Type	Atoms	Z	Observed(Å)	Ideal(Å)
2	A	801	HEM	C3C-C2C	5.63	1.48	1.40
2	B	801	HEM	C4A-NA	5.56	1.47	1.36
2	A	801	HEM	C3D-C2D	4.90	1.47	1.36
2	B	801	HEM	C3C-C2C	4.88	1.47	1.40
2	A	801	HEM	CHA-C4D	4.74	1.47	1.35
2	B	801	HEM	C3B-C2B	4.69	1.46	1.37
2	B	801	HEM	C3D-C2D	4.69	1.46	1.36
2	A	801	HEM	C4A-NA	4.63	1.45	1.36
2	A	801	HEM	C1A-NA	4.23	1.44	1.36
2	B	801	HEM	CHA-C4D	4.21	1.45	1.35
2	B	801	HEM	C1A-NA	3.64	1.43	1.36
2	A	801	HEM	C4D-ND	-3.64	1.34	1.40
2	A	801	HEM	C2C-C1C	3.42	1.50	1.42
2	B	801	HEM	CHB-C1B	3.34	1.43	1.35
2	A	801	HEM	FE-NB	3.30	2.13	1.96

Continued on next page...

Continued from previous page...

Mol	Chain	Res	Type	Atoms	Z	Observed(Å)	Ideal(Å)
2	B	801	HEM	C2A-C3A	3.09	1.46	1.37
2	A	801	HEM	CHB-C1B	3.07	1.42	1.35
2	A	801	HEM	C3B-C2B	2.92	1.43	1.37
2	B	801	HEM	FE-ND	2.86	2.11	1.96
2	B	801	HEM	C4D-ND	-2.78	1.35	1.40
2	A	801	HEM	C2A-C3A	2.75	1.45	1.37
2	B	801	HEM	FE-NB	2.73	2.10	1.96
2	A	801	HEM	FE-ND	2.60	2.09	1.96
2	A	801	HEM	C1B-NB	-2.55	1.35	1.40
2	B	801	HEM	C3B-C4B	2.48	1.49	1.44
4	A	803	HW1	C08-C3'	-2.41	1.50	1.53
2	A	801	HEM	C1B-C2B	2.24	1.48	1.44
2	A	801	HEM	C3B-C4B	2.19	1.49	1.44
4	B	804	HW1	C14-C26	2.19	1.55	1.51
2	B	801	HEM	C4A-CHB	2.09	1.46	1.41
2	B	801	HEM	O2A-CGA	-2.08	1.23	1.30
2	B	801	HEM	C1D-ND	-2.03	1.34	1.38

All (68) bond angle outliers are listed below:

Mol	Chain	Res	Type	Atoms	Z	Observed(°)	Ideal(°)
2	A	801	HEM	C3B-C2B-C1B	-10.22	98.90	106.49
2	B	801	HEM	C3B-C2B-C1B	-9.55	99.40	106.49
2	B	801	HEM	CBA-CAA-C2A	-9.17	96.96	112.62
2	A	801	HEM	C2B-C1B-NB	8.51	119.93	109.84
2	B	801	HEM	C2B-C1B-NB	8.11	119.44	109.84
2	B	801	HEM	C2D-C1D-ND	7.48	118.84	109.88
2	A	801	HEM	C2D-C1D-ND	7.36	118.70	109.88
4	B	804	HW1	C22-N21-C26	7.15	123.52	118.10
2	B	801	HEM	C4A-C3A-C2A	-6.68	102.35	107.00
2	A	801	HEM	CBA-CAA-C2A	-6.67	101.24	112.62
2	A	801	HEM	C1D-C2D-C3D	-6.63	99.98	106.96
4	B	804	HW1	C02-N01-C06	6.17	122.77	118.10
2	B	801	HEM	C3D-C4D-ND	6.05	116.90	110.17
3	B	802	H4B	C8A-C4A-C4	5.71	119.64	114.57
4	B	804	HW1	C25-C26-N21	-5.62	116.94	122.90
2	B	801	HEM	C1D-C2D-C3D	-5.58	101.09	106.96
4	A	803	HW1	C02-N01-C06	5.45	122.23	118.10
2	A	801	HEM	C3D-C4D-ND	5.13	115.88	110.17
2	A	801	HEM	CMB-C2B-C1B	4.96	132.59	125.04
2	A	801	HEM	C1B-NB-C4B	-4.91	100.00	105.07
3	A	802	H4B	C8A-C4A-C4	4.82	118.85	114.57

Continued on next page...

Continued from previous page...

Mol	Chain	Res	Type	Atoms	Z	Observed(°)	Ideal(°)
4	A	803	HW1	C22-N21-C26	4.64	121.62	118.10
2	B	801	HEM	C4D-ND-C1D	-4.45	100.47	105.07
2	B	801	HEM	C1B-NB-C4B	-3.96	100.99	105.07
2	B	801	HEM	CHD-C1D-C2D	-3.75	119.12	124.98
2	B	801	HEM	CMB-C2B-C1B	3.69	130.66	125.04
4	A	803	HW1	C5'-N1'-C2'	3.66	114.06	105.42
2	A	801	HEM	C4D-ND-C1D	-3.61	101.34	105.07
3	B	802	H4B	C4-C4A-N5	3.55	122.10	119.12
4	B	804	HW1	C5'-N1'-C2'	3.55	113.81	105.42
3	A	802	H4B	C4-C4A-N5	3.51	122.06	119.12
3	A	802	H4B	N1-C2-N3	-3.34	120.18	125.42
2	B	801	HEM	CMD-C2D-C1D	3.29	130.05	125.04
4	A	803	HW1	C04-C05-C06	-3.29	118.17	120.32
3	A	802	H4B	C2-N1-C8A	3.26	121.84	114.54
3	A	802	H4B	C2-N3-C4	3.16	120.94	115.93
4	A	803	HW1	C25-C26-N21	-3.12	119.59	122.90
2	A	801	HEM	CHD-C1D-ND	-3.11	121.05	124.43
3	A	802	H4B	N2-C2-N3	3.09	122.06	117.25
2	A	801	HEM	CHD-C1D-C2D	-3.06	120.19	124.98
2	A	801	HEM	CAD-CBD-CGD	-3.05	107.05	113.60
2	A	801	HEM	CMD-C2D-C1D	3.00	129.61	125.04
4	A	803	HW1	C14-C26-N21	2.97	120.37	115.95
4	B	804	HW1	C04-C05-C06	-2.96	118.38	120.32
2	B	801	HEM	CHB-C1B-C2B	-2.91	118.68	126.72
2	B	801	HEM	C4D-C3D-C2D	-2.91	102.66	106.90
2	A	801	HEM	C4A-C3A-C2A	-2.90	104.98	107.00
4	B	804	HW1	C14-C26-N21	2.81	120.13	115.95
2	A	801	HEM	CHB-C1B-C2B	-2.77	119.07	126.72
2	A	801	HEM	CHB-C1B-NB	-2.76	120.97	124.38
2	A	801	HEM	CMC-C2C-C3C	2.64	129.62	124.68
4	B	804	HW1	C2'-C3'-C4'	2.62	106.73	103.40
2	B	801	HEM	CHA-C4D-C3D	-2.59	120.47	125.33
3	B	802	H4B	C2-N1-C8A	2.57	120.29	114.54
3	B	802	H4B	N1-C2-N3	-2.39	121.66	125.42
3	A	802	H4B	C4A-N5-C6	-2.36	114.75	121.16
2	A	801	HEM	CHA-C4D-C3D	-2.35	120.92	125.33
2	B	801	HEM	CHD-C1D-ND	-2.30	121.93	124.43
4	A	803	HW1	C06-C08-C3'	-2.28	108.05	115.55
4	B	804	HW1	N02-C02-N01	2.26	120.07	116.49
2	B	801	HEM	CAD-C3D-C4D	2.26	128.61	124.66
2	B	801	HEM	CMC-C2C-C3C	2.25	128.89	124.68
2	B	801	HEM	CBD-CAD-C3D	-2.23	106.43	112.63

Continued on next page...

Continued from previous page...

Mol	Chain	Res	Type	Atoms	Z	Observed(°)	Ideal(°)
2	B	801	HEM	CHB-C1B-NB	-2.15	121.72	124.38
4	A	803	HW1	C2'-C3'-C4'	2.14	106.13	103.40
2	A	801	HEM	CBD-CAD-C3D	-2.09	106.82	112.63
4	B	804	HW1	C24-C25-C26	2.05	121.66	120.32
3	B	802	H4B	N2-C2-N3	2.01	120.38	117.25

There are no chirality outliers.

All (9) torsion outliers are listed below:

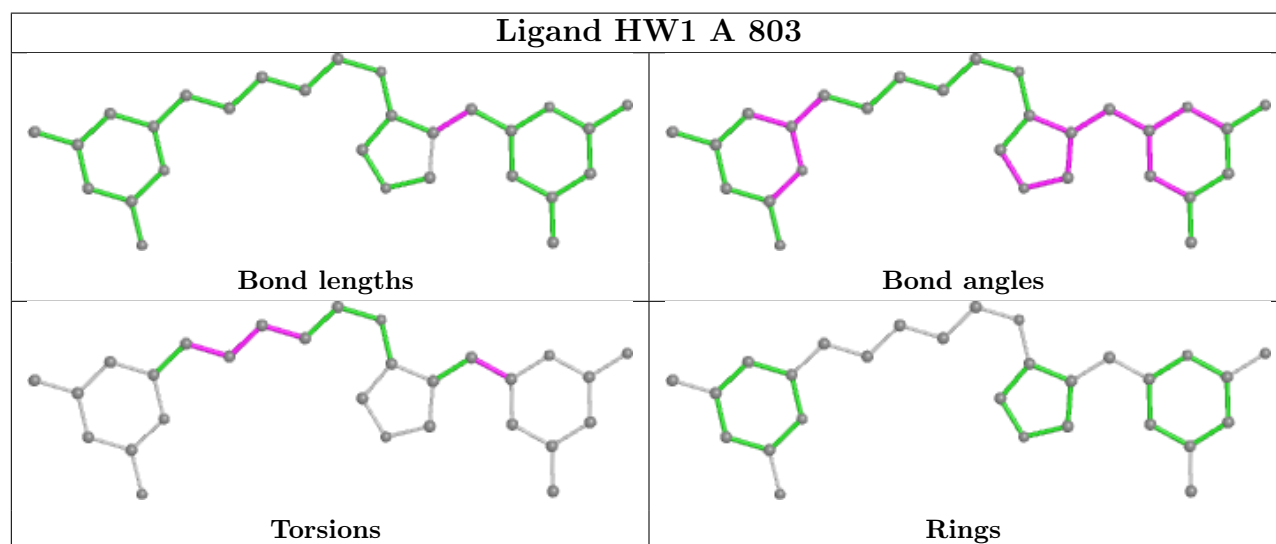
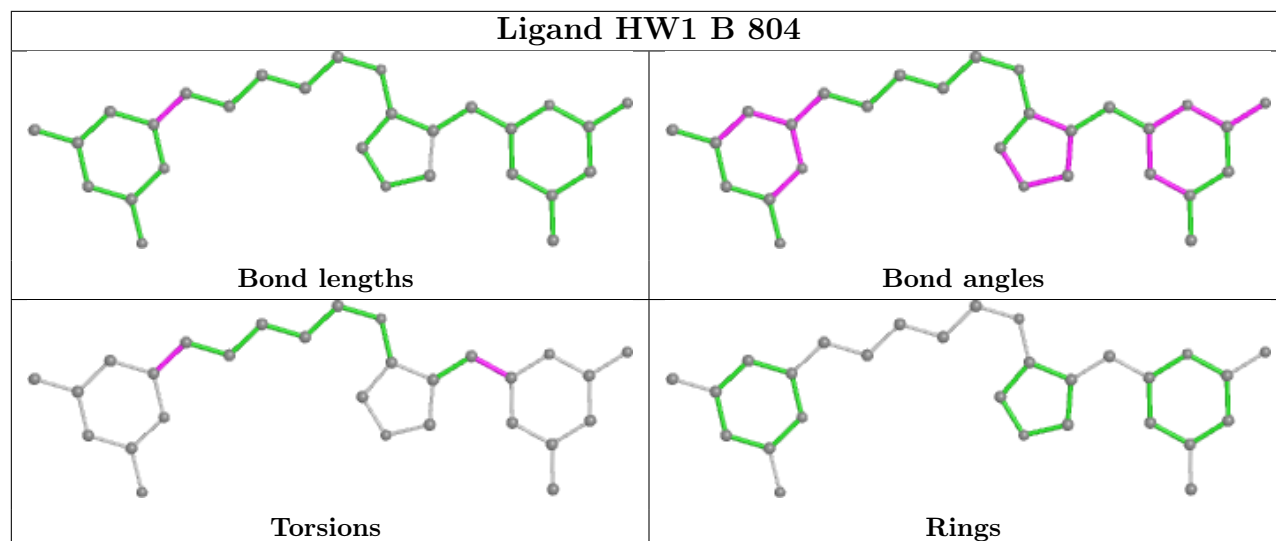
Mol	Chain	Res	Type	Atoms
4	A	803	HW1	C05-C06-C08-C3'
4	A	803	HW1	N01-C06-C08-C3'
4	B	804	HW1	C05-C06-C08-C3'
4	B	804	HW1	N01-C06-C08-C3'
4	A	803	HW1	C11-C12-C13-C14
4	A	803	HW1	C10-C11-C12-C13
2	A	801	HEM	C2A-CAA-CBA-CGA
4	A	803	HW1	C12-C13-C14-C26
4	B	804	HW1	C13-C14-C26-N21

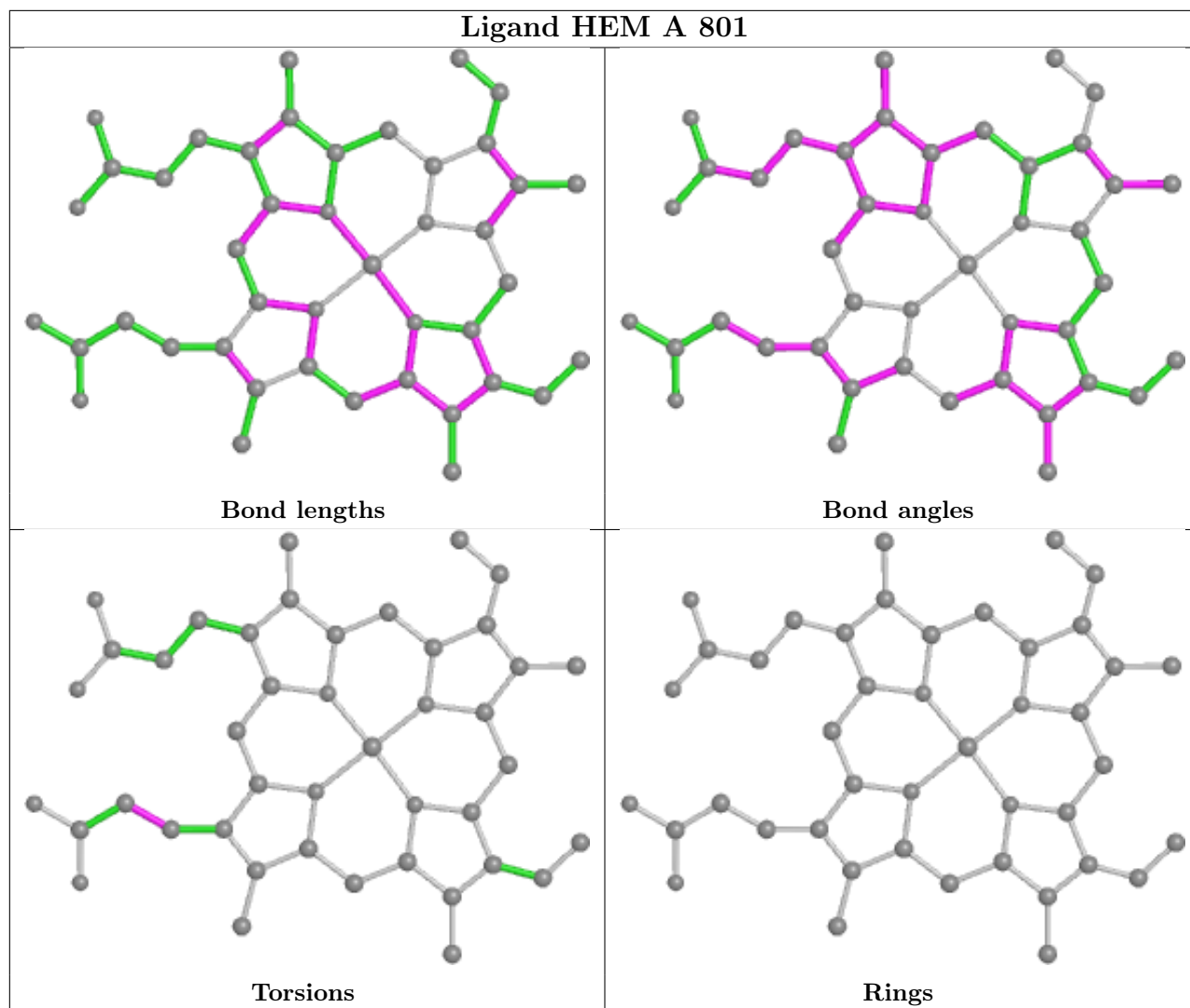
There are no ring outliers.

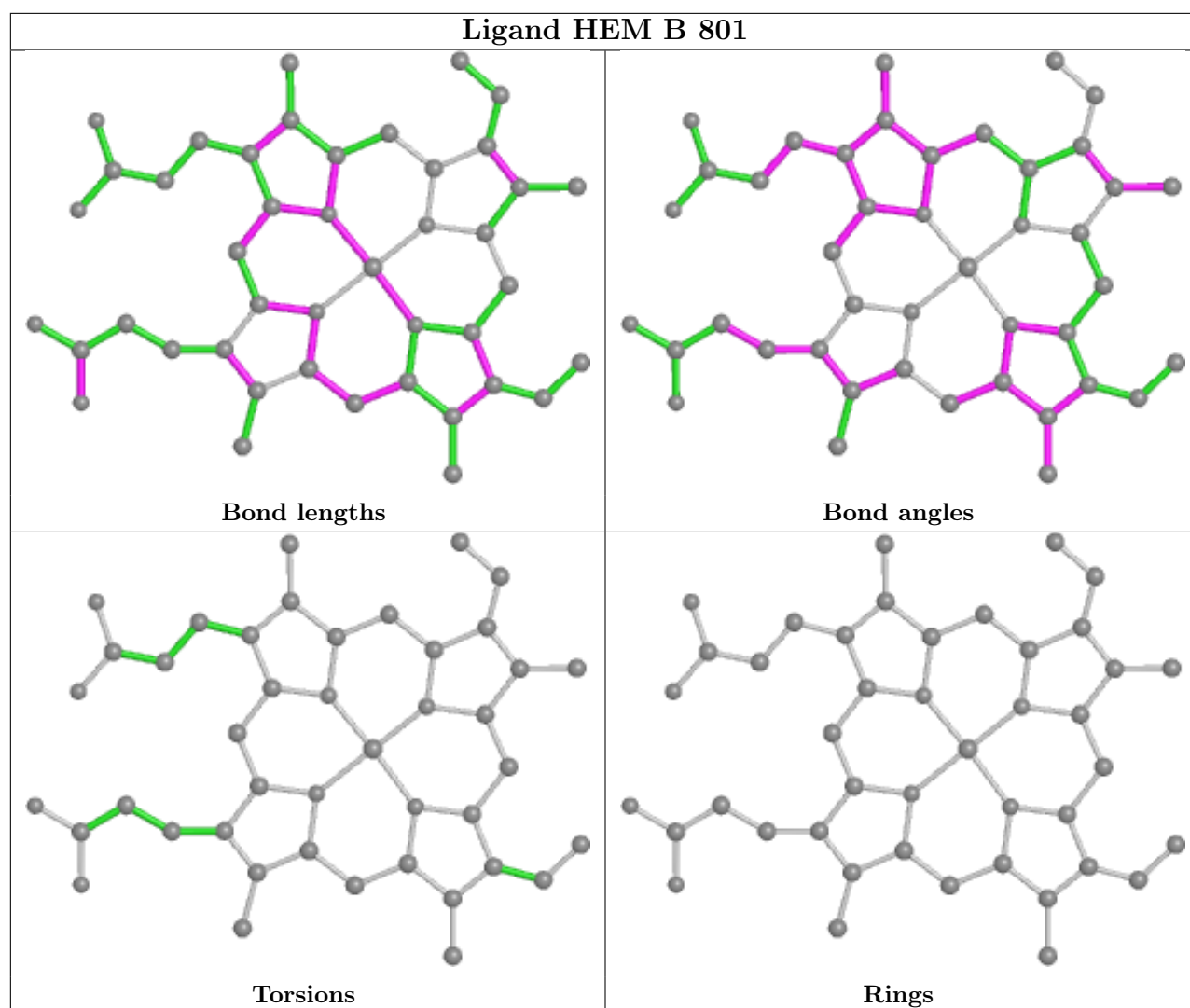
4 monomers are involved in 16 short contacts:

Mol	Chain	Res	Type	Clashes	Symm-Clashes
4	B	804	HW1	7	0
4	A	803	HW1	7	0
2	A	801	HEM	5	0
2	B	801	HEM	2	0

The following is a two-dimensional graphical depiction of Mogul quality analysis of bond lengths, bond angles, torsion angles, and ring geometry for all instances of the Ligand of Interest. In addition, ligands with molecular weight > 250 and outliers as shown on the validation Tables will also be included. For torsion angles, if less than 5% of the Mogul distribution of torsion angles is within 10 degrees of the torsion angle in question, then that torsion angle is considered an outlier. Any bond that is central to one or more torsion angles identified as an outlier by Mogul will be highlighted in the graph. For rings, the root-mean-square deviation (RMSD) between the ring in question and similar rings identified by Mogul is calculated over all ring torsion angles. If the average RMSD is greater than 60 degrees and the minimal RMSD between the ring in question and any Mogul-identified rings is also greater than 60 degrees, then that ring is considered an outlier. The outliers are highlighted in purple. The color gray indicates Mogul did not find sufficient equivalents in the CSD to analyse the geometry.







5.7 Other polymers [i](#)

There are no such residues in this entry.

5.8 Polymer linkage issues [i](#)

There are no chain breaks in this entry.

6 Fit of model and data

6.1 Protein, DNA and RNA chains

In the following table, the column labelled ‘#RSRZ > 2’ contains the number (and percentage) of RSRZ outliers, followed by percent RSRZ outliers for the chain as percentile scores relative to all X-ray entries and entries of similar resolution. The OWAB column contains the minimum, median, 95th percentile and maximum values of the occupancy-weighted average B-factor per residue. The column labelled ‘Q < 0.9’ lists the number of (and percentage) of residues with an average occupancy less than 0.9.

Mol	Chain	Analysed	<RSRZ>	#RSRZ>2	OWAB(Å ²)	Q<0.9
1	A	407/422 (96%)	0.41	40 (9%) 7 10	28, 53, 93, 121	0
1	B	411/422 (97%)	0.09	13 (3%) 47 55	29, 43, 70, 93	0
All	All	818/844 (96%)	0.25	53 (6%) 18 23	28, 48, 87, 121	0

All (53) RSRZ outliers are listed below:

Mol	Chain	Res	Type	RSRZ
1	B	300	PHE	6.1
1	A	488	PRO	5.7
1	A	355	PHE	4.8
1	A	715	VAL	4.8
1	A	716	TRP	4.6
1	A	713	THR	4.3
1	B	348	VAL	4.0
1	B	718	GLY	3.9
1	B	350	THR	3.7
1	A	493	LEU	3.7
1	A	381	LEU	3.6
1	A	352	ASP	3.6
1	B	351	LYS	3.5
1	A	386	LYS	3.5
1	A	486	LYS	3.4
1	A	714	HIS	3.2
1	A	507	GLN	3.1
1	A	351	LYS	3.1
1	A	300	PHE	2.9
1	A	506	ILE	2.8
1	A	677	VAL	2.8
1	A	554	PHE	2.7
1	A	389	GLU	2.7
1	A	510	TRP	2.6

Continued on next page...

Continued from previous page...

Mol	Chain	Res	Type	RSRZ
1	A	370	LYS	2.6
1	A	511	LYS	2.6
1	B	680	VAL	2.6
1	B	355	PHE	2.6
1	A	485	TYR	2.5
1	A	503	GLU	2.5
1	A	712	ASN	2.5
1	A	321	THR	2.4
1	B	619	ARG	2.4
1	A	299	ARG	2.4
1	A	710	PRO	2.4
1	A	508	GLN	2.4
1	A	552	ASP	2.3
1	A	385	ASN	2.3
1	A	390	SER	2.3
1	A	372	PHE	2.3
1	A	490	GLY	2.3
1	A	491	SER	2.3
1	B	353	GLN	2.3
1	B	677	VAL	2.2
1	A	492	THR	2.2
1	B	611	ALA	2.2
1	A	384	VAL	2.1
1	A	499	VAL	2.1
1	A	551	PHE	2.1
1	B	352	ASP	2.1
1	B	321	THR	2.1
1	A	514	ARG	2.0
1	A	619	ARG	2.0

6.2 Non-standard residues in protein, DNA, RNA chains [i](#)

There are no non-standard protein/DNA/RNA residues in this entry.

6.3 Carbohydrates [i](#)

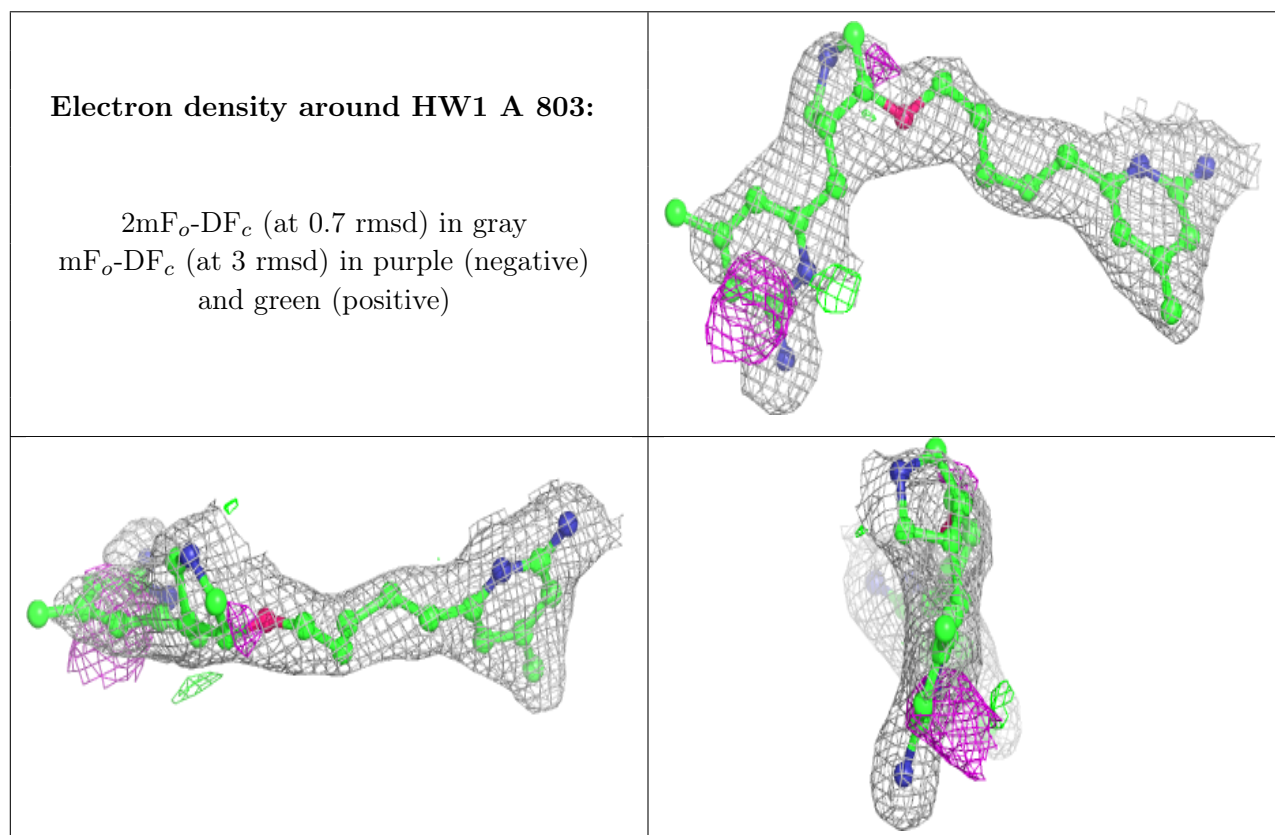
There are no monosaccharides in this entry.

6.4 Ligands [i](#)

In the following table, the Atoms column lists the number of modelled atoms in the group and the number defined in the chemical component dictionary. The B-factors column lists the minimum, median, 95th percentile and maximum values of B factors of atoms in the group. The column labelled 'Q< 0.9' lists the number of atoms with occupancy less than 0.9.

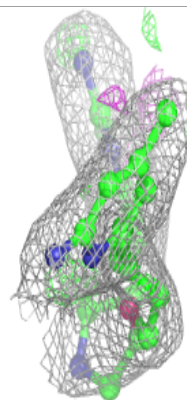
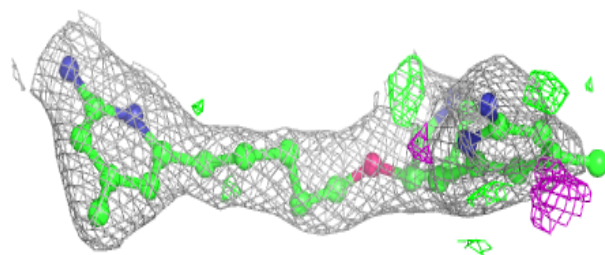
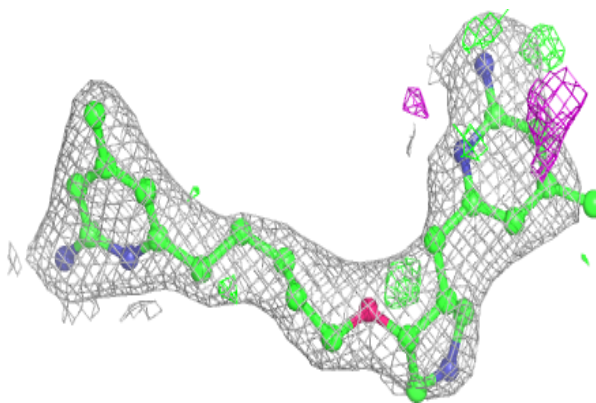
Mol	Type	Chain	Res	Atoms	RSCC	RSR	B-factors(\AA^2)	Q<0.9
4	HW1	A	803	28/28	0.86	0.23	32,52,67,69	0
4	HW1	B	804	28/28	0.91	0.24	35,48,61,70	0
5	ACT	B	803	4/4	0.95	0.14	49,49,50,53	0
2	HEM	A	801	43/43	0.97	0.17	32,35,44,47	0
3	H4B	A	802	17/17	0.97	0.16	34,36,41,42	0
5	ACT	A	804	4/4	0.97	0.15	56,63,67,67	0
3	H4B	B	802	17/17	0.97	0.18	32,34,39,40	0
2	HEM	B	801	43/43	0.98	0.21	29,33,39,44	0
6	ZN	A	805	1/1	0.99	0.09	40,40,40,40	0

The following is a graphical depiction of the model fit to experimental electron density of all instances of the Ligand of Interest. In addition, ligands with molecular weight > 250 and outliers as shown on the geometry validation Tables will also be included. Each fit is shown from different orientation to approximate a three-dimensional view.



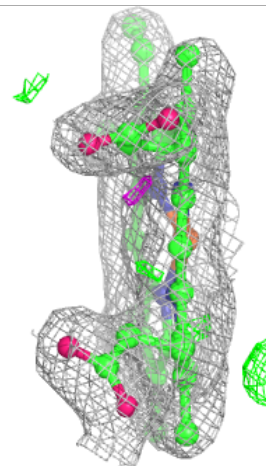
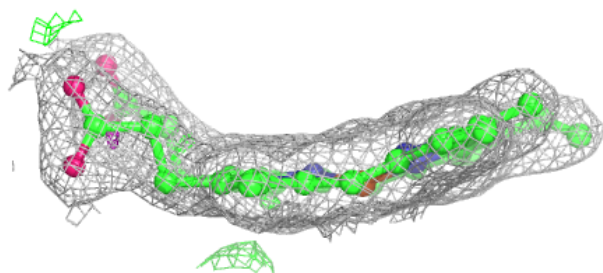
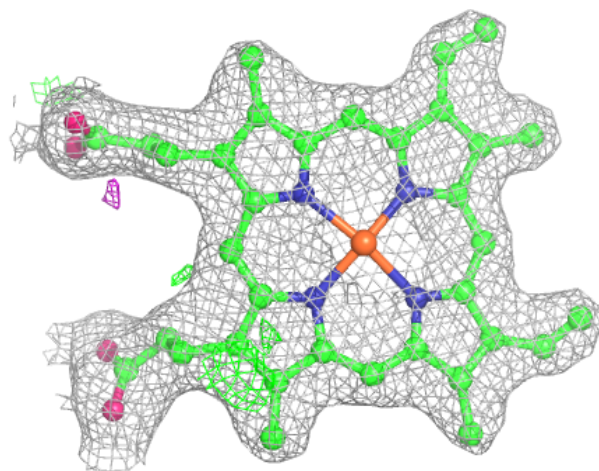
Electron density around HW1 B 804:

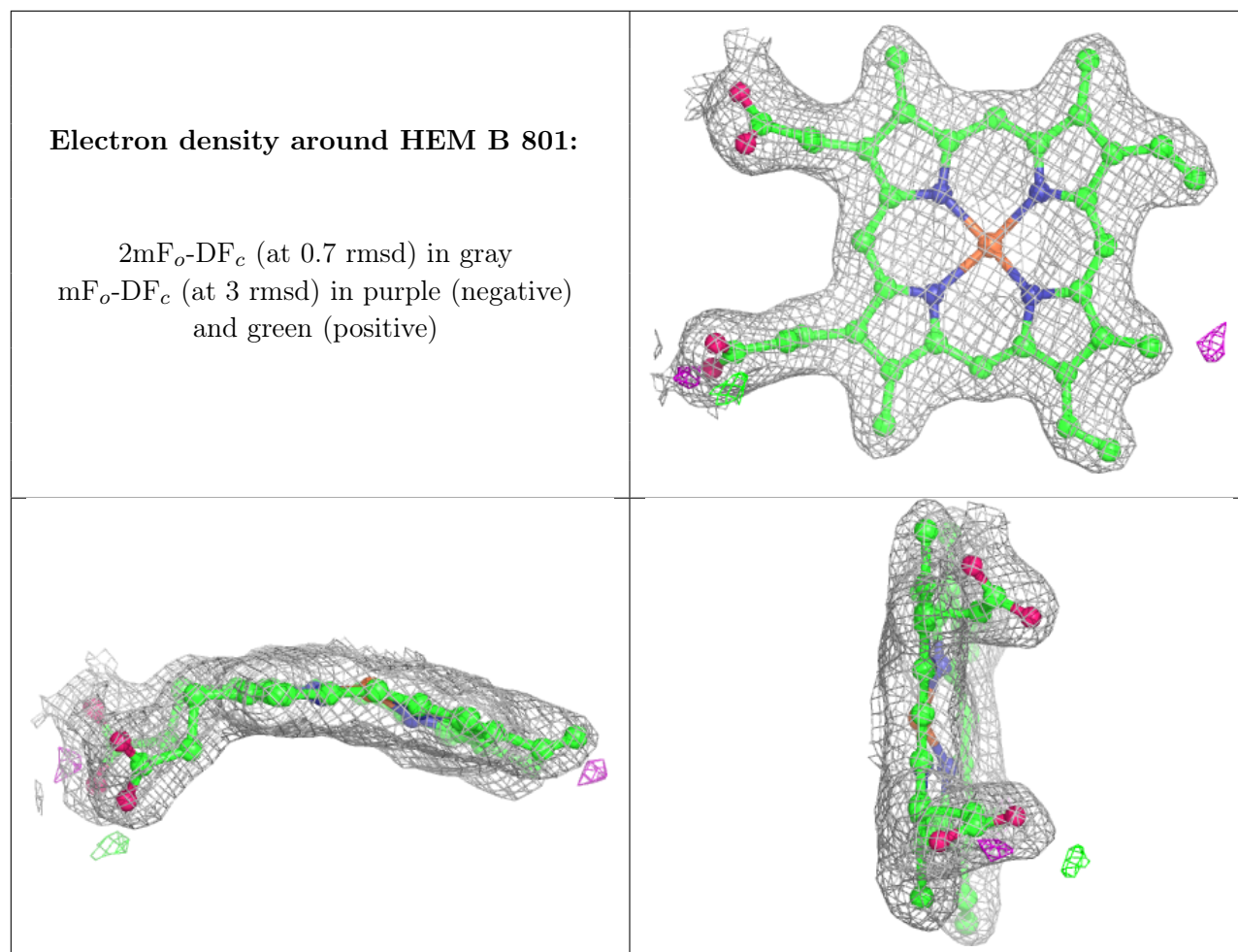
$2mF_o-DF_c$ (at 0.7 rmsd) in gray
 mF_o-DF_c (at 3 rmsd) in purple (negative)
and green (positive)



Electron density around HEM A 801:

$2mF_o-DF_c$ (at 0.7 rmsd) in gray
 mF_o-DF_c (at 3 rmsd) in purple (negative)
and green (positive)





6.5 Other polymers [i](#)

There are no such residues in this entry.