



Full wwPDB X-ray Structure Validation Report ⓘ

Apr 17, 2019 – 03:26 PM EDT

PDB ID : 4CDE
Title : Human DPP1 in complex with 4-amino-N-((1S)-1-cyano-2-(4-(4-cyanophenyl)phenyl)ethyl)tetrahydropyran-4-carboxamide
Authors : Debreczeni, J.; Edman, K.; Furber, M.; Tiden, A.; Gardiner, P.; Mete, T.; Ford, R.; Millichip, I.; Stein, L.; Mather, A.; Kinchin, E.; Luckhurst, C.; Cage, P.; Sanghane, H.; Breed, J.; Wissler, L.
Deposited on : 2013-10-31
Resolution : 2.40 Å (reported)

This is a Full wwPDB X-ray Structure Validation Report for a publicly released PDB entry.

We welcome your comments at validation@mail.wwpdb.org

A user guide is available at

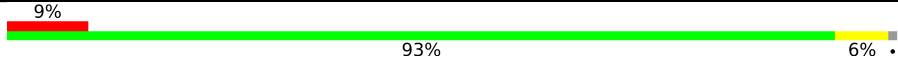
<https://www.wwpdb.org/validation/2017/XrayValidationReportHelp>

with specific help available everywhere you see the ⓘ symbol.

The following versions of software and data (see [references ⓘ](#)) were used in the production of this report:

MolProbity : 4.02b-467
Mogul : 1.8.0 (224370), CSD as540be (2019)
Xtriage (Phenix) : 1.13
EDS : rb-20031633
Percentile statistics : 20171227.v01 (using entries in the PDB archive December 27th 2017)
Refmac : 5.8.0158
CCP4 : 7.0 (Gargrove)
Ideal geometry (proteins) : Engh & Huber (2001)
Ideal geometry (DNA, RNA) : Parkinson et al. (1996)
Validation Pipeline (wwPDB-VP) : rb-20031633

Continued from previous page...

Mol	Chain	Length	Quality of chain
3	F	69	 <p>A horizontal bar chart representing the quality of chain. The bar is divided into three segments: a red segment on the left labeled '9%', a large green segment in the middle labeled '93%', and a yellow segment on the right labeled '6%'. A small grey dot is visible at the end of the yellow segment.</p>

2 Entry composition [i](#)

There are 7 unique types of molecules in this entry. The entry contains 5761 atoms, of which 0 are hydrogens and 0 are deuteriums.

In the tables below, the ZeroOcc column contains the number of atoms modelled with zero occupancy, the AltConf column contains the number of residues with at least one atom in alternate conformation and the Trace column contains the number of residues modelled with at most 2 atoms.

- Molecule 1 is a protein called DIPEPTIDYL PEPTIDASE 1 EXCLUSION DOMAIN CHAIN.

Mol	Chain	Residues	Atoms					ZeroOcc	AltConf	Trace
			Total	C	N	O	S			
1	A	118	Total 946	C 608	N 153	O 179	S 6	0	0	0
1	D	114	Total 930	C 602	N 150	O 172	S 6	0	1	0

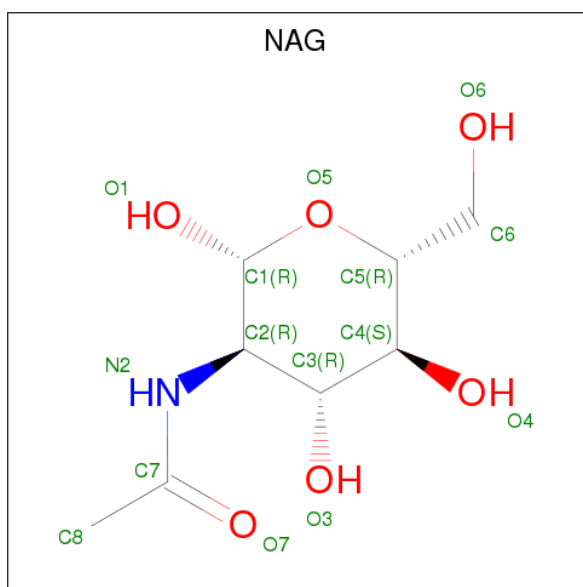
- Molecule 2 is a protein called DIPEPTIDYL PEPTIDASE 1 HEAVY CHAIN.

Mol	Chain	Residues	Atoms					ZeroOcc	AltConf	Trace
			Total	C	N	O	S			
2	B	161	Total 1288	C 822	N 216	O 237	S 13	0	1	0
2	E	161	Total 1285	C 820	N 214	O 238	S 13	0	1	0

- Molecule 3 is a protein called DIPEPTIDYL PEPTIDASE 1 LIGHT CHAIN.

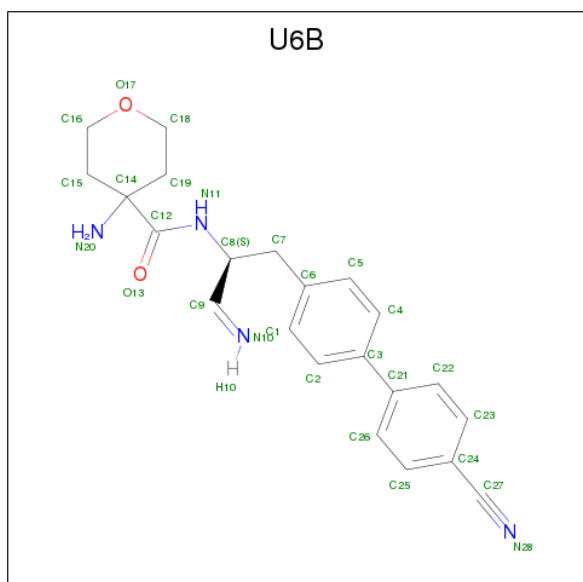
Mol	Chain	Residues	Atoms					ZeroOcc	AltConf	Trace
			Total	C	N	O	S			
3	C	68	Total 528	C 339	N 88	O 99	S 2	0	0	0
3	F	68	Total 528	C 339	N 88	O 99	S 2	0	0	0

- Molecule 4 is N-ACETYL-D-GLUCOSAMINE (three-letter code: NAG) (formula: C₈H₁₅NO₆).



Mol	Chain	Residues	Atoms				ZeroOcc	AltConf
			Total	C	N	O		
4	A	1	Total	C	N	O	0	0
			14	8	1	5		
4	B	1	Total	C	N	O	0	0
			14	8	1	5		
4	D	1	Total	C	N	O	0	0
			14	8	1	5		
4	E	1	Total	C	N	O	0	0
			14	8	1	5		

- Molecule 5 is 4-AZANYL-N-[(2S)-1-AZANYLIDENE-3-[4-(4-CYANOPHENYL)PHE
NYL]PROPAN-2-YL]OXANE-4-CARBOXAMIDE (three-letter code: U6B) (formula:
 $C_{22}H_{24}N_4O_2$).



Mol	Chain	Residues	Atoms				ZeroOcc	AltConf
5	B	1	Total	C	N	O	0	0
			28	22	4	2		
5	F	1	Total	C	N	O	0	0
			28	22	4	2		

- Molecule 6 is CHLORIDE ION (three-letter code: CL) (formula: Cl).

Mol	Chain	Residues	Atoms		ZeroOcc	AltConf
6	B	1	Total	Cl	0	0
			1	1		
6	E	1	Total	Cl	0	0
			1	1		

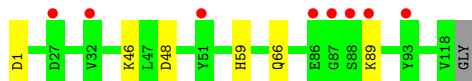
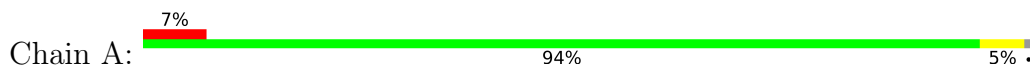
- Molecule 7 is water.

Mol	Chain	Residues	Atoms		ZeroOcc	AltConf
7	A	36	Total	O	0	0
			36	36		
7	B	38	Total	O	0	0
			38	38		
7	C	14	Total	O	0	0
			14	14		
7	D	25	Total	O	0	0
			25	25		
7	E	23	Total	O	0	0
			23	23		
7	F	6	Total	O	0	0
			6	6		

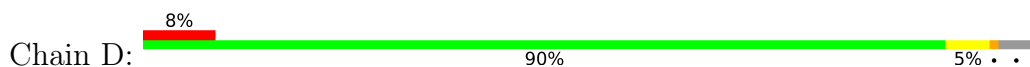
3 Residue-property plots [i](#)

These plots are drawn for all protein, RNA and DNA chains in the entry. The first graphic for a chain summarises the proportions of the various outlier classes displayed in the second graphic. The second graphic shows the sequence view annotated by issues in geometry and electron density. Residues are color-coded according to the number of geometric quality criteria for which they contain at least one outlier: green = 0, yellow = 1, orange = 2 and red = 3 or more. A red dot above a residue indicates a poor fit to the electron density ($RSRZ > 2$). Stretches of 2 or more consecutive residues without any outlier are shown as a green connector. Residues present in the sample, but not in the model, are shown in grey.

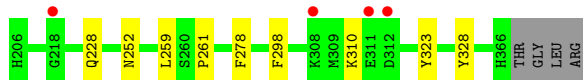
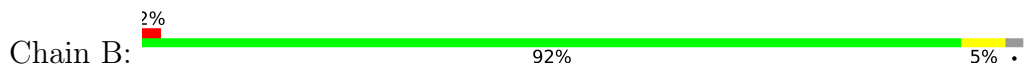
- Molecule 1: DIPEPTIDYL PEPTIDASE 1 EXCLUSION DOMAIN CHAIN



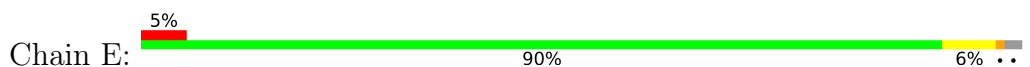
- Molecule 1: DIPEPTIDYL PEPTIDASE 1 EXCLUSION DOMAIN CHAIN



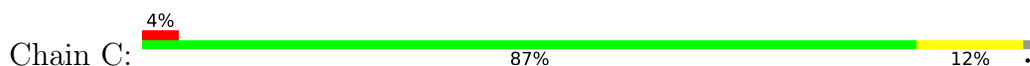
- Molecule 2: DIPEPTIDYL PEPTIDASE 1 HEAVY CHAIN



- Molecule 2: DIPEPTIDYL PEPTIDASE 1 HEAVY CHAIN

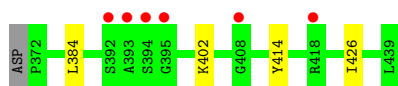


- Molecule 3: DIPEPTIDYL PEPTIDASE 1 LIGHT CHAIN



- Molecule 3: DIPEPTIDYL PEPTIDASE 1 LIGHT CHAIN





4 Data and refinement statistics i

Property	Value	Source
Space group	P 31 2 1	Depositor
Cell constants a, b, c, α , β , γ	84.35Å 84.35Å 224.94Å 90.00° 90.00° 120.00°	Depositor
Resolution (Å)	20.00 – 2.40 19.94 – 2.40	Depositor EDS
% Data completeness (in resolution range)	99.7 (20.00-2.40) 99.8 (19.94-2.40)	Depositor EDS
R_{merge}	0.07	Depositor
R_{sym}	(Not available)	Depositor
$\langle I/\sigma(I) \rangle$ ¹	3.43 (at 2.41Å)	Xtrriage
Refinement program	REFMAC 5.7.0032	Depositor
R, R_{free}	0.194 , 0.242 0.203 , 0.245	Depositor DCC
R_{free} test set	1851 reflections (5.00%)	wwPDB-VP
Wilson B-factor (Å ²)	52.9	Xtrriage
Anisotropy	0.042	Xtrriage
Bulk solvent k_{sol} (e/Å ³), B_{sol} (Å ²)	0.33 , 45.5	EDS
L-test for twinning ²	$\langle L \rangle = 0.47$, $\langle L^2 \rangle = 0.30$	Xtrriage
Estimated twinning fraction	0.035 for -h,-k,l	Xtrriage
F_o, F_c correlation	0.95	EDS
Total number of atoms	5761	wwPDB-VP
Average B, all atoms (Å ²)	67.0	wwPDB-VP

Xtrriage's analysis on translational NCS is as follows: *The largest off-origin peak in the Patterson function is 3.36% of the height of the origin peak. No significant pseudotranslation is detected.*

¹Intensities estimated from amplitudes.

²Theoretical values of $\langle |L| \rangle$, $\langle L^2 \rangle$ for acentric reflections are 0.5, 0.333 respectively for untwinned datasets, and 0.375, 0.2 for perfectly twinned datasets.

5 Model quality [i](#)

5.1 Standard geometry [i](#)

Bond lengths and bond angles in the following residue types are not validated in this section: U6B, NAG, CL

The Z score for a bond length (or angle) is the number of standard deviations the observed value is removed from the expected value. A bond length (or angle) with $|Z| > 5$ is considered an outlier worth inspection. RMSZ is the root-mean-square of all Z scores of the bond lengths (or angles).

Mol	Chain	Bond lengths		Bond angles	
		RMSZ	# Z >5	RMSZ	# Z >5
1	A	0.50	0/971	0.65	0/1317
1	D	0.45	0/955	0.64	0/1295
2	B	0.46	0/1329	0.61	0/1800
2	E	0.44	0/1325	0.56	0/1795
3	C	0.45	0/544	0.62	0/740
3	F	0.41	0/544	0.59	0/740
All	All	0.46	0/5668	0.61	0/7687

There are no bond length outliers.

There are no bond angle outliers.

There are no chirality outliers.

There are no planarity outliers.

5.2 Too-close contacts [i](#)

In the following table, the Non-H and H(model) columns list the number of non-hydrogen atoms and hydrogen atoms in the chain respectively. The H(added) column lists the number of hydrogen atoms added and optimized by MolProbity. The Clashes column lists the number of clashes within the asymmetric unit, whereas Symm-Clashes lists symmetry related clashes.

Mol	Chain	Non-H	H(model)	H(added)	Clashes	Symm-Clashes
1	A	946	0	898	2	0
1	D	930	0	885	2	0
2	B	1288	0	1190	6	0
2	E	1285	0	1190	8	0
3	C	528	0	502	6	0
3	F	528	0	502	3	0
4	A	14	0	13	0	0

Continued on next page...

Continued from previous page...

Mol	Chain	Non-H	H(model)	H(added)	Clashes	Symm-Clashes
4	B	14	0	13	0	0
4	D	14	0	13	0	0
4	E	14	0	13	0	0
5	B	28	0	22	0	0
5	F	28	0	22	0	0
6	B	1	0	0	0	0
6	E	1	0	0	0	0
7	A	36	0	0	0	0
7	B	38	0	0	0	0
7	C	14	0	0	1	0
7	D	25	0	0	0	0
7	E	23	0	0	0	0
7	F	6	0	0	0	0
All	All	5761	0	5263	20	0

The all-atom clashscore is defined as the number of clashes found per 1000 atoms (including hydrogen atoms). The all-atom clashscore for this structure is 2.

All (20) close contacts within the same asymmetric unit are listed below, sorted by their clash magnitude.

Atom-1	Atom-2	Interatomic distance (Å)	Clash overlap (Å)
2:E:293:VAL:HG13	2:E:297:CYS:HB3	1.86	0.57
2:E:304:ASP:O	2:E:304:ASP:CG	2.48	0.52
1:A:66:GLN:HG3	2:B:278:PHE:CE1	2.45	0.51
3:C:396:MET:HE3	7:C:2007:HOH:O	2.11	0.51
2:E:293:VAL:CG1	2:E:297:CYS:HB3	2.43	0.49
3:F:384:LEU:HB3	3:F:402:LYS:HB3	1.95	0.48
2:E:214:ARG:HD3	3:F:414:TYR:CZ	2.49	0.48
2:B:252:ASN:HB2	1:D:54:LEU:HD21	1.99	0.45
3:C:385:LEU:HD11	3:C:399:TRP:CE3	2.51	0.45
1:A:48:ASP:O	1:A:59:HIS:HA	2.18	0.43
2:B:323:TYR:CD1	3:C:431:VAL:HG22	2.54	0.43
1:D:43:TYR:HB2	1:D:51[B]:TYR:CE1	2.54	0.42
2:E:248[B]:ARG:HD3	2:E:253:ASN:OD1	2.20	0.41
2:B:259:LEU:O	2:B:261:PRO:HD3	2.21	0.41
3:C:422:ASP:OD1	3:C:425:ALA:HA	2.20	0.41
2:E:350:PHE:CE2	2:E:352:VAL:HG12	2.55	0.41
2:E:349:ALA:O	3:F:426:ILE:HA	2.19	0.41
2:E:242:MET:SD	2:E:346:MET:HA	2.61	0.41
2:B:228:GLN:OE1	3:C:404:SER:OG	2.38	0.40
2:B:328:TYR:CE1	3:C:429:ILE:HD12	2.56	0.40

There are no symmetry-related clashes.

5.3 Torsion angles [i](#)

5.3.1 Protein backbone [i](#)

In the following table, the Percentiles column shows the percent Ramachandran outliers of the chain as a percentile score with respect to all X-ray entries followed by that with respect to entries of similar resolution.

The Analysed column shows the number of residues for which the backbone conformation was analysed, and the total number of residues.

Mol	Chain	Analysed	Favoured	Allowed	Outliers	Percentiles	
1	A	116/119 (98%)	108 (93%)	8 (7%)	0	100	100
1	D	111/119 (93%)	102 (92%)	7 (6%)	2 (2%)	9	11
2	B	160/165 (97%)	153 (96%)	7 (4%)	0	100	100
2	E	160/165 (97%)	151 (94%)	9 (6%)	0	100	100
3	C	66/69 (96%)	64 (97%)	2 (3%)	0	100	100
3	F	66/69 (96%)	64 (97%)	2 (3%)	0	100	100
All	All	679/706 (96%)	642 (95%)	35 (5%)	2 (0%)	43	58

All (2) Ramachandran outliers are listed below:

Mol	Chain	Res	Type
1	D	32	VAL
1	D	33	MET

5.3.2 Protein sidechains [i](#)

In the following table, the Percentiles column shows the percent sidechain outliers of the chain as a percentile score with respect to all X-ray entries followed by that with respect to entries of similar resolution.

The Analysed column shows the number of residues for which the sidechain conformation was analysed, and the total number of residues.

Mol	Chain	Analysed	Rotameric	Outliers	Percentiles	
1	A	103/103 (100%)	100 (97%)	3 (3%)	45	66
1	D	101/103 (98%)	98 (97%)	3 (3%)	44	65
2	B	137/139 (99%)	135 (98%)	2 (2%)	67	83

Continued on next page...

Continued from previous page...

Mol	Chain	Analysed	Rotameric	Outliers	Percentiles	
2	E	137/139 (99%)	134 (98%)	3 (2%)	55	74
3	C	54/55 (98%)	54 (100%)	0	100	100
3	F	54/55 (98%)	54 (100%)	0	100	100
All	All	586/594 (99%)	575 (98%)	11 (2%)	60	78

All (11) residues with a non-rotameric sidechain are listed below:

Mol	Chain	Res	Type
1	A	1	ASP
1	A	46	LYS
1	A	89	LYS
2	B	298	PHE
2	B	310	LYS
1	D	26	ARG
1	D	33	MET
1	D	46	LYS
2	E	293	VAL
2	E	298	PHE
2	E	304	ASP

Some sidechains can be flipped to improve hydrogen bonding and reduce clashes. All (1) such sidechains are listed below:

Mol	Chain	Res	Type
1	D	18	GLN

5.3.3 RNA [i](#)

There are no RNA molecules in this entry.

5.4 Non-standard residues in protein, DNA, RNA chains [i](#)

There are no non-standard protein/DNA/RNA residues in this entry.

5.5 Carbohydrates [i](#)

There are no carbohydrates in this entry.

5.6 Ligand geometry

Of 8 ligands modelled in this entry, 2 are monoatomic - leaving 6 for Mogul analysis.

In the following table, the Counts columns list the number of bonds (or angles) for which Mogul statistics could be retrieved, the number of bonds (or angles) that are observed in the model and the number of bonds (or angles) that are defined in the Chemical Component Dictionary. The Link column lists molecule types, if any, to which the group is linked. The Z score for a bond length (or angle) is the number of standard deviations the observed value is removed from the expected value. A bond length (or angle) with $|Z| > 2$ is considered an outlier worth inspection. RMSZ is the root-mean-square of all Z scores of the bond lengths (or angles).

Mol	Type	Chain	Res	Link	Bond lengths			Bond angles		
					Counts	RMSZ	# Z > 2	Counts	RMSZ	# Z > 2
4	NAG	A	1119	1	14,14,15	0.46	0	17,19,21	2.40	7 (41%)
4	NAG	B	1367	2	14,14,15	0.48	0	17,19,21	1.27	1 (5%)
5	U6B	B	1368	2	26,30,30	0.76	1 (3%)	34,41,41	0.91	2 (5%)
4	NAG	D	1119	1	14,14,15	0.54	0	17,19,21	1.53	1 (5%)
4	NAG	E	1368	2	14,14,15	0.54	0	17,19,21	1.77	4 (23%)
5	U6B	F	1440	2	26,30,30	0.68	1 (3%)	34,41,41	0.91	3 (8%)

In the following table, the Chirals column lists the number of chiral outliers, the number of chiral centers analysed, the number of these observed in the model and the number defined in the Chemical Component Dictionary. Similar counts are reported in the Torsion and Rings columns. '-' means no outliers of that kind were identified.

Mol	Type	Chain	Res	Link	Chirals	Torsions	Rings
4	NAG	A	1119	1	-	0/6/23/26	0/1/1/1
4	NAG	B	1367	2	-	0/6/23/26	0/1/1/1
5	U6B	B	1368	2	-	0/18/32/32	0/3/3/3
4	NAG	D	1119	1	-	0/6/23/26	0/1/1/1
4	NAG	E	1368	2	-	0/6/23/26	0/1/1/1
5	U6B	F	1440	2	-	0/18/32/32	0/3/3/3

All (2) bond length outliers are listed below:

Mol	Chain	Res	Type	Atoms	Z	Observed(Å)	Ideal(Å)
5	B	1368	U6B	C15-C14	-2.74	1.51	1.54
5	F	1440	U6B	C15-C14	-2.23	1.51	1.54

All (18) bond angle outliers are listed below:

Mol	Chain	Res	Type	Atoms	Z	Observed(°)	Ideal(°)
4	A	1119	NAG	C4-C3-C2	-4.64	104.22	111.02

Continued on next page...

Continued from previous page...

Mol	Chain	Res	Type	Atoms	Z	Observed(°)	Ideal(°)
4	E	1368	NAG	O5-C1-C2	-2.66	107.17	111.36
5	B	1368	U6B	C6-C7-C8	-2.53	110.11	113.71
4	A	1119	NAG	O7-C7-C8	-2.46	117.71	122.07
5	B	1368	U6B	C9-C8-N11	-2.34	106.24	110.54
4	A	1119	NAG	O5-C1-C2	-2.29	107.76	111.36
5	F	1440	U6B	C6-C7-C8	-2.20	110.58	113.71
5	F	1440	U6B	O17-C16-C15	-2.12	109.27	111.61
5	F	1440	U6B	O17-C18-C19	2.31	114.15	111.61
4	E	1368	NAG	C4-C3-C2	2.48	114.65	111.02
4	A	1119	NAG	O5-C5-C4	2.50	116.91	110.83
4	A	1119	NAG	C1-C2-N2	3.04	115.68	110.49
4	A	1119	NAG	C8-C7-N2	3.27	121.73	116.10
4	E	1368	NAG	C3-C4-C5	3.32	116.20	110.23
4	B	1367	NAG	C1-O5-C5	3.56	117.04	112.20
4	E	1368	NAG	C1-O5-C5	4.27	118.00	112.20
4	D	1119	NAG	C1-O5-C5	4.61	118.47	112.20
4	A	1119	NAG	C1-O5-C5	5.43	119.58	112.20

There are no chirality outliers.

There are no torsion outliers.

There are no ring outliers.

No monomer is involved in short contacts.

5.7 Other polymers [i](#)

There are no such residues in this entry.

5.8 Polymer linkage issues [i](#)

There are no chain breaks in this entry.

6 Fit of model and data

6.1 Protein, DNA and RNA chains

In the following table, the column labelled ‘#RSRZ> 2’ contains the number (and percentage) of RSRZ outliers, followed by percent RSRZ outliers for the chain as percentile scores relative to all X-ray entries and entries of similar resolution. The OWAB column contains the minimum, median, 95th percentile and maximum values of the occupancy-weighted average B-factor per residue. The column labelled ‘Q< 0.9’ lists the number of (and percentage) of residues with an average occupancy less than 0.9.

Mol	Chain	Analysed	<RSRZ>	#RSRZ>2	OWAB(Å ²)	Q<0.9
1	A	118/119 (99%)	0.03	8 (6%) 17 15	37, 59, 100, 135	0
1	D	114/119 (95%)	0.33	9 (7%) 12 11	41, 68, 118, 147	0
2	B	161/165 (97%)	-0.25	4 (2%) 57 55	36, 59, 89, 109	0
2	E	161/165 (97%)	0.01	9 (5%) 24 23	38, 72, 112, 126	0
3	C	68/69 (98%)	-0.12	3 (4%) 34 32	39, 59, 84, 107	0
3	F	68/69 (98%)	0.24	6 (8%) 10 9	43, 70, 107, 122	0
All	All	690/706 (97%)	0.01	39 (5%) 24 22	36, 64, 108, 147	0

All (39) RSRZ outliers are listed below:

Mol	Chain	Res	Type	RSRZ
1	D	32	VAL	8.1
3	F	393	ALA	7.2
1	A	86	GLU	5.1
2	E	312	ASP	4.8
2	E	311	GLU	4.3
2	B	311	GLU	4.0
1	A	88	SER	3.8
1	A	89	LYS	3.8
1	D	93	TYR	3.8
2	E	308	LYS	3.8
2	B	308	LYS	3.7
1	D	89	LYS	3.6
2	E	217	HIS	3.5
1	A	87	GLY	3.5
3	F	392	SER	3.3
2	E	313	CYS	3.3
1	A	32	VAL	3.3
3	C	393	ALA	3.2
2	B	218	GLY	3.2

Continued on next page...

Continued from previous page...

Mol	Chain	Res	Type	RSRZ
1	D	90	VAL	3.2
3	C	395	GLY	2.8
2	E	360	LYS	2.8
3	C	392	SER	2.7
1	D	29	ASN	2.6
2	E	307	CYS	2.5
1	D	21	SER	2.4
1	D	84	LYS	2.4
2	E	367	THR	2.4
1	D	35	PRO	2.3
2	E	362	GLY	2.3
1	A	27	ASP	2.3
1	D	33	MET	2.3
2	B	312	ASP	2.3
1	A	51	TYR	2.3
3	F	394	SER	2.2
3	F	408	GLY	2.2
3	F	395	GLY	2.2
1	A	93	TYR	2.1
3	F	418	ARG	2.0

6.2 Non-standard residues in protein, DNA, RNA chains [i](#)

There are no non-standard protein/DNA/RNA residues in this entry.

6.3 Carbohydrates [i](#)

There are no carbohydrates in this entry.

6.4 Ligands [i](#)

In the following table, the Atoms column lists the number of modelled atoms in the group and the number defined in the chemical component dictionary. The B-factors column lists the minimum, median, 95th percentile and maximum values of B factors of atoms in the group. The column labelled 'Q< 0.9' lists the number of atoms with occupancy less than 0.9.

Mol	Type	Chain	Res	Atoms	RSCC	RSR	B-factors(Å ²)	Q<0.9
4	NAG	A	1119	14/15	0.82	0.26	75,92,103,104	0
4	NAG	B	1367	14/15	0.88	0.25	71,89,99,102	0
4	NAG	E	1368	14/15	0.89	0.23	81,91,100,101	0

Continued on next page...

Continued from previous page...

Mol	Type	Chain	Res	Atoms	RSCC	RSR	B-factors(\AA^2)	Q<0.9
5	U6B	F	1440	28/28	0.90	0.19	62,72,78,81	0
4	NAG	D	1119	14/15	0.91	0.27	89,97,103,106	0
5	U6B	B	1368	28/28	0.93	0.17	53,61,69,72	0
6	CL	B	1369	1/1	0.98	0.07	48,48,48,48	0
6	CL	E	1369	1/1	0.98	0.09	58,58,58,58	0

6.5 Other polymers [i](#)

There are no such residues in this entry.