



Full wwPDB X-ray Structure Validation Report ⓘ

Jun 16, 2024 – 05:49 PM EDT

PDB ID : 3S2K
Title : Structural basis of Wnt signaling inhibition by Dickkopf binding to LRP5/6.
Authors : Ahn, V.E.; Chu, M.L.-H.; Choi, H.-J.; Tran, D.; Abo, A.; Weis, W.I.
Deposited on : 2011-05-16
Resolution : 2.80 Å(reported)

This is a Full wwPDB X-ray Structure Validation Report for a publicly released PDB entry.

We welcome your comments at validation@mail.wwpdb.org

A user guide is available at

<https://www.wwpdb.org/validation/2017/XrayValidationReportHelp>

with specific help available everywhere you see the ⓘ symbol.

The types of validation reports are described at

<http://www.wwpdb.org/validation/2017/FAQs#types>.

The following versions of software and data (see [references ⓘ](#)) were used in the production of this report:

MolProbity : 4.02b-467
Mogul : 2022.3.0, CSD as543be (2022)
Xtrriage (Phenix) : 1.20.1
EDS : 2.37.1
Percentile statistics : 20191225.v01 (using entries in the PDB archive December 25th 2019)
Refmac : 5.8.0158
CCP4 : 7.0.044 (Gargrove)
Ideal geometry (proteins) : Engh & Huber (2001)
Ideal geometry (DNA, RNA) : Parkinson et al. (1996)
Validation Pipeline (wwPDB-VP) : 2.37.1

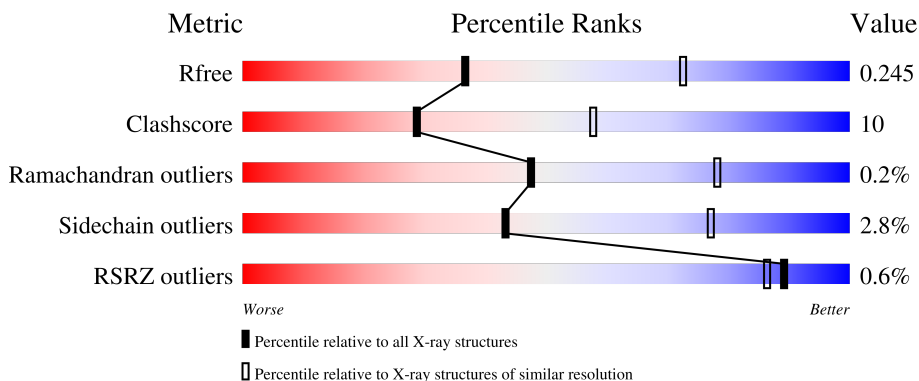
1 Overall quality at a glance

The following experimental techniques were used to determine the structure:

X-RAY DIFFRACTION

The reported resolution of this entry is 2.80 Å.

Percentile scores (ranging between 0-100) for global validation metrics of the entry are shown in the following graphic. The table shows the number of entries on which the scores are based.





Metric	Whole archive (#Entries)	Similar resolution (#Entries, resolution range(Å))
R_{free}	130704	3140 (2.80-2.80)
Clashscore	141614	3569 (2.80-2.80)
Ramachandran outliers	138981	3498 (2.80-2.80)
Sidechain outliers	138945	3500 (2.80-2.80)
RSRZ outliers	127900	3078 (2.80-2.80)

The table below summarises the geometric issues observed across the polymeric chains and their fit to the electron density. The red, orange, yellow and green segments of the lower bar indicate the fraction of residues that contain outliers for ≥ 3 , 2, 1 and 0 types of geometric quality criteria respectively. A grey segment represents the fraction of residues that are not modelled. The numeric value for each fraction is indicated below the corresponding segment, with a dot representing fractions $\leq 5\%$. The upper red bar (where present) indicates the fraction of residues that have poor fit to the electron density. The numeric value is given above the bar.

Mol	Chain	Length	Quality of chain
1	A	629	 72% 23% . .
1	B	629	 75% 21% . .
2	C	97	 62% 15% . 22%
3	D	3	 100%
3	F	3	 100%

Continued on next page...

Continued from previous page...

Mol	Chain	Length	Quality of chain
4	E	2	 50% 50%
4	G	2	 50% 50%

2 Entry composition i

There are 7 unique types of molecules in this entry. The entry contains 10613 atoms, of which 0 are hydrogens and 0 are deuteriums.

In the tables below, the ZeroOcc column contains the number of atoms modelled with zero occupancy, the AltConf column contains the number of residues with at least one atom in alternate conformation and the Trace column contains the number of residues modelled with at most 2 atoms.

- Molecule 1 is a protein called Low-density lipoprotein receptor-related protein 6.

Mol	Chain	Residues	Atoms					ZeroOcc	AltConf	Trace
			Total	C	N	O	S			
1	A	610	4860	3050	860	925	25	0	0	0
1	B	612	4873	3057	862	929	25	0	0	0

There are 26 discrepancies between the modelled and reference sequences:

Chain	Residue	Modelled	Actual	Comment	Reference
A	628	ALA	-	expression tag	UNP O75581
A	629	ASP	-	expression tag	UNP O75581
A	1062	ILE	VAL	SEE REMARK 999	UNP O75581
A	1247	HIS	-	expression tag	UNP O75581
A	1248	HIS	-	expression tag	UNP O75581
A	1249	HIS	-	expression tag	UNP O75581
A	1250	HIS	-	expression tag	UNP O75581
A	1251	HIS	-	expression tag	UNP O75581
A	1252	HIS	-	expression tag	UNP O75581
A	1253	HIS	-	expression tag	UNP O75581
A	1254	HIS	-	expression tag	UNP O75581
A	1255	HIS	-	expression tag	UNP O75581
A	1256	HIS	-	expression tag	UNP O75581
B	628	ALA	-	expression tag	UNP O75581
B	629	ASP	-	expression tag	UNP O75581
B	1062	ILE	VAL	SEE REMARK 999	UNP O75581
B	1247	HIS	-	expression tag	UNP O75581
B	1248	HIS	-	expression tag	UNP O75581
B	1249	HIS	-	expression tag	UNP O75581
B	1250	HIS	-	expression tag	UNP O75581
B	1251	HIS	-	expression tag	UNP O75581
B	1252	HIS	-	expression tag	UNP O75581
B	1253	HIS	-	expression tag	UNP O75581
B	1254	HIS	-	expression tag	UNP O75581
B	1255	HIS	-	expression tag	UNP O75581

Continued on next page...

Continued from previous page...

Chain	Residue	Modelled	Actual	Comment	Reference
B	1256	HIS	-	expression tag	UNP O75581

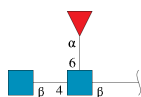
- Molecule 2 is a protein called Dickkopf-related protein 1.

Mol	Chain	Residues	Atoms					ZeroOcc	AltConf	Trace
			Total	C	N	O	S			
2	C	76	596	362	123	101	10	0	0	0

There are 8 discrepancies between the modelled and reference sequences:

Chain	Residue	Modelled	Actual	Comment	Reference
C	175	ALA	-	expression tag	UNP O94907
C	176	ASP	-	expression tag	UNP O94907
C	177	PRO	-	expression tag	UNP O94907
C	267	HIS	-	expression tag	UNP O94907
C	268	HIS	-	expression tag	UNP O94907
C	269	HIS	-	expression tag	UNP O94907
C	270	HIS	-	expression tag	UNP O94907
C	271	HIS	-	expression tag	UNP O94907

- Molecule 3 is an oligosaccharide called 2-acetamido-2-deoxy-beta-D-glucopyranose-(1-4)-[alpha-L-fucopyranose-(1-6)]2-acetamido-2-deoxy-beta-D-glucopyranose.



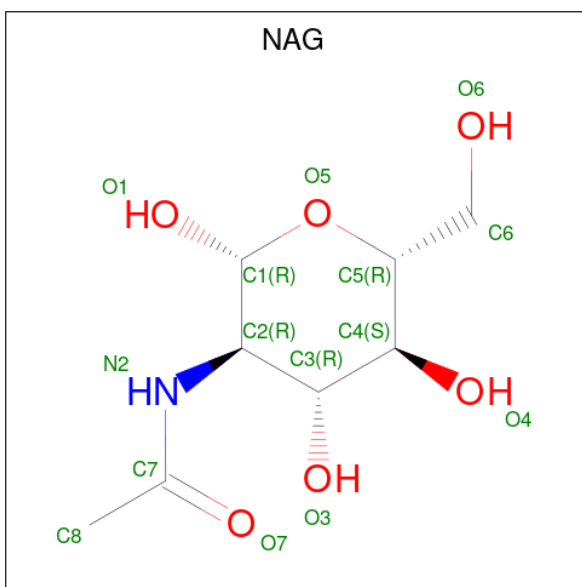
Mol	Chain	Residues	Atoms					ZeroOcc	AltConf	Trace
			Total	C	N	O	S			
3	D	3	38	22	2	14	0	0	0	
3	F	3	38	22	2	14	0	0	0	

- Molecule 4 is an oligosaccharide called 2-acetamido-2-deoxy-beta-D-glucopyranose-(1-4)-2-acetamido-2-deoxy-beta-D-glucopyranose.



Mol	Chain	Residues	Atoms				ZeroOcc	AltConf	Trace
4	E	2	Total	C	N	O	0	0	0
			28	16	2	10			
4	G	2	Total	C	N	O	0	0	0
			28	16	2	10			

- Molecule 5 is 2-acetamido-2-deoxy-beta-D-glucopyranose (three-letter code: NAG) (formula: $C_8H_{15}NO_6$).



Mol	Chain	Residues	Atoms				ZeroOcc	AltConf
5	A	1	Total	C	N	O	0	0
			14	8	1	5		
5	A	1	Total	C	N	O	0	0
			14	8	1	5		
5	A	1	Total	C	N	O	0	0
			14	8	1	5		
5	B	1	Total	C	N	O	0	0
			14	8	1	5		
5	B	1	Total	C	N	O	0	0
			14	8	1	5		
5	B	1	Total	C	N	O	0	0
			14	8	1	5		

- Molecule 6 is GLYCEROL (three-letter code: GOL) (formula: $C_3H_8O_3$).



Mol	Chain	Residues	Atoms	ZeroOcc	AltConf
6	A	1	Total C O 6 3 3	0	0
6	B	1	Total C O 6 3 3	0	0

- Molecule 7 is water.

Mol	Chain	Residues	Atoms	ZeroOcc	AltConf
7	A	22	Total O 22 22	0	0
7	B	30	Total O 30 30	0	0
7	C	4	Total O 4 4	0	0

4 Data and refinement statistics

Property	Value	Source
Space group	P 21 21 21	Depositor
Cell constants a, b, c, α , β , γ	96.04Å 108.01Å 173.12Å 90.00° 90.00° 90.00°	Depositor
Resolution (Å)	45.82 – 2.80 49.46 – 2.80	Depositor EDS
% Data completeness (in resolution range)	99.8 (45.82-2.80) 99.7 (49.46-2.80)	Depositor EDS
R_{merge}	0.07	Depositor
R_{sym}	(Not available)	Depositor
$\langle I/\sigma(I) \rangle$ ¹	2.57 (at 2.81Å)	Xtrriage
Refinement program	PHENIX 1.7.1_743	Depositor
R, R_{free}	0.194 , 0.251 0.191 , 0.245	Depositor DCC
R_{free} test set	2235 reflections (4.96%)	wwPDB-VP
Wilson B-factor (Å ²)	60.6	Xtrriage
Anisotropy	0.178	Xtrriage
Bulk solvent k_{sol} (e/Å ³), B_{sol} (Å ²)	0.31 , 42.7	EDS
L-test for twinning ²	$\langle L \rangle = 0.50$, $\langle L^2 \rangle = 0.33$	Xtrriage
Estimated twinning fraction	No twinning to report.	Xtrriage
F_o, F_c correlation	0.94	EDS
Total number of atoms	10613	wwPDB-VP
Average B, all atoms (Å ²)	61.0	wwPDB-VP

Xtrriage's analysis on translational NCS is as follows: *The largest off-origin peak in the Patterson function is 3.09% of the height of the origin peak. No significant pseudotranslation is detected.*

¹Intensities estimated from amplitudes.

²Theoretical values of $\langle |L| \rangle$, $\langle L^2 \rangle$ for acentric reflections are 0.5, 0.333 respectively for untwinned datasets, and 0.375, 0.2 for perfectly twinned datasets.

5 Model quality [i](#)

5.1 Standard geometry [i](#)

Bond lengths and bond angles in the following residue types are not validated in this section: FUC, GOL, NAG

The Z score for a bond length (or angle) is the number of standard deviations the observed value is removed from the expected value. A bond length (or angle) with $|Z| > 5$ is considered an outlier worth inspection. RMSZ is the root-mean-square of all Z scores of the bond lengths (or angles).

Mol	Chain	Bond lengths		Bond angles	
		RMSZ	# Z >5	RMSZ	# Z >5
1	A	0.22	0/4963	0.40	0/6734
1	B	0.23	0/4976	0.42	0/6753
2	C	0.23	0/605	0.40	0/801
All	All	0.23	0/10544	0.41	0/14288

There are no bond length outliers.

There are no bond angle outliers.

There are no chirality outliers.

There are no planarity outliers.

5.2 Too-close contacts [i](#)

In the following table, the Non-H and H(model) columns list the number of non-hydrogen atoms and hydrogen atoms in the chain respectively. The H(added) column lists the number of hydrogen atoms added and optimized by MolProbity. The Clashes column lists the number of clashes within the asymmetric unit, whereas Symm-Clashes lists symmetry-related clashes.

Mol	Chain	Non-H	H(model)	H(added)	Clashes	Symm-Clashes
1	A	4860	0	4735	100	0
1	B	4873	0	4743	91	0
2	C	596	0	589	11	0
3	D	38	0	34	0	0
3	F	38	0	34	0	0
4	E	28	0	25	1	0
4	G	28	0	25	0	0
5	A	42	0	39	0	0
5	B	42	0	39	2	0
6	A	6	0	8	1	0

Continued on next page...

Continued from previous page...

Mol	Chain	Non-H	H(model)	H(added)	Clashes	Symm-Clashes
6	B	6	0	8	0	0
7	A	22	0	0	0	0
7	B	30	0	0	1	0
7	C	4	0	0	0	0
All	All	10613	0	10279	203	0

The all-atom clashscore is defined as the number of clashes found per 1000 atoms (including hydrogen atoms). The all-atom clashscore for this structure is 10.

All (203) close contacts within the same asymmetric unit are listed below, sorted by their clash magnitude.

Atom-1	Atom-2	Interatomic distance (Å)	Clash overlap (Å)
1:A:715:LEU:HD12	1:A:757:PRO:HB2	1.50	0.92
1:B:773:ILE:HB	1:B:787:VAL:HG13	1.57	0.86
1:B:628:ALA:N	1:B:884:SER:HG	1.76	0.82
1:A:723:ASP:HB3	1:A:726:THR:HG22	1.63	0.80
1:A:1145:LEU:HD12	1:A:1164:GLN:HG3	1.64	0.78
2:C:202:ALA:HB3	2:C:211:LYS:HD2	1.64	0.78
1:A:1206:PRO:HG2	1:A:1220:VAL:HG21	1.64	0.78
1:A:810:LEU:HB3	2:C:229:HIS:CE1	2.22	0.74
1:B:1058:ARG:HG3	1:B:1058:ARG:HH11	1.54	0.72
1:A:679:THR:HG22	1:A:686:ILE:HG12	1.73	0.69
1:A:1032:CYS:SG	1:A:1035:THR:HG22	2.32	0.69
1:A:730:GLU:OE1	1:A:739:ARG:HD3	1.94	0.67
1:A:902:HIS:CD2	1:A:929:CYS:HB2	2.30	0.66
1:B:869:ILE:HG22	1:B:870:GLN:HG2	1.76	0.66
2:C:199:LEU:HD23	2:C:212:PRO:HA	1.78	0.65
1:A:1220:VAL:HG13	1:A:1226:THR:HG22	1.79	0.65
1:A:634:LEU:HD21	1:A:879:ILE:HD11	1.78	0.63
1:A:1057:ASP:HA	1:A:1077:GLN:HG2	1.80	0.63
2:C:196:ALA:HB3	2:C:199:LEU:HD12	1.80	0.62
1:A:710:MET:HG2	1:A:711:ALA:N	2.13	0.62
1:A:1060:ARG:HG3	1:A:1076:LEU:HD12	1.82	0.62
1:B:1032:CYS:SG	1:B:1035:THR:HG22	2.40	0.61
1:A:1005:SER:HB3	1:A:1014:ILE:HB	1.83	0.61
1:A:715:LEU:HD13	1:A:891:ASN:HB2	1.82	0.60
1:A:699:VAL:HG12	1:A:700:VAL:HG23	1.83	0.60
1:A:1055:GLU:O	1:A:1056:GLN:HB3	2.00	0.60
1:A:1153:PHE:CD2	1:A:1154:GLU:HG2	2.36	0.60
1:A:1101:LEU:HD22	1:A:1104:PRO:HG3	1.84	0.59
1:A:771:PRO:HB2	1:A:790:VAL:O	2.02	0.59

Continued on next page...

Continued from previous page...

Atom-1	Atom-2	Interatomic distance (Å)	Clash overlap (Å)
1:B:669:PHE:HD2	1:B:880:LEU:HD11	1.67	0.59
1:A:838:LEU:HD12	1:A:846:TYR:O	2.03	0.59
1:B:936:LEU:HD21	1:B:1191:ILE:CG1	2.33	0.59
1:B:798:ILE:HG12	1:B:805:LEU:CD2	2.34	0.58
2:C:182:LYS:HE3	2:C:193:SER:O	2.03	0.58
1:A:907:VAL:HB	1:A:908:PRO:HD2	1.85	0.58
1:A:1192:HIS:ND1	6:A:101:GOL:H12	2.19	0.58
1:A:944:ILE:HG21	1:A:979:LEU:HD21	1.84	0.58
1:B:934:THR:HG22	1:B:1196:GLU:H	1.70	0.57
1:A:1160:ILE:HG22	1:A:1167:ILE:HG12	1.85	0.57
1:A:643:ARG:HH21	1:A:655:ALA:HB2	1.70	0.57
1:A:990:ARG:HG2	1:A:1001:THR:HG22	1.85	0.57
1:B:795:GLY:O	1:B:797:THR:HG22	2.04	0.57
1:B:1035:THR:HG23	1:B:1037:VAL:HG22	1.86	0.57
1:B:679:THR:HG22	1:B:686:ILE:HG12	1.87	0.56
1:A:1102:SER:OG	1:A:1122:ASP:HB2	2.06	0.56
1:B:1160:ILE:HD12	1:B:1188:LEU:HB3	1.88	0.56
1:A:814:LEU:HD13	1:A:816:GLU:HG3	1.88	0.56
1:B:629:ASP:OD1	1:B:630:PRO:HD3	2.06	0.56
1:B:715:LEU:HD12	1:B:757:PRO:HB2	1.87	0.56
1:B:747:LEU:HD22	1:B:750:PRO:HG3	1.87	0.56
1:B:1221:LYS:HE3	1:B:1227:ARG:CG	2.37	0.55
1:A:968:ARG:HG3	1:A:984:SER:OG	2.06	0.55
1:B:939:SER:HB2	1:B:967:VAL:HG21	1.89	0.55
1:B:1014:ILE:HG22	1:B:1016:PRO:HD3	1.89	0.54
1:B:1119:ALA:HB1	1:B:1147:PRO:HB2	1.89	0.54
1:B:1072:TYR:CE1	1:B:1085:ARG:HD3	2.42	0.54
1:A:1215:SER:HB2	1:A:1242:SER:HA	1.88	0.54
1:A:988:MET:HB2	1:A:1003:VAL:O	2.08	0.54
1:B:880:LEU:C	1:B:880:LEU:HD23	2.28	0.54
1:B:646:SER:HB2	1:B:651:ASN:HD22	1.74	0.53
1:A:1002:VAL:HG22	1:A:1003:VAL:HG23	1.90	0.53
1:B:744:TRP:CE2	1:B:955:PRO:HD3	2.43	0.53
1:B:1114:GLY:HA2	1:B:1131:LEU:HD22	1.89	0.53
1:A:1110:ASP:OD1	1:A:1113:LEU:HG	2.09	0.53
1:A:1215:SER:HG	1:A:1216:HIS:CE1	2.27	0.53
1:B:773:ILE:HB	1:B:787:VAL:CG1	2.36	0.53
1:B:703:GLY:HA2	1:B:958:ILE:HD12	1.91	0.53
2:C:214:LEU:HD23	2:C:220:CYS:HB3	1.91	0.53
1:B:1200:GLN:HE22	1:B:1204:GLN:HE21	1.55	0.52
1:B:1125:ARG:HD2	7:B:10:HOH:O	2.09	0.52

Continued on next page...

Continued from previous page...

Atom-1	Atom-2	Interatomic distance (Å)	Clash overlap (Å)
1:B:669:PHE:CD2	1:B:880:LEU:HD11	2.45	0.52
1:B:937:LEU:O	1:B:1192:HIS:N	2.39	0.51
1:B:859:ASN:HB3	1:B:862:SER:HB3	1.93	0.51
1:A:986:GLN:HG3	1:A:990:ARG:NH2	2.26	0.51
1:A:634:LEU:HD11	1:A:879:ILE:HG12	1.92	0.51
1:A:726:THR:HG23	1:A:728:ARG:HG3	1.93	0.51
1:A:699:VAL:HG13	1:A:736:GLY:CA	2.41	0.51
1:B:1001:THR:CG2	1:B:1004:VAL:HG22	2.40	0.51
1:A:1029:TYR:OH	1:A:1088:LEU:HB3	2.11	0.50
1:B:1221:LYS:HE3	1:B:1227:ARG:HG2	1.93	0.50
1:A:1182:GLN:HB3	1:A:1185:ILE:HD11	1.94	0.49
1:A:908:PRO:O	1:A:909:VAL:HG12	2.12	0.49
1:A:988:MET:SD	1:A:990:ARG:NE	2.86	0.49
1:A:1040:VAL:HG13	1:A:1048:VAL:HB	1.93	0.49
1:B:722:ALA:HB1	1:B:750:PRO:HB2	1.94	0.49
1:B:964:LEU:HD22	1:B:967:VAL:HG12	1.95	0.48
1:B:1071:MET:HB3	1:B:1088:LEU:HD23	1.95	0.48
1:A:1014:ILE:HG22	1:A:1016:PRO:HD3	1.93	0.48
1:B:751:ARG:HG2	1:B:767:TRP:CZ2	2.48	0.48
1:B:1159:TRP:HZ3	1:B:1170:ILE:HG23	1.78	0.48
1:A:814:LEU:CD1	1:A:816:GLU:HG3	2.43	0.48
1:A:1051:VAL:O	1:A:1090:GLY:HA3	2.13	0.48
1:B:1026:ARG:O	1:B:1043:LEU:HD13	2.14	0.48
1:A:673:ASP:OD2	1:A:675:ARG:HD2	2.14	0.48
1:B:629:ASP:N	1:B:630:PRO:CD	2.77	0.48
1:B:635:LEU:HB2	1:B:880:LEU:HD22	1.95	0.48
1:B:1050:VAL:HG12	1:B:1232:MET:HG3	1.95	0.48
1:A:1030:TRP:CE2	1:A:1039:ASN:HB3	2.49	0.48
1:A:805:LEU:O	1:A:817:SER:HA	2.13	0.47
1:B:936:LEU:HD21	1:B:1191:ILE:HD11	1.95	0.47
1:B:1051:VAL:O	1:B:1090:GLY:HA3	2.14	0.47
1:B:699:VAL:HG13	1:B:736:GLY:CA	2.44	0.47
1:B:1005:SER:HB2	1:B:1014:ILE:HB	1.96	0.47
1:B:1198:ASN:HB3	1:B:1201:GLU:HB3	1.95	0.47
1:A:635:LEU:HB2	1:A:880:LEU:HD23	1.95	0.47
1:B:857:ARG:HG2	1:B:869:ILE:HD11	1.96	0.47
1:A:1159:TRP:HZ3	1:A:1170:ILE:HG23	1.79	0.47
1:B:1233:HIS:CE1	1:B:1234:LEU:HG	2.50	0.47
1:A:986:GLN:HG3	1:A:990:ARG:HH22	1.80	0.47
1:B:1027:TYR:CE1	1:B:1042:ARG:HG2	2.50	0.47
1:B:1160:ILE:HG22	1:B:1167:ILE:HG12	1.95	0.47

Continued on next page...

Continued from previous page...

Atom-1	Atom-2	Interatomic distance (Å)	Clash overlap (Å)
1:A:721:TRP:CE2	1:A:730:GLU:HB2	2.49	0.47
1:B:748:ASP:OD2	1:B:768:GLY:HA3	2.15	0.47
1:A:1004:VAL:HG12	1:A:1005:SER:N	2.29	0.46
1:A:634:LEU:O	1:A:644:ARG:HA	2.16	0.46
1:B:1058:ARG:HG3	1:B:1058:ARG:NH1	2.25	0.46
1:A:1206:PRO:HG2	1:A:1220:VAL:CG2	2.42	0.46
1:A:1157:LEU:HD23	1:A:1170:ILE:HD11	1.96	0.46
2:C:214:LEU:HB3	2:C:263:CYS:SG	2.56	0.46
1:A:1004:VAL:HG12	1:A:1005:SER:H	1.81	0.46
1:A:1025:SER:O	1:A:1026:ARG:HB2	2.16	0.46
2:C:184:GLN:O	2:C:210:CYS:HB2	2.16	0.46
1:B:1206:PRO:HB2	1:B:1226:THR:HG21	1.97	0.46
5:B:2865:NAG:O7	5:B:2865:NAG:H3	2.15	0.46
1:A:931:ALA:HB1	1:A:932:PRO:HD2	1.98	0.45
1:B:850:TRP:CH2	2:C:233:ILE:HD13	2.51	0.45
1:B:959:LEU:HA	1:B:960:PRO:HD3	1.80	0.45
1:B:1001:THR:HG21	1:B:1004:VAL:HG22	1.98	0.45
1:B:1062:ILE:HG13	1:B:1063:VAL:N	2.32	0.45
1:A:1159:TRP:CZ3	1:A:1170:ILE:HG23	2.52	0.45
1:A:939:SER:HB2	1:A:967:VAL:HG21	1.99	0.45
1:B:699:VAL:HG12	1:B:700:VAL:HG23	1.97	0.45
1:B:1017:TYR:CE2	1:B:1060:ARG:HB3	2.51	0.45
1:B:1102:SER:HB3	1:B:1122:ASP:HB2	1.97	0.45
1:A:1060:ARG:HG3	1:A:1076:LEU:CD1	2.46	0.45
1:B:686:ILE:HG21	1:B:719:LEU:HD21	1.98	0.45
1:B:843:ASP:OD1	1:B:843:ASP:N	2.49	0.45
1:A:1245:GLU:HA	1:A:1246:PRO:HD3	1.86	0.45
1:B:991:LYS:O	1:B:999:GLY:HA2	2.17	0.45
5:B:2859:NAG:O7	5:B:2859:NAG:H3	2.16	0.45
1:A:839:THR:HG22	1:A:846:TYR:HB2	1.98	0.44
1:A:1038:ILE:HD12	1:A:1052:LEU:HD13	1.99	0.44
1:A:775:ARG:HG2	1:A:776:ALA:N	2.32	0.44
1:A:963:SER:HA	1:A:965:ARG:NH1	2.32	0.44
1:A:1057:ASP:HB2	1:A:1075:ASN:HD21	1.81	0.44
1:B:832:LEU:CB	1:B:835:PRO:HG3	2.47	0.44
1:A:1205:HIS:CE1	1:A:1207:CYS:HB3	2.53	0.44
1:B:739:ARG:HG3	1:B:740:GLN:N	2.31	0.44
1:B:787:VAL:HA	1:B:788:PRO:HD3	1.65	0.44
1:A:751:ARG:HG3	1:A:767:TRP:CD1	2.53	0.44
1:A:891:ASN:HD21	1:A:906:ALA:HB2	1.83	0.44
1:A:934:THR:HG22	1:A:1153:PHE:CZ	2.53	0.43

Continued on next page...

Continued from previous page...

Atom-1	Atom-2	Interatomic distance (Å)	Clash overlap (Å)
1:A:813:ASN:OD1	1:A:835:PRO:HD2	2.18	0.43
1:A:744:TRP:CE2	1:A:955:PRO:HD3	2.54	0.43
1:B:681:ILE:HG22	1:B:707:PRO:HD2	1.99	0.43
1:B:814:LEU:HD13	1:B:816:GLU:HG3	2.00	0.43
1:A:1157:LEU:O	1:A:1169:LYS:HA	2.18	0.43
1:B:628:ALA:HB1	1:B:630:PRO:HD2	1.99	0.43
1:A:1077:GLN:HB2	1:A:1080:SER:O	2.19	0.43
1:A:978:GLN:OE1	1:A:991:LYS:HE2	2.18	0.43
1:B:1064:VAL:C	1:B:1066:PRO:HD3	2.38	0.43
1:A:939:SER:HB3	1:A:970:ILE:HD13	2.00	0.43
1:B:901:SER:CB	1:B:928:THR:HA	2.49	0.43
1:B:1206:PRO:HB2	1:B:1226:THR:CG2	2.48	0.43
1:A:1150:LEU:HD23	1:A:1159:TRP:HB3	1.99	0.43
1:B:847:TRP:HH2	1:B:866:ARG:HD2	1.84	0.43
2:C:203:ARG:HG2	2:C:235:GLN:OE1	2.18	0.43
1:B:1030:TRP:CE2	1:B:1039:ASN:HB3	2.54	0.43
4:E:1:NAG:O7	4:E:1:NAG:H3	2.18	0.43
1:B:859:ASN:CB	1:B:862:SER:HB3	2.49	0.42
1:A:1027:TYR:HE1	1:A:1029:TYR:HE2	1.66	0.42
1:B:684:LYS:NZ	1:B:705:ASP:O	2.50	0.42
1:A:798:ILE:HG23	1:A:820:MET:CE	2.49	0.42
1:A:848:THR:HG22	1:A:855:ILE:HG12	2.00	0.42
1:A:1055:GLU:O	1:A:1056:GLN:CB	2.67	0.42
1:B:1161:ASP:HB3	1:B:1164:GLN:HB2	2.02	0.42
1:B:1166:MET:HB2	1:B:1166:MET:HE3	1.94	0.42
1:B:1072:TYR:CZ	1:B:1085:ARG:HD3	2.55	0.42
1:B:805:LEU:O	1:B:817:SER:HA	2.20	0.42
1:B:1035:THR:O	1:B:1037:VAL:HG13	2.19	0.42
1:A:936:LEU:HD23	1:A:1193:ALA:HA	2.01	0.42
1:B:635:LEU:HB2	1:B:880:LEU:CD2	2.50	0.42
1:B:1066:PRO:HA	1:B:1088:LEU:HD11	2.02	0.42
1:A:1144:ILE:CG2	1:A:1147:PRO:HG3	2.50	0.41
1:B:991:LYS:HE3	1:B:1000:PHE:HB3	2.01	0.41
1:B:1041:THR:HG22	1:B:1042:ARG:O	2.20	0.41
1:A:786:LEU:HD12	1:A:786:LEU:HA	1.94	0.41
1:A:1156:TRP:CH2	1:A:1176:GLU:HB3	2.55	0.41
1:B:1036:ASN:ND2	1:B:1058:ARG:HG2	2.35	0.41
1:A:979:LEU:O	1:A:991:LYS:HA	2.21	0.41
1:A:656:ILE:HA	1:A:657:PRO:HD3	1.91	0.41
1:A:935:PHE:HB3	1:A:948:VAL:HG12	2.02	0.41
1:A:710:MET:CG	1:A:711:ALA:N	2.82	0.41

Continued on next page...

Continued from previous page...

Atom-1	Atom-2	Interatomic distance (Å)	Clash overlap (Å)
1:A:636:PHE:CE2	1:A:643:ARG:HB2	2.56	0.41
1:A:919:HIS:HB2	1:A:946:ARG:HH21	1.86	0.41
1:A:1025:SER:HB3	1:A:1027:TYR:CE2	2.56	0.41
1:B:838:LEU:HD12	1:B:846:TYR:O	2.21	0.40
1:B:763:TYR:CE1	1:B:775:ARG:HG3	2.56	0.40
1:A:762:MET:HB3	1:A:778:MET:HG2	2.03	0.40
1:A:991:LYS:NZ	1:A:998:GLN:O	2.51	0.40
1:B:1002:VAL:HG22	1:B:1003:VAL:HG23	2.02	0.40
2:C:199:LEU:HD23	2:C:212:PRO:CA	2.47	0.40
1:A:959:LEU:HA	1:A:960:PRO:HD3	1.77	0.40

There are no symmetry-related clashes.

5.3 Torsion angles [i](#)

5.3.1 Protein backbone [i](#)

In the following table, the Percentiles column shows the percent Ramachandran outliers of the chain as a percentile score with respect to all X-ray entries followed by that with respect to entries of similar resolution.

The Analysed column shows the number of residues for which the backbone conformation was analysed, and the total number of residues.

Mol	Chain	Analysed	Favoured	Allowed	Outliers	Percentiles
1	A	606/629 (96%)	553 (91%)	51 (8%)	2 (0%)	41 72
1	B	608/629 (97%)	565 (93%)	42 (7%)	1 (0%)	47 78
2	C	72/97 (74%)	67 (93%)	5 (7%)	0	100 100
All	All	1286/1355 (95%)	1185 (92%)	98 (8%)	3 (0%)	47 78

All (3) Ramachandran outliers are listed below:

Mol	Chain	Res	Type
1	A	909	VAL
1	A	1056	GLN
1	B	657	PRO

5.3.2 Protein sidechains [i](#)

In the following table, the Percentiles column shows the percent sidechain outliers of the chain as a percentile score with respect to all X-ray entries followed by that with respect to entries of similar resolution.

The Analysed column shows the number of residues for which the sidechain conformation was analysed, and the total number of residues.

Mol	Chain	Analysed	Rotameric	Outliers	Percentiles	
1	A	532/550 (97%)	518 (97%)	14 (3%)	46	79
1	B	533/550 (97%)	516 (97%)	17 (3%)	39	73
2	C	66/85 (78%)	65 (98%)	1 (2%)	65	89
All	All	1131/1185 (95%)	1099 (97%)	32 (3%)	43	77

All (32) residues with a non-rotameric sidechain are listed below:

Mol	Chain	Res	Type
1	A	726	THR
1	A	734	LEU
1	A	820	MET
1	A	880	LEU
1	A	909	VAL
1	A	949	ILE
1	A	968	ARG
1	A	991	LYS
1	A	1002	VAL
1	A	1027	TYR
1	A	1082	LYS
1	A	1125	ARG
1	A	1140	GLU
1	A	1197	LEU
1	B	634	LEU
1	B	683	LEU
1	B	739	ARG
1	B	787	VAL
1	B	797	THR
1	B	814	LEU
1	B	880	LEU
1	B	1002	VAL
1	B	1004	VAL
1	B	1026	ARG
1	B	1040	VAL
1	B	1062	ILE

Continued on next page...

Continued from previous page...

Mol	Chain	Res	Type
1	B	1096	LEU
1	B	1125	ARG
1	B	1128	SER
1	B	1131	LEU
1	B	1197	LEU
2	C	214	LEU

Sometimes sidechains can be flipped to improve hydrogen bonding and reduce clashes. All (2) such sidechains are listed below:

Mol	Chain	Res	Type
1	B	1204	GLN
2	C	229	HIS

5.3.3 RNA [i](#)

There are no RNA molecules in this entry.

5.4 Non-standard residues in protein, DNA, RNA chains [i](#)

There are no non-standard protein/DNA/RNA residues in this entry.

5.5 Carbohydrates [i](#)

10 monosaccharides are modelled in this entry.

In the following table, the Counts columns list the number of bonds (or angles) for which Mogul statistics could be retrieved, the number of bonds (or angles) that are observed in the model and the number of bonds (or angles) that are defined in the Chemical Component Dictionary. The Link column lists molecule types, if any, to which the group is linked. The Z score for a bond length (or angle) is the number of standard deviations the observed value is removed from the expected value. A bond length (or angle) with $|Z| > 2$ is considered an outlier worth inspection. RMSZ is the root-mean-square of all Z scores of the bond lengths (or angles).

Mol	Type	Chain	Res	Link	Bond lengths			Bond angles		
					Counts	RMSZ	$\# Z > 2$	Counts	RMSZ	$\# Z > 2$
3	NAG	D	1	1,3	14,14,15	0.52	0	17,19,21	0.70	0
3	NAG	D	2	3	14,14,15	0.50	0	17,19,21	0.62	0
3	FUC	D	3	3	10,10,11	0.69	0	14,14,16	0.57	0
4	NAG	E	1	4,1	14,14,15	0.48	0	17,19,21	1.17	1 (5%)
4	NAG	E	2	4	14,14,15	0.50	0	17,19,21	0.66	0

Mol	Type	Chain	Res	Link	Bond lengths			Bond angles		
					Counts	RMSZ	# Z > 2	Counts	RMSZ	# Z > 2
3	NAG	F	1	1,3	14,14,15	0.50	0	17,19,21	0.65	0
3	NAG	F	2	3	14,14,15	0.48	0	17,19,21	0.70	0
3	FUC	F	3	3	10,10,11	0.64	0	14,14,16	0.62	0
4	NAG	G	1	4,1	14,14,15	0.48	0	17,19,21	1.30	1 (5%)
4	NAG	G	2	4	14,14,15	0.48	0	17,19,21	0.72	0

In the following table, the Chirals column lists the number of chiral outliers, the number of chiral centers analysed, the number of these observed in the model and the number defined in the Chemical Component Dictionary. Similar counts are reported in the Torsion and Rings columns. '-' means no outliers of that kind were identified.

Mol	Type	Chain	Res	Link	Chirals	Torsions	Rings
3	NAG	D	1	1,3	-	2/6/23/26	0/1/1/1
3	NAG	D	2	3	-	0/6/23/26	0/1/1/1
3	FUC	D	3	3	-	-	0/1/1/1
4	NAG	E	1	4,1	-	4/6/23/26	0/1/1/1
4	NAG	E	2	4	-	1/6/23/26	0/1/1/1
3	NAG	F	1	1,3	-	2/6/23/26	0/1/1/1
3	NAG	F	2	3	-	1/6/23/26	0/1/1/1
3	FUC	F	3	3	-	-	0/1/1/1
4	NAG	G	1	4,1	-	1/6/23/26	0/1/1/1
4	NAG	G	2	4	-	0/6/23/26	0/1/1/1

There are no bond length outliers.

All (2) bond angle outliers are listed below:

Mol	Chain	Res	Type	Atoms	Z	Observed(°)	Ideal(°)
4	G	1	NAG	C1-O5-C5	3.23	116.51	112.19
4	E	1	NAG	C1-O5-C5	2.68	115.78	112.19

There are no chirality outliers.

All (11) torsion outliers are listed below:

Mol	Chain	Res	Type	Atoms
4	E	1	NAG	C3-C2-N2-C7
3	F	1	NAG	C4-C5-C6-O6
3	D	1	NAG	O5-C5-C6-O6
3	F	1	NAG	O5-C5-C6-O6
3	D	1	NAG	C4-C5-C6-O6
4	E	1	NAG	O5-C5-C6-O6

Continued on next page...

Continued from previous page...

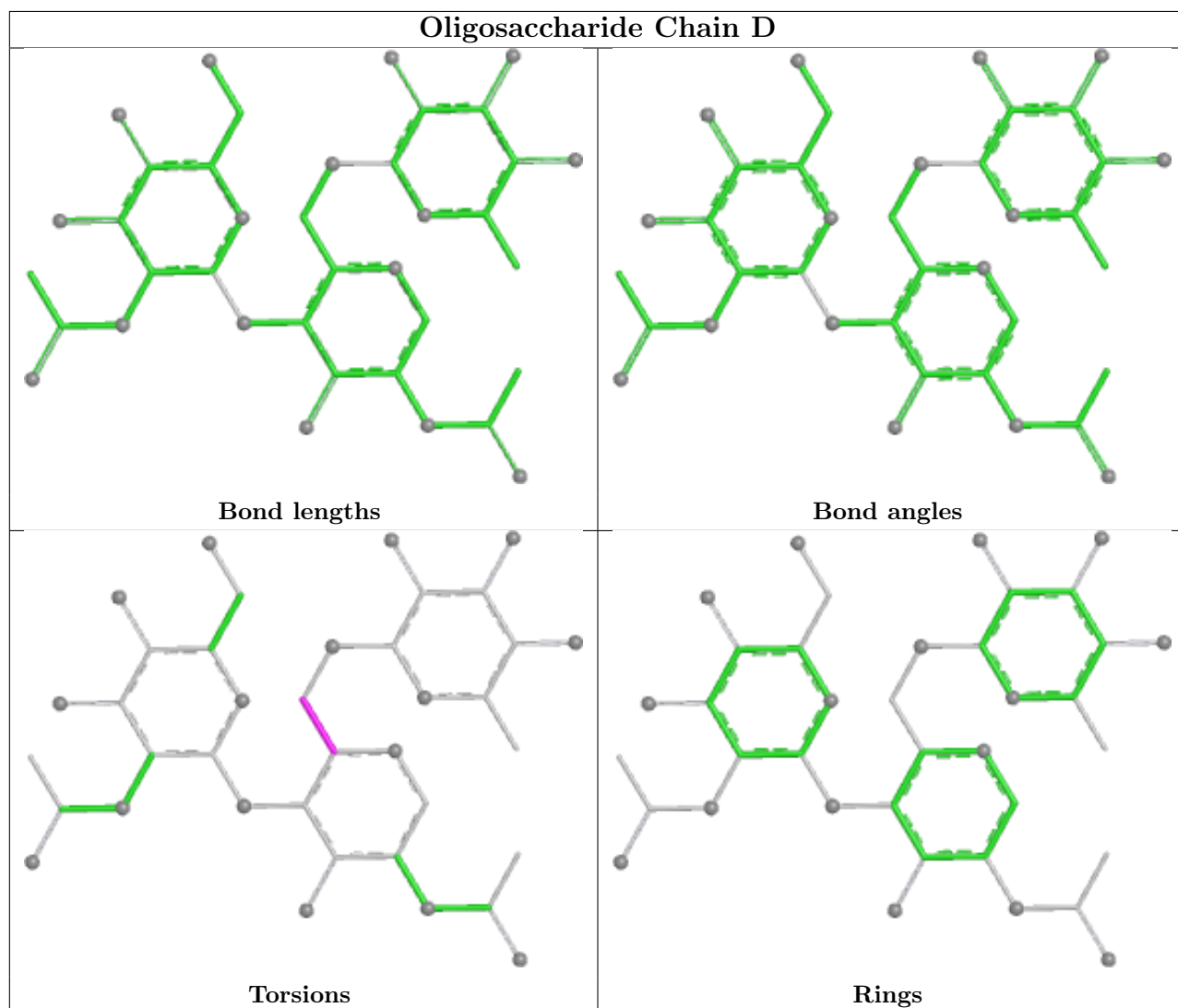
Mol	Chain	Res	Type	Atoms
3	F	2	NAG	C3-C2-N2-C7
4	G	1	NAG	C3-C2-N2-C7
4	E	1	NAG	C4-C5-C6-O6
4	E	2	NAG	C4-C5-C6-O6
4	E	1	NAG	O7-C7-N2-C2

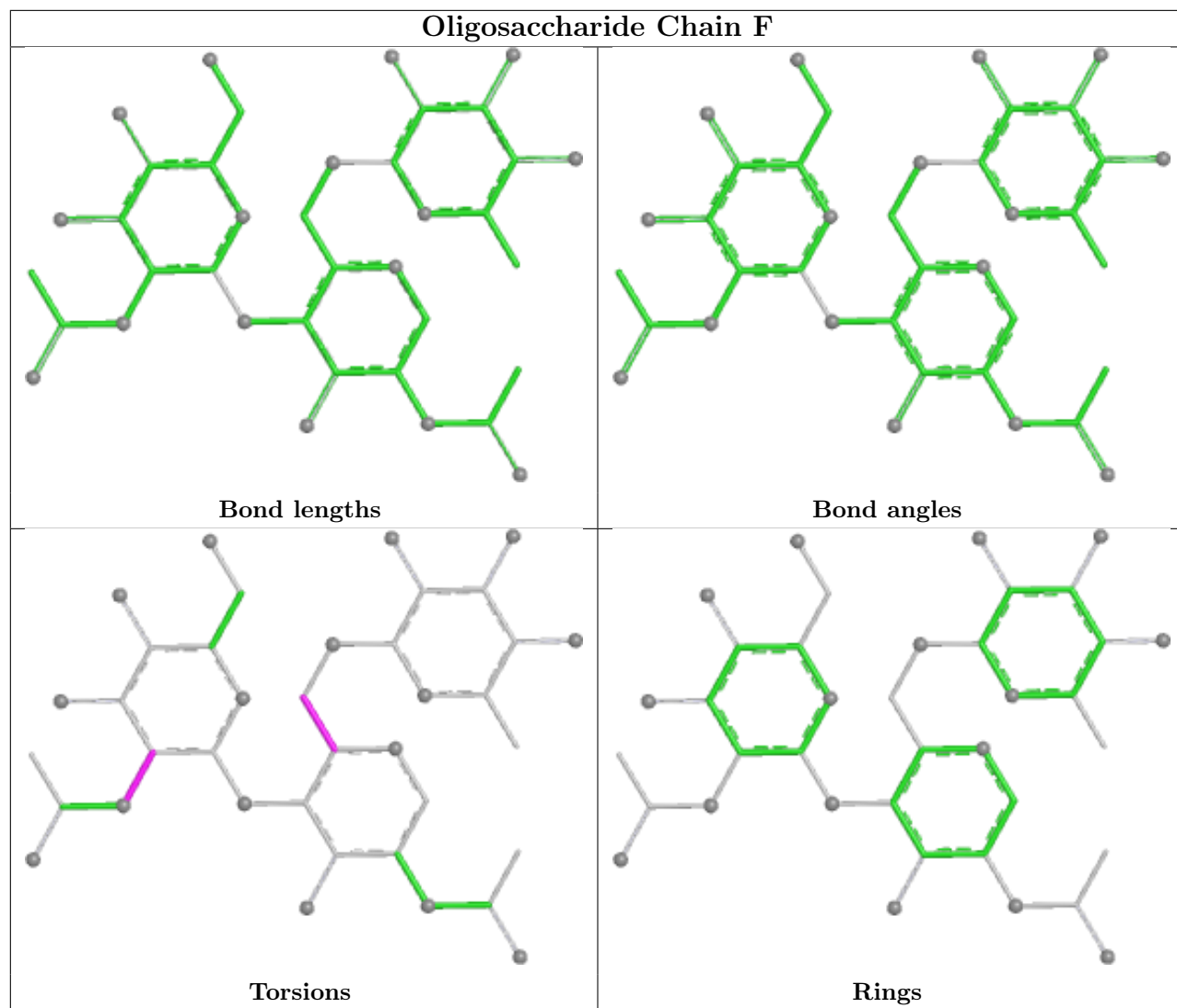
There are no ring outliers.

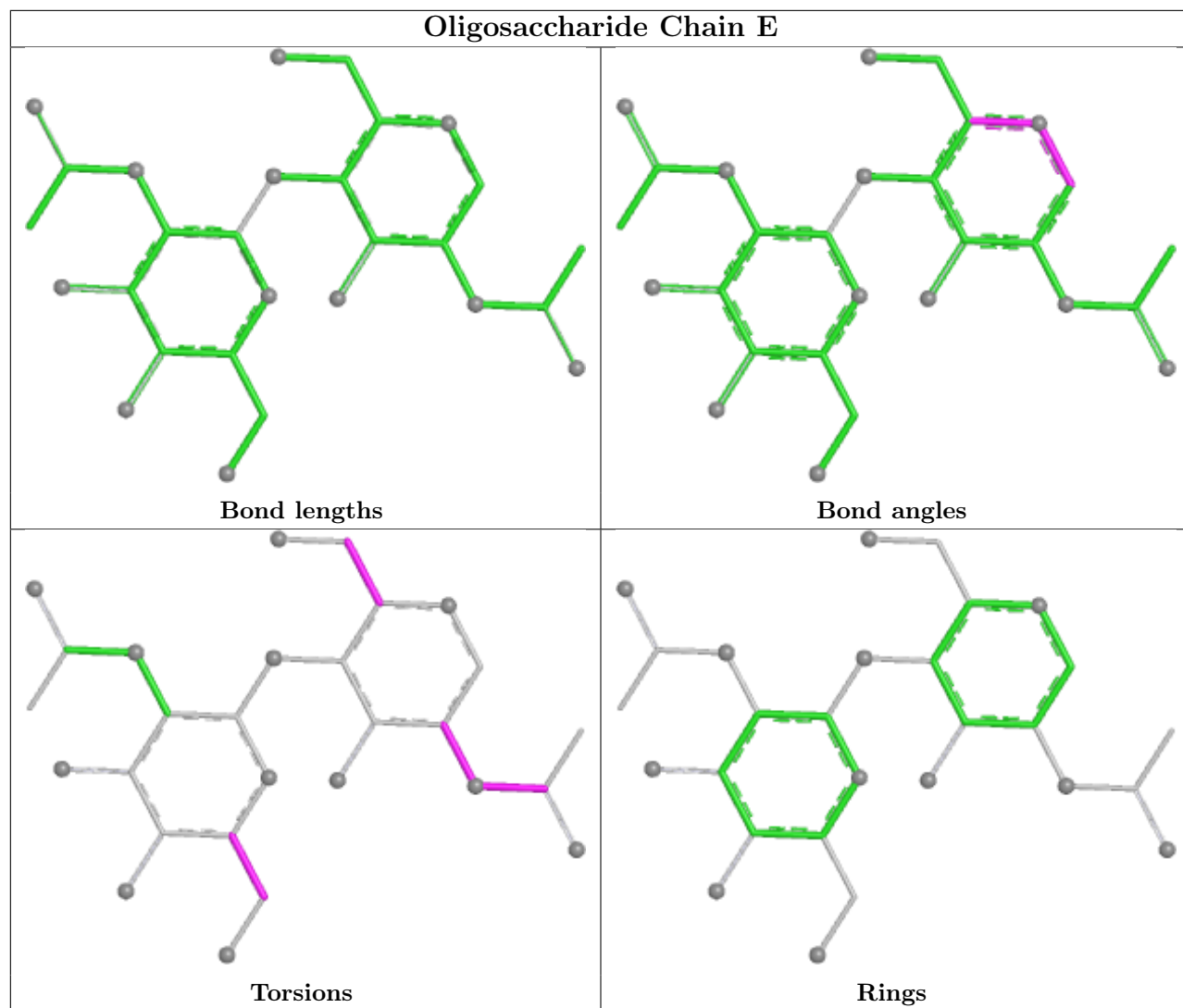
1 monomer is involved in 1 short contact:

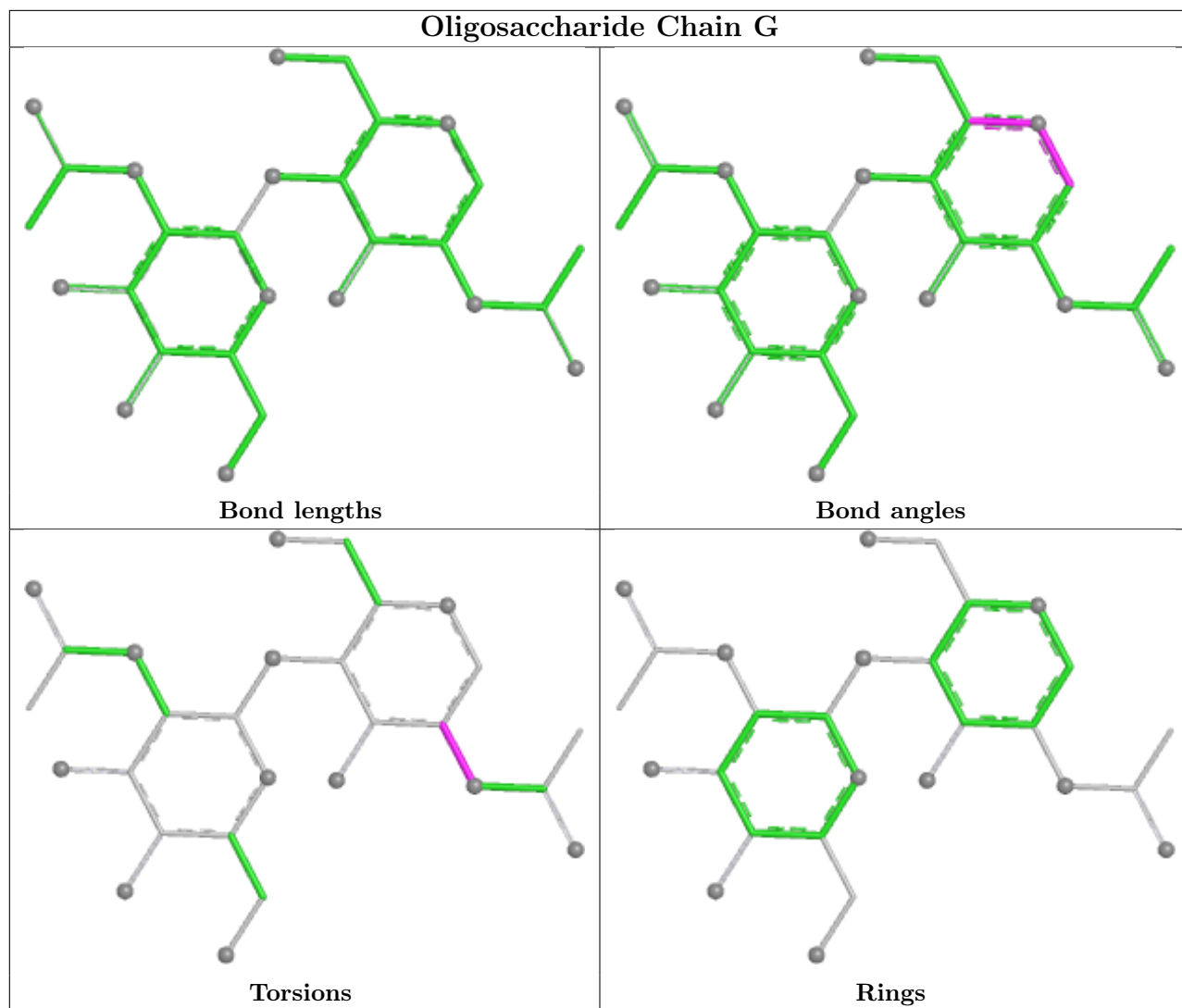
Mol	Chain	Res	Type	Clashes	Symm-Clashes
4	E	1	NAG	1	0

The following is a two-dimensional graphical depiction of Mogul quality analysis of bond lengths, bond angles, torsion angles, and ring geometry for oligosaccharide.









5.6 Ligand geometry [i](#)

8 ligands are modelled in this entry.

In the following table, the Counts columns list the number of bonds (or angles) for which Mogul statistics could be retrieved, the number of bonds (or angles) that are observed in the model and the number of bonds (or angles) that are defined in the Chemical Component Dictionary. The Link column lists molecule types, if any, to which the group is linked. The Z score for a bond length (or angle) is the number of standard deviations the observed value is removed from the expected value. A bond length (or angle) with $|Z| > 2$ is considered an outlier worth inspection. RMSZ is the root-mean-square of all Z scores of the bond lengths (or angles).

Mol	Type	Chain	Res	Link	Bond lengths			Bond angles		
					Counts	RMSZ	$\# Z > 2$	Counts	RMSZ	$\# Z > 2$
5	NAG	B	2859	1	14,14,15	0.48	0	17,19,21	0.86	0
5	NAG	B	2865	1	14,14,15	0.45	0	17,19,21	0.93	1 (5%)
5	NAG	A	2926	1	14,14,15	0.46	0	17,19,21	0.72	1 (5%)

Mol	Type	Chain	Res	Link	Bond lengths			Bond angles		
					Counts	RMSZ	# Z > 2	Counts	RMSZ	# Z > 2
6	GOL	A	101	-	5,5,5	0.38	0	5,5,5	0.31	0
5	NAG	A	2859	1	14,14,15	0.53	0	17,19,21	0.90	1 (5%)
5	NAG	A	2865	1	14,14,15	0.47	0	17,19,21	0.79	1 (5%)
5	NAG	B	2926	1	14,14,15	0.48	0	17,19,21	0.71	1 (5%)
6	GOL	B	102	-	5,5,5	0.39	0	5,5,5	0.24	0

In the following table, the Chirals column lists the number of chiral outliers, the number of chiral centers analysed, the number of these observed in the model and the number defined in the Chemical Component Dictionary. Similar counts are reported in the Torsion and Rings columns. '-' means no outliers of that kind were identified.

Mol	Type	Chain	Res	Link	Chirals	Torsions	Rings
5	NAG	B	2859	1	-	3/6/23/26	0/1/1/1
5	NAG	B	2865	1	-	2/6/23/26	0/1/1/1
5	NAG	A	2926	1	-	0/6/23/26	0/1/1/1
6	GOL	A	101	-	-	2/4/4/4	-
5	NAG	A	2859	1	-	0/6/23/26	0/1/1/1
5	NAG	A	2865	1	-	0/6/23/26	0/1/1/1
5	NAG	B	2926	1	-	2/6/23/26	0/1/1/1
6	GOL	B	102	-	-	1/4/4/4	-

There are no bond length outliers.

All (5) bond angle outliers are listed below:

Mol	Chain	Res	Type	Atoms	Z	Observed(°)	Ideal(°)
5	A	2859	NAG	C1-O5-C5	3.19	116.46	112.19
5	A	2865	NAG	C1-O5-C5	2.27	115.22	112.19
5	B	2926	NAG	C1-O5-C5	2.12	115.03	112.19
5	A	2926	NAG	C1-O5-C5	2.07	114.96	112.19
5	B	2865	NAG	C2-N2-C7	2.02	125.61	122.90

There are no chirality outliers.

All (10) torsion outliers are listed below:

Mol	Chain	Res	Type	Atoms
5	B	2859	NAG	C3-C2-N2-C7
5	B	2865	NAG	C3-C2-N2-C7
6	A	101	GOL	O1-C1-C2-C3
5	B	2859	NAG	O5-C5-C6-O6

Continued on next page...

Continued from previous page...

Mol	Chain	Res	Type	Atoms
5	B	2859	NAG	C4-C5-C6-O6
5	B	2926	NAG	C8-C7-N2-C2
5	B	2926	NAG	O7-C7-N2-C2
6	A	101	GOL	O1-C1-C2-O2
5	B	2865	NAG	O5-C5-C6-O6
6	B	102	GOL	C1-C2-C3-O3

There are no ring outliers.

3 monomers are involved in 3 short contacts:

Mol	Chain	Res	Type	Clashes	Symm-Clashes
5	B	2859	NAG	1	0
5	B	2865	NAG	1	0
6	A	101	GOL	1	0

5.7 Other polymers [i](#)

There are no such residues in this entry.

5.8 Polymer linkage issues [i](#)

There are no chain breaks in this entry.

6 Fit of model and data [i](#)

6.1 Protein, DNA and RNA chains [i](#)

In the following table, the column labelled ‘#RSRZ> 2’ contains the number (and percentage) of RSRZ outliers, followed by percent RSRZ outliers for the chain as percentile scores relative to all X-ray entries and entries of similar resolution. The OWAB column contains the minimum, median, 95th percentile and maximum values of the occupancy-weighted average B-factor per residue. The column labelled ‘Q< 0.9’ lists the number of (and percentage) of residues with an average occupancy less than 0.9.

Mol	Chain	Analysed	<RSRZ>	#RSRZ>2	OWAB(Å ²)	Q<0.9
1	A	610/629 (96%)	-0.29	4 (0%) 87 84	38, 61, 102, 132	0
1	B	612/629 (97%)	-0.34	4 (0%) 87 84	31, 51, 89, 125	0
2	C	76/97 (78%)	-0.36	0 100 100	35, 56, 93, 106	0
All	All	1298/1355 (95%)	-0.32	8 (0%) 89 86	31, 56, 97, 132	0

All (8) RSRZ outliers are listed below:

Mol	Chain	Res	Type	RSRZ
1	A	1078	GLU	3.4
1	B	1238	GLN	3.0
1	B	1241	LEU	2.6
1	A	1079	ARG	2.5
1	B	1239	ASP	2.5
1	A	1005	SER	2.4
1	A	1000	PHE	2.4
1	B	1005	SER	2.2

6.2 Non-standard residues in protein, DNA, RNA chains [i](#)

There are no non-standard protein/DNA/RNA residues in this entry.

6.3 Carbohydrates [i](#)

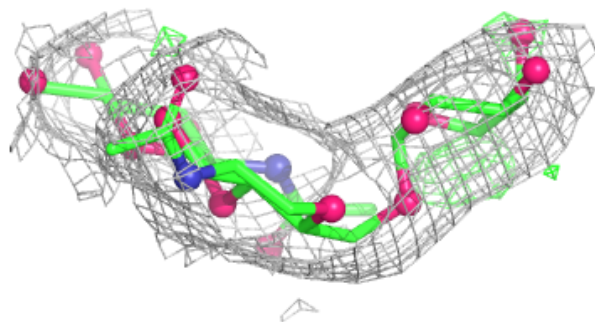
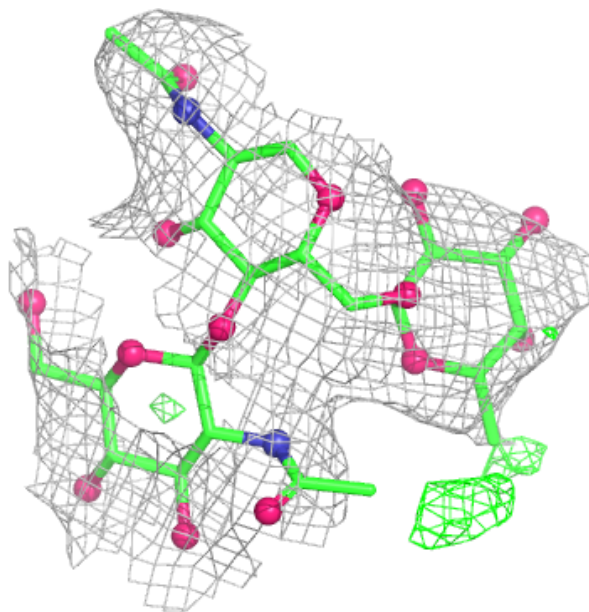
In the following table, the Atoms column lists the number of modelled atoms in the group and the number defined in the chemical component dictionary. The B-factors column lists the minimum, median, 95th percentile and maximum values of B factors of atoms in the group. The column labelled ‘Q< 0.9’ lists the number of atoms with occupancy less than 0.9.

Mol	Type	Chain	Res	Atoms	RSCC	RSR	B-factors(\AA^2)	Q<0.9
3	NAG	F	2	14/15	0.68	0.31	110,138,145,145	0
3	NAG	D	2	14/15	0.84	0.27	145,150,158,160	0
4	NAG	E	2	14/15	0.85	0.42	94,129,143,149	0
4	NAG	E	1	14/15	0.87	0.21	70,89,106,113	0
3	FUC	D	3	10/11	0.88	0.23	127,135,140,144	0
3	FUC	F	3	10/11	0.88	0.21	93,105,124,129	0
4	NAG	G	1	14/15	0.90	0.22	62,81,99,100	0
4	NAG	G	2	14/15	0.90	0.31	67,95,102,102	0
3	NAG	D	1	14/15	0.92	0.16	80,94,109,132	0
3	NAG	F	1	14/15	0.95	0.17	61,85,98,118	0

The following is a graphical depiction of the model fit to experimental electron density for oligosaccharide. Each fit is shown from different orientation to approximate a three-dimensional view.

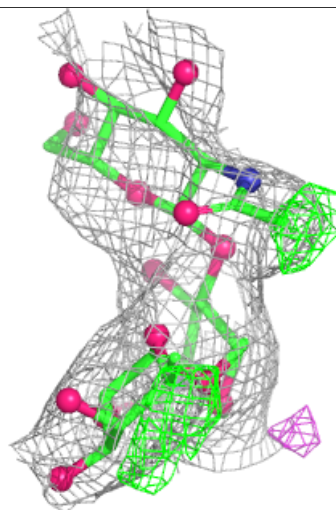
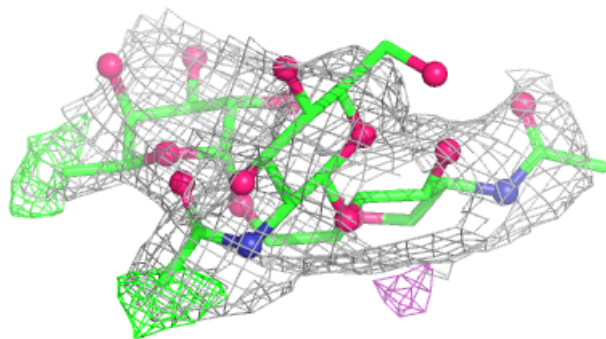
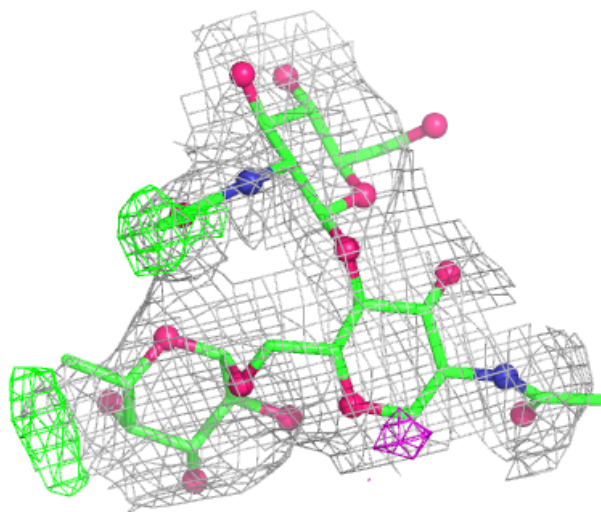
Electron density around Chain D:

$2mF_o-DF_c$ (at 0.7 rmsd) in gray
 mF_o-DF_c (at 3 rmsd) in purple (negative)
and green (positive)



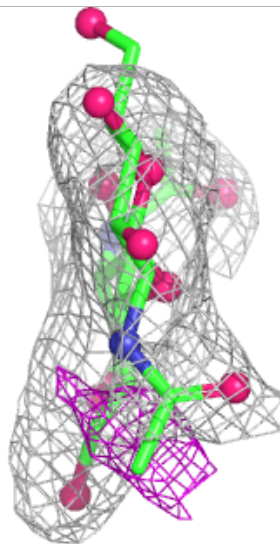
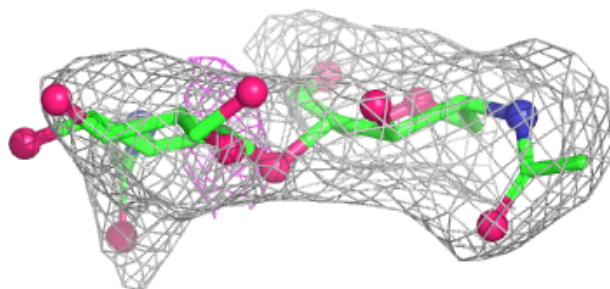
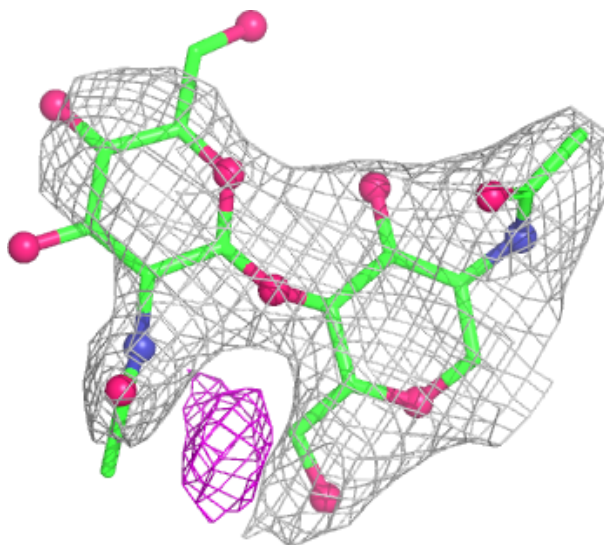
Electron density around Chain F:

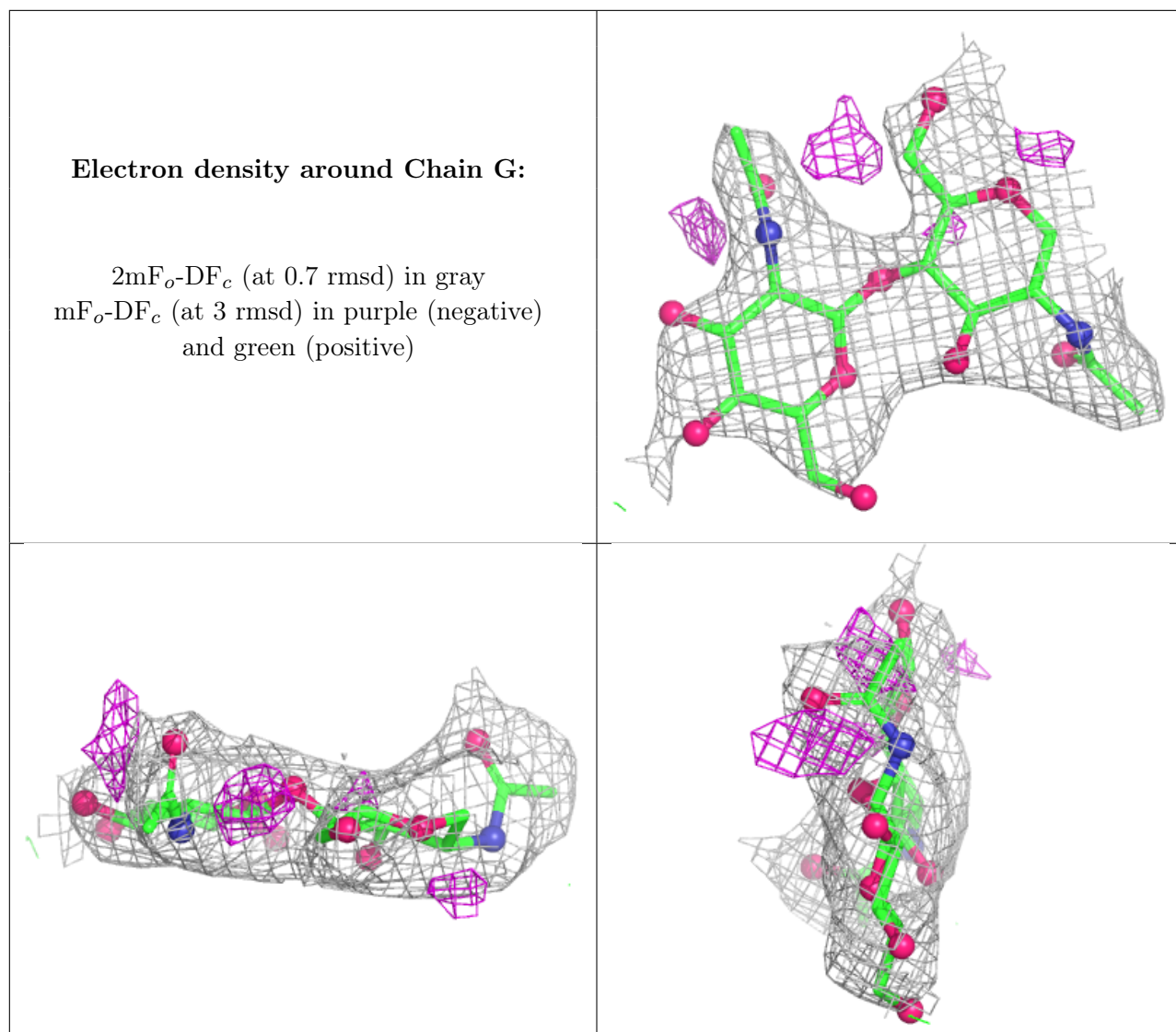
$2mF_o-DF_c$ (at 0.7 rmsd) in gray
 mF_o-DF_c (at 3 rmsd) in purple (negative)
and green (positive)



Electron density around Chain E:

$2mF_o-DF_c$ (at 0.7 rmsd) in gray
 mF_o-DF_c (at 3 rmsd) in purple (negative)
and green (positive)





6.4 Ligands [i](#)

In the following table, the Atoms column lists the number of modelled atoms in the group and the number defined in the chemical component dictionary. The B-factors column lists the minimum, median, 95th percentile and maximum values of B factors of atoms in the group. The column labelled 'Q < 0.9' lists the number of atoms with occupancy less than 0.9.

Mol	Type	Chain	Res	Atoms	RSCC	RSR	B-factors(Å ²)	Q<0.9
5	NAG	B	2926	14/15	0.76	0.17	80,98,117,119	0
6	GOL	A	101	6/6	0.79	0.28	97,103,106,107	0
5	NAG	B	2865	14/15	0.82	0.32	88,121,132,135	0
6	GOL	B	102	6/6	0.84	0.20	71,77,84,88	0
5	NAG	A	2865	14/15	0.85	0.26	61,97,103,104	0
5	NAG	A	2926	14/15	0.87	0.17	93,101,105,106	0
5	NAG	B	2859	14/15	0.90	0.25	64,86,102,107	0

Continued on next page...

Continued from previous page...

Mol	Type	Chain	Res	Atoms	RSCC	RSR	B-factors(\AA^2)	Q<0.9
5	NAG	A	2859	14/15	0.91	0.26	76,88,92,93	0

6.5 Other polymers [i](#)

There are no such residues in this entry.