



Full wwPDB X-ray Structure Validation Report ⓘ

Jun 12, 2024 – 03:38 PM EDT

PDB ID : 3KVV
Title : Trapping of an oxocarbenium ion intermediate in UP crystals
Authors : Paul, D.; O'Leary, S.; Rajashankar, K.; Bu, W.; Toms, A.; Settembre, E.;
Sanders, J.; Begley, T.P.; Ealick, S.E.
Deposited on : 2009-11-30
Resolution : 1.80 Å(reported)

This is a Full wwPDB X-ray Structure Validation Report for a publicly released PDB entry.

We welcome your comments at validation@mail.wwpdb.org

A user guide is available at

<https://www.wwpdb.org/validation/2017/XrayValidationReportHelp>

with specific help available everywhere you see the ⓘ symbol.

The types of validation reports are described at

<http://www.wwpdb.org/validation/2017/FAQs#types>.

The following versions of software and data (see [references ⓘ](#)) were used in the production of this report:

MolProbity : 4.02b-467
Mogul : 2022.3.0, CSD as543be (2022)
Xtriage (Phenix) : 1.20.1
EDS : 2.36.2
Percentile statistics : 20191225.v01 (using entries in the PDB archive December 25th 2019)
Refmac : 5.8.0158
CCP4 : 7.0.044 (Gargrove)
Ideal geometry (proteins) : Engh & Huber (2001)
Ideal geometry (DNA, RNA) : Parkinson et al. (1996)
Validation Pipeline (wwPDB-VP) : 2.36.2

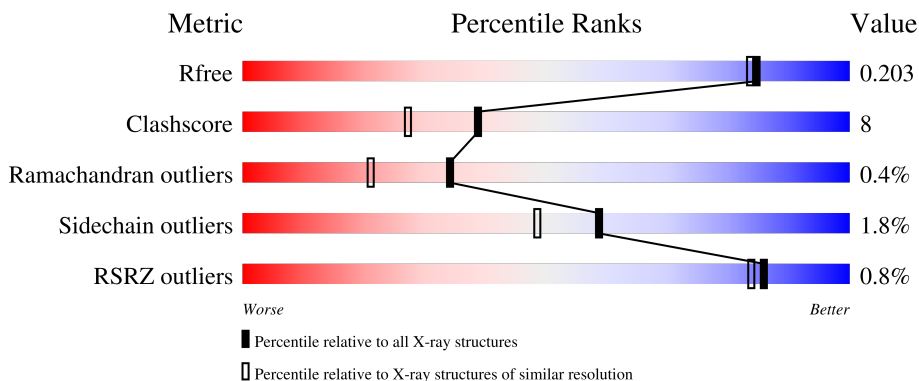
1 Overall quality at a glance i

The following experimental techniques were used to determine the structure:

X-RAY DIFFRACTION

The reported resolution of this entry is 1.80 Å.

Percentile scores (ranging between 0-100) for global validation metrics of the entry are shown in the following graphic. The table shows the number of entries on which the scores are based.



Metric	Whole archive (#Entries)	Similar resolution (#Entries, resolution range(Å))
R_{free}	130704	5950 (1.80-1.80)
Clashscore	141614	6793 (1.80-1.80)
Ramachandran outliers	138981	6697 (1.80-1.80)
Sidechain outliers	138945	6696 (1.80-1.80)
RSRZ outliers	127900	5850 (1.80-1.80)

The table below summarises the geometric issues observed across the polymeric chains and their fit to the electron density. The red, orange, yellow and green segments of the lower bar indicate the fraction of residues that contain outliers for ≥ 3 , 2, 1 and 0 types of geometric quality criteria respectively. A grey segment represents the fraction of residues that are not modelled. The numeric value for each fraction is indicated below the corresponding segment, with a dot representing fractions $\leq 5\%$. The upper red bar (where present) indicates the fraction of residues that have poor fit to the electron density. The numeric value is given above the bar.

Mol	Chain	Length	Quality of chain
1	A	253	85% 11% . .
1	B	253	84% 11% . .
1	C	253	80% 14% . 5%
1	D	253	86% 8% . 5%
1	E	253	83% 14% . .

Continued on next page...

Continued from previous page...

Mol	Chain	Length	Quality of chain
1	F	253	 % 77% 15% 6%

The following table lists non-polymeric compounds, carbohydrate monomers and non-standard residues in protein, DNA, RNA chains that are outliers for geometric or electron-density-fit criteria:

Mol	Type	Chain	Res	Chirality	Geometry	Clashes	Electron density
2	URF	A	254	-	X	-	-
2	URF	B	254	-	X	-	-
2	URF	C	254	-	X	-	-
2	URF	D	254	-	X	-	-
2	URF	E	254	-	X	-	-
2	URF	F	254	-	X	-	-

2 Entry composition [i](#)

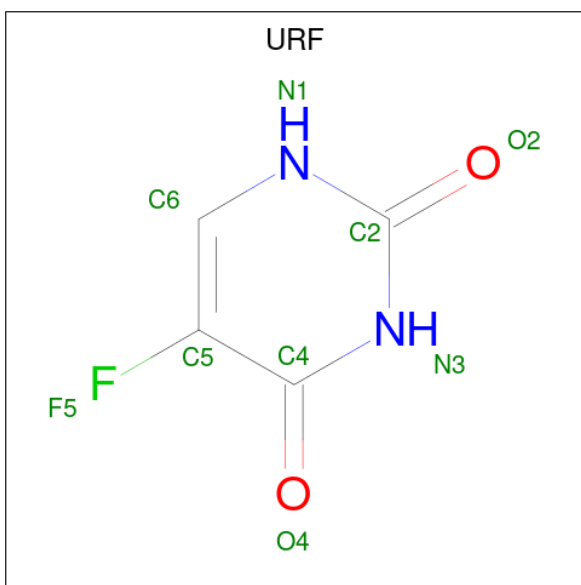
There are 5 unique types of molecules in this entry. The entry contains 11697 atoms, of which 0 are hydrogens and 0 are deuteriums.

In the tables below, the ZeroOcc column contains the number of atoms modelled with zero occupancy, the AltConf column contains the number of residues with at least one atom in alternate conformation and the Trace column contains the number of residues modelled with at most 2 atoms.

- Molecule 1 is a protein called Uridine phosphorylase.

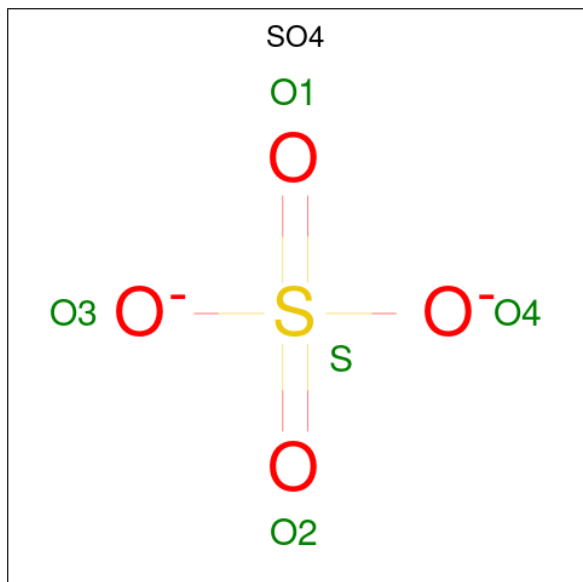
Mol	Chain	Residues	Atoms					ZeroOcc	AltConf	Trace
			Total	C	N	O	S			
1	A	243	Total 1817	C 1139	N 317	O 350	S 11	0	0	0
1	B	243	Total 1816	C 1139	N 318	O 349	S 10	0	0	0
1	C	241	Total 1802	C 1130	N 315	O 347	S 10	0	0	0
1	D	240	Total 1797	C 1127	N 314	O 346	S 10	0	0	0
1	E	247	Total 1848	C 1157	N 323	O 357	S 11	0	0	0
1	F	238	Total 1781	C 1118	N 311	O 342	S 10	0	0	0

- Molecule 2 is 5-FLUOROURACIL (three-letter code: URF) (formula: C₄H₃FN₂O₂).



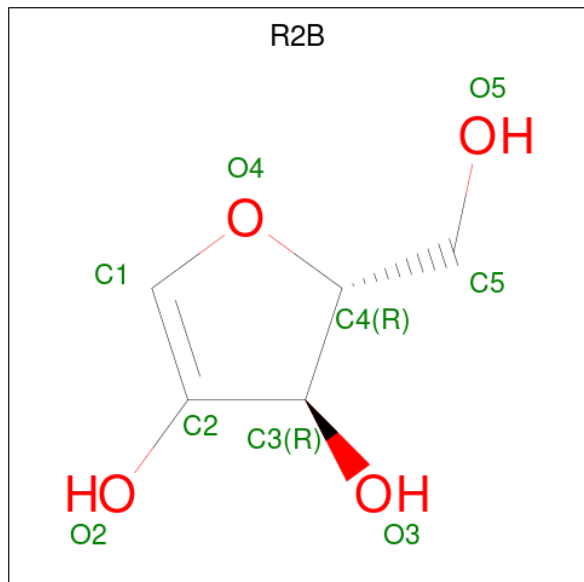
Mol	Chain	Residues	Atoms				ZeroOcc	AltConf	
2	A	1	Total	C	F	N	O	0	0
			9	4	1	2	2		
2	B	1	Total	C	F	N	O	0	0
			9	4	1	2	2		
2	C	1	Total	C	F	N	O	0	0
			9	4	1	2	2		
2	D	1	Total	C	F	N	O	0	0
			9	4	1	2	2		
2	E	1	Total	C	F	N	O	0	0
			9	4	1	2	2		
2	F	1	Total	C	F	N	O	0	0
			9	4	1	2	2		

- Molecule 3 is SULFATE ION (three-letter code: SO4) (formula: O₄S).



Mol	Chain	Residues	Atoms		ZeroOcc	AltConf
3	A	1	Total	O S	0	0
			5	4 1		
3	B	1	Total	O S	0	0
			5	4 1		
3	C	1	Total	O S	0	0
			5	4 1		
3	D	1	Total	O S	0	0
			5	4 1		
3	E	1	Total	O S	0	0
			5	4 1		
3	F	1	Total	O S	0	0
			5	4 1		

- Molecule 4 is 1,4-anhydro-D-erythro-pent-1-enitol (three-letter code: R2B) (formula: $C_5H_8O_4$).



Mol	Chain	Residues	Atoms	ZeroOcc	AltConf
4	A	1	Total C O 9 5 4	0	0
4	B	1	Total C O 9 5 4	0	0
4	C	1	Total C O 9 5 4	0	0
4	D	1	Total C O 9 5 4	0	0
4	E	1	Total C O 9 5 4	0	0
4	F	1	Total C O 9 5 4	0	0

- Molecule 5 is water.

Mol	Chain	Residues	Atoms	ZeroOcc	AltConf
5	A	133	Total O 133 133	0	0
5	B	143	Total O 143 143	0	0
5	C	115	Total O 115 115	0	0
5	D	117	Total O 117 117	0	0

Continued on next page...

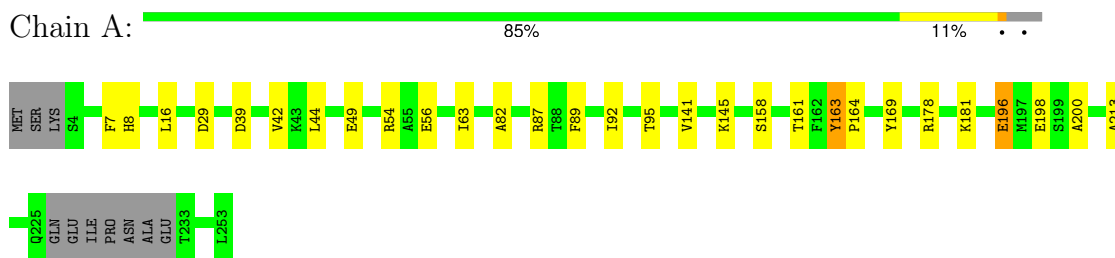
Continued from previous page...

Mol	Chain	Residues	Atoms	ZeroOcc	AltConf
5	E	94	Total O 94 94	0	0
5	F	96	Total O 96 96	0	0

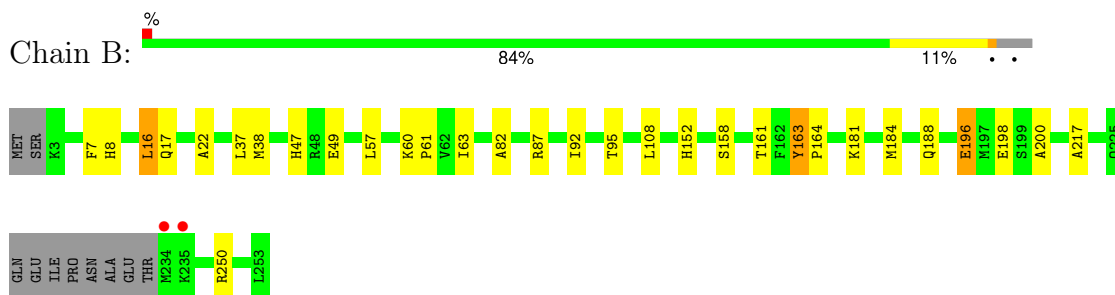
3 Residue-property plots

These plots are drawn for all protein, RNA, DNA and oligosaccharide chains in the entry. The first graphic for a chain summarises the proportions of the various outlier classes displayed in the second graphic. The second graphic shows the sequence view annotated by issues in geometry and electron density. Residues are color-coded according to the number of geometric quality criteria for which they contain at least one outlier: green = 0, yellow = 1, orange = 2 and red = 3 or more. A red dot above a residue indicates a poor fit to the electron density ($RSRZ > 2$). Stretches of 2 or more consecutive residues without any outlier are shown as a green connector. Residues present in the sample, but not in the model, are shown in grey.

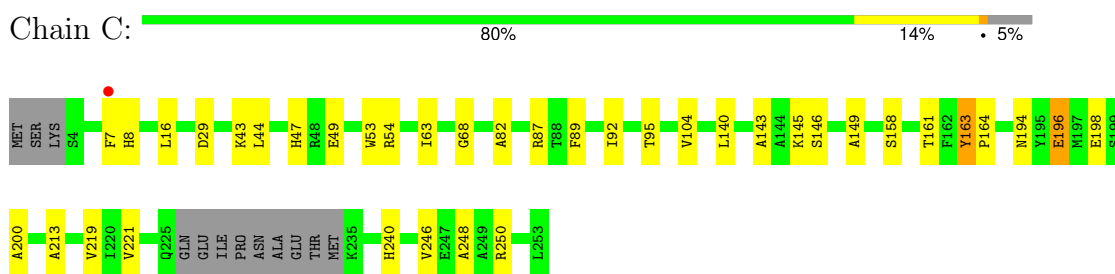
- Molecule 1: Uridine phosphorylase



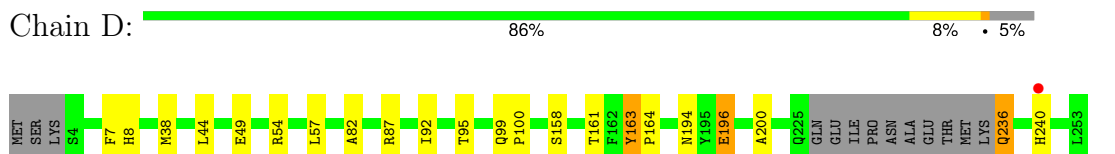
- Molecule 1: Uridine phosphorylase




- Molecule 1: Uridine phosphorylase

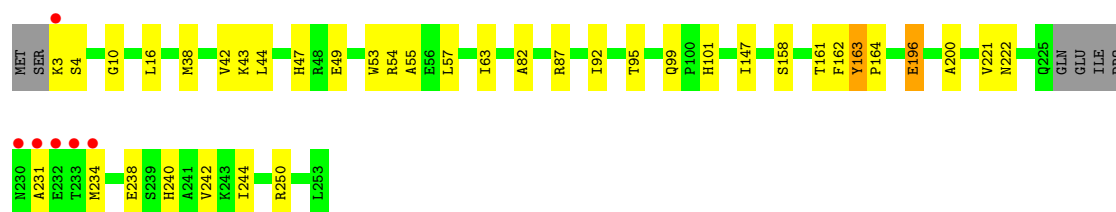


- Molecule 1: Uridine phosphorylase




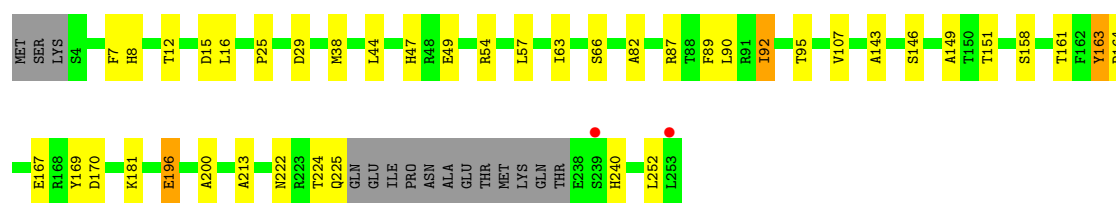
- Molecule 1: Uridine phosphorylase

Chain E:  2% 83% 14%



- Molecule 1: Uridine phosphorylase

Chain F:  1% 77% 15% 6%



4 Data and refinement statistics i

Property	Value	Source
Space group	P 32	Depositor
Cell constants a, b, c, α , β , γ	92.86Å 92.86Å 145.02Å 90.00° 90.00° 120.00°	Depositor
Resolution (Å)	23.52 – 1.80 28.03 – 1.80	Depositor EDS
% Data completeness (in resolution range)	93.5 (23.52-1.80) 95.5 (28.03-1.80)	Depositor EDS
R_{merge}	(Not available)	Depositor
R_{sym}	(Not available)	Depositor
$\langle I/\sigma(I) \rangle$ ¹	2.50 (at 1.80Å)	Xtrriage
Refinement program	PHENIX 1.5_2, CNS	Depositor
R, R_{free}	0.173 , 0.205 0.171 , 0.203	Depositor DCC
R_{free} test set	6119 reflections (4.97%)	wwPDB-VP
Wilson B-factor (Å ²)	20.9	Xtrriage
Anisotropy	0.073	Xtrriage
Bulk solvent k_{sol} (e/Å ³), B_{sol} (Å ²)	0.37 , 36.4	EDS
L-test for twinning ²	$\langle L \rangle = 0.46$, $\langle L^2 \rangle = 0.28$	Xtrriage
Estimated twinning fraction	0.024 for -h,-k,l 0.084 for h,-h-k,-l 0.028 for -k,-h,-l	Xtrriage
F_o, F_c correlation	0.96	EDS
Total number of atoms	11697	wwPDB-VP
Average B, all atoms (Å ²)	24.0	wwPDB-VP

Xtrriage's analysis on translational NCS is as follows: *The largest off-origin peak in the Patterson function is 3.64% of the height of the origin peak. No significant pseudotranslation is detected.*

¹Intensities estimated from amplitudes.

²Theoretical values of $\langle |L| \rangle$, $\langle L^2 \rangle$ for acentric reflections are 0.5, 0.333 respectively for untwinned datasets, and 0.375, 0.2 for perfectly twinned datasets.

5 Model quality [i](#)

5.1 Standard geometry [i](#)

Bond lengths and bond angles in the following residue types are not validated in this section: URF, SO4, R2B

The Z score for a bond length (or angle) is the number of standard deviations the observed value is removed from the expected value. A bond length (or angle) with $|Z| > 5$ is considered an outlier worth inspection. RMSZ is the root-mean-square of all Z scores of the bond lengths (or angles).

Mol	Chain	Bond lengths		Bond angles	
		RMSZ	# Z >5	RMSZ	# Z >5
1	A	0.39	0/1847	0.56	0/2507
1	B	0.39	0/1846	0.56	0/2505
1	C	0.37	0/1832	0.56	0/2487
1	D	0.38	0/1827	0.55	0/2480
1	E	0.34	0/1878	0.54	0/2548
1	F	0.34	0/1811	0.53	0/2458
All	All	0.37	0/11041	0.55	0/14985

There are no bond length outliers.

There are no bond angle outliers.

There are no chirality outliers.

There are no planarity outliers.

5.2 Too-close contacts [i](#)

In the following table, the Non-H and H(model) columns list the number of non-hydrogen atoms and hydrogen atoms in the chain respectively. The H(added) column lists the number of hydrogen atoms added and optimized by MolProbity. The Clashes column lists the number of clashes within the asymmetric unit, whereas Symm-Clashes lists symmetry-related clashes.

Mol	Chain	Non-H	H(model)	H(added)	Clashes	Symm-Clashes
1	A	1817	0	1813	20	0
1	B	1816	0	1812	26	0
1	C	1802	0	1797	31	0
1	D	1797	0	1795	20	0
1	E	1848	0	1843	32	0
1	F	1781	0	1780	32	0
2	A	9	0	3	1	0

Continued on next page...

Continued from previous page...

Mol	Chain	Non-H	H(model)	H(added)	Clashes	Symm-Clashes
2	B	9	0	3	1	0
2	C	9	0	3	1	0
2	D	9	0	3	1	0
2	E	9	0	3	1	0
2	F	9	0	3	1	0
3	A	5	0	0	0	0
3	B	5	0	0	0	0
3	C	5	0	0	0	0
3	D	5	0	0	0	0
3	E	5	0	0	0	0
3	F	5	0	0	0	0
4	A	9	0	0	2	0
4	B	9	0	0	2	0
4	C	9	0	0	2	0
4	D	9	0	0	1	0
4	E	9	0	0	1	0
4	F	9	0	0	1	0
5	A	133	0	0	2	0
5	B	143	0	0	5	0
5	C	115	0	0	7	0
5	D	117	0	0	1	0
5	E	94	0	0	3	0
5	F	96	0	0	1	0
All	All	11697	0	10858	164	0

The all-atom clashscore is defined as the number of clashes found per 1000 atoms (including hydrogen atoms). The all-atom clashscore for this structure is 8.

All (164) close contacts within the same asymmetric unit are listed below, sorted by their clash magnitude.

Atom-1	Atom-2	Interatomic distance (Å)	Clash overlap (Å)
1:B:161:THR:HG21	1:B:164:PRO:HD2	1.30	1.07
1:C:161:THR:HG21	1:C:164:PRO:HD2	1.39	1.02
1:D:161:THR:HG21	1:D:164:PRO:HD2	1.42	1.02
1:E:161:THR:HG21	1:E:164:PRO:HD2	1.44	1.00
1:A:161:THR:HG21	1:A:164:PRO:HD2	1.45	0.97
1:F:161:THR:HG21	1:F:164:PRO:HD2	1.46	0.95
2:E:254:URF:HN1	4:E:256:R2B:C1	1.82	0.92
1:F:95:THR:HG22	1:F:196:GLU:HB3	1.52	0.92
1:A:161:THR:HG23	5:B:263:HOH:O	1.73	0.89
1:D:95:THR:HG22	1:D:196:GLU:HB3	1.53	0.89

Continued on next page...

Continued from previous page...

Atom-1	Atom-2	Interatomic distance (Å)	Clash overlap (Å)
1:B:161:THR:HG22	1:B:163:TYR:H	1.37	0.87
1:C:95:THR:HG22	1:C:196:GLU:HB3	1.55	0.86
2:F:254:URF:HN1	4:F:256:R2B:C1	1.89	0.85
2:D:254:URF:HN1	4:D:256:R2B:C1	1.90	0.84
1:A:95:THR:HG22	1:A:196:GLU:HB3	1.57	0.84
1:B:161:THR:CG2	1:B:164:PRO:HD2	2.07	0.83
1:A:161:THR:HG22	1:A:163:TYR:H	1.44	0.83
5:A:269:HOH:O	1:B:161:THR:HG23	1.79	0.82
1:B:95:THR:HG22	1:B:196:GLU:HB3	1.60	0.82
1:C:161:THR:HG22	1:C:163:TYR:H	1.43	0.81
1:C:161:THR:HG23	5:D:263:HOH:O	1.80	0.80
2:A:254:URF:HN1	4:A:256:R2B:C1	1.96	0.78
1:D:161:THR:HG21	1:D:164:PRO:CD	2.12	0.78
1:E:95:THR:HG22	1:E:196:GLU:HB3	1.66	0.78
1:B:161:THR:HG21	1:B:164:PRO:CD	2.13	0.77
1:E:161:THR:HG21	1:E:164:PRO:CD	2.13	0.76
1:E:161:THR:CG2	1:E:164:PRO:HD2	2.14	0.76
1:F:161:THR:CG2	1:F:164:PRO:HD2	2.15	0.76
1:C:161:THR:CG2	1:C:164:PRO:HD2	2.17	0.75
1:E:161:THR:HG23	5:E:274:HOH:O	1.87	0.74
1:D:161:THR:CG2	1:D:164:PRO:HD2	2.16	0.72
1:F:161:THR:HG21	1:F:164:PRO:CD	2.18	0.72
1:A:161:THR:CG2	1:A:164:PRO:HD2	2.20	0.72
1:C:161:THR:HG22	1:C:163:TYR:N	2.05	0.71
1:B:161:THR:HG22	1:B:163:TYR:N	2.05	0.71
1:C:161:THR:HG21	1:C:164:PRO:CD	2.20	0.69
1:E:38:MET:HG2	1:E:57:LEU:HD13	1.75	0.69
1:E:44:LEU:HD11	1:E:54:ARG:HB2	1.75	0.69
1:C:219:VAL:HG12	5:C:295:HOH:O	1.92	0.69
2:C:254:URF:HN1	4:C:256:R2B:C1	2.06	0.68
2:B:254:URF:HN1	4:B:256:R2B:C1	2.07	0.68
1:A:7:PHE:HD2	1:A:8:HIS:CE1	2.13	0.67
1:C:82:ALA:O	1:C:87:ARG:NH2	2.28	0.66
1:C:47:HIS:HE1	5:C:300:HOH:O	1.79	0.65
1:D:161:THR:HG22	1:D:163:TYR:N	2.12	0.64
1:D:7:PHE:HD2	1:D:8:HIS:CE1	2.15	0.63
1:A:161:THR:HG22	1:A:163:TYR:N	2.12	0.63
1:D:161:THR:HG22	1:D:163:TYR:H	1.65	0.62
1:C:7:PHE:HD2	1:C:8:HIS:CE1	2.18	0.62
1:F:82:ALA:O	1:F:87:ARG:NH2	2.33	0.61
5:C:289:HOH:O	1:D:161:THR:HG23	2.00	0.61

Continued on next page...

Continued from previous page...

Atom-1	Atom-2	Interatomic distance (Å)	Clash overlap (Å)
1:E:3:LYS:NZ	1:E:3:LYS:HB3	2.16	0.61
1:A:82:ALA:O	1:A:87:ARG:NH2	2.34	0.60
1:F:7:PHE:HD2	1:F:8:HIS:CE1	2.19	0.60
1:E:47:HIS:HE1	5:E:359:HOH:O	1.84	0.60
1:B:181:LYS:HE3	5:B:496:HOH:O	2.00	0.60
1:C:104:VAL:HG22	5:C:295:HOH:O	2.02	0.60
1:B:47:HIS:HE1	5:B:315:HOH:O	1.84	0.59
1:E:82:ALA:O	1:E:87:ARG:NH2	2.35	0.59
1:F:222:ASN:HB3	1:F:225:GLN:HB2	1.85	0.58
5:E:263:HOH:O	1:F:161:THR:HG23	2.02	0.58
1:B:158:SER:HB3	1:B:200:ALA:HB2	1.85	0.57
1:C:158:SER:HB3	1:C:200:ALA:HB2	1.87	0.57
1:D:82:ALA:O	1:D:87:ARG:NH2	2.37	0.57
1:B:198:GLU:OE1	4:B:256:R2B:O2	2.22	0.57
1:F:38:MET:HG2	1:F:57:LEU:HD13	1.87	0.56
1:F:169:TYR:OH	1:F:181:LYS:HD2	2.06	0.55
1:E:16:LEU:HD22	1:E:63:ILE:HD11	1.88	0.55
1:F:143:ALA:O	1:F:146:SER:HB3	2.06	0.55
1:A:42:VAL:HG11	1:A:54:ARG:NH2	2.22	0.55
1:D:158:SER:HB3	1:D:200:ALA:HB2	1.89	0.55
1:F:161:THR:HG22	1:F:163:TYR:N	2.21	0.55
1:F:161:THR:HG22	1:F:163:TYR:H	1.72	0.54
1:F:92:ILE:C	1:F:92:ILE:HD13	2.28	0.54
1:E:161:THR:HG22	1:E:163:TYR:N	2.22	0.54
1:C:161:THR:CG2	1:C:163:TYR:H	2.19	0.53
1:B:161:THR:CG2	1:B:163:TYR:H	2.17	0.53
1:A:161:THR:HG21	1:A:164:PRO:CD	2.31	0.53
1:D:95:THR:HG21	1:D:194:ASN:HD22	1.74	0.53
1:D:161:THR:CG2	1:D:163:TYR:H	2.21	0.53
1:F:90:LEU:HD11	1:F:252:LEU:HD12	1.91	0.53
1:E:42:VAL:HG11	1:E:54:ARG:NH2	2.24	0.52
1:A:141:VAL:O	1:A:145:LYS:HG2	2.10	0.52
1:F:16:LEU:HD22	1:F:63:ILE:HD11	1.90	0.52
1:F:158:SER:HB3	1:F:200:ALA:HB2	1.92	0.52
1:F:149:ALA:HB2	1:F:240:HIS:HE1	1.75	0.52
1:A:49:GLU:HB3	1:B:49:GLU:HB3	1.92	0.52
1:B:82:ALA:O	1:B:87:ARG:NH2	2.42	0.52
1:F:149:ALA:HB2	1:F:240:HIS:CE1	2.45	0.52
1:A:44:LEU:HD11	1:A:54:ARG:HB2	1.92	0.51
1:C:149:ALA:HB2	1:C:240:HIS:CE1	2.45	0.51
1:E:163:TYR:HB2	1:E:164:PRO:CD	2.41	0.51

Continued on next page...

Continued from previous page...

Atom-1	Atom-2	Interatomic distance (Å)	Clash overlap (Å)
1:A:198:GLU:OE1	4:A:256:R2B:O2	2.28	0.50
1:A:158:SER:HB3	1:A:200:ALA:HB2	1.93	0.50
1:E:238:GLU:O	1:E:242:VAL:HG23	2.12	0.50
1:D:44:LEU:HD11	1:D:54:ARG:HB2	1.93	0.49
1:E:231:ALA:HA	1:E:234:MET:HE2	1.95	0.49
1:E:161:THR:HG22	1:E:163:TYR:H	1.76	0.49
1:C:43:LYS:HB2	1:C:53:TRP:CE2	2.48	0.49
1:B:60:LYS:HG3	5:B:502:HOH:O	2.12	0.49
1:A:16:LEU:HD22	1:A:63:ILE:HD11	1.94	0.49
1:F:16:LEU:HD22	1:F:63:ILE:CD1	2.43	0.48
1:D:38:MET:HG2	1:D:57:LEU:HD13	1.95	0.48
1:F:167:GLU:HG2	1:F:169:TYR:CE1	2.49	0.48
1:B:7:PHE:HD2	1:B:8:HIS:CE1	2.32	0.47
1:A:39:ASP:HB2	1:A:56:GLU:HB3	1.96	0.47
1:C:16:LEU:HD22	1:C:63:ILE:HD11	1.97	0.47
1:E:158:SER:HB3	1:E:200:ALA:HB2	1.95	0.47
1:B:17:GLN:O	1:B:61:PRO:HG3	2.15	0.46
1:C:246:VAL:O	1:C:250:ARG:HG3	2.16	0.46
1:F:163:TYR:HB2	1:F:164:PRO:CD	2.46	0.46
1:C:221:VAL:N	5:C:295:HOH:O	2.49	0.46
1:E:57:LEU:HG	1:E:250:ARG:HG2	1.98	0.46
1:E:231:ALA:HA	1:E:234:MET:CE	2.46	0.45
1:B:95:THR:HG23	1:B:217:ALA:HB1	1.99	0.45
1:C:49:GLU:HG3	1:C:68:GLY:HA3	1.98	0.45
1:B:57:LEU:HG	1:B:250:ARG:HG2	1.99	0.45
1:C:104:VAL:HG13	5:C:295:HOH:O	2.17	0.45
1:B:38:MET:HG2	1:B:57:LEU:HD13	1.99	0.45
1:E:3:LYS:HB3	1:E:3:LYS:HZ2	1.82	0.45
1:A:169:TYR:OH	1:A:181:LYS:HE3	2.17	0.44
1:E:161:THR:CG2	1:E:163:TYR:H	2.30	0.44
1:E:147:ILE:HD13	1:E:244:ILE:HG13	1.99	0.44
1:B:17:GLN:HG2	5:B:377:HOH:O	2.17	0.44
1:F:224:THR:OG1	1:F:225:GLN:N	2.51	0.44
1:D:95:THR:HG21	1:D:194:ASN:ND2	2.33	0.43
1:C:89:PHE:O	1:C:213:ALA:HA	2.19	0.42
1:E:161:THR:HG21	1:E:164:PRO:CG	2.48	0.42
1:C:16:LEU:HD22	1:C:63:ILE:CD1	2.50	0.42
1:C:104:VAL:HA	5:C:295:HOH:O	2.20	0.42
1:E:49:GLU:HB3	1:F:49:GLU:HB3	2.01	0.42
1:B:184:MET:O	1:B:188:GLN:HG3	2.19	0.42
1:A:178:ARG:NH1	5:A:469:HOH:O	2.52	0.42

Continued on next page...

Continued from previous page...

Atom-1	Atom-2	Interatomic distance (Å)	Clash overlap (Å)
1:C:198:GLU:OE1	4:C:256:R2B:O2	2.36	0.42
1:E:221:VAL:HG22	1:E:222:ASN:N	2.35	0.42
1:C:44:LEU:HD11	1:C:54:ARG:HB2	2.02	0.41
1:E:43:LYS:HB2	1:E:53:TRP:CZ2	2.55	0.41
1:E:54:ARG:HG2	1:E:55:ALA:N	2.35	0.41
1:A:89:PHE:O	1:A:213:ALA:HA	2.19	0.41
1:E:163:TYR:CB	1:E:164:PRO:CD	2.98	0.41
1:C:145:LYS:HE3	1:C:145:LYS:HB2	1.88	0.41
1:C:49:GLU:HB3	1:D:49:GLU:HB3	2.02	0.41
1:D:163:TYR:HB2	1:D:164:PRO:CD	2.50	0.41
1:F:107:VAL:HG23	1:F:151:THR:HG23	2.02	0.41
1:C:140:LEU:HD23	1:C:248:ALA:CB	2.51	0.41
1:B:16:LEU:HD13	1:B:63:ILE:HG13	2.03	0.41
1:E:4:SER:HB3	1:E:10:GLY:HA2	2.03	0.41
1:F:44:LEU:HD11	1:F:54:ARG:HB2	2.03	0.41
1:F:89:PHE:O	1:F:213:ALA:HA	2.20	0.41
1:F:161:THR:HG21	1:F:164:PRO:CG	2.51	0.41
1:C:143:ALA:O	1:C:146:SER:HB3	2.21	0.41
1:D:161:THR:HG21	1:D:164:PRO:CG	2.50	0.40
1:B:108:LEU:HD22	1:B:152:HIS:HB2	2.02	0.40
1:B:22:ALA:HA	1:B:63:ILE:O	2.21	0.40
1:C:95:THR:HG21	1:C:194:ASN:HD22	1.86	0.40
1:E:161:THR:CG2	1:E:162:PHE:N	2.85	0.40
1:F:12:THR:O	1:F:15:ASP:HB2	2.22	0.40
1:F:47:HIS:HE1	5:F:315:HOH:O	2.04	0.40
1:F:163:TYR:CB	1:F:164:PRO:CD	2.99	0.40
1:B:163:TYR:HB2	1:B:164:PRO:CD	2.51	0.40
1:F:25:PRO:O	1:F:66:SER:HA	2.20	0.40
1:D:99:GLN:HA	1:D:100:PRO:HD3	1.92	0.40
1:D:236:GLN:N	1:D:236:GLN:OE1	2.54	0.40
1:E:99:GLN:HB3	1:E:101:HIS:CD2	2.57	0.40

There are no symmetry-related clashes.

5.3 Torsion angles

5.3.1 Protein backbone

In the following table, the Percentiles column shows the percent Ramachandran outliers of the chain as a percentile score with respect to all X-ray entries followed by that with respect to entries of similar resolution.

The Analysed column shows the number of residues for which the backbone conformation was analysed, and the total number of residues.

Mol	Chain	Analysed	Favoured	Allowed	Outliers	Percentiles	
1	A	239/253 (94%)	237 (99%)	1 (0%)	1 (0%)	34	21
1	B	239/253 (94%)	237 (99%)	1 (0%)	1 (0%)	34	21
1	C	237/253 (94%)	235 (99%)	1 (0%)	1 (0%)	34	21
1	D	236/253 (93%)	233 (99%)	2 (1%)	1 (0%)	34	21
1	E	243/253 (96%)	240 (99%)	2 (1%)	1 (0%)	34	21
1	F	234/253 (92%)	229 (98%)	4 (2%)	1 (0%)	34	21
All	All	1428/1518 (94%)	1411 (99%)	11 (1%)	6 (0%)	34	21

All (6) Ramachandran outliers are listed below:

Mol	Chain	Res	Type
1	B	163	TYR
1	D	163	TYR
1	A	163	TYR
1	C	163	TYR
1	F	163	TYR
1	E	163	TYR

5.3.2 Protein sidechains [i](#)

In the following table, the Percentiles column shows the percent sidechain outliers of the chain as a percentile score with respect to all X-ray entries followed by that with respect to entries of similar resolution.

The Analysed column shows the number of residues for which the sidechain conformation was analysed, and the total number of residues.

Mol	Chain	Analysed	Rotameric	Outliers	Percentiles	
1	A	193/204 (95%)	190 (98%)	3 (2%)	62	54
1	B	192/204 (94%)	188 (98%)	4 (2%)	53	42
1	C	191/204 (94%)	188 (98%)	3 (2%)	62	54
1	D	191/204 (94%)	187 (98%)	4 (2%)	53	42
1	E	196/204 (96%)	193 (98%)	3 (2%)	65	56
1	F	189/204 (93%)	185 (98%)	4 (2%)	53	42
All	All	1152/1224 (94%)	1131 (98%)	21 (2%)	59	48

All (21) residues with a non-rotameric sidechain are listed below:

Mol	Chain	Res	Type
1	A	29	ASP
1	A	92	ILE
1	A	196	GLU
1	B	16	LEU
1	B	37	LEU
1	B	92	ILE
1	B	196	GLU
1	C	29	ASP
1	C	92	ILE
1	C	196	GLU
1	D	92	ILE
1	D	196	GLU
1	D	236	GLN
1	D	240	HIS
1	E	92	ILE
1	E	196	GLU
1	E	240	HIS
1	F	29	ASP
1	F	92	ILE
1	F	170	ASP
1	F	196	GLU

Sometimes sidechains can be flipped to improve hydrogen bonding and reduce clashes. All (20) such sidechains are listed below:

Mol	Chain	Res	Type
1	A	17	GLN
1	A	101	HIS
1	B	17	GLN
1	B	47	HIS
1	B	101	HIS
1	C	17	GLN
1	C	47	HIS
1	C	101	HIS
1	C	240	HIS
1	D	17	GLN
1	D	47	HIS
1	D	101	HIS
1	D	236	GLN
1	E	17	GLN
1	E	101	HIS
1	E	236	GLN

Continued on next page...

Continued from previous page...

Mol	Chain	Res	Type
1	F	17	GLN
1	F	47	HIS
1	F	101	HIS
1	F	240	HIS

5.3.3 RNA [i](#)

There are no RNA molecules in this entry.

5.4 Non-standard residues in protein, DNA, RNA chains [i](#)

There are no non-standard protein/DNA/RNA residues in this entry.

5.5 Carbohydrates [i](#)

There are no monosaccharides in this entry.

5.6 Ligand geometry [i](#)

18 ligands are modelled in this entry.

In the following table, the Counts columns list the number of bonds (or angles) for which Mogul statistics could be retrieved, the number of bonds (or angles) that are observed in the model and the number of bonds (or angles) that are defined in the Chemical Component Dictionary. The Link column lists molecule types, if any, to which the group is linked. The Z score for a bond length (or angle) is the number of standard deviations the observed value is removed from the expected value. A bond length (or angle) with $|Z| > 2$ is considered an outlier worth inspection. RMSZ is the root-mean-square of all Z scores of the bond lengths (or angles).

Mol	Type	Chain	Res	Link	Bond lengths			Bond angles		
					Counts	RMSZ	# $ Z > 2$	Counts	RMSZ	# $ Z > 2$
2	URF	E	254	-	9,9,9	2.98	4 (44%)	12,12,12	4.06	9 (75%)
2	URF	C	254	-	9,9,9	3.00	4 (44%)	12,12,12	4.08	9 (75%)
3	SO4	B	255	-	4,4,4	0.35	0	6,6,6	0.12	0
3	SO4	D	255	-	4,4,4	0.40	0	6,6,6	0.15	0
3	SO4	E	255	-	4,4,4	0.37	0	6,6,6	0.14	0
2	URF	D	254	-	9,9,9	2.97	4 (44%)	12,12,12	4.04	9 (75%)
4	R2B	A	256	-	5,9,9	0.40	0	5,12,12	3.12	2 (40%)
3	SO4	A	255	-	4,4,4	0.34	0	6,6,6	0.14	0
3	SO4	C	255	-	4,4,4	0.36	0	6,6,6	0.15	0

Mol	Type	Chain	Res	Link	Bond lengths			Bond angles		
					Counts	RMSZ	# Z > 2	Counts	RMSZ	# Z > 2
2	URF	A	254	-	9,9,9	3.00	4 (44%)	12,12,12	3.98	8 (66%)
3	SO4	F	255	-	4,4,4	0.34	0	6,6,6	0.16	0
2	URF	B	254	-	9,9,9	3.01	4 (44%)	12,12,12	4.00	8 (66%)
4	R2B	D	256	-	5,9,9	0.38	0	5,12,12	3.07	2 (40%)
4	R2B	F	256	-	5,9,9	0.53	0	5,12,12	3.39	2 (40%)
4	R2B	E	256	-	5,9,9	0.50	0	5,12,12	2.95	2 (40%)
4	R2B	B	256	-	5,9,9	0.29	0	5,12,12	3.38	4 (80%)
2	URF	F	254	-	9,9,9	2.97	4 (44%)	12,12,12	4.03	9 (75%)
4	R2B	C	256	-	5,9,9	0.40	0	5,12,12	3.21	3 (60%)

In the following table, the Chirals column lists the number of chiral outliers, the number of chiral centers analysed, the number of these observed in the model and the number defined in the Chemical Component Dictionary. Similar counts are reported in the Torsion and Rings columns. '-' means no outliers of that kind were identified.

Mol	Type	Chain	Res	Link	Chirals	Torsions	Rings
2	URF	E	254	-	-	-	0/1/1/1
2	URF	C	254	-	-	-	0/1/1/1
2	URF	F	254	-	-	-	0/1/1/1
2	URF	D	254	-	-	-	0/1/1/1
4	R2B	A	256	-	-	0/2/15/15	0/1/1/1
2	URF	A	254	-	-	-	0/1/1/1
4	R2B	F	256	-	-	0/2/15/15	0/1/1/1
2	URF	B	254	-	-	-	0/1/1/1
4	R2B	E	256	-	-	0/2/15/15	0/1/1/1
4	R2B	B	256	-	-	0/2/15/15	0/1/1/1
4	R2B	C	256	-	-	0/2/15/15	0/1/1/1
4	R2B	D	256	-	-	0/2/15/15	0/1/1/1

All (24) bond length outliers are listed below:

Mol	Chain	Res	Type	Atoms	Z	Observed(Å)	Ideal(Å)
2	A	254	URF	C6-C5	6.80	1.39	1.33
2	B	254	URF	C6-C5	6.76	1.39	1.33
2	C	254	URF	C6-C5	6.76	1.39	1.33
2	F	254	URF	C6-C5	6.71	1.39	1.33
2	E	254	URF	C6-C5	6.69	1.39	1.33
2	D	254	URF	C6-C5	6.65	1.39	1.33
2	C	254	URF	C4-C5	-3.88	1.39	1.44
2	B	254	URF	C4-C5	-3.85	1.39	1.44

Continued on next page...

Continued from previous page...

Mol	Chain	Res	Type	Atoms	Z	Observed(Å)	Ideal(Å)
2	D	254	URF	C4-C5	-3.85	1.39	1.44
2	A	254	URF	C4-C5	-3.83	1.39	1.44
2	E	254	URF	C4-C5	-3.78	1.39	1.44
2	F	254	URF	C4-C5	-3.78	1.39	1.44
2	B	254	URF	C2-N1	3.05	1.40	1.36
2	E	254	URF	C2-N1	3.01	1.40	1.36
2	F	254	URF	C2-N1	2.96	1.40	1.36
2	C	254	URF	C2-N1	2.94	1.40	1.36
2	A	254	URF	C2-N1	2.94	1.40	1.36
2	D	254	URF	C2-N1	2.92	1.40	1.36
2	B	254	URF	C6-N1	2.67	1.40	1.36
2	C	254	URF	C6-N1	2.63	1.40	1.36
2	F	254	URF	C6-N1	2.62	1.40	1.36
2	D	254	URF	C6-N1	2.62	1.40	1.36
2	E	254	URF	C6-N1	2.61	1.40	1.36
2	A	254	URF	C6-N1	2.60	1.40	1.36

All (67) bond angle outliers are listed below:

Mol	Chain	Res	Type	Atoms	Z	Observed(°)	Ideal(°)
2	C	254	URF	C5-C4-N3	8.48	120.40	112.64
2	E	254	URF	C5-C4-N3	8.47	120.38	112.64
2	A	254	URF	C5-C4-N3	8.46	120.38	112.64
2	F	254	URF	C5-C4-N3	8.46	120.38	112.64
2	D	254	URF	C5-C4-N3	8.43	120.35	112.64
2	B	254	URF	C5-C4-N3	8.37	120.29	112.64
2	B	254	URF	O4-C4-C5	-7.03	119.70	125.69
2	D	254	URF	O4-C4-C5	-6.84	119.86	125.69
2	E	254	URF	O4-C4-C5	-6.75	119.94	125.69
4	F	256	R2B	C4-O4-C1	6.73	111.58	106.25
2	F	254	URF	O4-C4-C5	-6.71	119.98	125.69
2	A	254	URF	O4-C4-C5	-6.67	120.01	125.69
2	C	254	URF	O4-C4-C5	-6.66	120.02	125.69
4	A	256	R2B	C4-O4-C1	6.03	111.03	106.25
4	D	256	R2B	C4-O4-C1	5.97	110.98	106.25
4	B	256	R2B	C4-O4-C1	5.95	110.97	106.25
4	E	256	R2B	C4-O4-C1	5.93	110.95	106.25
4	C	256	R2B	C4-O4-C1	5.92	110.94	106.25
2	C	254	URF	C4-N3-C2	-4.53	120.13	126.37
2	D	254	URF	C4-N3-C2	-4.50	120.18	126.37
2	F	254	URF	C4-N3-C2	-4.49	120.18	126.37
2	E	254	URF	C4-N3-C2	-4.48	120.20	126.37

Continued on next page...

Continued from previous page...

Mol	Chain	Res	Type	Atoms	Z	Observed(°)	Ideal(°)
2	A	254	URF	C4-N3-C2	-4.46	120.22	126.37
2	C	254	URF	F5-C5-C4	4.46	120.38	116.47
2	B	254	URF	C4-N3-C2	-4.44	120.26	126.37
2	E	254	URF	F5-C5-C4	4.40	120.33	116.47
2	F	254	URF	F5-C5-C4	4.24	120.19	116.47
2	D	254	URF	F5-C5-C4	4.19	120.14	116.47
2	A	254	URF	F5-C5-C4	4.09	120.06	116.47
2	B	254	URF	N1-C2-N3	3.86	119.24	115.17
2	C	254	URF	N1-C2-N3	3.86	119.24	115.17
2	F	254	URF	N1-C2-N3	3.81	119.18	115.17
2	D	254	URF	N1-C2-N3	3.78	119.16	115.17
2	E	254	URF	N1-C2-N3	3.76	119.14	115.17
2	A	254	URF	N1-C2-N3	3.73	119.10	115.17
2	B	254	URF	F5-C5-C4	3.70	119.72	116.47
4	B	256	R2B	O4-C4-C5	3.09	112.57	108.37
4	F	256	R2B	O2-C2-C3	2.96	125.52	117.99
2	B	254	URF	C6-N1-C2	-2.86	120.03	122.69
2	E	254	URF	C6-C5-C4	-2.82	119.68	122.11
2	A	254	URF	C6-C5-C4	-2.79	119.71	122.11
2	C	254	URF	C6-C5-C4	-2.78	119.72	122.11
2	F	254	URF	C6-C5-C4	-2.76	119.73	122.11
4	A	256	R2B	O2-C2-C3	2.76	125.02	117.99
2	B	254	URF	C6-C5-C4	-2.75	119.75	122.11
2	D	254	URF	C6-C5-C4	-2.73	119.76	122.11
2	C	254	URF	C6-N1-C2	-2.72	120.17	122.69
2	E	254	URF	C6-N1-C2	-2.66	120.22	122.69
2	F	254	URF	C6-N1-C2	-2.66	120.22	122.69
2	D	254	URF	C6-N1-C2	-2.63	120.25	122.69
2	A	254	URF	C6-N1-C2	-2.56	120.31	122.69
4	B	256	R2B	O2-C2-C3	2.50	124.36	117.99
4	D	256	R2B	O2-C2-C3	2.45	124.22	117.99
4	E	256	R2B	O2-C2-C3	2.42	124.15	117.99
2	E	254	URF	O2-C2-N1	-2.36	120.35	122.79
2	C	254	URF	O2-C2-N1	-2.36	120.35	122.79
2	C	254	URF	F5-C5-C6	-2.34	119.86	121.58
4	C	256	R2B	C5-C4-C3	-2.30	110.92	115.11
2	D	254	URF	O2-C2-N1	-2.29	120.43	122.79
4	B	256	R2B	C5-C4-C3	-2.28	110.96	115.11
4	C	256	R2B	O2-C2-C3	2.25	123.71	117.99
2	F	254	URF	O2-C2-N1	-2.24	120.47	122.79
2	E	254	URF	F5-C5-C6	-2.16	120.00	121.58
2	B	254	URF	O2-C2-N1	-2.11	120.61	122.79

Continued on next page...

Continued from previous page...

Mol	Chain	Res	Type	Atoms	Z	Observed(°)	Ideal(°)
2	A	254	URF	O2-C2-N1	-2.09	120.63	122.79
2	F	254	URF	F5-C5-C6	-2.06	120.07	121.58
2	D	254	URF	F5-C5-C6	-2.02	120.09	121.58

There are no chirality outliers.

There are no torsion outliers.

There are no ring outliers.

12 monomers are involved in 9 short contacts:

Mol	Chain	Res	Type	Clashes	Symm-Clashes
2	E	254	URF	1	0
2	C	254	URF	1	0
2	D	254	URF	1	0
4	A	256	R2B	2	0
2	A	254	URF	1	0
2	B	254	URF	1	0
4	D	256	R2B	1	0
4	F	256	R2B	1	0
4	E	256	R2B	1	0
4	B	256	R2B	2	0
2	F	254	URF	1	0
4	C	256	R2B	2	0

5.7 Other polymers [i](#)

There are no such residues in this entry.

5.8 Polymer linkage issues [i](#)

There are no chain breaks in this entry.

6 Fit of model and data [i](#)

6.1 Protein, DNA and RNA chains [i](#)

In the following table, the column labelled ‘#RSRZ > 2’ contains the number (and percentage) of RSRZ outliers, followed by percent RSRZ outliers for the chain as percentile scores relative to all X-ray entries and entries of similar resolution. The OWAB column contains the minimum, median, 95th percentile and maximum values of the occupancy-weighted average B-factor per residue. The column labelled ‘Q < 0.9’ lists the number of (and percentage) of residues with an average occupancy less than 0.9.

Mol	Chain	Analysed	<RSRZ>	#RSRZ>2	OWAB(Å ²)	Q<0.9
1	A	243/253 (96%)	-0.60	0 100 100	10, 18, 34, 50	0
1	B	243/253 (96%)	-0.60	2 (0%) 86 84	11, 19, 37, 53	0
1	C	241/253 (95%)	-0.54	1 (0%) 92 90	11, 21, 38, 61	0
1	D	240/253 (94%)	-0.62	1 (0%) 92 90	12, 20, 34, 55	0
1	E	247/253 (97%)	-0.38	6 (2%) 59 54	13, 26, 44, 73	0
1	F	238/253 (94%)	-0.41	2 (0%) 86 84	14, 26, 43, 56	0
All	All	1452/1518 (95%)	-0.52	12 (0%) 86 84	10, 21, 41, 73	0

All (12) RSRZ outliers are listed below:

Mol	Chain	Res	Type	RSRZ
1	B	234	MET	3.9
1	E	230	ASN	3.6
1	C	7	PHE	3.5
1	E	232	GLU	3.0
1	E	231	ALA	2.9
1	E	233	THR	2.8
1	B	235	LYS	2.8
1	F	239	SER	2.3
1	E	3	LYS	2.1
1	D	240	HIS	2.1
1	E	234	MET	2.1
1	F	253	LEU	2.1

6.2 Non-standard residues in protein, DNA, RNA chains [i](#)

There are no non-standard protein/DNA/RNA residues in this entry.

6.3 Carbohydrates [i](#)

There are no monosaccharides in this entry.

6.4 Ligands [i](#)

In the following table, the Atoms column lists the number of modelled atoms in the group and the number defined in the chemical component dictionary. The B-factors column lists the minimum, median, 95th percentile and maximum values of B factors of atoms in the group. The column labelled 'Q< 0.9' lists the number of atoms with occupancy less than 0.9.

Mol	Type	Chain	Res	Atoms	RSCC	RSR	B-factors(Å ²)	Q<0.9
4	R2B	F	256	9/9	0.84	0.18	27,29,33,36	0
4	R2B	C	256	9/9	0.87	0.17	21,26,28,30	0
4	R2B	E	256	9/9	0.88	0.18	31,33,36,36	0
4	R2B	D	256	9/9	0.90	0.13	23,27,30,33	0
4	R2B	B	256	9/9	0.92	0.14	20,24,28,30	0
4	R2B	A	256	9/9	0.93	0.14	19,21,25,27	0
2	URF	C	254	9/9	0.93	0.11	22,22,22,23	0
2	URF	E	254	9/9	0.93	0.08	32,33,34,34	0
2	URF	D	254	9/9	0.94	0.10	31,35,36,38	0
2	URF	B	254	9/9	0.95	0.08	18,19,21,23	0
2	URF	F	254	9/9	0.95	0.08	24,26,26,27	0
2	URF	A	254	9/9	0.96	0.07	17,19,22,22	0
3	SO4	D	255	5/5	0.96	0.07	33,33,35,36	0
3	SO4	C	255	5/5	0.97	0.08	30,32,33,33	0
3	SO4	E	255	5/5	0.97	0.08	36,39,39,40	0
3	SO4	F	255	5/5	0.98	0.08	37,37,38,39	0
3	SO4	A	255	5/5	0.99	0.06	19,19,20,20	0
3	SO4	B	255	5/5	0.99	0.06	26,27,28,29	0

6.5 Other polymers [i](#)

There are no such residues in this entry.