



# Full wwPDB X-ray Structure Validation Report ⓘ

Mar 25, 2019 – 07:36 PM EDT

PDB ID : 2V7A  
Title : Crystal structure of the T315I Abl mutant in complex with the inhibitor PHA-739358  
Authors : Modugno, M.; Casale, E.; Soncini, C.; Rosettani, P.; Colombo, R.; Lupi, R.; Rusconi, L.; Fancelli, D.; Carpinelli, P.; Cameron, A.D.; Isacchi, A.; Moll, J.  
Deposited on : 2007-07-27  
Resolution : 2.50 Å(reported)

This is a Full wwPDB X-ray Structure Validation Report for a publicly released PDB entry.

We welcome your comments at [validation@mail.wwpdb.org](mailto:validation@mail.wwpdb.org)

A user guide is available at

<https://www.wwpdb.org/validation/2017/XrayValidationReportHelp>

with specific help available everywhere you see the ⓘ symbol.

---

The following versions of software and data (see [references ⓘ](#)) were used in the production of this report:

MolProbity : 4.02b-467  
Mogul : 1.8.0 (224370), CSD as540be (2019)  
Xtriage (Phenix) : 1.13  
EDS : rb-20031633  
Percentile statistics : 20171227.v01 (using entries in the PDB archive December 27th 2017)  
Refmac : 5.8.0158  
CCP4 : 7.0 (Gargrove)  
Ideal geometry (proteins) : Engh & Huber (2001)  
Ideal geometry (DNA, RNA) : Parkinson et al. (1996)  
Validation Pipeline (wwPDB-VP) : rb-20031633

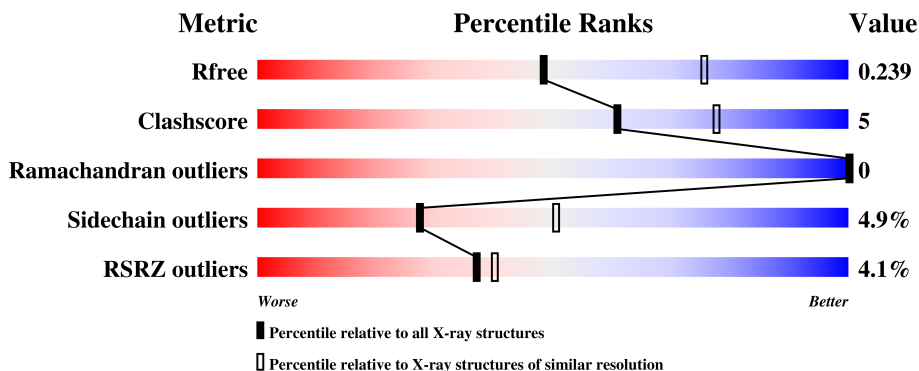
# 1 Overall quality at a glance

The following experimental techniques were used to determine the structure:

*X-RAY DIFFRACTION*

The reported resolution of this entry is 2.50 Å.

Percentile scores (ranging between 0-100) for global validation metrics of the entry are shown in the following graphic. The table shows the number of entries on which the scores are based.



Metric	Whole archive (#Entries)	Similar resolution (#Entries, resolution range(Å))
$R_{free}$	111664	4155 (2.50-2.50)
Clashscore	122126	4827 (2.50-2.50)
Ramachandran outliers	120053	4735 (2.50-2.50)
Sidechain outliers	120020	4737 (2.50-2.50)
RSRZ outliers	108989	4058 (2.50-2.50)

The table below summarises the geometric issues observed across the polymeric chains and their fit to the electron density. The red, orange, yellow and green segments on the lower bar indicate the fraction of residues that contain outliers for  $\geq 3$ , 2, 1 and 0 types of geometric quality criteria. A grey segment represents the fraction of residues that are not modelled. The numeric value for each fraction is indicated below the corresponding segment, with a dot representing fractions  $\leq 5\%$ . The upper red bar (where present) indicates the fraction of residues that have poor fit to the electron density. The numeric value is given above the bar.

Mol	Chain	Length	Quality of chain
1	A	286	 2% 83% 10% • 5%
1	B	286	 6% 79% 14% • 6%

## 2 Entry composition [i](#)

There are 4 unique types of molecules in this entry. The entry contains 4638 atoms, of which 0 are hydrogens and 0 are deuteriums.

In the tables below, the ZeroOcc column contains the number of atoms modelled with zero occupancy, the AltConf column contains the number of residues with at least one atom in alternate conformation and the Trace column contains the number of residues modelled with at most 2 atoms.

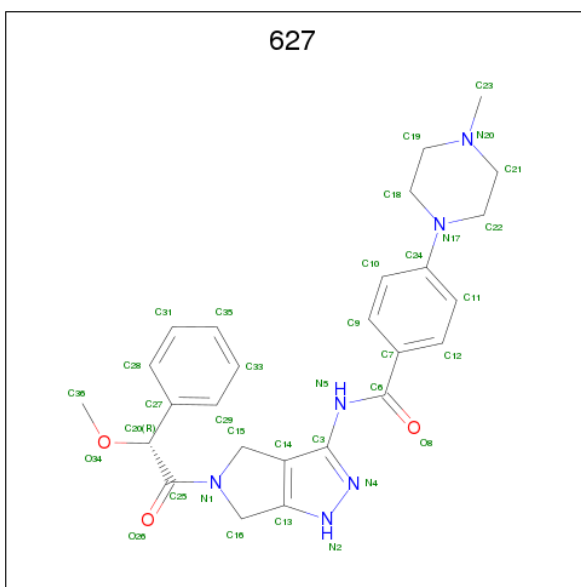
- Molecule 1 is a protein called PROTO-ONCOGENE TYROSINE-PROTEIN KINASE ABL1.

Mol	Chain	Residues	Atoms					ZeroOcc	AltConf	Trace	
			Total	C	N	O	P				S
1	A	271	2204	1417	359	410	1	17	0	0	1
1	B	270	2196	1413	358	407	1	17	0	0	1

There are 2 discrepancies between the modelled and reference sequences:

Chain	Residue	Modelled	Actual	Comment	Reference
A	315	ILE	THR	engineered mutation	UNP P00519
B	315	ILE	THR	engineered mutation	UNP P00519

- Molecule 2 is N-[(3E)-5-[(2R)-2-METHOXY-2-PHENYLACETYL]PYRROLO[3,4-C]PYRAZOL-3(5H)-YLIDENE]-4-(4-METHYLPIPERAZIN-1-YL)BENZAMIDE (three-letter code: 627) (formula: C<sub>26</sub>H<sub>30</sub>N<sub>6</sub>O<sub>3</sub>).



Mol	Chain	Residues	Atoms				ZeroOcc	AltConf
2	A	1	Total	C	N	O	0	0
			35	26	6	3		
2	B	1	Total	C	N	O	0	0
			35	26	6	3		

- Molecule 3 is MAGNESIUM ION (three-letter code: MG) (formula: Mg).

Mol	Chain	Residues	Atoms		ZeroOcc	AltConf
3	B	1	Total	Mg	0	0
			1	1		
3	A	1	Total	Mg	0	0
			1	1		

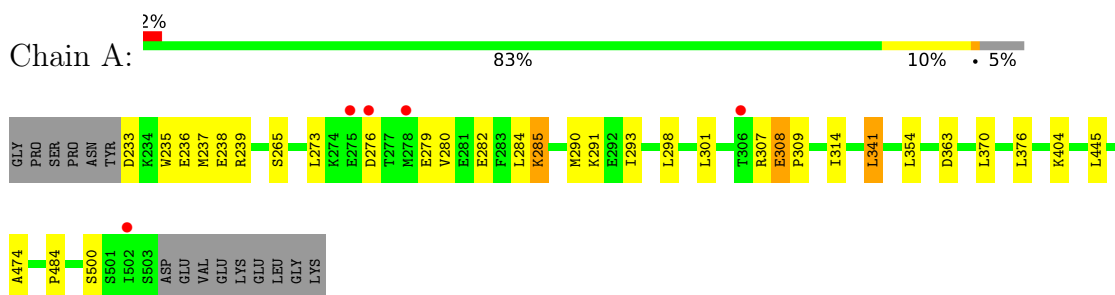
- Molecule 4 is water.

Mol	Chain	Residues	Atoms		ZeroOcc	AltConf
4	A	104	Total	O	0	0
			104	104		
4	B	62	Total	O	0	0
			62	62		

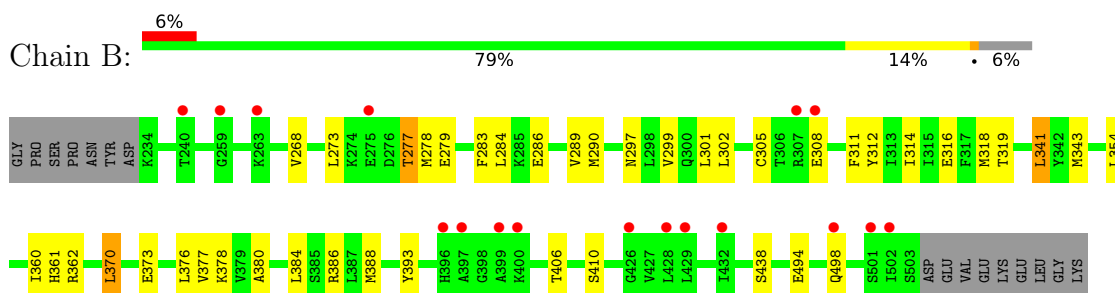
### 3 Residue-property plots [i](#)

These plots are drawn for all protein, RNA and DNA chains in the entry. The first graphic for a chain summarises the proportions of the various outlier classes displayed in the second graphic. The second graphic shows the sequence view annotated by issues in geometry and electron density. Residues are color-coded according to the number of geometric quality criteria for which they contain at least one outlier: green = 0, yellow = 1, orange = 2 and red = 3 or more. A red dot above a residue indicates a poor fit to the electron density ( $RSRZ > 2$ ). Stretches of 2 or more consecutive residues without any outlier are shown as a green connector. Residues present in the sample, but not in the model, are shown in grey.

- Molecule 1: PROTO-ONCOGENE TYROSINE-PROTEIN KINASE ABL1



- Molecule 1: PROTO-ONCOGENE TYROSINE-PROTEIN KINASE ABL1



## 4 Data and refinement statistics i

Property	Value	Source
Space group	P 62	Depositor
Cell constants a, b, c, $\alpha$ , $\beta$ , $\gamma$	159.76Å 159.76Å 56.93Å 90.00° 90.00° 120.00°	Depositor
Resolution (Å)	30.00 – 2.50 29.56 – 2.50	Depositor EDS
% Data completeness (in resolution range)	99.9 (30.00-2.50) 99.9 (29.56-2.50)	Depositor EDS
$R_{merge}$	0.08	Depositor
$R_{sym}$	(Not available)	Depositor
$\langle I/\sigma(I) \rangle$ <sup>1</sup>	3.18 (at 2.51Å)	Xtrriage
Refinement program	REFMAC 5.2.0019	Depositor
R, $R_{free}$	0.207 , 0.246 0.201 , 0.239	Depositor DCC
$R_{free}$ test set	1477 reflections (5.09%)	wwPDB-VP
Wilson B-factor (Å <sup>2</sup> )	34.8	Xtrriage
Anisotropy	0.198	Xtrriage
Bulk solvent $k_{sol}$ (e/Å <sup>3</sup> ), $B_{sol}$ (Å <sup>2</sup> )	0.37 , 40.0	EDS
L-test for twinning <sup>2</sup>	$\langle  L  \rangle = 0.49$ , $\langle L^2 \rangle = 0.32$	Xtrriage
Estimated twinning fraction	0.029 for h,-h-k,-l	Xtrriage
$F_o, F_c$ correlation	0.93	EDS
Total number of atoms	4638	wwPDB-VP
Average B, all atoms (Å <sup>2</sup> )	33.0	wwPDB-VP

Xtrriage's analysis on translational NCS is as follows: *The largest off-origin peak in the Patterson function is 3.53% of the height of the origin peak. No significant pseudotranslation is detected.*

<sup>1</sup>Intensities estimated from amplitudes.

<sup>2</sup>Theoretical values of  $\langle |L| \rangle$ ,  $\langle L^2 \rangle$  for acentric reflections are 0.5, 0.333 respectively for untwinned datasets, and 0.375, 0.2 for perfectly twinned datasets.

## 5 Model quality [i](#)

### 5.1 Standard geometry [i](#)

Bond lengths and bond angles in the following residue types are not validated in this section: MG, 627, PTR

The Z score for a bond length (or angle) is the number of standard deviations the observed value is removed from the expected value. A bond length (or angle) with  $|Z| > 5$  is considered an outlier worth inspection. RMSZ is the root-mean-square of all Z scores of the bond lengths (or angles).

Mol	Chain	Bond lengths		Bond angles	
		RMSZ	# Z  >5	RMSZ	# Z  >5
1	A	0.70	0/2242	0.73	1/3032 (0.0%)
1	B	0.60	0/2234	0.65	1/3021 (0.0%)
All	All	0.65	0/4476	0.69	2/6053 (0.0%)

There are no bond length outliers.

All (2) bond angle outliers are listed below:

Mol	Chain	Res	Type	Atoms	Z	Observed(°)	Ideal(°)
1	B	341	LEU	CA-CB-CG	5.50	127.96	115.30
1	A	341	LEU	CA-CB-CG	5.01	126.82	115.30

There are no chirality outliers.

There are no planarity outliers.

### 5.2 Too-close contacts [i](#)

In the following table, the Non-H and H(model) columns list the number of non-hydrogen atoms and hydrogen atoms in the chain respectively. The H(added) column lists the number of hydrogen atoms added and optimized by MolProbity. The Clashes column lists the number of clashes within the asymmetric unit, whereas Symm-Clashes lists symmetry related clashes.

Mol	Chain	Non-H	H(model)	H(added)	Clashes	Symm-Clashes
1	A	2204	0	2156	15	0
1	B	2196	0	2152	26	0
2	A	35	0	30	1	0
2	B	35	0	30	1	0
3	A	1	0	0	0	0
3	B	1	0	0	0	0
4	A	104	0	0	2	0

*Continued on next page...*

*Continued from previous page...*

Mol	Chain	Non-H	H(model)	H(added)	Clashes	Symm-Clashes
4	B	62	0	0	1	0
All	All	4638	0	4368	43	0

The all-atom clashscore is defined as the number of clashes found per 1000 atoms (including hydrogen atoms). The all-atom clashscore for this structure is 5.

All (43) close contacts within the same asymmetric unit are listed below, sorted by their clash magnitude.

Atom-1	Atom-2	Interatomic distance (Å)	Clash overlap (Å)
1:B:318:MET:HE3	1:B:378:LYS:HD2	1.71	0.73
1:A:404:LYS:HE3	1:A:445:LEU:HD23	1.70	0.72
1:A:235:TRP:CD1	1:A:291:LYS:HG2	2.32	0.65
1:B:386:ARG:HE	1:B:393:PTR:P	2.22	0.63
1:B:318:MET:HE1	1:B:378:LYS:HE3	1.82	0.60
1:A:307:ARG:O	1:A:308:GLU:HB3	2.01	0.59
1:A:239:ARG:HB2	1:A:239:ARG:NH1	2.19	0.58
1:A:236:GLU:HG2	4:A:2003:HOH:O	2.07	0.53
1:B:360:ILE:HD13	1:B:388:MET:HE3	1.89	0.53
1:B:406:THR:HG22	1:B:410:SER:HB2	1.90	0.52
1:B:370:LEU:HD22	1:B:380:ALA:CB	2.40	0.51
1:A:363:ASP:OD1	4:A:2050:HOH:O	2.19	0.51
1:B:386:ARG:NE	1:B:393:PTR:O3P	2.44	0.50
1:B:273:LEU:HD23	1:B:311:PHE:HD1	1.78	0.49
1:A:308:GLU:HB2	1:A:309:PRO:HD2	1.94	0.48
1:B:277:THR:HB	1:B:279:GLU:H	1.79	0.47
1:B:388:MET:HE2	1:B:393:PTR:HB3	1.97	0.47
1:B:305:CYS:HB2	1:B:312:TYR:HB2	1.97	0.47
1:B:370:LEU:HD22	1:B:380:ALA:HB2	1.96	0.47
1:A:273:LEU:HD21	1:A:280:VAL:HG22	1.98	0.46
1:A:290:MET:HB3	1:A:301:LEU:HB2	1.97	0.46
1:B:290:MET:HB3	1:B:301:LEU:HB2	1.98	0.46
1:B:268:VAL:HG12	1:B:302:LEU:CD1	2.46	0.46
1:A:293:ILE:HD12	1:A:298:LEU:HD13	1.99	0.45
1:B:283:PHE:HD2	1:B:284:LEU:CD1	2.28	0.45
1:B:361:HIS:O	1:B:362:ARG:HB2	2.17	0.44
1:B:384:LEU:O	1:B:386:ARG:HG2	2.18	0.43
1:B:318:MET:CE	1:B:378:LYS:HE3	2.48	0.43
1:B:316:GLU:HA	4:B:2008:HOH:O	2.18	0.43
1:B:343:MET:HG2	1:B:377:VAL:HG21	2.00	0.43
1:A:474:ALA:HB1	1:A:484:PRO:HD3	2.00	0.43
1:B:268:VAL:HG12	1:B:302:LEU:HD12	2.01	0.42

*Continued on next page...*



Continued from previous page...

Atom-1	Atom-2	Interatomic distance (Å)	Clash overlap (Å)
1:A:237:MET:SD	1:A:314:ILE:HD13	2.59	0.42
1:B:286:GLU:O	1:B:289:VAL:HG12	2.19	0.42
1:B:318:MET:HG3	1:B:370:LEU:HB3	2.01	0.42
1:A:279:GLU:HG2	1:A:282:GLU:OE2	2.20	0.41
2:A:1504:627:H10	2:A:1504:627:H182	1.80	0.41
1:B:297:ASN:O	1:B:378:LYS:HA	2.20	0.41
1:A:285:LYS:HA	1:A:285:LYS:HD3	1.96	0.41
1:B:494:GLU:O	1:B:498:GLN:HG2	2.20	0.41
1:B:302:LEU:HB2	1:B:314:ILE:HG22	2.03	0.41
1:A:235:TRP:NE1	1:A:291:LYS:HG2	2.35	0.40
2:B:1504:627:C15	2:B:1504:627:O8	2.69	0.40

There are no symmetry-related clashes.

### 5.3 Torsion angles [i](#)

#### 5.3.1 Protein backbone [i](#)

In the following table, the Percentiles column shows the percent Ramachandran outliers of the chain as a percentile score with respect to all X-ray entries followed by that with respect to entries of similar resolution.

The Analysed column shows the number of residues for which the backbone conformation was analysed, and the total number of residues.

Mol	Chain	Analysed	Favoured	Allowed	Outliers	Percentiles	
1	A	268/286 (94%)	255 (95%)	13 (5%)	0	100	100
1	B	267/286 (93%)	248 (93%)	19 (7%)	0	100	100
All	All	535/572 (94%)	503 (94%)	32 (6%)	0	100	100

There are no Ramachandran outliers to report.

#### 5.3.2 Protein sidechains [i](#)

In the following table, the Percentiles column shows the percent sidechain outliers of the chain as a percentile score with respect to all X-ray entries followed by that with respect to entries of similar resolution.

The Analysed column shows the number of residues for which the sidechain conformation was analysed, and the total number of residues.

Mol	Chain	Analysed	Rotameric	Outliers	Percentiles	
1	A	235/249 (94%)	223 (95%)	12 (5%)	26	48
1	B	234/249 (94%)	223 (95%)	11 (5%)	29	52
All	All	469/498 (94%)	446 (95%)	23 (5%)	27	50

All (23) residues with a non-rotameric sidechain are listed below:

Mol	Chain	Res	Type
1	A	233	ASP
1	A	238	GLU
1	A	265	SER
1	A	276	ASP
1	A	284	LEU
1	A	285	LYS
1	A	308	GLU
1	A	341	LEU
1	A	354	LEU
1	A	370	LEU
1	A	376	LEU
1	A	500	SER
1	B	277	THR
1	B	278	MET
1	B	299	VAL
1	B	308	GLU
1	B	319	THR
1	B	341	LEU
1	B	354	LEU
1	B	370	LEU
1	B	373	GLU
1	B	376	LEU
1	B	438	SER

Some sidechains can be flipped to improve hydrogen bonding and reduce clashes. All (3) such sidechains are listed below:

Mol	Chain	Res	Type
1	A	252	GLN
1	B	252	GLN
1	B	358	ASN

### 5.3.3 RNA

There are no RNA molecules in this entry.

## 5.4 Non-standard residues in protein, DNA, RNA chains

2 non-standard protein/DNA/RNA residues are modelled in this entry.

In the following table, the Counts columns list the number of bonds (or angles) for which Mogul statistics could be retrieved, the number of bonds (or angles) that are observed in the model and the number of bonds (or angles) that are defined in the Chemical Component Dictionary. The Link column lists molecule types, if any, to which the group is linked. The Z score for a bond length (or angle) is the number of standard deviations the observed value is removed from the expected value. A bond length (or angle) with  $|Z| > 2$  is considered an outlier worth inspection. RMSZ is the root-mean-square of all Z scores of the bond lengths (or angles).

Mol	Type	Chain	Res	Link	Bond lengths			Bond angles		
					Counts	RMSZ	# Z  > 2	Counts	RMSZ	# Z  > 2
1	PTR	A	393	1	16,16,17	2.01	2 (12%)	20,22,24	0.88	1 (5%)
1	PTR	B	393	1	16,16,17	1.84	2 (12%)	20,22,24	1.05	1 (5%)

In the following table, the Chirals column lists the number of chiral outliers, the number of chiral centers analysed, the number of these observed in the model and the number defined in the Chemical Component Dictionary. Similar counts are reported in the Torsion and Rings columns. '-' means no outliers of that kind were identified.

Mol	Type	Chain	Res	Link	Chirals	Torsions	Rings
1	PTR	A	393	1	-	0/9/11/13	0/1/1/1
1	PTR	B	393	1	-	0/9/11/13	0/1/1/1

All (4) bond length outliers are listed below:

Mol	Chain	Res	Type	Atoms	Z	Observed(Å)	Ideal(Å)
1	A	393	PTR	OH-CZ	-6.85	1.25	1.40
1	B	393	PTR	OH-CZ	-6.06	1.27	1.40
1	B	393	PTR	P-OH	2.79	1.64	1.59
1	A	393	PTR	P-OH	3.37	1.65	1.59

All (2) bond angle outliers are listed below:

Mol	Chain	Res	Type	Atoms	Z	Observed(°)	Ideal(°)
1	A	393	PTR	O2P-P-OH	2.21	112.65	105.37
1	B	393	PTR	O3P-P-OH	2.73	114.37	105.37

There are no chirality outliers.

There are no torsion outliers.

There are no ring outliers.

1 monomer is involved in 3 short contacts:

Mol	Chain	Res	Type	Clashes	Symm-Clashes
1	B	393	PTR	3	0

## 5.5 Carbohydrates [i](#)

There are no carbohydrates in this entry.

## 5.6 Ligand geometry [i](#)

Of 4 ligands modelled in this entry, 2 are monoatomic - leaving 2 for Mogul analysis.

In the following table, the Counts columns list the number of bonds (or angles) for which Mogul statistics could be retrieved, the number of bonds (or angles) that are observed in the model and the number of bonds (or angles) that are defined in the Chemical Component Dictionary. The Link column lists molecule types, if any, to which the group is linked. The Z score for a bond length (or angle) is the number of standard deviations the observed value is removed from the expected value. A bond length (or angle) with  $|Z| > 2$  is considered an outlier worth inspection. RMSZ is the root-mean-square of all Z scores of the bond lengths (or angles).

Mol	Type	Chain	Res	Link	Bond lengths			Bond angles		
					Counts	RMSZ	# $ Z  > 2$	Counts	RMSZ	# $ Z  > 2$
2	627	A	1504	-	36,39,39	2.46	6 (16%)	40,55,55	2.17	9 (22%)
2	627	B	1504	-	36,39,39	2.36	5 (13%)	40,55,55	1.87	6 (15%)

In the following table, the Chirals column lists the number of chiral outliers, the number of chiral centers analysed, the number of these observed in the model and the number defined in the Chemical Component Dictionary. Similar counts are reported in the Torsion and Rings columns. '-' means no outliers of that kind were identified.

Mol	Type	Chain	Res	Link	Chirals	Torsions	Rings
2	627	A	1504	-	-	0/24/44/44	0/5/5/5
2	627	B	1504	-	-	0/24/44/44	0/5/5/5

All (11) bond length outliers are listed below:

Mol	Chain	Res	Type	Atoms	Z	Observed(Å)	Ideal(Å)
2	A	1504	627	C18-N17	-12.15	1.27	1.46
2	B	1504	627	C18-N17	-11.54	1.28	1.46
2	A	1504	627	C19-C18	-4.45	1.34	1.51
2	B	1504	627	C19-C18	-4.41	1.34	1.51
2	A	1504	627	C20-C25	-3.35	1.50	1.54

*Continued on next page...*

Continued from previous page...

Mol	Chain	Res	Type	Atoms	Z	Observed(Å)	Ideal(Å)
2	B	1504	627	C20-C25	-3.09	1.50	1.54
2	A	1504	627	C15-N1	2.26	1.50	1.46
2	B	1504	627	N4-N2	2.51	1.42	1.37
2	A	1504	627	N4-N2	2.53	1.42	1.37
2	B	1504	627	C14-C13	2.61	1.43	1.39
2	A	1504	627	C14-C13	2.81	1.43	1.39

All (15) bond angle outliers are listed below:

Mol	Chain	Res	Type	Atoms	Z	Observed(°)	Ideal(°)
2	A	1504	627	C21-C22-N17	-4.47	102.04	110.69
2	B	1504	627	C22-C21-N20	-2.98	107.50	110.81
2	A	1504	627	C11-C12-C7	-2.84	117.47	120.78
2	A	1504	627	C13-C16-N1	-2.27	100.31	102.39
2	B	1504	627	C13-C16-N1	-2.17	100.41	102.39
2	B	1504	627	C36-O34-C20	-2.04	110.82	112.78
2	A	1504	627	C10-C24-N17	-2.02	118.58	121.38
2	A	1504	627	C12-C7-C9	2.10	121.58	118.59
2	A	1504	627	C21-N20-C19	2.81	113.48	109.52
2	A	1504	627	C19-C18-N17	3.53	117.51	110.69
2	A	1504	627	C22-N17-C18	3.54	119.14	111.53
2	B	1504	627	C22-N17-C18	4.31	120.80	111.53
2	B	1504	627	C19-C18-N17	5.32	120.96	110.69
2	B	1504	627	C18-C19-N20	7.31	118.94	110.81
2	A	1504	627	C18-C19-N20	9.52	121.40	110.81

There are no chirality outliers.

There are no torsion outliers.

There are no ring outliers.

2 monomers are involved in 2 short contacts:

Mol	Chain	Res	Type	Clashes	Symm-Clashes
2	A	1504	627	1	0
2	B	1504	627	1	0

## 5.7 Other polymers [i](#)

There are no such residues in this entry.

## 5.8 Polymer linkage issues

There are no chain breaks in this entry.

## 6 Fit of model and data

### 6.1 Protein, DNA and RNA chains

In the following table, the column labelled ‘#RSRZ > 2’ contains the number (and percentage) of RSRZ outliers, followed by percent RSRZ outliers for the chain as percentile scores relative to all X-ray entries and entries of similar resolution. The OWAB column contains the minimum, median, 95<sup>th</sup> percentile and maximum values of the occupancy-weighted average B-factor per residue. The column labelled ‘Q < 0.9’ lists the number of (and percentage) of residues with an average occupancy less than 0.9.

Mol	Chain	Analysed	<RSRZ>	#RSRZ>2	OWAB(Å <sup>2</sup> )	Q<0.9
1	A	270/286 (94%)	-0.30	5 (1%) 66 69	12, 23, 51, 70	0
1	B	269/286 (94%)	0.10	17 (6%) 20 21	18, 40, 69, 76	0
All	All	539/572 (94%)	-0.10	22 (4%) 37 40	12, 30, 65, 76	0

All (22) RSRZ outliers are listed below:

Mol	Chain	Res	Type	RSRZ
1	B	502	ILE	4.9
1	A	276	ASP	4.5
1	A	278	MET	3.7
1	B	307	ARG	3.2
1	B	429	LEU	3.0
1	A	275	GLU	2.8
1	B	396	HIS	2.7
1	B	397	ALA	2.5
1	A	502	ILE	2.4
1	B	400	LYS	2.3
1	A	306	THR	2.3
1	B	432	ILE	2.3
1	B	399	ALA	2.3
1	B	275	GLU	2.3
1	B	501	SER	2.3
1	B	259	GLY	2.2
1	B	426	GLY	2.1
1	B	498	GLN	2.1
1	B	428	LEU	2.1
1	B	308	GLU	2.1
1	B	263	LYS	2.1
1	B	240	THR	2.0

## 6.2 Non-standard residues in protein, DNA, RNA chains [i](#)

In the following table, the Atoms column lists the number of modelled atoms in the group and the number defined in the chemical component dictionary. The B-factors column lists the minimum, median, 95<sup>th</sup> percentile and maximum values of B factors of atoms in the group. The column labelled 'Q< 0.9' lists the number of atoms with occupancy less than 0.9.

Mol	Type	Chain	Res	Atoms	RSCC	RSR	B-factors(Å <sup>2</sup> )	Q<0.9
1	PTR	B	393	16/17	0.84	0.17	57,59,63,65	0
1	PTR	A	393	16/17	0.95	0.12	25,28,40,40	0

## 6.3 Carbohydrates [i](#)

There are no carbohydrates in this entry.

## 6.4 Ligands [i](#)

In the following table, the Atoms column lists the number of modelled atoms in the group and the number defined in the chemical component dictionary. The B-factors column lists the minimum, median, 95<sup>th</sup> percentile and maximum values of B factors of atoms in the group. The column labelled 'Q< 0.9' lists the number of atoms with occupancy less than 0.9.

Mol	Type	Chain	Res	Atoms	RSCC	RSR	B-factors(Å <sup>2</sup> )	Q<0.9
3	MG	B	1505	1/1	0.83	0.26	49,49,49,49	0
3	MG	A	1505	1/1	0.90	0.28	32,32,32,32	0
2	627	A	1504	35/35	0.95	0.14	13,17,34,35	0
2	627	B	1504	35/35	0.95	0.13	25,34,49,51	0

## 6.5 Other polymers [i](#)

There are no such residues in this entry.