



# Full wwPDB X-ray Structure Validation Report ⓘ

Jun 15, 2024 – 06:40 PM EDT

PDB ID : 2G5P  
Title : Crystal structure of human dipeptidyl peptidase IV (DPPIV) complexed with cyanopyrrolidine (C5-pro-pro) inhibitor 21ac  
Authors : Longenecker, K.L.; Fry, E.H.; Lake, M.R.; Solomon, L.R.; Pei, Z.; Li, X.  
Deposited on : 2006-02-23  
Resolution : 2.40 Å(reported)

This is a Full wwPDB X-ray Structure Validation Report for a publicly released PDB entry.

We welcome your comments at [validation@mail.wwpdb.org](mailto:validation@mail.wwpdb.org)

A user guide is available at

<https://www.wwpdb.org/validation/2017/XrayValidationReportHelp>

with specific help available everywhere you see the ⓘ symbol.

The types of validation reports are described at

<http://www.wwpdb.org/validation/2017/FAQs#types>.

---

The following versions of software and data (see [references ⓘ](#)) were used in the production of this report:

MolProbity : 4.02b-467  
Mogul : 2022.3.0, CSD as543be (2022)  
Xtriage (Phenix) : 1.20.1  
EDS : 2.37.1  
buster-report : 1.1.7 (2018)  
Percentile statistics : 20191225.v01 (using entries in the PDB archive December 25th 2019)  
Refmac : 5.8.0158  
CCP4 : 7.0.044 (Gargrove)  
Ideal geometry (proteins) : Engh & Huber (2001)  
Ideal geometry (DNA, RNA) : Parkinson et al. (1996)  
Validation Pipeline (wwPDB-VP) : 2.37.1

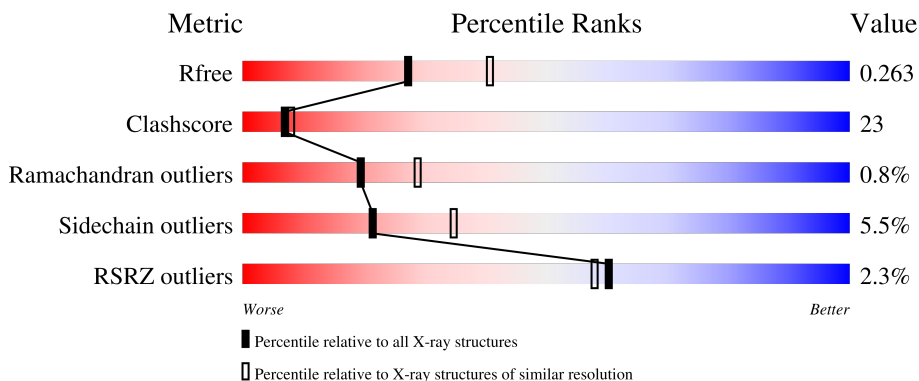
# 1 Overall quality at a glance

The following experimental techniques were used to determine the structure:

*X-RAY DIFFRACTION*



The reported resolution of this entry is 2.40 Å.

Percentile scores (ranging between 0-100) for global validation metrics of the entry are shown in the following graphic. The table shows the number of entries on which the scores are based.



Metric	Whole archive (#Entries)	Similar resolution (#Entries, resolution range(Å))
$R_{free}$	130704	3907 (2.40-2.40)
Clashscore	141614	4398 (2.40-2.40)
Ramachandran outliers	138981	4318 (2.40-2.40)
Sidechain outliers	138945	4319 (2.40-2.40)
RSRZ outliers	127900	3811 (2.40-2.40)

The table below summarises the geometric issues observed across the polymeric chains and their fit to the electron density. The red, orange, yellow and green segments of the lower bar indicate the fraction of residues that contain outliers for  $\geq 3$ , 2, 1 and 0 types of geometric quality criteria respectively. A grey segment represents the fraction of residues that are not modelled. The numeric value for each fraction is indicated below the corresponding segment, with a dot representing fractions  $\leq 5\%$ . The upper red bar (where present) indicates the fraction of residues that have poor fit to the electron density. The numeric value is given above the bar.

Mol	Chain	Length	Quality of chain
1	A	726	
1	B	726	

## 2 Entry composition [i](#)

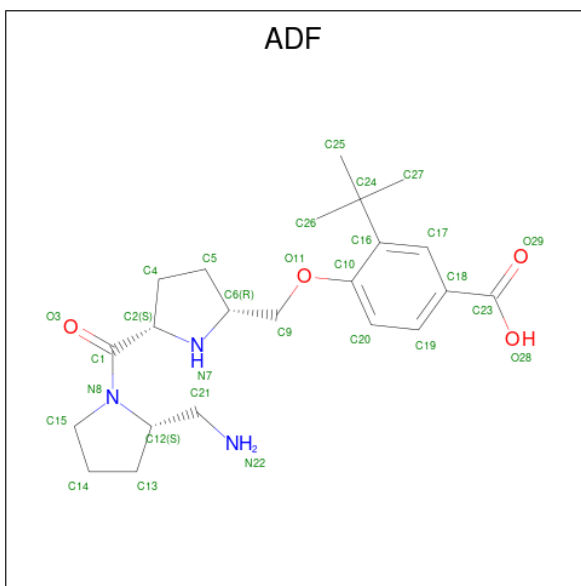
There are 3 unique types of molecules in this entry. The entry contains 13526 atoms, of which 0 are hydrogens and 0 are deuteriums.

In the tables below, the ZeroOcc column contains the number of atoms modelled with zero occupancy, the AltConf column contains the number of residues with at least one atom in alternate conformation and the Trace column contains the number of residues modelled with at most 2 atoms.

- Molecule 1 is a protein called Dipeptidyl peptidase 4.

Mol	Chain	Residues	Atoms					ZeroOcc	AltConf	Trace
			Total	C	N	O	S			
1	A	726	Total 5949	C 3816	N 980	O 1127	S 26	0	0	0
1	B	726	Total 5949	C 3816	N 980	O 1127	S 26	0	0	0

- Molecule 2 is 4-{[(2R,5S)-5-{[(2S)-2-(AMINOMETHYL)PYRROLIDIN-1-YL]CARBONYL}PYRROLIDIN-2-YL]METHOXY}-3-TERT-BUTYL BENZOIC ACID (three-letter code: ADF) (formula: C<sub>22</sub>H<sub>33</sub>N<sub>3</sub>O<sub>4</sub>).



Mol	Chain	Residues	Atoms				ZeroOcc	AltConf
			Total	C	N	O		
2	A	1	Total 29	C 22	N 3	O 4	0	0

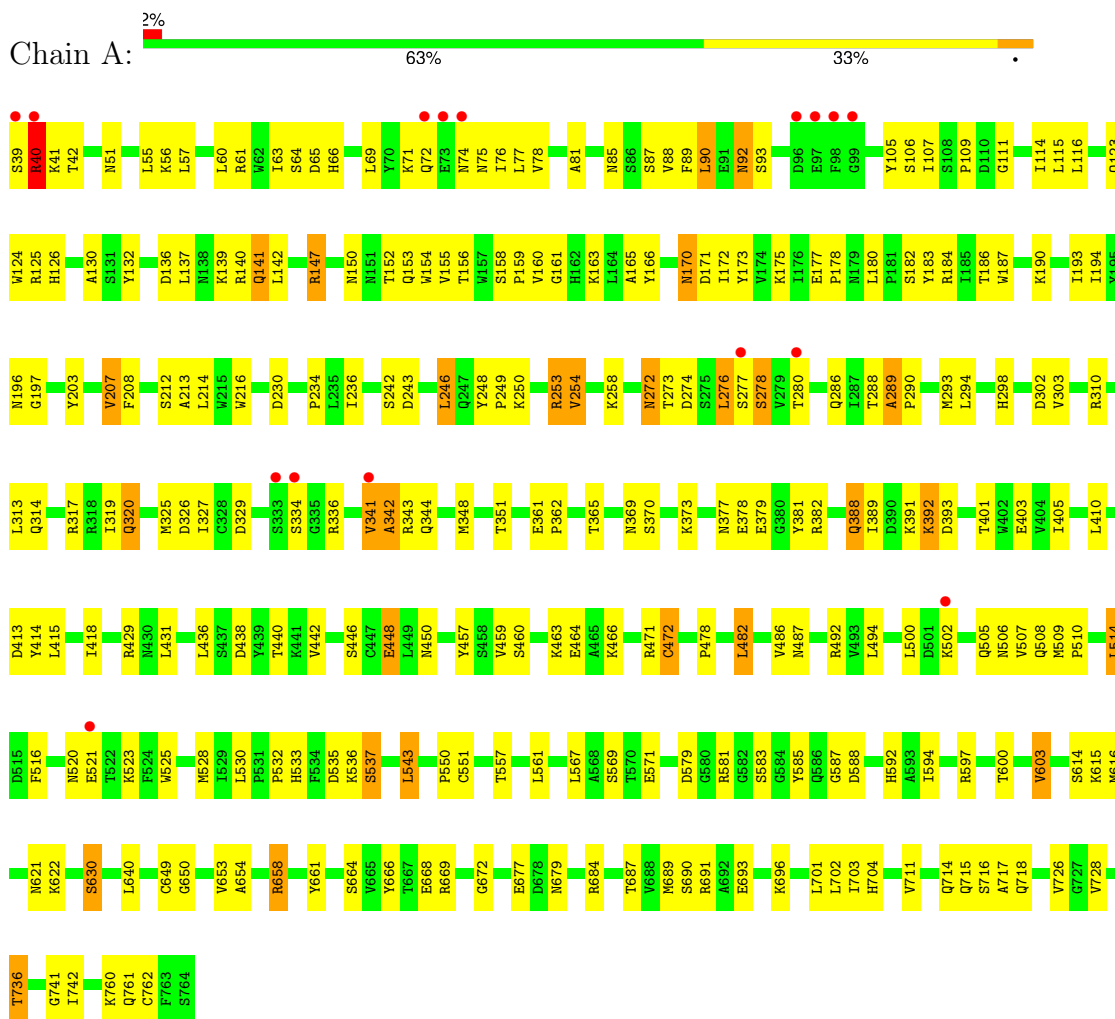
- Molecule 3 is water.

Mol	Chain	Residues	Atoms		ZeroOcc	AltConf
3	A	737	Total 737	O 737	0	0
3	B	862	Total 862	O 862	0	0

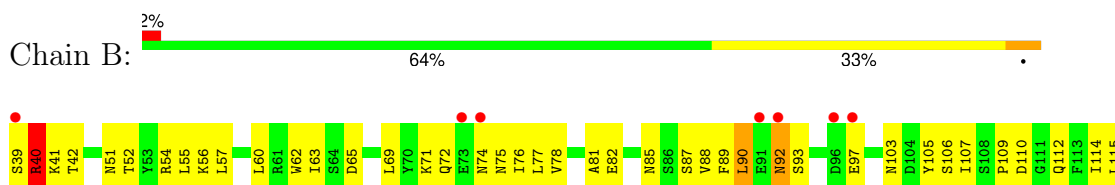
### 3 Residue-property plots [i](#)

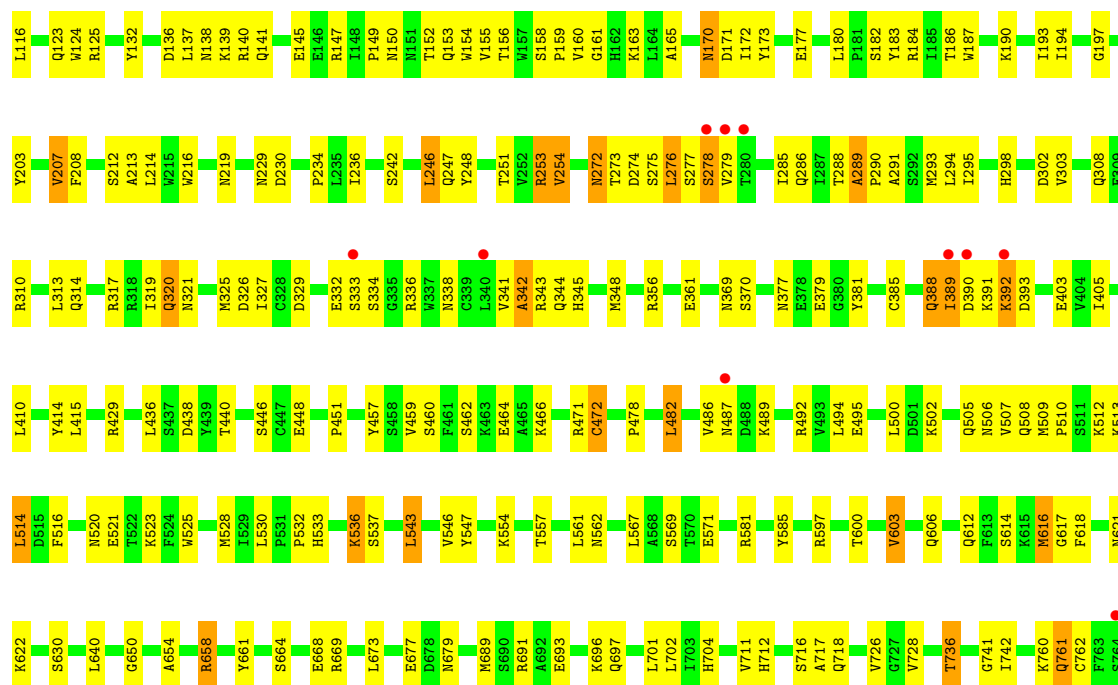
These plots are drawn for all protein, RNA, DNA and oligosaccharide chains in the entry. The first graphic for a chain summarises the proportions of the various outlier classes displayed in the second graphic. The second graphic shows the sequence view annotated by issues in geometry and electron density. Residues are color-coded according to the number of geometric quality criteria for which they contain at least one outlier: green = 0, yellow = 1, orange = 2 and red = 3 or more. A red dot above a residue indicates a poor fit to the electron density ( $RSRZ > 2$ ). Stretches of 2 or more consecutive residues without any outlier are shown as a green connector. Residues present in the sample, but not in the model, are shown in grey.

#### • Molecule 1: Dipeptidyl peptidase 4



#### • Molecule 1: Dipeptidyl peptidase 4





## 4 Data and refinement statistics

Property	Value	Source
Space group	P 1 21 1	Depositor
Cell constants a, b, c, $\alpha$ , $\beta$ , $\gamma$	65.52Å 126.52Å 112.22Å 90.00° 99.10° 90.00°	Depositor
Resolution (Å)	50.00 – 2.40 19.96 – 2.40	Depositor EDS
% Data completeness (in resolution range)	86.6 (50.00-2.40) 87.1 (19.96-2.40)	Depositor EDS
$R_{merge}$	0.06	Depositor
$R_{sym}$	(Not available)	Depositor
$\langle I/\sigma(I) \rangle$ <sup>1</sup>	3.24 (at 2.41Å)	Xtrriage
Refinement program	CNS, CNX	Depositor
R, $R_{free}$	0.201 , 0.271 0.194 , 0.263	Depositor DCC
$R_{free}$ test set	3136 reflections (5.13%)	wwPDB-VP
Wilson B-factor (Å <sup>2</sup> )	35.6	Xtrriage
Anisotropy	0.168	Xtrriage
Bulk solvent $k_{sol}$ (e/Å <sup>3</sup> ), $B_{sol}$ (Å <sup>2</sup> )	0.29 , 47.1	EDS
L-test for twinning <sup>2</sup>	$\langle  L  \rangle = 0.50$ , $\langle L^2 \rangle = 0.33$	Xtrriage
Estimated twinning fraction	No twinning to report.	Xtrriage
$F_o, F_c$ correlation	0.94	EDS
Total number of atoms	13526	wwPDB-VP
Average B, all atoms (Å <sup>2</sup> )	39.0	wwPDB-VP

Xtrriage's analysis on translational NCS is as follows: *The largest off-origin peak in the Patterson function is 3.97% of the height of the origin peak. No significant pseudotranslation is detected.*

<sup>1</sup>Intensities estimated from amplitudes.

<sup>2</sup>Theoretical values of  $\langle |L| \rangle$ ,  $\langle L^2 \rangle$  for acentric reflections are 0.5, 0.333 respectively for untwinned datasets, and 0.375, 0.2 for perfectly twinned datasets.

## 5 Model quality [i](#)

### 5.1 Standard geometry [i](#)

Bond lengths and bond angles in the following residue types are not validated in this section: ADF

The Z score for a bond length (or angle) is the number of standard deviations the observed value is removed from the expected value. A bond length (or angle) with  $|Z| > 5$  is considered an outlier worth inspection. RMSZ is the root-mean-square of all Z scores of the bond lengths (or angles).

Mol	Chain	Bond lengths		Bond angles	
		RMSZ	# Z  >5	RMSZ	# Z  >5
1	A	0.37	1/6120 (0.0%)	0.63	0/8321
1	B	0.35	0/6120	0.63	0/8321
All	All	0.36	1/12240 (0.0%)	0.63	0/16642

All (1) bond length outliers are listed below:

Mol	Chain	Res	Type	Atoms	Z	Observed(Å)	Ideal(Å)
1	A	630	SER	C-O	8.74	1.40	1.23

There are no bond angle outliers.

There are no chirality outliers.

There are no planarity outliers.

### 5.2 Too-close contacts [i](#)

In the following table, the Non-H and H(model) columns list the number of non-hydrogen atoms and hydrogen atoms in the chain respectively. The H(added) column lists the number of hydrogen atoms added and optimized by MolProbity. The Clashes column lists the number of clashes within the asymmetric unit, whereas Symm-Clashes lists symmetry-related clashes.

Mol	Chain	Non-H	H(model)	H(added)	Clashes	Symm-Clashes
1	A	5949	0	5666	271	0
1	B	5949	0	5667	270	0
2	A	29	0	30	1	0
3	A	737	0	0	91	0
3	B	862	0	0	91	0
All	All	13526	0	11363	535	0

The all-atom clashscore is defined as the number of clashes found per 1000 atoms (including



hydrogen atoms). The all-atom clashscore for this structure is 23.

All (535) close contacts within the same asymmetric unit are listed below, sorted by their clash magnitude.

Atom-1	Atom-2	Interatomic distance (Å)	Clash overlap (Å)
1:B:361:GLU:HG2	3:B:776:HOH:O	1.54	1.06
1:A:289:ALA:HB1	1:A:290:PRO:HA	1.40	1.04
1:B:289:ALA:HB1	1:B:290:PRO:HA	1.39	1.02
1:B:172:ILE:H	1:B:186:THR:HG22	1.26	0.97
1:A:172:ILE:H	1:A:186:THR:HG22	1.24	0.95
1:A:379:GLU:HB3	3:A:922:HOH:O	1.72	0.88
1:A:442:VAL:HB	3:A:910:HOH:O	1.74	0.88
1:B:289:ALA:HB1	1:B:290:PRO:CA	2.06	0.85
1:A:521:GLU:HG2	3:A:913:HOH:O	1.76	0.85
1:A:717:ALA:O	1:B:736:THR:HG21	1.78	0.84
1:B:379:GLU:HB2	3:B:791:HOH:O	1.77	0.84
1:A:289:ALA:HB1	1:A:290:PRO:CA	2.07	0.84
1:A:714:GLN:HG2	3:A:1462:HOH:O	1.79	0.82
1:B:390:ASP:HB3	3:B:790:HOH:O	1.79	0.82
1:B:410:LEU:HD13	1:B:415:LEU:HD23	1.61	0.82
1:B:673:LEU:HG	3:B:1581:HOH:O	1.81	0.81
1:A:410:LEU:HD13	1:A:415:LEU:HD23	1.64	0.80
1:A:152:THR:HB	3:A:1219:HOH:O	1.80	0.80
1:B:344:GLN:HB2	3:B:1595:HOH:O	1.82	0.80
1:A:392:LYS:HG3	3:A:1003:HOH:O	1.81	0.79
1:B:172:ILE:H	1:B:186:THR:CG2	1.96	0.79
1:B:320:GLN:OE1	1:B:669:ARG:HD3	1.85	0.77
1:A:76:ILE:HB	1:A:90:LEU:CD1	2.15	0.76
1:B:76:ILE:HB	1:B:90:LEU:CD1	2.14	0.76
1:B:275:SER:HB2	3:B:1438:HOH:O	1.85	0.76
1:A:172:ILE:H	1:A:186:THR:CG2	1.97	0.76
1:A:736:THR:HG21	1:B:717:ALA:O	1.86	0.75
1:A:76:ILE:HB	1:A:90:LEU:HD11	1.69	0.74
1:A:320:GLN:OE1	1:A:669:ARG:HD3	1.87	0.74
1:B:726:VAL:HG12	1:B:728:VAL:HG23	1.70	0.74
1:A:190:LYS:HE3	1:A:193:ILE:HG13	1.70	0.74
1:B:76:ILE:HB	1:B:90:LEU:HD11	1.67	0.74
1:B:471:ARG:HB3	3:B:1429:HOH:O	1.87	0.73
1:A:726:VAL:HG12	1:A:728:VAL:HG23	1.70	0.73
1:B:193:ILE:HG22	1:B:194:ILE:HD12	1.70	0.73
1:B:190:LYS:HE3	1:B:193:ILE:HG13	1.70	0.73
1:A:658:ARG:HG2	1:A:661:TYR:CE2	2.24	0.72
1:B:391:LYS:HG3	3:B:794:HOH:O	1.89	0.72

*Continued on next page...*

*Continued from previous page...*

Atom-1	Atom-2	Interatomic distance (Å)	Clash overlap (Å)
1:B:90:LEU:HD22	1:B:90:LEU:O	1.90	0.71
1:A:253:ARG:HH22	1:B:253:ARG:HH22	1.39	0.71
1:A:429:ARG:NE	3:A:885:HOH:O	2.23	0.71
1:B:332:GLU:HG2	3:B:1254:HOH:O	1.90	0.71
1:A:193:ILE:HG22	1:A:194:ILE:HD12	1.71	0.70
1:B:82:GLU:HG2	3:B:1233:HOH:O	1.90	0.70
1:A:450:ASN:HB2	3:A:1276:HOH:O	1.91	0.70
1:A:762:CYS:HB2	3:A:914:HOH:O	1.92	0.70
1:A:640:LEU:HD11	1:A:650:GLY:HA3	1.72	0.70
1:B:97:GLU:HB3	3:B:1023:HOH:O	1.92	0.69
1:B:691:ARG:NH1	3:B:1002:HOH:O	2.24	0.69
1:A:448:GLU:HG3	3:A:1143:HOH:O	1.91	0.69
1:B:658:ARG:HG2	1:B:661:TYR:CE2	2.27	0.69
1:B:56:LYS:HE3	3:B:1588:HOH:O	1.92	0.69
1:B:640:LEU:HD11	1:B:650:GLY:HA3	1.73	0.69
1:A:142:LEU:HB3	3:A:1362:HOH:O	1.93	0.69
1:A:90:LEU:O	1:A:90:LEU:HD22	1.93	0.68
1:B:289:ALA:CB	1:B:290:PRO:HA	2.22	0.68
1:B:513:LYS:HD3	3:B:1452:HOH:O	1.93	0.68
1:A:130:ALA:O	3:A:1219:HOH:O	2.11	0.67
1:A:413:ASP:HB3	3:A:1016:HOH:O	1.94	0.67
1:B:114:ILE:HD11	1:B:137:LEU:HD21	1.76	0.67
1:A:693:GLU:OE1	1:A:696:LYS:HE2	1.93	0.67
1:A:182:SER:HB2	3:A:912:HOH:O	1.95	0.66
1:B:341:VAL:HG13	3:B:804:HOH:O	1.94	0.66
1:A:114:ILE:HD11	1:A:137:LEU:HD21	1.77	0.66
1:B:333:SER:HB2	3:B:972:HOH:O	1.96	0.65
1:B:554:LYS:HG2	3:B:985:HOH:O	1.95	0.65
1:A:289:ALA:CB	1:A:290:PRO:HA	2.23	0.65
1:B:114:ILE:CD1	1:B:137:LEU:HD21	2.27	0.65
1:A:171:ASP:OD1	1:A:186:THR:HG23	1.96	0.65
1:B:391:LYS:HG2	3:B:986:HOH:O	1.96	0.65
1:B:693:GLU:OE1	1:B:696:LYS:HE2	1.97	0.65
1:A:71:LYS:HG3	3:A:1277:HOH:O	1.95	0.64
1:A:51:ASN:HB2	3:A:853:HOH:O	1.98	0.64
1:B:153:GLN:HE22	1:B:170:ASN:ND2	1.96	0.64
1:B:341:VAL:O	1:B:342:ALA:HB2	1.98	0.64
1:A:114:ILE:CD1	1:A:137:LEU:HD21	2.28	0.64
1:A:505:GLN:HB3	3:A:1488:HOH:O	1.98	0.63
1:A:69:LEU:HD13	1:A:107:ILE:HD12	1.81	0.62
1:A:234:PRO:HB2	1:B:248:TYR:CZ	2.34	0.62

*Continued on next page...*

*Continued from previous page...*

Atom-1	Atom-2	Interatomic distance (Å)	Clash overlap (Å)
1:B:41:LYS:HD3	3:B:1596:HOH:O	1.99	0.62
1:B:512:LYS:HD3	3:B:796:HOH:O	1.98	0.62
1:A:153:GLN:HE22	1:A:170:ASN:ND2	1.97	0.62
1:B:338:ASN:ND2	3:B:1586:HOH:O	2.31	0.62
1:A:325:MET:SD	3:A:1403:HOH:O	2.56	0.62
1:B:214:LEU:HD12	1:B:214:LEU:O	1.99	0.61
1:A:89:PHE:HD1	1:A:90:LEU:HD12	1.65	0.61
1:A:250:LYS:HD2	3:A:1367:HOH:O	2.00	0.61
1:B:184:ARG:HD3	1:B:186:THR:O	2.00	0.61
1:B:69:LEU:HD13	1:B:107:ILE:HD12	1.81	0.61
1:B:677:GLU:CD	1:B:677:GLU:H	2.03	0.61
1:A:325:MET:HE2	1:A:327:ILE:HD11	1.81	0.61
1:A:341:VAL:O	1:A:342:ALA:HB2	2.00	0.61
1:A:677:GLU:H	1:A:677:GLU:CD	2.04	0.61
1:A:184:ARG:HD3	1:A:186:THR:O	1.99	0.61
1:A:440:THR:HB	3:A:1455:HOH:O	2.00	0.61
1:B:74:ASN:HB2	3:B:850:HOH:O	2.01	0.61
1:B:391:LYS:HD3	3:B:1568:HOH:O	2.00	0.61
1:B:89:PHE:HD1	1:B:90:LEU:HD12	1.65	0.61
1:B:325:MET:HE2	1:B:327:ILE:HD11	1.82	0.60
1:A:373:LYS:HE3	3:A:1403:HOH:O	2.00	0.60
1:B:507:VAL:HG13	1:B:509:MET:HG2	1.83	0.60
1:B:388:GLN:CB	1:B:391:LYS:HB2	2.32	0.60
1:B:272:ASN:ND2	1:B:274:ASP:H	1.98	0.60
1:A:272:ASN:ND2	1:A:274:ASP:H	2.00	0.60
1:B:171:ASP:OD1	1:B:186:THR:HG23	2.01	0.60
1:A:487:ASN:HB2	3:A:806:HOH:O	2.01	0.59
1:B:172:ILE:N	1:B:186:THR:HG22	2.09	0.59
1:B:341:VAL:HG12	3:B:1289:HOH:O	2.02	0.59
1:B:272:ASN:HD22	1:B:274:ASP:H	1.50	0.59
1:B:438:ASP:OD1	1:B:440:THR:HB	2.02	0.59
1:A:391:LYS:HB3	3:A:1088:HOH:O	2.01	0.59
1:A:184:ARG:HD2	1:A:187:TRP:CE2	2.37	0.59
1:A:289:ALA:HB3	3:A:879:HOH:O	2.02	0.59
1:B:392:LYS:HD2	1:B:393:ASP:H	1.68	0.59
1:A:173:TYR:HB3	1:A:182:SER:OG	2.03	0.59
1:A:177:GLU:HB2	1:A:180:LEU:HD22	1.85	0.59
1:B:177:GLU:HB2	1:B:180:LEU:HD22	1.83	0.59
1:B:338:ASN:HB2	3:B:968:HOH:O	2.03	0.59
1:A:253:ARG:HD3	3:A:1380:HOH:O	2.02	0.59
1:B:341:VAL:HG23	3:B:1595:HOH:O	2.03	0.59

*Continued on next page...*

*Continued from previous page...*

Atom-1	Atom-2	Interatomic distance (Å)	Clash overlap (Å)
1:B:348:MET:HG3	3:B:1537:HOH:O	2.03	0.59
1:B:184:ARG:HD2	1:B:187:TRP:CE2	2.38	0.58
1:A:106:SER:HB3	1:A:115:LEU:HB3	1.85	0.58
1:A:551:CYS:HB2	3:A:1510:HOH:O	2.03	0.58
1:A:438:ASP:OD1	1:A:440:THR:HB	2.04	0.58
1:B:622:LYS:HE3	3:B:1546:HOH:O	2.02	0.58
1:A:594:ILE:HG22	3:A:1474:HOH:O	2.02	0.58
1:A:289:ALA:CB	1:A:290:PRO:CA	2.81	0.58
1:A:272:ASN:HD22	1:A:274:ASP:H	1.52	0.58
1:A:507:VAL:HG13	1:A:509:MET:HG2	1.86	0.57
1:A:615:LYS:HG3	3:A:1220:HOH:O	2.03	0.57
1:B:173:TYR:HB3	1:B:182:SER:OG	2.03	0.57
1:A:703:ILE:HG22	3:A:1534:HOH:O	2.03	0.57
1:B:388:GLN:HB3	1:B:391:LYS:HB2	1.85	0.57
1:A:41:LYS:HE2	1:A:506:ASN:O	2.04	0.57
1:B:106:SER:HB3	1:B:115:LEU:HB3	1.85	0.57
1:A:277:SER:O	1:A:278:SER:HB3	2.05	0.57
1:B:41:LYS:HE2	1:B:506:ASN:O	2.05	0.57
1:A:550:PRO:HB2	3:A:1510:HOH:O	2.04	0.57
1:B:345:HIS:HD2	3:B:1533:HOH:O	1.87	0.57
1:A:85:ASN:ND2	3:A:856:HOH:O	2.37	0.57
1:B:277:SER:O	1:B:278:SER:HB3	2.05	0.57
1:A:39:SER:O	1:A:40:ARG:HD2	2.05	0.56
1:A:132:TYR:HE1	3:A:1219:HOH:O	1.87	0.56
1:A:658:ARG:HG3	1:A:658:ARG:O	2.05	0.56
1:A:502:LYS:O	1:A:505:GLN:HG2	2.05	0.56
1:B:693:GLU:HG2	3:B:1303:HOH:O	2.04	0.56
1:A:57:LEU:HD21	3:A:1073:HOH:O	2.05	0.56
1:A:177:GLU:HB2	1:A:180:LEU:HD13	1.88	0.56
1:A:691:ARG:NH1	3:A:1458:HOH:O	2.37	0.56
1:B:502:LYS:O	1:B:505:GLN:HG2	2.05	0.56
1:A:630:SER:HA	1:A:654:ALA:O	2.06	0.56
1:B:253:ARG:NH1	3:B:1179:HOH:O	2.37	0.56
1:A:597:ARG:HG2	3:A:1112:HOH:O	2.04	0.56
1:A:365:THR:HB	3:A:1338:HOH:O	2.06	0.56
1:B:392:LYS:HD2	1:B:393:ASP:N	2.21	0.56
1:B:177:GLU:CB	1:B:180:LEU:HD13	2.36	0.56
1:B:342:ALA:HB3	3:B:1247:HOH:O	2.06	0.56
1:A:272:ASN:HD22	1:A:272:ASN:C	2.10	0.56
1:A:348:MET:HG3	3:A:852:HOH:O	2.05	0.56
1:A:392:LYS:HD2	1:A:393:ASP:H	1.71	0.56

*Continued on next page...*

*Continued from previous page...*

Atom-1	Atom-2	Interatomic distance (Å)	Clash overlap (Å)
1:A:132:TYR:CE1	3:A:1219:HOH:O	2.53	0.55
1:A:71:LYS:O	1:A:72:GLN:HG3	2.06	0.55
1:A:388:GLN:CB	1:A:391:LYS:HB2	2.36	0.55
1:A:653:VAL:HG13	3:A:1534:HOH:O	2.06	0.55
1:A:41:LYS:HA	3:A:1185:HOH:O	2.05	0.55
1:A:388:GLN:HB3	1:A:391:LYS:HB2	1.88	0.55
1:B:103:ASN:HB3	3:B:1308:HOH:O	2.07	0.55
1:A:150:ASN:HB3	3:A:1253:HOH:O	2.05	0.55
1:B:272:ASN:HD22	1:B:272:ASN:C	2.10	0.55
1:B:277:SER:O	1:B:278:SER:CB	2.54	0.55
1:B:762:CYS:HB2	3:B:1544:HOH:O	2.06	0.55
1:A:61:ARG:HB2	3:A:1352:HOH:O	2.07	0.55
1:B:489:LYS:HD2	3:B:855:HOH:O	2.07	0.55
1:A:56:LYS:HE2	3:A:902:HOH:O	2.06	0.55
1:A:177:GLU:CB	1:A:180:LEU:HD13	2.36	0.54
1:A:277:SER:O	1:A:278:SER:CB	2.56	0.54
1:B:71:LYS:HE3	3:B:1340:HOH:O	2.06	0.54
1:A:214:LEU:O	1:A:214:LEU:HD12	2.08	0.54
1:A:693:GLU:HB3	3:A:865:HOH:O	2.05	0.54
1:A:203:TYR:HA	1:A:207:VAL:HG13	1.89	0.54
1:A:391:LYS:HG3	3:A:1518:HOH:O	2.08	0.54
1:B:65:ASP:CG	1:B:464:GLU:HB2	2.28	0.54
1:A:405:ILE:HG13	1:A:429:ARG:CD	2.37	0.54
1:B:39:SER:O	1:B:40:ARG:HD2	2.07	0.54
1:B:69:LEU:CD1	1:B:107:ILE:HD12	2.38	0.54
1:A:704:HIS:HE1	1:A:711:VAL:O	1.90	0.54
1:B:229:ASN:ND2	3:B:874:HOH:O	2.40	0.54
1:B:536:LYS:HG2	3:B:1043:HOH:O	2.06	0.54
1:B:697:GLN:HG3	3:B:1156:HOH:O	2.06	0.54
1:A:649:CYS:HB3	3:A:914:HOH:O	2.07	0.54
1:B:52:THR:HG22	3:B:1437:HOH:O	2.07	0.54
1:B:310:ARG:HH12	1:B:343:ARG:NH1	2.06	0.54
1:B:392:LYS:HD2	3:B:794:HOH:O	2.07	0.54
1:A:74:ASN:HB2	3:A:818:HOH:O	2.07	0.54
1:A:571:GLU:CD	1:A:760:LYS:HD3	2.28	0.53
1:B:177:GLU:HB2	1:B:180:LEU:HD13	1.89	0.53
1:B:571:GLU:CD	1:B:760:LYS:HD3	2.28	0.53
1:B:718:GLN:HA	1:B:718:GLN:HE21	1.73	0.53
1:A:69:LEU:CD1	1:A:107:ILE:HD12	2.38	0.53
1:B:616:MET:HE3	3:B:1026:HOH:O	2.08	0.53
1:B:654:ALA:HA	1:B:704:HIS:CD2	2.44	0.53

*Continued on next page...*

*Continued from previous page...*

Atom-1	Atom-2	Interatomic distance (Å)	Clash overlap (Å)
1:B:72:GLN:HB3	3:B:850:HOH:O	2.08	0.53
1:B:658:ARG:O	1:B:658:ARG:HG3	2.08	0.53
1:B:170:ASN:N	1:B:170:ASN:HD22	2.07	0.53
1:B:405:ILE:HG13	1:B:429:ARG:CD	2.39	0.53
1:B:597:ARG:HG2	3:B:820:HOH:O	2.09	0.53
1:A:76:ILE:HB	1:A:90:LEU:HD13	1.91	0.53
1:A:175:LYS:NZ	3:A:912:HOH:O	2.41	0.53
1:B:630:SER:HA	1:B:654:ALA:O	2.08	0.53
1:A:587:GLY:HA3	3:A:1036:HOH:O	2.08	0.53
1:A:361:GLU:HG2	3:A:872:HOH:O	2.09	0.53
1:A:516:PHE:CE2	1:A:523:LYS:HE2	2.44	0.53
1:A:543:LEU:HD12	1:A:567:LEU:HD13	1.91	0.53
1:A:172:ILE:N	1:A:186:THR:HG22	2.08	0.52
1:A:654:ALA:HA	1:A:704:HIS:CD2	2.45	0.52
1:B:370:SER:HB3	1:B:388:GLN:NE2	2.23	0.52
1:B:693:GLU:HB3	3:B:899:HOH:O	2.08	0.52
1:B:105:TYR:HB2	3:B:1231:HOH:O	2.08	0.52
1:A:170:ASN:N	1:A:170:ASN:HD22	2.07	0.52
1:A:392:LYS:HD2	1:A:393:ASP:N	2.25	0.52
1:B:704:HIS:HE1	1:B:711:VAL:O	1.93	0.52
1:A:184:ARG:HD2	1:A:187:TRP:CD2	2.44	0.52
1:A:377:ASN:CB	3:A:922:HOH:O	2.57	0.52
1:A:615:LYS:HE2	3:A:1296:HOH:O	2.09	0.52
1:B:302:ASP:HB3	1:B:314:GLN:HB2	1.90	0.52
1:B:520:ASN:O	1:B:521:GLU:HB2	2.08	0.52
1:B:341:VAL:O	1:B:342:ALA:CB	2.57	0.52
1:B:543:LEU:HD12	1:B:567:LEU:HD13	1.92	0.52
1:B:516:PHE:CE2	1:B:523:LYS:HE2	2.45	0.52
1:A:377:ASN:HB2	1:A:381:TYR:O	2.10	0.52
1:A:415:LEU:HB2	1:A:436:LEU:HD11	1.91	0.52
1:A:594:ILE:HA	3:A:1474:HOH:O	2.10	0.52
1:B:279:VAL:HG22	3:B:1004:HOH:O	2.08	0.51
1:B:54:ARG:HD3	3:B:1236:HOH:O	2.09	0.51
1:B:71:LYS:O	1:B:72:GLN:HG3	2.09	0.51
1:B:77:LEU:HD23	1:B:88:VAL:HA	1.92	0.51
1:B:459:VAL:HG22	1:B:460:SER:N	2.25	0.51
1:A:459:VAL:HG22	1:A:460:SER:N	2.25	0.51
1:A:302:ASP:HB3	1:A:314:GLN:HB2	1.91	0.51
1:A:65:ASP:CG	1:A:464:GLU:HB2	2.31	0.51
1:A:704:HIS:HD2	1:A:716:SER:OG	1.94	0.51
1:B:184:ARG:HD2	1:B:187:TRP:CD2	2.45	0.51

*Continued on next page...*

*Continued from previous page...*

Atom-1	Atom-2	Interatomic distance (Å)	Clash overlap (Å)
1:B:415:LEU:HB2	1:B:436:LEU:HD11	1.91	0.51
1:B:65:ASP:OD2	1:B:466:LYS:HB2	2.10	0.51
1:B:203:TYR:HA	1:B:207:VAL:HG13	1.91	0.51
1:B:319:ILE:HG12	3:B:1103:HOH:O	2.10	0.51
1:A:392:LYS:HG2	3:A:921:HOH:O	2.10	0.51
1:A:520:ASN:O	1:A:521:GLU:HB2	2.11	0.51
1:B:51:ASN:HB2	3:B:1053:HOH:O	2.10	0.51
1:B:242:SER:HB3	1:B:246:LEU:HD12	1.92	0.51
1:A:600:THR:O	1:A:603:VAL:HG13	2.11	0.50
1:B:697:GLN:NE2	3:B:1039:HOH:O	2.36	0.50
1:A:109:PRO:HB2	1:A:160:VAL:O	2.11	0.50
1:A:482:LEU:HG	1:A:494:LEU:HD11	1.94	0.50
1:A:514:LEU:HD22	1:A:525:TRP:HE3	1.76	0.50
1:A:370:SER:HB3	1:A:388:GLN:NE2	2.27	0.50
1:B:149:PRO:HB3	3:B:1427:HOH:O	2.11	0.50
1:B:704:HIS:HD2	1:B:716:SER:OG	1.94	0.50
1:A:528:MET:CE	1:A:530:LEU:HD21	2.41	0.50
1:B:528:MET:CE	1:B:530:LEU:HD21	2.42	0.50
1:B:377:ASN:HB3	1:B:379:GLU:H	1.77	0.50
1:B:514:LEU:HD12	1:B:557:THR:HG22	1.94	0.50
1:B:514:LEU:HD22	1:B:525:TRP:HE3	1.77	0.50
1:A:310:ARG:HH12	1:A:343:ARG:NH1	2.10	0.50
1:B:562:ASN:HB2	3:B:1076:HOH:O	2.12	0.50
1:A:76:ILE:HD12	1:A:90:LEU:HD11	1.94	0.49
1:A:197:GLY:C	1:A:213:ALA:HB3	2.32	0.49
1:A:77:LEU:HD23	1:A:88:VAL:HA	1.93	0.49
1:B:597:ARG:HG2	3:B:1341:HOH:O	2.12	0.49
1:A:362:PRO:HB3	3:A:1403:HOH:O	2.13	0.49
1:A:514:LEU:HD12	1:A:557:THR:HG22	1.94	0.49
1:B:76:ILE:HB	1:B:90:LEU:HD13	1.91	0.49
1:A:405:ILE:HG13	1:A:429:ARG:HD2	1.94	0.49
1:B:369:ASN:HA	1:B:389:ILE:HD13	1.95	0.49
1:B:76:ILE:HD12	1:B:90:LEU:HD11	1.95	0.49
1:A:341:VAL:O	1:A:342:ALA:CB	2.58	0.49
1:B:197:GLY:C	1:B:213:ALA:HB3	2.33	0.49
1:A:65:ASP:OD2	1:A:466:LYS:HB2	2.13	0.49
1:B:63:ILE:HG21	1:B:69:LEU:HG	1.95	0.49
1:B:90:LEU:HB2	3:B:1577:HOH:O	2.11	0.49
1:B:520:ASN:HB3	3:B:1487:HOH:O	2.12	0.49
1:A:718:GLN:HE21	1:A:718:GLN:HA	1.78	0.49
1:B:736:THR:HG23	3:B:767:HOH:O	2.12	0.49

*Continued on next page...*

*Continued from previous page...*

Atom-1	Atom-2	Interatomic distance (Å)	Clash overlap (Å)
1:A:587:GLY:CA	3:A:1036:HOH:O	2.60	0.48
1:B:528:MET:HE1	1:B:530:LEU:HD21	1.94	0.48
1:B:405:ILE:HG13	1:B:429:ARG:HD2	1.94	0.48
1:A:159:PRO:HD3	1:A:216:TRP:CB	2.43	0.48
1:B:597:ARG:HD2	3:B:1410:HOH:O	2.12	0.48
1:A:704:HIS:CE1	1:A:711:VAL:O	2.66	0.48
1:B:286:GLN:NE2	1:B:288:THR:HG22	2.28	0.48
1:B:138:ASN:ND2	3:B:1010:HOH:O	2.46	0.48
1:B:332:GLU:HB2	3:B:1257:HOH:O	2.13	0.48
1:A:74:ASN:HB3	1:A:92:ASN:HB3	1.96	0.48
1:B:56:LYS:HE2	3:B:1008:HOH:O	2.12	0.48
1:B:246:LEU:HD11	3:B:1621:HOH:O	2.13	0.48
1:A:42:THR:HG22	1:A:508:GLN:HB2	1.96	0.48
1:B:42:THR:HG22	1:B:508:GLN:HB2	1.94	0.48
1:A:92:ASN:N	1:A:92:ASN:HD22	2.10	0.48
1:A:336:ARG:HG2	3:A:1361:HOH:O	2.13	0.48
1:B:109:PRO:HB2	1:B:160:VAL:O	2.13	0.48
1:B:159:PRO:HD3	1:B:216:TRP:CB	2.44	0.48
1:A:516:PHE:CD2	1:A:523:LYS:HE2	2.49	0.47
1:A:715:GLN:HA	3:A:1462:HOH:O	2.14	0.47
1:B:57:LEU:HD21	3:B:1060:HOH:O	2.14	0.47
1:A:63:ILE:HG21	1:A:69:LEU:HG	1.95	0.47
1:A:81:ALA:O	1:A:492:ARG:NH2	2.43	0.47
1:B:125:ARG:HD3	3:B:1020:HOH:O	2.13	0.47
1:B:482:LEU:HG	1:B:494:LEU:HD11	1.95	0.47
1:B:600:THR:O	1:B:603:VAL:HG13	2.14	0.47
1:A:248:TYR:CZ	1:B:234:PRO:HB2	2.48	0.47
1:A:377:ASN:HB3	1:A:379:GLU:H	1.79	0.47
1:B:606:GLN:NE2	3:B:803:HOH:O	2.46	0.47
1:A:190:LYS:HD2	3:A:1483:HOH:O	2.14	0.47
1:A:532:PRO:O	1:A:533:HIS:HB2	2.15	0.47
1:A:658:ARG:HG2	1:A:661:TYR:CD2	2.50	0.47
1:B:81:ALA:O	1:B:492:ARG:NH2	2.43	0.47
1:A:236:ILE:O	1:A:253:ARG:HA	2.13	0.47
1:A:666:TYR:CE2	2:A:800:ADF:H41	2.50	0.47
1:B:55:LEU:HD23	1:B:500:LEU:CD2	2.45	0.47
1:B:136:ASP:CG	1:B:139:LYS:HG2	2.35	0.47
1:B:290:PRO:HG3	1:B:326:ASP:OD2	2.14	0.47
1:A:290:PRO:HG3	1:A:326:ASP:OD2	2.14	0.47
1:B:273:THR:O	1:B:276:LEU:HD22	2.15	0.47
1:B:327:ILE:HB	1:B:343:ARG:HB3	1.97	0.47

*Continued on next page...*



*Continued from previous page...*

Atom-1	Atom-2	Interatomic distance (Å)	Clash overlap (Å)
1:B:508:GLN:HG2	3:B:963:HOH:O	2.14	0.47
1:B:516:PHE:CD2	1:B:523:LYS:HE2	2.50	0.47
1:B:236:ILE:O	1:B:253:ARG:HA	2.14	0.47
1:B:388:GLN:HB2	1:B:391:LYS:HB2	1.97	0.47
1:A:140:ARG:HG2	1:A:140:ARG:HH11	1.80	0.47
1:A:154:TRP:CE2	1:A:212:SER:HB2	2.50	0.47
1:B:154:TRP:CE2	1:B:212:SER:HB2	2.50	0.46
1:B:370:SER:HB3	3:B:1425:HOH:O	2.14	0.46
1:A:71:LYS:HE2	3:A:1522:HOH:O	2.15	0.46
1:A:141:GLN:HB3	3:A:1499:HOH:O	2.16	0.46
1:A:382:ARG:NH2	3:A:869:HOH:O	2.47	0.46
1:B:251:THR:HB	3:B:1179:HOH:O	2.14	0.46
1:A:319:ILE:HG12	3:A:1179:HOH:O	2.14	0.46
1:B:51:ASN:HB2	3:B:1021:HOH:O	2.16	0.46
1:B:356:ARG:HD2	3:B:1360:HOH:O	2.16	0.46
1:A:242:SER:HB3	1:A:246:LEU:HD12	1.96	0.46
1:B:760:LYS:HG2	3:B:1609:HOH:O	2.15	0.46
1:A:74:ASN:HB3	1:A:92:ASN:CB	2.46	0.46
1:A:78:VAL:HG12	1:A:87:SER:O	2.16	0.46
1:A:343:ARG:HA	1:A:389:ILE:O	2.16	0.46
1:A:486:VAL:HG13	1:A:487:ASN:N	2.30	0.46
1:B:486:VAL:HG13	1:B:487:ASN:N	2.30	0.46
1:A:413:ASP:CB	3:A:1016:HOH:O	2.60	0.46
1:B:74:ASN:HB3	1:B:92:ASN:HB3	1.96	0.46
1:B:85:ASN:ND2	3:B:801:HOH:O	2.46	0.46
1:B:321:ASN:HB3	3:B:1159:HOH:O	2.15	0.46
1:A:273:THR:O	1:A:276:LEU:HD22	2.15	0.46
1:A:403:GLU:OE1	1:A:585:TYR:HA	2.15	0.46
1:B:377:ASN:HB2	1:B:381:TYR:O	2.14	0.46
1:A:741:GLY:O	1:A:742:ILE:C	2.54	0.46
1:B:272:ASN:HD21	1:B:274:ASP:HB2	1.81	0.46
1:B:289:ALA:HA	1:B:294:LEU:HD11	1.98	0.46
1:A:369:ASN:HA	1:A:389:ILE:HD13	1.96	0.46
1:A:472:CYS:O	1:A:478:PRO:HA	2.15	0.46
1:B:158:SER:HB3	1:B:163:LYS:HB2	1.98	0.46
1:B:403:GLU:OE1	1:B:585:TYR:HA	2.15	0.46
1:B:472:CYS:O	1:B:478:PRO:HA	2.16	0.46
1:A:289:ALA:HA	1:A:294:LEU:HD11	1.98	0.46
1:B:726:VAL:CG1	1:B:728:VAL:HG23	2.42	0.46
1:B:704:HIS:CE1	1:B:711:VAL:O	2.69	0.45
1:A:286:GLN:NE2	1:A:288:THR:HG22	2.31	0.45

*Continued on next page...*

*Continued from previous page...*

Atom-1	Atom-2	Interatomic distance (Å)	Clash overlap (Å)
1:B:183:TYR:CD1	1:B:276:LEU:HB3	2.50	0.45
1:B:310:ARG:HG3	1:B:329:ASP:OD1	2.16	0.45
1:A:136:ASP:CG	1:A:139:LYS:HG2	2.36	0.45
1:A:672:GLY:HA2	3:A:1020:HOH:O	2.16	0.45
1:B:74:ASN:HB3	1:B:92:ASN:CB	2.46	0.45
1:A:336:ARG:NH1	3:A:1422:HOH:O	2.49	0.45
1:A:393:ASP:HB2	3:A:1121:HOH:O	2.16	0.45
1:A:726:VAL:CG1	1:A:728:VAL:HG23	2.43	0.45
1:B:92:ASN:N	1:B:92:ASN:HD22	2.14	0.45
1:A:39:SER:N	3:A:1068:HOH:O	2.50	0.45
1:B:293:MET:HG3	1:B:298:HIS:CB	2.47	0.45
1:A:55:LEU:HD23	1:A:500:LEU:CD2	2.46	0.45
1:A:293:MET:HG3	1:A:298:HIS:CB	2.47	0.45
1:A:622:LYS:HD3	3:A:1138:HOH:O	2.16	0.45
1:B:451:PRO:HD2	3:B:1556:HOH:O	2.17	0.45
1:B:532:PRO:O	1:B:533:HIS:HB2	2.17	0.45
1:B:741:GLY:O	1:B:742:ILE:C	2.55	0.45
1:A:392:LYS:HE3	3:A:1518:HOH:O	2.16	0.45
1:A:528:MET:HE1	1:A:530:LEU:HD21	1.97	0.45
1:B:75:ASN:HB3	1:B:92:ASN:N	2.32	0.45
1:B:140:ARG:HH11	1:B:140:ARG:HG2	1.82	0.45
1:B:343:ARG:HD2	3:B:873:HOH:O	2.16	0.45
1:B:392:LYS:HE3	3:B:1593:HOH:O	2.16	0.45
1:A:243:ASP:HB3	3:A:920:HOH:O	2.17	0.45
1:B:325:MET:O	1:B:344:GLN:HA	2.17	0.45
1:B:379:GLU:HG2	3:B:1440:HOH:O	2.17	0.45
1:B:761:GLN:HE21	1:B:761:GLN:HB3	1.60	0.45
1:A:415:LEU:C	1:A:415:LEU:HD13	2.37	0.45
1:B:78:VAL:HG12	1:B:87:SER:O	2.17	0.45
1:B:597:ARG:HG3	1:B:600:THR:HG21	1.99	0.45
1:A:684:ARG:NH1	3:A:1107:HOH:O	2.51	0.44
1:A:158:SER:HB3	1:A:163:LYS:HB2	1.99	0.44
1:B:60:LEU:C	1:B:60:LEU:HD12	2.37	0.44
1:A:152:THR:HG21	1:A:155:VAL:HG22	2.00	0.44
1:A:183:TYR:CD1	1:A:276:LEU:HB3	2.52	0.44
1:A:193:ILE:CG2	1:A:194:ILE:HD12	2.44	0.44
1:A:310:ARG:HG3	1:A:329:ASP:OD1	2.18	0.44
1:A:597:ARG:HG3	1:A:600:THR:HG21	1.99	0.44
1:A:664:SER:HB2	1:A:668:GLU:OE2	2.18	0.44
1:B:440:THR:O	1:B:440:THR:HG22	2.18	0.44
1:B:466:LYS:HE2	3:B:1483:HOH:O	2.17	0.44

*Continued on next page...*

*Continued from previous page...*

Atom-1	Atom-2	Interatomic distance (Å)	Clash overlap (Å)
1:B:336:ARG:HB2	3:B:1586:HOH:O	2.17	0.44
1:B:495:GLU:HA	3:B:1256:HOH:O	2.17	0.44
1:B:165:ALA:HB2	1:B:216:TRP:CZ2	2.53	0.44
1:B:310:ARG:NH1	1:B:329:ASP:OD1	2.51	0.44
1:A:310:ARG:NH1	1:A:329:ASP:OD1	2.50	0.44
1:A:327:ILE:HB	1:A:343:ARG:HB3	1.99	0.44
1:A:516:PHE:CD2	1:A:523:LYS:HB2	2.53	0.44
1:A:165:ALA:HB2	1:A:216:TRP:CZ2	2.53	0.44
1:A:334:SER:HB3	1:A:336:ARG:HE	1.83	0.44
1:A:414:TYR:HA	1:A:436:LEU:HD13	1.99	0.44
1:A:156:THR:HG21	1:A:214:LEU:HD11	1.98	0.44
1:B:156:THR:HG21	1:B:214:LEU:HD11	2.00	0.44
1:B:308:GLN:HG2	3:B:1349:HOH:O	2.17	0.44
1:A:92:ASN:N	1:A:92:ASN:ND2	2.66	0.43
1:A:125:ARG:O	1:A:125:ARG:HG3	2.16	0.43
1:A:317:ARG:HD3	3:A:1424:HOH:O	2.19	0.43
1:A:325:MET:O	1:A:344:GLN:HA	2.17	0.43
1:B:39:SER:O	1:B:40:ARG:O	2.36	0.43
1:B:125:ARG:O	1:B:125:ARG:HG3	2.18	0.43
1:B:343:ARG:HG3	3:B:1247:HOH:O	2.16	0.43
1:B:516:PHE:CD2	1:B:523:LYS:HB2	2.53	0.43
1:B:718:GLN:HA	1:B:718:GLN:NE2	2.33	0.43
1:B:54:ARG:HE	1:B:54:ARG:HB2	1.51	0.43
1:A:75:ASN:HB3	1:A:92:ASN:N	2.33	0.43
1:A:60:LEU:HD12	1:A:60:LEU:C	2.38	0.43
1:A:194:ILE:HD12	1:A:194:ILE:N	2.34	0.43
1:B:145:GLU:HG3	3:B:1262:HOH:O	2.18	0.43
1:B:334:SER:HB3	1:B:336:ARG:HE	1.84	0.43
1:A:160:VAL:HG23	1:A:161:GLY:N	2.34	0.43
1:B:56:LYS:HG2	3:B:1579:HOH:O	2.18	0.43
1:A:203:TYR:HA	1:A:207:VAL:CG1	2.48	0.43
1:B:285:ILE:HD12	1:B:285:ILE:N	2.34	0.43
1:A:40:ARG:HG3	3:A:1037:HOH:O	2.18	0.43
1:A:72:GLN:HB2	1:A:75:ASN:O	2.19	0.43
1:A:388:GLN:HB2	1:A:391:LYS:HB2	2.01	0.43
1:A:510:PRO:HD3	1:A:569:SER:HB2	2.01	0.43
1:B:39:SER:O	1:B:508:GLN:NE2	2.51	0.43
1:B:712:HIS:HB3	3:B:771:HOH:O	2.18	0.43
1:A:57:LEU:HD23	3:A:866:HOH:O	2.18	0.42
1:A:378:GLU:HB3	3:A:1492:HOH:O	2.19	0.42
1:A:661:TYR:CE2	3:A:1462:HOH:O	2.56	0.42

*Continued on next page...*

*Continued from previous page...*

Atom-1	Atom-2	Interatomic distance (Å)	Clash overlap (Å)
1:A:39:SER:O	1:A:508:GLN:NE2	2.52	0.42
1:B:71:LYS:HB2	3:B:1558:HOH:O	2.19	0.42
1:A:280:THR:HG23	3:A:816:HOH:O	2.20	0.42
1:B:193:ILE:CG2	1:B:194:ILE:HD12	2.43	0.42
1:A:63:ILE:CG2	1:A:69:LEU:HG	2.49	0.42
1:A:147:ARG:HD3	3:A:1495:HOH:O	2.19	0.42
1:A:343:ARG:HD2	3:A:1137:HOH:O	2.19	0.42
1:A:440:THR:O	1:A:440:THR:HG22	2.20	0.42
1:B:617:GLY:N	3:B:1210:HOH:O	2.37	0.42
1:B:414:TYR:HA	1:B:436:LEU:HD13	2.02	0.42
1:B:664:SER:HB2	1:B:668:GLU:OE2	2.19	0.42
1:B:110:ASP:C	1:B:112:GLN:H	2.23	0.42
1:B:415:LEU:HD13	1:B:415:LEU:C	2.40	0.42
1:B:446:SER:HB2	1:B:457:TYR:CE1	2.54	0.42
1:B:616:MET:HE3	1:B:618:PHE:HZ	1.84	0.42
1:B:658:ARG:HG2	1:B:661:TYR:CD2	2.53	0.42
1:B:236:ILE:CG2	1:B:254:VAL:HG13	2.50	0.42
1:A:41:LYS:HG3	3:A:1149:HOH:O	2.18	0.42
1:A:319:ILE:HD12	3:A:1020:HOH:O	2.19	0.42
1:A:471:ARG:NH2	3:A:1508:HOH:O	2.53	0.42
1:A:614:SER:HB2	1:A:621:ASN:HB3	2.01	0.42
1:B:123:GLN:HG2	1:B:124:TRP:CD2	2.55	0.42
1:B:510:PRO:HD3	1:B:569:SER:HB2	2.02	0.42
1:A:116:LEU:O	1:A:132:TYR:HA	2.20	0.42
1:A:258:LYS:HD2	1:B:247:GLN:HG2	2.02	0.42
1:A:64:SER:HA	1:A:463:LYS:HG3	2.02	0.42
1:A:186:THR:HG21	1:A:196:ASN:CB	2.50	0.42
1:A:207:VAL:HG22	1:A:208:PHE:N	2.35	0.42
1:A:248:TYR:HA	1:A:249:PRO:HD3	1.96	0.42
1:A:351:THR:HG21	3:A:1369:HOH:O	2.19	0.42
1:B:152:THR:HG21	1:B:155:VAL:HG22	2.01	0.42
1:B:325:MET:CE	1:B:327:ILE:HD11	2.50	0.42
1:A:123:GLN:HG2	1:A:124:TRP:CD2	2.55	0.41
1:A:325:MET:CE	1:A:327:ILE:HD11	2.49	0.41
1:A:736:THR:HG23	3:B:797:HOH:O	2.20	0.41
1:B:289:ALA:CB	1:B:290:PRO:CA	2.80	0.41
1:A:214:LEU:HD12	3:A:1097:HOH:O	2.19	0.41
1:B:159:PRO:HD3	1:B:216:TRP:HB3	2.02	0.41
1:B:514:LEU:HD22	1:B:525:TRP:CE3	2.55	0.41
1:A:236:ILE:CG2	1:A:254:VAL:HG13	2.50	0.41
1:A:401:THR:HG22	3:A:1355:HOH:O	2.20	0.41

*Continued on next page...*

*Continued from previous page...*

Atom-1	Atom-2	Interatomic distance (Å)	Clash overlap (Å)
1:A:446:SER:HB2	1:A:457:TYR:CE1	2.55	0.41
1:A:690:SER:HA	3:A:1375:HOH:O	2.19	0.41
1:B:63:ILE:CG2	1:B:69:LEU:HG	2.51	0.41
1:B:72:GLN:HB2	1:B:75:ASN:O	2.19	0.41
1:B:150:ASN:ND2	3:B:885:HOH:O	2.50	0.41
1:B:194:ILE:HD12	1:B:194:ILE:N	2.35	0.41
1:B:616:MET:HE3	1:B:618:PHE:CZ	2.55	0.41
1:A:105:TYR:HB2	3:A:1522:HOH:O	2.19	0.41
1:B:614:SER:HB2	1:B:621:ASN:HB3	2.01	0.41
1:A:579:ASP:HB3	1:A:583:SER:OG	2.20	0.41
1:B:55:LEU:HD23	1:B:500:LEU:HD22	2.02	0.41
1:B:203:TYR:HA	1:B:207:VAL:CG1	2.51	0.41
1:B:207:VAL:HG22	1:B:208:PHE:N	2.34	0.41
1:B:219:ASN:ND2	3:B:944:HOH:O	2.52	0.41
1:B:343:ARG:HA	1:B:389:ILE:O	2.20	0.41
1:B:377:ASN:HB2	1:B:381:TYR:H	1.86	0.41
1:B:612:GLN:HE21	1:B:612:GLN:HB3	1.67	0.41
1:A:193:ILE:HG22	1:A:194:ILE:CD1	2.46	0.41
1:A:159:PRO:HD3	1:A:216:TRP:HB3	2.02	0.41
1:A:272:ASN:HD21	1:A:274:ASP:HB2	1.85	0.41
1:A:514:LEU:HD22	1:A:525:TRP:CE3	2.54	0.41
1:A:588:ASP:O	1:A:592:HIS:HB2	2.21	0.41
1:A:125:ARG:HG2	1:A:126:HIS:NE2	2.35	0.41
1:A:381:TYR:HB2	3:A:922:HOH:O	2.21	0.41
1:B:160:VAL:HG23	1:B:161:GLY:N	2.35	0.41
1:A:418:ILE:HD13	1:A:431:LEU:HA	2.03	0.41
1:B:317:ARG:HG2	3:B:857:HOH:O	2.19	0.41
1:B:528:MET:HB3	1:B:528:MET:HE2	1.85	0.41
1:A:140:ARG:HG2	1:A:140:ARG:NH1	2.36	0.41
1:A:365:THR:HG22	3:A:1459:HOH:O	2.20	0.41
1:A:111:GLY:O	1:A:137:LEU:HD12	2.22	0.40
1:A:166:TYR:HE2	3:A:912:HOH:O	2.03	0.40
1:A:535:ASP:OD1	1:A:537:SER:HB2	2.22	0.40
1:A:65:ASP:HB3	1:A:66:HIS:CE1	2.57	0.40
1:B:92:ASN:N	1:B:92:ASN:ND2	2.69	0.40
1:B:92:ASN:HD22	1:B:93:SER:N	2.18	0.40
1:B:116:LEU:O	1:B:132:TYR:HA	2.20	0.40
1:B:546:VAL:HG22	1:B:547:TYR:N	2.34	0.40
1:A:92:ASN:HD22	1:A:93:SER:N	2.19	0.40
1:A:658:ARG:HB2	1:A:687:THR:HG22	2.04	0.40
1:B:291:ALA:O	1:B:295:ILE:HG23	2.22	0.40

*Continued on next page...*

Continued from previous page...

Atom-1	Atom-2	Interatomic distance (Å)	Clash overlap (Å)
1:B:410:LEU:HD13	1:B:415:LEU:CD2	2.42	0.40
1:B:677:GLU:CD	1:B:677:GLU:N	2.73	0.40
1:A:177:GLU:HA	1:A:178:PRO:HD3	1.98	0.40
1:A:236:ILE:HG23	1:A:254:VAL:HG13	2.03	0.40
1:B:62:TRP:CG	1:B:462:SER:HA	2.57	0.40

There are no symmetry-related clashes.

## 5.3 Torsion angles [i](#)

### 5.3.1 Protein backbone [i](#)

In the following table, the Percentiles column shows the percent Ramachandran outliers of the chain as a percentile score with respect to all X-ray entries followed by that with respect to entries of similar resolution.

The Analysed column shows the number of residues for which the backbone conformation was analysed, and the total number of residues.

Mol	Chain	Analysed	Favoured	Allowed	Outliers	Percentiles	
1	A	724/726 (100%)	680 (94%)	39 (5%)	5 (1%)	22	32
1	B	724/726 (100%)	682 (94%)	36 (5%)	6 (1%)	19	29
All	All	1448/1452 (100%)	1362 (94%)	75 (5%)	11 (1%)	19	29

All (11) Ramachandran outliers are listed below:

Mol	Chain	Res	Type
1	A	40	ARG
1	A	278	SER
1	B	40	ARG
1	B	278	SER
1	A	289	ALA
1	A	342	ALA
1	B	289	ALA
1	B	342	ALA
1	A	320	GLN
1	B	320	GLN
1	B	389	ILE

### 5.3.2 Protein sidechains [i](#)

In the following table, the Percentiles column shows the percent sidechain outliers of the chain as a percentile score with respect to all X-ray entries followed by that with respect to entries of similar resolution.

The Analysed column shows the number of residues for which the sidechain conformation was analysed, and the total number of residues.

Mol	Chain	Analysed	Rotameric	Outliers	Percentiles	
1	A	651/651 (100%)	615 (94%)	36 (6%)	21	35
1	B	651/651 (100%)	615 (94%)	36 (6%)	21	35
All	All	1302/1302 (100%)	1230 (94%)	72 (6%)	21	35

All (72) residues with a non-rotameric sidechain are listed below:

Mol	Chain	Res	Type
1	A	40	ARG
1	A	90	LEU
1	A	92	ASN
1	A	141	GLN
1	A	147	ARG
1	A	170	ASN
1	A	207	VAL
1	A	230	ASP
1	A	246	LEU
1	A	253	ARG
1	A	254	VAL
1	A	272	ASN
1	A	276	LEU
1	A	303	VAL
1	A	313	LEU
1	A	341	VAL
1	A	388	GLN
1	A	392	LYS
1	A	448	GLU
1	A	472	CYS
1	A	482	LEU
1	A	514	LEU
1	A	536	LYS
1	A	537	SER
1	A	543	LEU
1	A	561	LEU
1	A	581	ARG

*Continued on next page...*

*Continued from previous page...*

<b>Mol</b>	<b>Chain</b>	<b>Res</b>	<b>Type</b>
1	A	603	VAL
1	A	616	MET
1	A	658	ARG
1	A	679	ASN
1	A	689	MET
1	A	701	LEU
1	A	702	LEU
1	A	736	THR
1	A	761	GLN
1	B	40	ARG
1	B	90	LEU
1	B	92	ASN
1	B	141	GLN
1	B	147	ARG
1	B	170	ASN
1	B	207	VAL
1	B	230	ASP
1	B	246	LEU
1	B	253	ARG
1	B	254	VAL
1	B	272	ASN
1	B	276	LEU
1	B	303	VAL
1	B	313	LEU
1	B	385	CYS
1	B	388	GLN
1	B	392	LYS
1	B	448	GLU
1	B	472	CYS
1	B	482	LEU
1	B	514	LEU
1	B	536	LYS
1	B	537	SER
1	B	543	LEU
1	B	561	LEU
1	B	581	ARG
1	B	603	VAL
1	B	616	MET
1	B	658	ARG
1	B	679	ASN
1	B	689	MET
1	B	701	LEU

*Continued on next page...*



*Continued from previous page...*

Mol	Chain	Res	Type
1	B	702	LEU
1	B	736	THR
1	B	761	GLN

Sometimes sidechains can be flipped to improve hydrogen bonding and reduce clashes. All (50) such sidechains are listed below:

Mol	Chain	Res	Type
1	A	72	GLN
1	A	92	ASN
1	A	138	ASN
1	A	169	ASN
1	A	170	ASN
1	A	247	GLN
1	A	272	ASN
1	A	281	ASN
1	A	314	GLN
1	A	338	ASN
1	A	344	GLN
1	A	345	HIS
1	A	369	ASN
1	A	388	GLN
1	A	435	GLN
1	A	483	HIS
1	A	487	ASN
1	A	508	GLN
1	A	533	HIS
1	A	606	GLN
1	A	612	GLN
1	A	679	ASN
1	A	694	ASN
1	A	704	HIS
1	A	718	GLN
1	A	761	GLN
1	B	72	GLN
1	B	92	ASN
1	B	138	ASN
1	B	169	ASN
1	B	170	ASN
1	B	247	GLN
1	B	272	ASN
1	B	286	GLN
1	B	314	GLN

*Continued on next page...*

*Continued from previous page...*

Mol	Chain	Res	Type
1	B	344	GLN
1	B	369	ASN
1	B	388	GLN
1	B	435	GLN
1	B	483	HIS
1	B	487	ASN
1	B	508	GLN
1	B	533	HIS
1	B	606	GLN
1	B	612	GLN
1	B	679	ASN
1	B	694	ASN
1	B	704	HIS
1	B	718	GLN
1	B	761	GLN

### 5.3.3 RNA [i](#)

There are no RNA molecules in this entry.

### 5.4 Non-standard residues in protein, DNA, RNA chains [i](#)

There are no non-standard protein/DNA/RNA residues in this entry.

### 5.5 Carbohydrates [i](#)

There are no monosaccharides in this entry.

### 5.6 Ligand geometry [i](#)

1 ligand is modelled in this entry.

In the following table, the Counts columns list the number of bonds (or angles) for which Mogul statistics could be retrieved, the number of bonds (or angles) that are observed in the model and the number of bonds (or angles) that are defined in the Chemical Component Dictionary. The Link column lists molecule types, if any, to which the group is linked. The Z score for a bond length (or angle) is the number of standard deviations the observed value is removed from the expected value. A bond length (or angle) with  $|Z| > 2$  is considered an outlier worth inspection. RMSZ is the root-mean-square of all Z scores of the bond lengths (or angles).

Mol	Type	Chain	Res	Link	Bond lengths			Bond angles		
					Counts	RMSZ	# Z  > 2	Counts	RMSZ	# Z  > 2
2	ADF	A	800	1	31,31,31	1.49	7 (22%)	41,45,45	1.05	2 (4%)

In the following table, the Chirals column lists the number of chiral outliers, the number of chiral centers analysed, the number of these observed in the model and the number defined in the Chemical Component Dictionary. Similar counts are reported in the Torsion and Rings columns. '-' means no outliers of that kind were identified.

Mol	Type	Chain	Res	Link	Chirals	Torsions	Rings
2	ADF	A	800	1	-	2/25/44/44	0/3/3/3

All (7) bond length outliers are listed below:

Mol	Chain	Res	Type	Atoms	Z	Observed(Å)	Ideal(Å)
2	A	800	ADF	C10-C16	3.43	1.46	1.39
2	A	800	ADF	C17-C16	2.81	1.43	1.39
2	A	800	ADF	C21-N22	-2.68	1.35	1.48
2	A	800	ADF	C1-N8	2.42	1.39	1.34
2	A	800	ADF	C24-C16	2.26	1.58	1.54
2	A	800	ADF	O28-C23	-2.20	1.24	1.30
2	A	800	ADF	C19-C18	2.00	1.42	1.39

All (2) bond angle outliers are listed below:

Mol	Chain	Res	Type	Atoms	Z	Observed(°)	Ideal(°)
2	A	800	ADF	C9-O11-C10	2.67	124.14	118.21
2	A	800	ADF	C21-C12-N8	2.04	117.68	110.64

There are no chirality outliers.

All (2) torsion outliers are listed below:

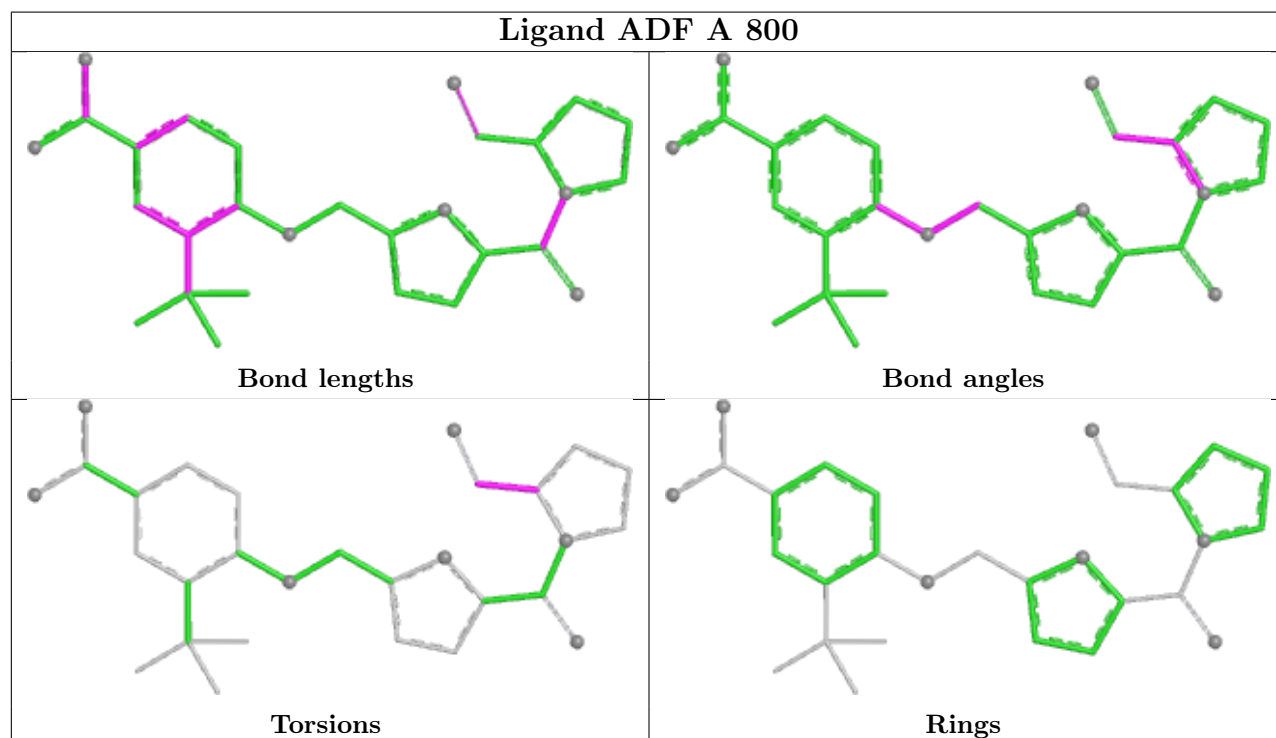
Mol	Chain	Res	Type	Atoms
2	A	800	ADF	N8-C12-C21-N22
2	A	800	ADF	C13-C12-C21-N22

There are no ring outliers.

1 monomer is involved in 1 short contact:

Mol	Chain	Res	Type	Clashes	Symm-Clashes
2	A	800	ADF	1	0

The following is a two-dimensional graphical depiction of Mogul quality analysis of bond lengths, bond angles, torsion angles, and ring geometry for all instances of the Ligand of Interest. In addition, ligands with molecular weight > 250 and outliers as shown on the validation Tables will also be included. For torsion angles, if less than 5% of the Mogul distribution of torsion angles is within 10 degrees of the torsion angle in question, then that torsion angle is considered an outlier. Any bond that is central to one or more torsion angles identified as an outlier by Mogul will be highlighted in the graph. For rings, the root-mean-square deviation (RMSD) between the ring in question and similar rings identified by Mogul is calculated over all ring torsion angles. If the average RMSD is greater than 60 degrees and the minimal RMSD between the ring in question and any Mogul-identified rings is also greater than 60 degrees, then that ring is considered an outlier. The outliers are highlighted in purple. The color gray indicates Mogul did not find sufficient equivalents in the CSD to analyse the geometry.



## 5.7 Other polymers [\(i\)](#)

There are no such residues in this entry.

## 5.8 Polymer linkage issues [\(i\)](#)

There are no chain breaks in this entry.

## 6 Fit of model and data

### 6.1 Protein, DNA and RNA chains

In the following table, the column labelled ‘#RSRZ > 2’ contains the number (and percentage) of RSRZ outliers, followed by percent RSRZ outliers for the chain as percentile scores relative to all X-ray entries and entries of similar resolution. The OWAB column contains the minimum, median, 95<sup>th</sup> percentile and maximum values of the occupancy-weighted average B-factor per residue. The column labelled ‘Q < 0.9’ lists the number of (and percentage) of residues with an average occupancy less than 0.9.

Mol	Chain	Analysed	<RSRZ>	#RSRZ>2	OWAB(Å <sup>2</sup> )	Q<0.9
1	A	726/726 (100%)	-0.17	16 (2%) 62 60	19, 37, 74, 117	0
1	B	726/726 (100%)	-0.28	17 (2%) 60 58	16, 32, 71, 121	0
All	All	1452/1452 (100%)	-0.22	33 (2%) 60 58	16, 35, 73, 121	0

All (33) RSRZ outliers are listed below:

Mol	Chain	Res	Type	RSRZ
1	B	39	SER	9.1
1	A	39	SER	6.6
1	B	73	GLU	5.6
1	B	390	ASP	5.1
1	A	73	GLU	4.5
1	A	521	GLU	3.6
1	B	92	ASN	3.3
1	A	74	ASN	3.3
1	B	279	VAL	3.1
1	A	72	GLN	3.0
1	A	334	SER	3.0
1	A	40	ARG	3.0
1	B	389	ILE	2.9
1	A	98	PHE	2.8
1	B	340	LEU	2.6
1	A	99	GLY	2.6
1	A	96	ASP	2.6
1	A	333	SER	2.6
1	B	74	ASN	2.5
1	B	487	ASN	2.4
1	A	341	VAL	2.4
1	B	764	SER	2.2
1	A	277	SER	2.2
1	A	97	GLU	2.2

*Continued on next page...*

*Continued from previous page...*

Mol	Chain	Res	Type	RSRZ
1	B	278	SER	2.2
1	B	96	ASP	2.2
1	B	392	LYS	2.1
1	B	280	THR	2.1
1	B	91	GLU	2.1
1	B	333	SER	2.1
1	A	280	THR	2.0
1	B	97	GLU	2.0
1	A	502	LYS	2.0

## 6.2 Non-standard residues in protein, DNA, RNA chains [i](#)

There are no non-standard protein/DNA/RNA residues in this entry.

## 6.3 Carbohydrates [i](#)

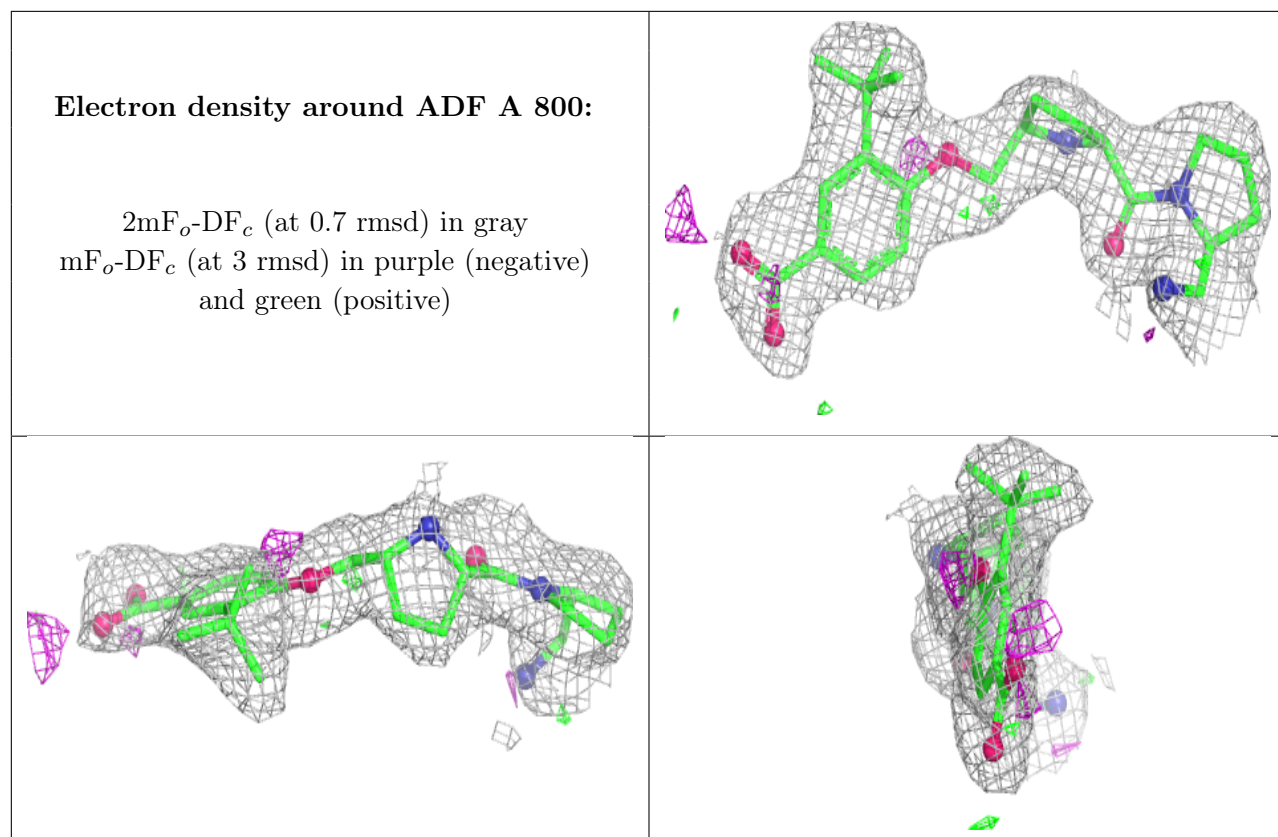
There are no monosaccharides in this entry.

## 6.4 Ligands [i](#)

In the following table, the Atoms column lists the number of modelled atoms in the group and the number defined in the chemical component dictionary. The B-factors column lists the minimum, median, 95<sup>th</sup> percentile and maximum values of B factors of atoms in the group. The column labelled 'Q< 0.9' lists the number of atoms with occupancy less than 0.9.

Mol	Type	Chain	Res	Atoms	RSCC	RSR	B-factors( $\text{\AA}^2$ )	Q<0.9
2	ADF	A	800	29/29	0.85	0.20	42,42,42,42	0

The following is a graphical depiction of the model fit to experimental electron density of all instances of the Ligand of Interest. In addition, ligands with molecular weight > 250 and outliers as shown on the geometry validation Tables will also be included. Each fit is shown from different orientation to approximate a three-dimensional view.



## 6.5 Other polymers [i](#)

There are no such residues in this entry.