



Full wwPDB X-ray Structure Validation Report ⓘ

Jun 15, 2024 – 06:58 AM EDT

PDB ID : 1ZUN
Title : Crystal Structure of a GTP-Regulated ATP Sulfurylase Heterodimer from *Pseudomonas syringae*
Authors : Mougous, J.D.; Lee, D.H.; Hubbard, S.C.; Schelle, M.W.; Vocadlo, D.J.; Berger, J.M.; Bertozzi, C.R.
Deposited on : 2005-05-31
Resolution : 2.70 Å(reported)

This is a Full wwPDB X-ray Structure Validation Report for a publicly released PDB entry.

We welcome your comments at validation@mail.wwpdb.org

A user guide is available at

<https://www.wwpdb.org/validation/2017/XrayValidationReportHelp>

with specific help available everywhere you see the ⓘ symbol.

The types of validation reports are described at

<http://www.wwpdb.org/validation/2017/FAQs#types>.

The following versions of software and data (see [references ⓘ](#)) were used in the production of this report:

MolProbity : 4.02b-467
Mogul : 2022.3.0, CSD as543be (2022)
Xtriage (Phenix) : 1.20.1
EDS : 2.37.1
buster-report : 1.1.7 (2018)
Percentile statistics : 20191225.v01 (using entries in the PDB archive December 25th 2019)
Refmac : 5.8.0158
CCP4 : 7.0.044 (Gargrove)
Ideal geometry (proteins) : Engh & Huber (2001)
Ideal geometry (DNA, RNA) : Parkinson et al. (1996)
Validation Pipeline (wwPDB-VP) : 2.37.1

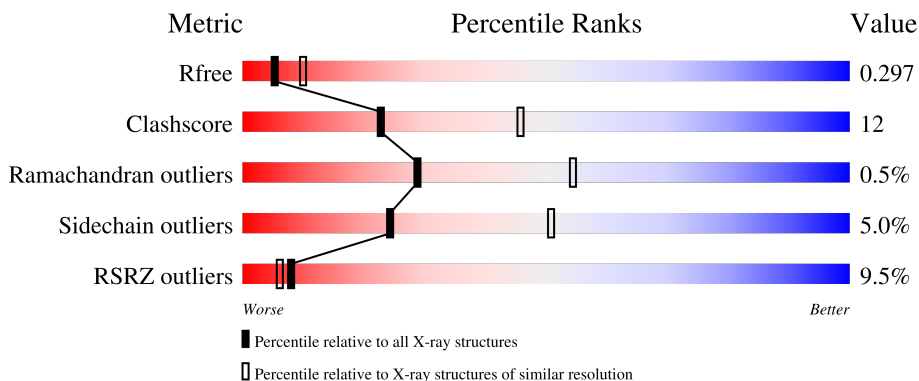
1 Overall quality at a glance

The following experimental techniques were used to determine the structure:

X-RAY DIFFRACTION

The reported resolution of this entry is 2.70 Å.

Percentile scores (ranging between 0-100) for global validation metrics of the entry are shown in the following graphic. The table shows the number of entries on which the scores are based.



Metric	Whole archive (#Entries)	Similar resolution (#Entries, resolution range(Å))
R_{free}	130704	2808 (2.70-2.70)
Clashscore	141614	3122 (2.70-2.70)
Ramachandran outliers	138981	3069 (2.70-2.70)
Sidechain outliers	138945	3069 (2.70-2.70)
RSRZ outliers	127900	2737 (2.70-2.70)

The table below summarises the geometric issues observed across the polymeric chains and their fit to the electron density. The red, orange, yellow and green segments of the lower bar indicate the fraction of residues that contain outliers for ≥ 3 , 2, 1 and 0 types of geometric quality criteria respectively. A grey segment represents the fraction of residues that are not modelled. The numeric value for each fraction is indicated below the corresponding segment, with a dot representing fractions $\leq 5\%$. The upper red bar (where present) indicates the fraction of residues that have poor fit to the electron density. The numeric value is given above the bar.

Mol	Chain	Length	Quality of chain
1	A	325	 10% 51% 10% • 37%
2	B	434	 5% 71% 17% • 9%

2 Entry composition

There are 7 unique types of molecules in this entry. The entry contains 4836 atoms, of which 0 are hydrogens and 0 are deuteriums.

In the tables below, the ZeroOcc column contains the number of atoms modelled with zero occupancy, the AltConf column contains the number of residues with at least one atom in alternate conformation and the Trace column contains the number of residues modelled with at most 2 atoms.

- Molecule 1 is a protein called Sulfate adenylyltransferase subunit 2.

Mol	Chain	Residues	Atoms					ZeroOcc	AltConf	Trace
			Total	C	N	O	Se			
1	A	204	1661	1065	293	295	8	0	0	0

There are 27 discrepancies between the modelled and reference sequences:

Chain	Residue	Modelled	Actual	Comment	Reference
A	-18	GLY	-	CLONING ARTIFACT	UNP Q87WW0
A	-17	SER	-	CLONING ARTIFACT	UNP Q87WW0
A	-16	SER	-	CLONING ARTIFACT	UNP Q87WW0
A	-15	HIS	-	CLONING ARTIFACT	UNP Q87WW0
A	-14	HIS	-	CLONING ARTIFACT	UNP Q87WW0
A	-13	HIS	-	CLONING ARTIFACT	UNP Q87WW0
A	-12	HIS	-	CLONING ARTIFACT	UNP Q87WW0
A	-11	HIS	-	CLONING ARTIFACT	UNP Q87WW0
A	-10	HIS	-	CLONING ARTIFACT	UNP Q87WW0
A	-9	SER	-	CLONING ARTIFACT	UNP Q87WW0
A	-8	SER	-	CLONING ARTIFACT	UNP Q87WW0
A	-7	GLY	-	CLONING ARTIFACT	UNP Q87WW0
A	-6	LEU	-	CLONING ARTIFACT	UNP Q87WW0
A	-5	VAL	-	CLONING ARTIFACT	UNP Q87WW0
A	-4	PRO	-	CLONING ARTIFACT	UNP Q87WW0
A	-3	ARG	-	CLONING ARTIFACT	UNP Q87WW0
A	-2	GLY	-	CLONING ARTIFACT	UNP Q87WW0
A	-1	SER	-	CLONING ARTIFACT	UNP Q87WW0
A	0	HIS	-	CLONING ARTIFACT	UNP Q87WW0
A	1	MSE	MET	MODIFIED RESIDUE	UNP Q87WW0
A	31	MSE	MET	MODIFIED RESIDUE	UNP Q87WW0
A	42	MSE	MET	MODIFIED RESIDUE	UNP Q87WW0
A	60	MSE	MET	MODIFIED RESIDUE	UNP Q87WW0
A	71	MSE	MET	MODIFIED RESIDUE	UNP Q87WW0
A	78	MSE	MET	MODIFIED RESIDUE	UNP Q87WW0
A	82	MSE	MET	MODIFIED RESIDUE	UNP Q87WW0
A	113	MSE	MET	MODIFIED RESIDUE	UNP Q87WW0

- Molecule 2 is a protein called sulfate adenylyl transferase, subunit 1/adenylylsulfate kinase.

Mol	Chain	Residues	Atoms					ZeroOcc	AltConf	Trace	
			Total	C	N	O	S				Se
2	B	394	3027	1910	522	581	2	12	0	0	0

There are 12 discrepancies between the modelled and reference sequences:

Chain	Residue	Modelled	Actual	Comment	Reference
B	24	MSE	MET	MODIFIED RESIDUE	GB 28871567
B	50	MSE	MET	MODIFIED RESIDUE	GB 28871567
B	121	MSE	MET	MODIFIED RESIDUE	GB 28871567
B	167	MSE	MET	MODIFIED RESIDUE	GB 28871567
B	198	MSE	MET	MODIFIED RESIDUE	GB 28871567
B	203	MSE	MET	MODIFIED RESIDUE	GB 28871567
B	227	MSE	MET	MODIFIED RESIDUE	GB 28871567
B	310	MSE	MET	MODIFIED RESIDUE	GB 28871567
B	338	MSE	MET	MODIFIED RESIDUE	GB 28871567
B	342	MSE	MET	MODIFIED RESIDUE	GB 28871567
B	347	MSE	MET	MODIFIED RESIDUE	GB 28871567
B	431	MSE	MET	MODIFIED RESIDUE	GB 28871567

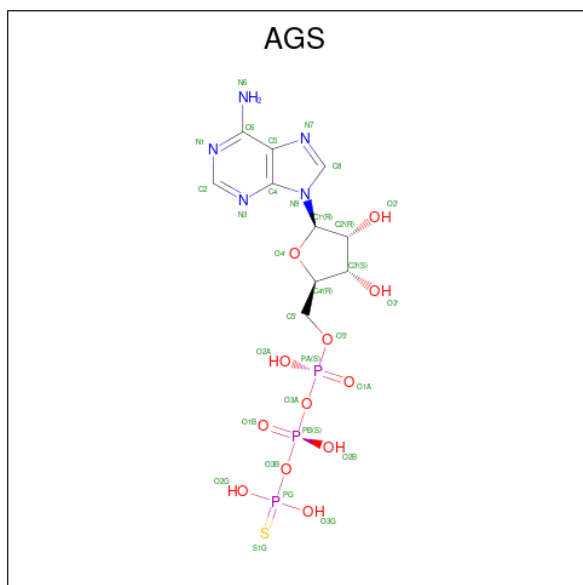
- Molecule 3 is MAGNESIUM ION (three-letter code: MG) (formula: Mg).

Mol	Chain	Residues	Atoms		ZeroOcc	AltConf
			Total	Mg		
3	A	1	1	1	0	0

- Molecule 4 is SODIUM ION (three-letter code: NA) (formula: Na).

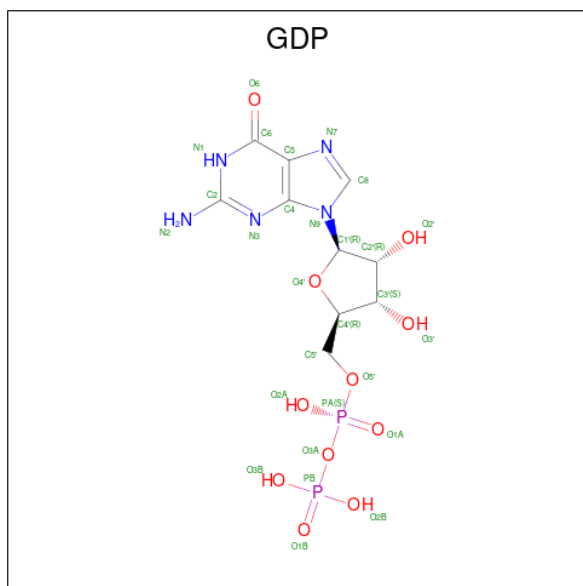
Mol	Chain	Residues	Atoms		ZeroOcc	AltConf
			Total	Na		
4	A	1	1	1	0	0

- Molecule 5 is PHOSPHOTHIOPHOSPHORIC ACID-ADENYLATE ESTER (three-letter code: AGS) (formula: C₁₀H₁₆N₅O₁₂P₃S).



Mol	Chain	Residues	Atoms					ZeroOcc	AltConf	
			Total	C	N	O	P			S
5	A	1	31	10	5	12	3	1	0	0

- Molecule 6 is GUANOSINE-5'-DIPHOSPHATE (three-letter code: GDP) (formula: $C_{10}H_{15}N_5O_{11}P_2$).



Mol	Chain	Residues	Atoms					ZeroOcc	AltConf
			Total	C	N	O	P		
6	B	1	28	10	5	11	2	0	0

- Molecule 7 is water.

Mol	Chain	Residues	Atoms		ZeroOcc	AltConf
7	A	29	Total 29	O 29	0	0
7	B	58	Total 58	O 58	0	0

4 Data and refinement statistics

Property	Value	Source
Space group	H 3	Depositor
Cell constants a, b, c, α , β , γ	110.07Å 110.07Å 171.00Å 90.00° 90.00° 120.00°	Depositor
Resolution (Å)	20.00 – 2.70 19.80 – 2.70	Depositor EDS
% Data completeness (in resolution range)	100.0 (20.00-2.70) 99.7 (19.80-2.70)	Depositor EDS
R_{merge}	0.07	Depositor
R_{sym}	0.07	Depositor
$\langle I/\sigma(I) \rangle$ ¹	3.54 (at 2.71Å)	Xtrriage
Refinement program	REFMAC 5.2.0005	Depositor
R, R_{free}	0.222 , 0.276 0.253 , 0.297	Depositor DCC
R_{free} test set	1091 reflections (5.17%)	wwPDB-VP
Wilson B-factor (Å ²)	42.3	Xtrriage
Anisotropy	0.016	Xtrriage
Bulk solvent k_{sol} (e/Å ³), B_{sol} (Å ²)	0.37 , 49.1	EDS
L-test for twinning ²	$\langle L \rangle = 0.49$, $\langle L^2 \rangle = 0.32$	Xtrriage
Estimated twinning fraction	0.034 for h,-h-k,-l	Xtrriage
F_o, F_c correlation	0.89	EDS
Total number of atoms	4836	wwPDB-VP
Average B, all atoms (Å ²)	42.0	wwPDB-VP

Xtrriage's analysis on translational NCS is as follows: *The largest off-origin peak in the Patterson function is 3.84% of the height of the origin peak. No significant pseudotranslation is detected.*

¹Intensities estimated from amplitudes.

²Theoretical values of $\langle |L| \rangle$, $\langle L^2 \rangle$ for acentric reflections are 0.5, 0.333 respectively for untwinned datasets, and 0.375, 0.2 for perfectly twinned datasets.

5 Model quality [i](#)

5.1 Standard geometry [i](#)

Bond lengths and bond angles in the following residue types are not validated in this section: GDP, NA, AGS, MG

The Z score for a bond length (or angle) is the number of standard deviations the observed value is removed from the expected value. A bond length (or angle) with $|Z| > 5$ is considered an outlier worth inspection. RMSZ is the root-mean-square of all Z scores of the bond lengths (or angles).

Mol	Chain	Bond lengths		Bond angles	
		RMSZ	# Z >5	RMSZ	# Z >5
1	A	0.28	0/1696	0.47	0/2276
2	B	0.28	0/3063	0.53	0/4123
All	All	0.28	0/4759	0.51	0/6399

Chiral center outliers are detected by calculating the chiral volume of a chiral center and verifying if the center is modelled as a planar moiety or with the opposite hand. A planarity outlier is detected by checking planarity of atoms in a peptide group, atoms in a mainchain group or atoms of a sidechain that are expected to be planar.

Mol	Chain	#Chirality outliers	#Planarity outliers
2	B	0	4

There are no bond length outliers.

There are no bond angle outliers.

There are no chirality outliers.

All (4) planarity outliers are listed below:

Mol	Chain	Res	Type	Group
2	B	278	VAL	Peptide,Mainchain
2	B	279	LEU	Peptide,Mainchain

5.2 Too-close contacts [i](#)

In the following table, the Non-H and H(model) columns list the number of non-hydrogen atoms and hydrogen atoms in the chain respectively. The H(added) column lists the number of hydrogen atoms added and optimized by MolProbity. The Clashes column lists the number of clashes within the asymmetric unit, whereas Symm-Clashes lists symmetry-related clashes.

Mol	Chain	Non-H	H(model)	H(added)	Clashes	Symm-Clashes
1	A	1661	0	1630	29	0
2	B	3027	0	3039	85	0
3	A	1	0	0	0	0
4	A	1	0	0	0	0
5	A	31	0	12	1	0
6	B	28	0	12	1	0
7	A	29	0	0	1	0
7	B	58	0	0	1	0
All	All	4836	0	4693	109	0

The all-atom clashscore is defined as the number of clashes found per 1000 atoms (including hydrogen atoms). The all-atom clashscore for this structure is 12.

All (109) close contacts within the same asymmetric unit are listed below, sorted by their clash magnitude.

Atom-1	Atom-2	Interatomic distance (Å)	Clash overlap (Å)
2:B:278:VAL:HG12	2:B:322:LEU:CD2	1.61	1.29
2:B:125:ALA:HB3	2:B:155:LEU:CD1	1.73	1.18
1:A:168:ASN:HB2	7:A:729:HOH:O	1.41	1.17
1:A:166:LEU:HD12	2:B:417:ILE:CG2	1.76	1.15
2:B:278:VAL:HG12	2:B:322:LEU:HD23	1.28	1.15
2:B:279:LEU:N	2:B:280:PRO:HD2	1.33	1.13
2:B:125:ALA:CB	2:B:155:LEU:HD12	1.80	1.10
1:A:166:LEU:CD1	2:B:417:ILE:HG22	1.82	1.10
1:A:166:LEU:HD12	2:B:417:ILE:HG22	1.04	1.00
2:B:279:LEU:N	2:B:280:PRO:CD	2.25	0.99
2:B:125:ALA:HB3	2:B:155:LEU:HD12	1.01	0.99
2:B:278:VAL:CG1	2:B:322:LEU:CD2	2.41	0.99
2:B:279:LEU:H	2:B:280:PRO:CD	1.76	0.98
2:B:165:ASN:HD21	2:B:205:ALA:H	1.14	0.95
1:A:155:HIS:CE1	1:A:181:ARG:HH22	1.86	0.94
2:B:240:ASN:CB	2:B:267:SER:HB2	2.02	0.90
1:A:155:HIS:HE1	1:A:181:ARG:HH22	1.19	0.89
2:B:122:ALA:HA	2:B:155:LEU:HD11	1.54	0.89
2:B:278:VAL:HG12	2:B:322:LEU:HD22	1.59	0.83
2:B:279:LEU:H	2:B:280:PRO:HD2	0.86	0.82
2:B:255:ASN:HD22	2:B:257:ASN:H	1.32	0.77
2:B:279:LEU:HD21	2:B:323:VAL:HG11	1.73	0.71
2:B:279:LEU:HD11	2:B:323:VAL:HB	1.72	0.70
2:B:357:ARG:NH2	2:B:403:ALA:O	2.25	0.70
2:B:278:VAL:CG1	2:B:322:LEU:HD22	2.19	0.69
1:A:35:ILE:HB	1:A:71:MSE:HE2	1.76	0.68

Continued on next page...

Continued from previous page...

Atom-1	Atom-2	Interatomic distance (Å)	Clash overlap (Å)
2:B:279:LEU:HD11	2:B:323:VAL:CB	2.22	0.68
2:B:240:ASN:CB	2:B:267:SER:CB	2.71	0.66
2:B:347:MSE:HE1	2:B:366:ILE:HB	1.76	0.65
1:A:60:MSE:HE1	1:A:89:HIS:HB2	1.80	0.64
2:B:97:ARG:HB2	2:B:108:ILE:HB	1.82	0.61
2:B:40:LEU:HD22	2:B:203:MSE:HE1	1.82	0.61
2:B:347:MSE:HE3	2:B:366:ILE:HD13	1.83	0.60
2:B:321:LEU:HD12	2:B:403:ALA:HB3	1.83	0.60
1:A:64:THR:HG22	1:A:65:ARG:H	1.65	0.60
2:B:347:MSE:CE	2:B:366:ILE:HB	2.33	0.59
1:A:34:SER:OG	5:A:600:AGS:H2'	2.03	0.59
1:A:135:ARG:HD3	1:A:193:ILE:HD13	1.86	0.58
2:B:279:LEU:HD21	2:B:323:VAL:CG1	2.35	0.56
2:B:119:ARG:H	2:B:389:ASN:ND2	2.03	0.56
2:B:323:VAL:HG22	7:B:615:HOH:O	2.05	0.56
1:A:60:MSE:HG2	1:A:87:ILE:HB	1.86	0.56
1:A:149:SER:HB3	1:A:181:ARG:HB2	1.88	0.56
2:B:357:ARG:HH11	2:B:357:ARG:HB3	1.71	0.55
2:B:341:TRP:CE3	2:B:428:ALA:HB2	2.41	0.55
2:B:28:LEU:HD12	2:B:109:ALA:O	2.06	0.55
2:B:226:LEU:O	2:B:227:MSE:HB3	2.07	0.54
2:B:165:ASN:ND2	2:B:205:ALA:H	1.96	0.54
2:B:339:LEU:O	2:B:391:ILE:HA	2.08	0.53
2:B:280:PRO:HG3	2:B:320:ASP:CG	2.29	0.53
2:B:122:ALA:CA	2:B:155:LEU:HD11	2.34	0.52
1:A:136:ARG:HG3	1:A:186:SER:HB2	1.91	0.52
2:B:243:ASP:OD2	2:B:243:ASP:N	2.42	0.52
1:A:31:MSE:HA	1:A:131:PHE:HB2	1.91	0.52
1:A:166:LEU:O	2:B:126:SER:OG	2.21	0.51
2:B:235:ILE:C	2:B:237:SER:H	2.13	0.51
2:B:166:LYS:HG2	6:B:599:GDP:C6	2.45	0.51
2:B:22:LYS:HB3	2:B:104:ARG:HA	1.93	0.50
1:A:155:HIS:HE1	1:A:181:ARG:NH2	2.00	0.50
2:B:255:ASN:ND2	2:B:257:ASN:H	2.07	0.50
2:B:229:ILE:O	2:B:233:VAL:HG22	2.11	0.49
1:A:31:MSE:HG3	1:A:42:MSE:HE3	1.94	0.48
1:A:136:ARG:HA	1:A:142:ARG:HB3	1.95	0.47
1:A:156:ARG:HG3	1:A:157:TRP:N	2.28	0.47
2:B:111:THR:HG21	2:B:121:MSE:HA	1.97	0.47
2:B:261:PHE:CE2	2:B:316:ILE:HB	2.50	0.47
2:B:122:ALA:O	2:B:155:LEU:HD13	2.16	0.46

Continued on next page...

Continued from previous page...

Atom-1	Atom-2	Interatomic distance (Å)	Clash overlap (Å)
2:B:274:ASP:OD1	2:B:324:HIS:HE1	1.99	0.46
2:B:95:ALA:HB3	2:B:110:ASP:HB3	1.97	0.46
2:B:125:ALA:CB	2:B:155:LEU:CD1	2.62	0.46
2:B:165:ASN:HD22	2:B:203:MSE:HG3	1.80	0.46
1:A:135:ARG:HB2	1:A:138:GLU:HG3	1.98	0.46
2:B:226:LEU:O	2:B:227:MSE:CB	2.64	0.46
2:B:158:LYS:HD3	2:B:237:SER:HB3	1.97	0.45
2:B:27:PHE:CZ	2:B:108:ILE:HG12	2.51	0.45
2:B:191:ILE:HB	2:B:193:PHE:HB2	1.99	0.45
2:B:278:VAL:CG1	2:B:322:LEU:HD21	2.41	0.45
1:A:34:SER:O	1:A:35:ILE:HD13	2.17	0.45
2:B:279:LEU:HD11	2:B:323:VAL:CG2	2.47	0.44
2:B:352:LYS:HB3	2:B:421:ARG:HD2	1.99	0.44
2:B:278:VAL:HG11	2:B:316:ILE:HG12	1.97	0.44
1:A:197:ILE:HA	1:A:202:ILE:HD12	2.00	0.44
1:A:32:LEU:HB2	1:A:131:PHE:O	2.18	0.44
1:A:121:ALA:O	1:A:125:HIS:HD2	2.01	0.44
2:B:119:ARG:HG2	2:B:389:ASN:HD21	1.83	0.43
2:B:286:ARG:HB3	2:B:311:GLU:HG3	2.01	0.43
2:B:43:ARG:NH2	2:B:206:LEU:O	2.52	0.43
2:B:279:LEU:CD2	2:B:328:VAL:HG13	2.49	0.42
2:B:345:GLU:HA	2:B:346:PRO:HD3	1.91	0.42
2:B:280:PRO:HG3	2:B:320:ASP:OD2	2.18	0.42
2:B:283:LYS:HE3	2:B:314:ILE:HG13	2.01	0.42
2:B:104:ARG:HD2	2:B:230:LEU:O	2.20	0.42
1:A:142:ARG:O	1:A:145:GLU:HB2	2.19	0.42
2:B:279:LEU:HD22	2:B:328:VAL:HG13	2.01	0.42
2:B:279:LEU:HB3	2:B:403:ALA:HB2	2.02	0.42
2:B:44:LEU:HD22	2:B:227:MSE:HE2	2.01	0.42
2:B:130:LEU:HA	2:B:159:HIS:O	2.20	0.41
2:B:214:LYS:HE3	2:B:224:GLN:HA	2.01	0.41
2:B:343:ALA:C	2:B:388:LEU:HD13	2.39	0.41
1:A:-3:ARG:NH1	2:B:269:ILE:O	2.52	0.41
1:A:174:VAL:HG22	1:A:178:GLU:HB2	2.02	0.41
2:B:279:LEU:CD1	2:B:323:VAL:HB	2.46	0.41
2:B:237:SER:O	2:B:239:ARG:N	2.48	0.41
2:B:279:LEU:HD11	2:B:323:VAL:HG21	2.03	0.41
2:B:104:ARG:HG3	2:B:106:PHE:CZ	2.56	0.40
1:A:64:THR:HG21	1:A:109:HIS:NE2	2.35	0.40
2:B:122:ALA:O	2:B:155:LEU:CD1	2.69	0.40
2:B:245:ARG:NH1	2:B:405:ASP:OD1	2.55	0.40

Continued on next page...

Continued from previous page...

Atom-1	Atom-2	Interatomic distance (Å)	Clash overlap (Å)
2:B:407:TYR:CG	2:B:431:MSE:HB2	2.56	0.40

There are no symmetry-related clashes.

5.3 Torsion angles [i](#)

5.3.1 Protein backbone [i](#)

In the following table, the Percentiles column shows the percent Ramachandran outliers of the chain as a percentile score with respect to all X-ray entries followed by that with respect to entries of similar resolution.

The Analysed column shows the number of residues for which the backbone conformation was analysed, and the total number of residues.

Mol	Chain	Analysed	Favoured	Allowed	Outliers	Percentiles
1	A	200/325 (62%)	187 (94%)	12 (6%)	1 (0%)	29 54
2	B	386/434 (89%)	364 (94%)	20 (5%)	2 (0%)	29 54
All	All	586/759 (77%)	551 (94%)	32 (6%)	3 (0%)	29 54

All (3) Ramachandran outliers are listed below:

Mol	Chain	Res	Type
1	A	34	SER
2	B	280	PRO
2	B	279	LEU

5.3.2 Protein sidechains [i](#)

In the following table, the Percentiles column shows the percent sidechain outliers of the chain as a percentile score with respect to all X-ray entries followed by that with respect to entries of similar resolution.

The Analysed column shows the number of residues for which the sidechain conformation was analysed, and the total number of residues.

Mol	Chain	Analysed	Rotameric	Outliers	Percentiles
1	A	175/276 (63%)	166 (95%)	9 (5%)	24 50
2	B	327/352 (93%)	311 (95%)	16 (5%)	25 52

Continued on next page...

Continued from previous page...

Mol	Chain	Analysed	Rotameric	Outliers	Percentiles
All	All	502/628 (80%)	477 (95%)	25 (5%)	24 51

All (25) residues with a non-rotameric sidechain are listed below:

Mol	Chain	Res	Type
1	A	30	VAL
1	A	37	LYS
1	A	45	LEU
1	A	60	MSE
1	A	75	ARG
1	A	142	ARG
1	A	144	LYS
1	A	174	VAL
1	A	193	ILE
2	B	78	LEU
2	B	97	ARG
2	B	158	LYS
2	B	161	VAL
2	B	183	ASP
2	B	233	VAL
2	B	235	ILE
2	B	243	ASP
2	B	255	ASN
2	B	310	MSE
2	B	323	VAL
2	B	347	MSE
2	B	357	ARG
2	B	379	GLU
2	B	380	GLU
2	B	431	MSE

Sometimes sidechains can be flipped to improve hydrogen bonding and reduce clashes. All (15) such sidechains are listed below:

Mol	Chain	Res	Type
1	A	17	HIS
1	A	44	HIS
1	A	125	HIS
1	A	155	HIS
1	A	161	ASN
2	B	32	ASN
2	B	120	ASN

Continued on next page...

Continued from previous page...

Mol	Chain	Res	Type
2	B	148	HIS
2	B	165	ASN
2	B	249	GLN
2	B	255	ASN
2	B	299	GLN
2	B	324	HIS
2	B	371	HIS
2	B	389	ASN

5.3.3 RNA [i](#)

There are no RNA molecules in this entry.

5.4 Non-standard residues in protein, DNA, RNA chains [i](#)

There are no non-standard protein/DNA/RNA residues in this entry.

5.5 Carbohydrates [i](#)

There are no monosaccharides in this entry.

5.6 Ligand geometry [i](#)

Of 4 ligands modelled in this entry, 2 are monoatomic - leaving 2 for Mogul analysis.

In the following table, the Counts columns list the number of bonds (or angles) for which Mogul statistics could be retrieved, the number of bonds (or angles) that are observed in the model and the number of bonds (or angles) that are defined in the Chemical Component Dictionary. The Link column lists molecule types, if any, to which the group is linked. The Z score for a bond length (or angle) is the number of standard deviations the observed value is removed from the expected value. A bond length (or angle) with $|Z| > 2$ is considered an outlier worth inspection. RMSZ is the root-mean-square of all Z scores of the bond lengths (or angles).

Mol	Type	Chain	Res	Link	Bond lengths			Bond angles		
					Counts	RMSZ	# Z > 2	Counts	RMSZ	# Z > 2
6	GDP	B	599	-	25,30,30	0.95	1 (4%)	30,47,47	1.07	2 (6%)
5	AGS	A	600	3,4	28,33,33	2.30	4 (14%)	31,52,52	1.45	5 (16%)

In the following table, the Chirals column lists the number of chiral outliers, the number of chiral centers analysed, the number of these observed in the model and the number defined in the

Chemical Component Dictionary. Similar counts are reported in the Torsion and Rings columns. '-' means no outliers of that kind were identified.

Mol	Type	Chain	Res	Link	Chirals	Torsions	Rings
6	GDP	B	599	-	-	2/12/32/32	0/3/3/3
5	AGS	A	600	3,4	-	9/17/38/38	0/3/3/3

All (5) bond length outliers are listed below:

Mol	Chain	Res	Type	Atoms	Z	Observed(Å)	Ideal(Å)
5	A	600	AGS	PG-S1G	7.71	2.07	1.90
5	A	600	AGS	C4-N3	6.75	1.44	1.35
5	A	600	AGS	PA-O1A	2.48	1.59	1.50
5	A	600	AGS	PB-O1B	2.48	1.59	1.50
6	B	599	GDP	C6-N1	-2.11	1.34	1.37

All (7) bond angle outliers are listed below:

Mol	Chain	Res	Type	Atoms	Z	Observed(°)	Ideal(°)
5	A	600	AGS	N3-C2-N1	-4.02	123.21	128.67
5	A	600	AGS	C4-C5-N7	-3.71	105.42	109.34
6	B	599	GDP	C8-N7-C5	2.79	107.30	102.55
6	B	599	GDP	O4'-C1'-N9	2.54	112.11	108.75
5	A	600	AGS	PB-O3B-PG	-2.51	123.97	133.17
5	A	600	AGS	C4'-O4'-C1'	2.30	112.03	109.92
5	A	600	AGS	O3G-PG-O3B	2.11	111.70	104.64

There are no chirality outliers.

All (11) torsion outliers are listed below:

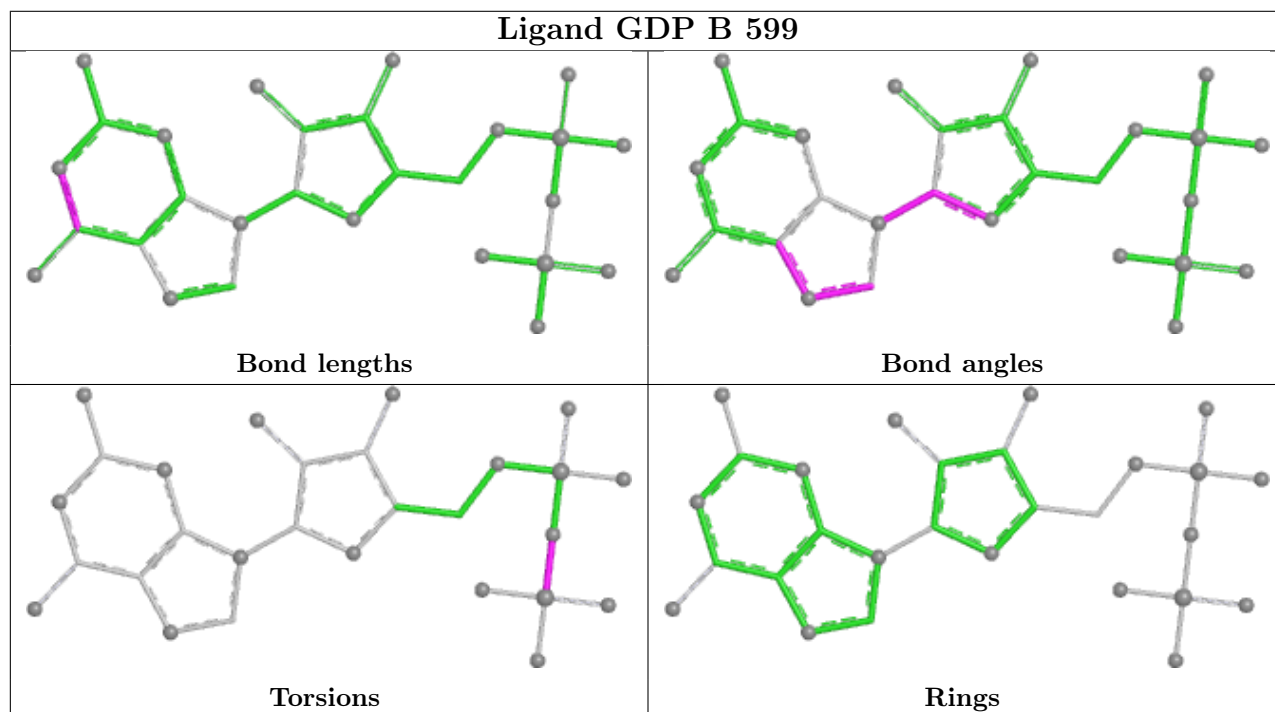
Mol	Chain	Res	Type	Atoms
5	A	600	AGS	PB-O3B-PG-O2G
5	A	600	AGS	PB-O3B-PG-O3G
5	A	600	AGS	C5'-O5'-PA-O1A
6	B	599	GDP	PA-O3A-PB-O2B
5	A	600	AGS	O4'-C4'-C5'-O5'
5	A	600	AGS	C3'-C4'-C5'-O5'
5	A	600	AGS	C5'-O5'-PA-O2A
5	A	600	AGS	C5'-O5'-PA-O3A
5	A	600	AGS	PA-O3A-PB-O1B
6	B	599	GDP	PA-O3A-PB-O1B
5	A	600	AGS	PA-O3A-PB-O2B

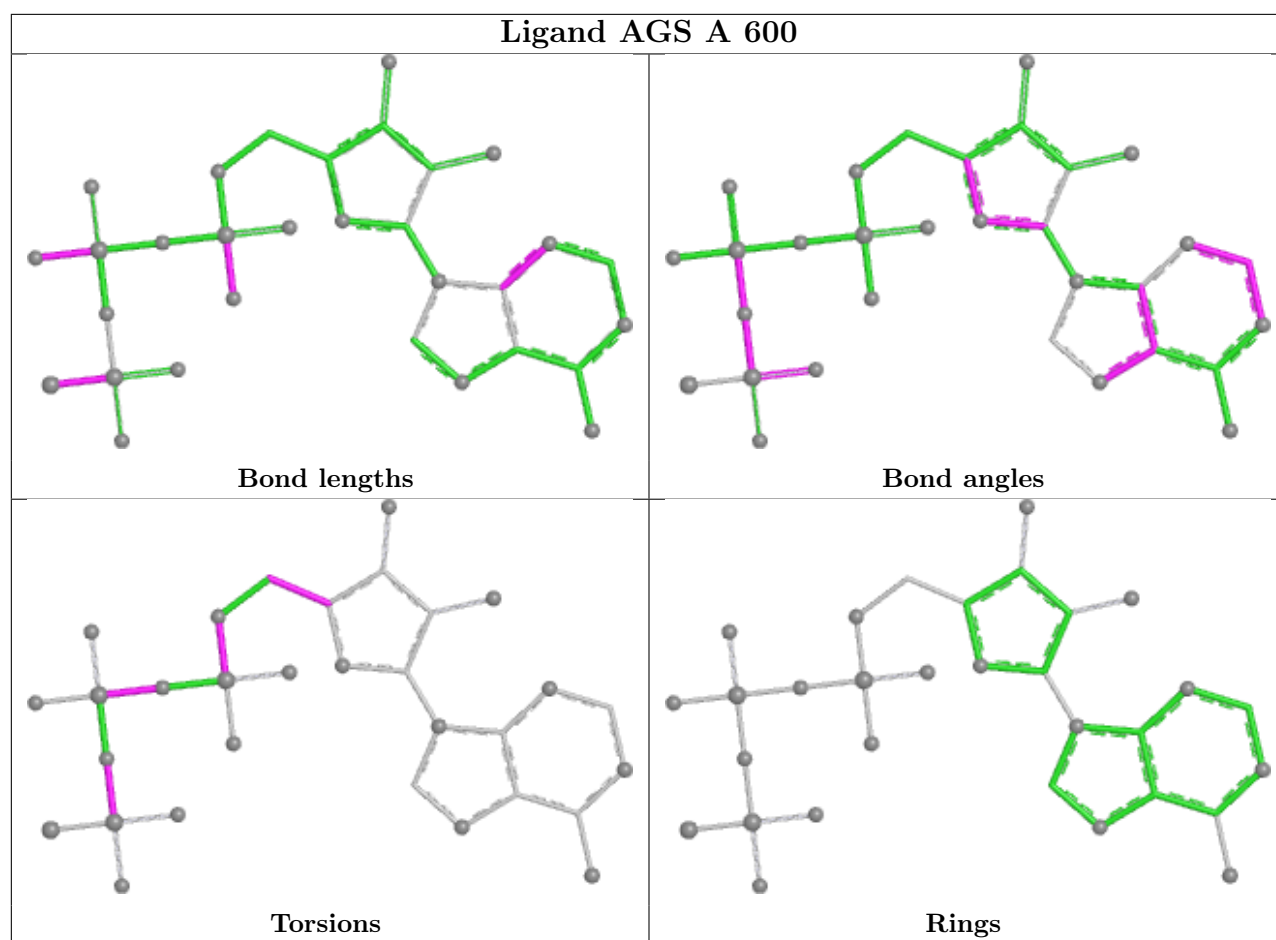
There are no ring outliers.

2 monomers are involved in 2 short contacts:

Mol	Chain	Res	Type	Clashes	Symm-Clashes
6	B	599	GDP	1	0
5	A	600	AGS	1	0

The following is a two-dimensional graphical depiction of Mogul quality analysis of bond lengths, bond angles, torsion angles, and ring geometry for all instances of the Ligand of Interest. In addition, ligands with molecular weight > 250 and outliers as shown on the validation Tables will also be included. For torsion angles, if less than 5% of the Mogul distribution of torsion angles is within 10 degrees of the torsion angle in question, then that torsion angle is considered an outlier. Any bond that is central to one or more torsion angles identified as an outlier by Mogul will be highlighted in the graph. For rings, the root-mean-square deviation (RMSD) between the ring in question and similar rings identified by Mogul is calculated over all ring torsion angles. If the average RMSD is greater than 60 degrees and the minimal RMSD between the ring in question and any Mogul-identified rings is also greater than 60 degrees, then that ring is considered an outlier. The outliers are highlighted in purple. The color gray indicates Mogul did not find sufficient equivalents in the CSD to analyse the geometry.





5.7 Other polymers [i](#)

There are no such residues in this entry.

5.8 Polymer linkage issues [i](#)

There are no chain breaks in this entry.

6 Fit of model and data

6.1 Protein, DNA and RNA chains

In the following table, the column labelled ‘#RSRZ > 2’ contains the number (and percentage) of RSRZ outliers, followed by percent RSRZ outliers for the chain as percentile scores relative to all X-ray entries and entries of similar resolution. The OWAB column contains the minimum, median, 95th percentile and maximum values of the occupancy-weighted average B-factor per residue. The column labelled ‘Q < 0.9’ lists the number of (and percentage) of residues with an average occupancy less than 0.9.

Mol	Chain	Analysed	<RSRZ>	#RSRZ>2	OWAB(Å ²)	Q<0.9
1	A	196/325 (60%)	0.90	33 (16%) 1 1	41, 49, 68, 71	0
2	B	382/434 (88%)	0.24	22 (5%) 23 22	25, 36, 48, 84	0
All	All	578/759 (76%)	0.46	55 (9%) 8 6	25, 40, 62, 84	0

All (55) RSRZ outliers are listed below:

Mol	Chain	Res	Type	RSRZ
1	A	64	THR	6.0
1	A	106	SER	5.9
2	B	90	ILE	5.5
2	B	16	LEU	5.4
1	A	110	THR	4.8
1	A	204	ILE	4.6
1	A	73	ARG	4.6
2	B	239	ARG	4.6
2	B	279	LEU	4.3
2	B	17	GLY	4.0
2	B	222	ALA	3.8
2	B	422	LEU	3.7
2	B	192	ALA	3.7
1	A	209	PHE	3.7
2	B	21	ARG	3.6
1	A	109	HIS	3.5
1	A	81	GLU	3.4
1	A	65	ARG	3.4
1	A	108	LYS	3.4
1	A	153	SER	3.4
1	A	206	PRO	3.3
1	A	69	GLN	3.2
2	B	49	LYS	3.0
2	B	18	GLN	3.0

Continued on next page...

Continued from previous page...

Mol	Chain	Res	Type	RSRZ
1	A	107	ALA	2.9
1	A	70	GLU	2.8
1	A	76	ASP	2.8
2	B	186	LYS	2.8
1	A	80	GLU	2.7
2	B	194	LYS	2.7
1	A	90	ILE	2.6
1	A	208	TYR	2.6
2	B	51	ILE	2.5
2	B	280	PRO	2.5
1	A	66	TRP	2.5
1	A	155	HIS	2.5
1	A	68	PHE	2.4
1	A	91	ASN	2.3
1	A	176	LYS	2.3
1	A	120	GLN	2.3
2	B	434	ALA	2.2
2	B	216	GLU	2.2
2	B	114	HIS	2.2
1	A	152	ASP	2.2
1	A	77	GLN	2.2
1	A	154	LYS	2.1
2	B	34	ASP	2.1
1	A	160	LYS	2.1
1	A	156	ARG	2.1
2	B	313	GLU	2.1
2	B	77	LEU	2.1
1	A	168	ASN	2.0
1	A	74	PHE	2.0
2	B	327	ASN	2.0
1	A	63	ASP	2.0

6.2 Non-standard residues in protein, DNA, RNA chains [i](#)

There are no non-standard protein/DNA/RNA residues in this entry.

6.3 Carbohydrates [i](#)

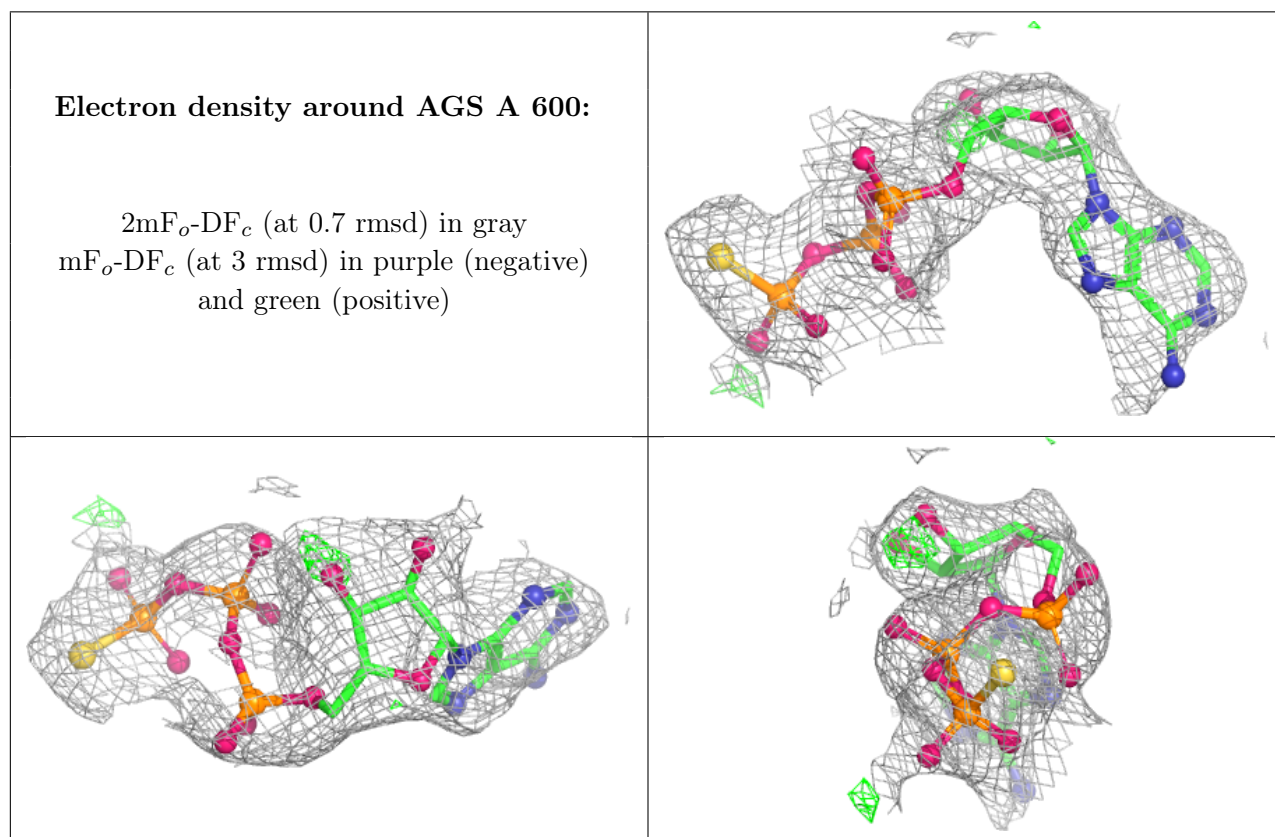
There are no monosaccharides in this entry.

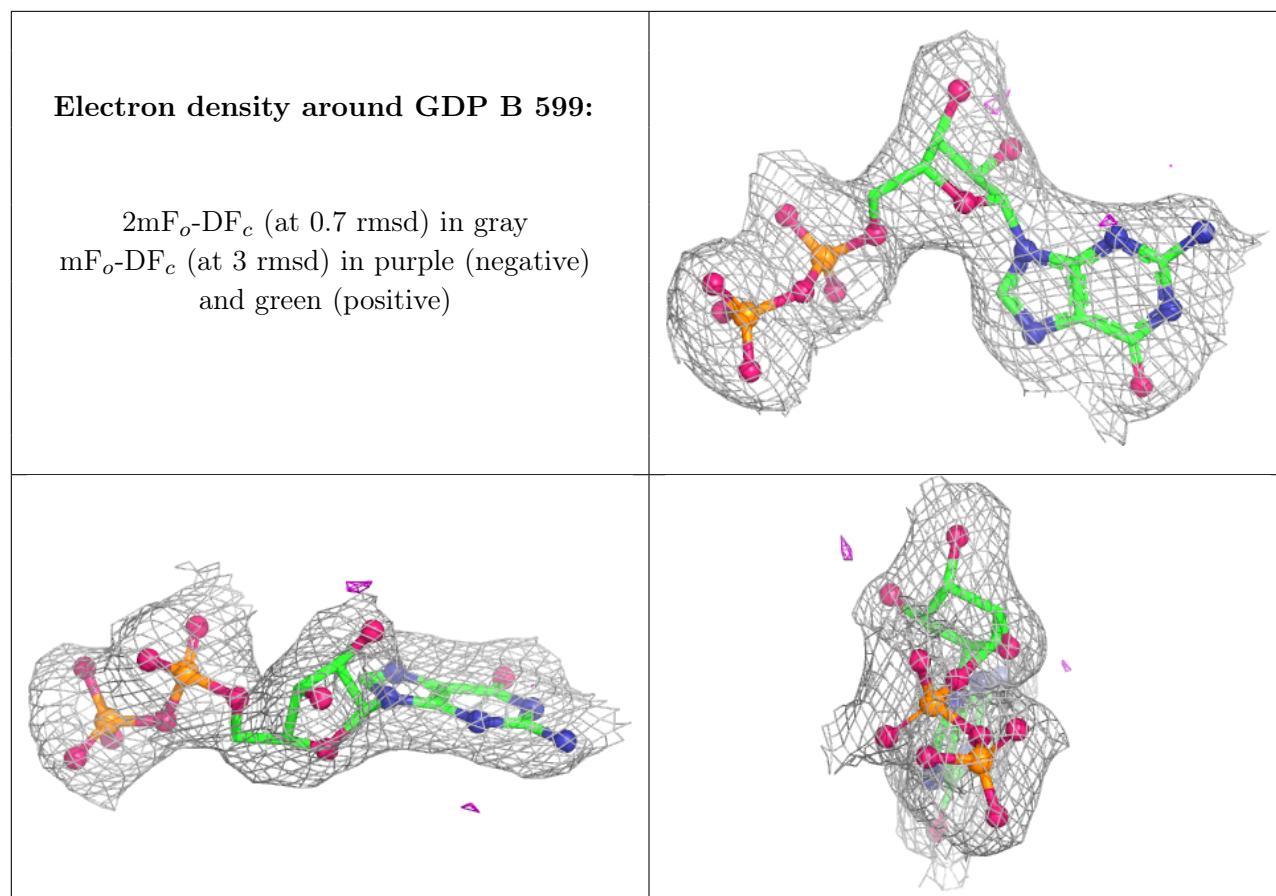
6.4 Ligands [i](#)

In the following table, the Atoms column lists the number of modelled atoms in the group and the number defined in the chemical component dictionary. The B-factors column lists the minimum, median, 95th percentile and maximum values of B factors of atoms in the group. The column labelled 'Q < 0.9' lists the number of atoms with occupancy less than 0.9.

Mol	Type	Chain	Res	Atoms	RSCC	RSR	B-factors(Å ²)	Q<0.9
4	NA	A	700	1/1	0.87	0.15	66,66,66,66	0
3	MG	A	598	1/1	0.90	0.10	37,37,37,37	0
5	AGS	A	600	31/31	0.93	0.15	57,61,64,64	0
6	GDP	B	599	28/28	0.96	0.12	26,27,32,33	0

The following is a graphical depiction of the model fit to experimental electron density of all instances of the Ligand of Interest. In addition, ligands with molecular weight > 250 and outliers as shown on the geometry validation Tables will also be included. Each fit is shown from different orientation to approximate a three-dimensional view.





6.5 Other polymers [i](#)

There are no such residues in this entry.