



# Full wwPDB X-ray Structure Validation Report ⓘ

Aug 14, 2023 – 06:44 PM EDT

PDB ID : 1R35  
Title : MURINE INDUCIBLE NITRIC OXIDE SYNTHASE OXYGENASE DIMER,  
TETRAHYDROBIOPTERIN AND 4R-FLUORO-N6-ETHANIMIDOYL-L-  
LYSINE  
Authors : Shieh, H.S.; Stevens, A.M.; Stallings, W.C.  
Deposited on : 2003-09-30  
Resolution : 2.30 Å(reported)

This is a Full wwPDB X-ray Structure Validation Report for a publicly released PDB entry.

We welcome your comments at [validation@mail.wwpdb.org](mailto:validation@mail.wwpdb.org)

A user guide is available at

<https://www.wwpdb.org/validation/2017/XrayValidationReportHelp>

with specific help available everywhere you see the ⓘ symbol.

The types of validation reports are described at

<http://www.wwpdb.org/validation/2017/FAQs#types>.

---

The following versions of software and data (see [references ⓘ](#)) were used in the production of this report:

MolProbity : 4.02b-467  
Mogul : 1.8.5 (274361), CSD as541be (2020)  
Xtrriage (Phenix) : **NOT EXECUTED**  
EDS : **NOT EXECUTED**  
buster-report : 1.1.7 (2018)  
Percentile statistics : 20191225.v01 (using entries in the PDB archive December 25th 2019)  
Ideal geometry (proteins) : Engh & Huber (2001)  
Ideal geometry (DNA, RNA) : Parkinson et al. (1996)  
Validation Pipeline (wwPDB-VP) : 2.35

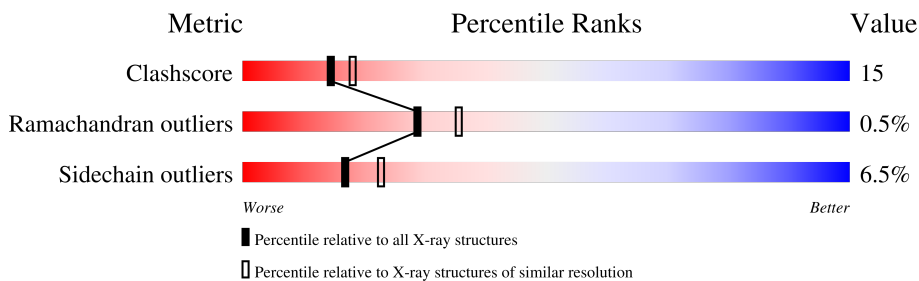
# 1 Overall quality at a glance

The following experimental techniques were used to determine the structure:

*X-RAY DIFFRACTION*

The reported resolution of this entry is 2.30 Å.

Percentile scores (ranging between 0-100) for global validation metrics of the entry are shown in the following graphic. The table shows the number of entries on which the scores are based.



Metric	Whole archive (#Entries)	Similar resolution (#Entries, resolution range(Å))
Clashscore	141614	5643 (2.30-2.30)
Ramachandran outliers	138981	5575 (2.30-2.30)
Sidechain outliers	138945	5575 (2.30-2.30)

The table below summarises the geometric issues observed across the polymeric chains and their fit to the electron density. The red, orange, yellow and green segments of the lower bar indicate the fraction of residues that contain outliers for  $\geq 3$ , 2, 1 and 0 types of geometric quality criteria respectively. A grey segment represents the fraction of residues that are not modelled. The numeric value for each fraction is indicated below the corresponding segment, with a dot representing fractions  $\leq 5\%$ .

Note EDS was not executed.

Mol	Chain	Length	Quality of chain
1	A	433	
1	B	433	

## 2 Entry composition [i](#)

There are 6 unique types of molecules in this entry. The entry contains 7283 atoms, of which 0 are hydrogens and 0 are deuteriums.

In the tables below, the ZeroOcc column contains the number of atoms modelled with zero occupancy, the AltConf column contains the number of residues with at least one atom in alternate conformation and the Trace column contains the number of residues modelled with at most 2 atoms.

- Molecule 1 is a protein called Nitric oxide synthase, inducible.

Mol	Chain	Residues	Atoms					ZeroOcc	AltConf	Trace
			Total	C	N	O	S			
1	A	413	Total 3368	C 2159	N 581	O 608	S 20	0	0	0
1	B	413	Total 3368	C 2159	N 581	O 608	S 20	0	0	0

- Molecule 2 is SULFATE ION (three-letter code: SO4) (formula: O<sub>4</sub>S).



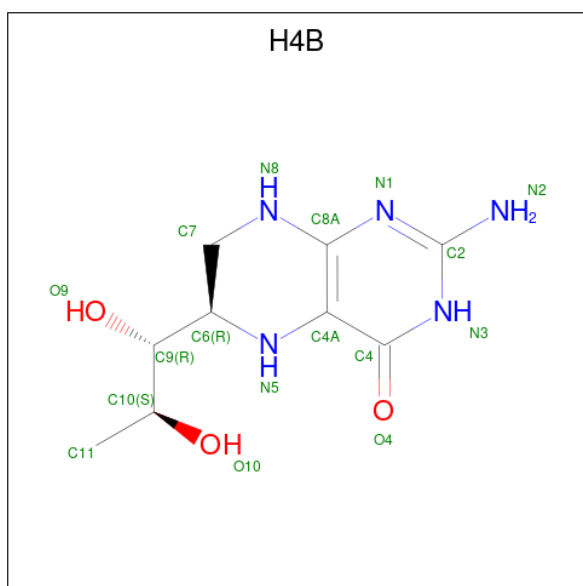
Mol	Chain	Residues	Atoms			ZeroOcc	AltConf
			Total	O	S		
2	A	1	Total 5	O 4	S 1	0	0

- Molecule 3 is PROTOPORPHYRIN IX CONTAINING FE (three-letter code: HEM) (formula: C<sub>34</sub>H<sub>32</sub>FeN<sub>4</sub>O<sub>4</sub>).



Mol	Chain	Residues	Atoms				ZeroOcc	AltConf	
			Total	C	Fe	N			O
3	A	1	43	34	1	4	4	0	0
3	B	1	43	34	1	4	4	0	0

- Molecule 4 is 5,6,7,8-TETRAHYDROBIOPTERIN (three-letter code: H4B) (formula:  $C_9H_{15}N_5O_3$ ).



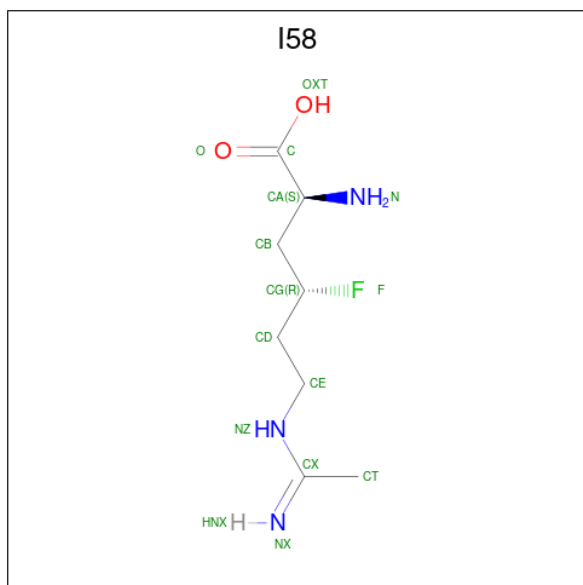
Mol	Chain	Residues	Atoms			ZeroOcc	AltConf	
			Total	C	N			O
4	A	1	17	9	5	3	0	0

*Continued on next page...*

Continued from previous page...

Mol	Chain	Residues	Atoms				ZeroOcc	AltConf
			Total	C	N	O		
4	B	1	17	9	5	3	0	0

- Molecule 5 is 4R-FLUORO-N6-ETHANIMIDOYL-L-LYSINE (three-letter code: I58) (formula: C<sub>8</sub>H<sub>16</sub>FN<sub>3</sub>O<sub>2</sub>).



Mol	Chain	Residues	Atoms					ZeroOcc	AltConf
			Total	C	F	N	O		
5	A	1	14	8	1	3	2	0	0
5	B	1	14	8	1	3	2	0	0

- Molecule 6 is water.

Mol	Chain	Residues	Atoms		ZeroOcc	AltConf
			Total	O		
6	A	219	219	219	0	0
6	B	175	175	175	0	0

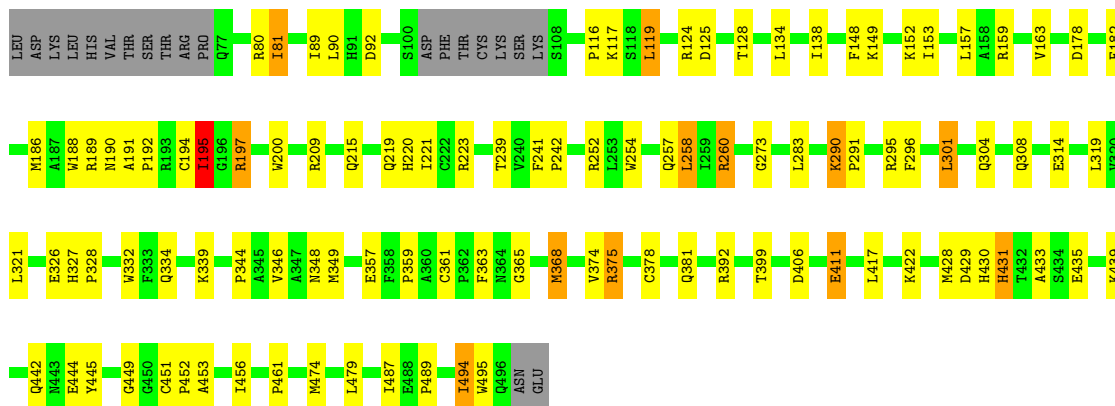
### 3 Residue-property plots

These plots are drawn for all protein, RNA, DNA and oligosaccharide chains in the entry. The first graphic for a chain summarises the proportions of the various outlier classes displayed in the second graphic. The second graphic shows the sequence view annotated by issues in geometry. Residues are color-coded according to the number of geometric quality criteria for which they contain at least one outlier: green = 0, yellow = 1, orange = 2 and red = 3 or more. Stretches of 2 or more consecutive residues without any outlier are shown as a green connector. Residues present in the sample, but not in the model, are shown in grey.

Note EDS was not executed.

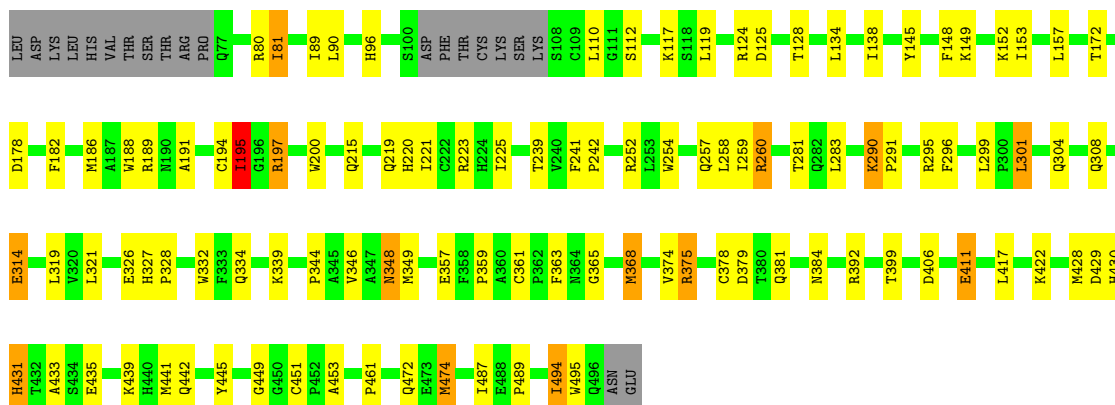
- Molecule 1: Nitric oxide synthase, inducible

Chain A: 



- Molecule 1: Nitric oxide synthase, inducible

Chain B: 



## 4 Data and refinement statistics

Xtrriage (Phenix) and EDS were not executed - this section is therefore incomplete.

Property	Value	Source
Space group	P 61 2 2	Depositor
Cell constants a, b, c, $\alpha$ , $\beta$ , $\gamma$	214.28Å 214.28Å 117.13Å 90.00° 90.00° 120.00°	Depositor
Resolution (Å)	8.00 – 2.30	Depositor
% Data completeness (in resolution range)	73.3 (8.00-2.30)	Depositor
$R_{merge}$	0.07	Depositor
$R_{sym}$	(Not available)	Depositor
Refinement program	X-PLOR 98.1	Depositor
R, $R_{free}$	0.252 , 0.285	Depositor
Estimated twinning fraction	No twinning to report.	Xtrriage
Total number of atoms	7283	wwPDB-VP
Average B, all atoms (Å <sup>2</sup> )	54.0	wwPDB-VP

## 5 Model quality [i](#)

### 5.1 Standard geometry [i](#)

Bond lengths and bond angles in the following residue types are not validated in this section: I58, SO4, H4B, HEM

The Z score for a bond length (or angle) is the number of standard deviations the observed value is removed from the expected value. A bond length (or angle) with  $|Z| > 5$  is considered an outlier worth inspection. RMSZ is the root-mean-square of all Z scores of the bond lengths (or angles).

Mol	Chain	Bond lengths		Bond angles	
		RMSZ	# Z  >5	RMSZ	# Z  >5
1	A	0.39	0/3466	0.65	3/4712 (0.1%)
1	B	0.39	0/3466	0.64	3/4712 (0.1%)
All	All	0.39	0/6932	0.64	6/9424 (0.1%)

There are no bond length outliers.

All (6) bond angle outliers are listed below:

Mol	Chain	Res	Type	Atoms	Z	Observed(°)	Ideal(°)
1	A	365	GLY	N-CA-C	-5.56	99.19	113.10
1	B	195	ILE	CB-CA-C	-5.47	100.65	111.60
1	B	365	GLY	N-CA-C	-5.47	99.42	113.10
1	A	195	ILE	CB-CA-C	-5.30	101.01	111.60
1	A	368	MET	N-CA-C	-5.24	96.85	111.00
1	B	368	MET	N-CA-C	-5.12	97.17	111.00

There are no chirality outliers.

There are no planarity outliers.

### 5.2 Too-close contacts [i](#)

In the following table, the Non-H and H(model) columns list the number of non-hydrogen atoms and hydrogen atoms in the chain respectively. The H(added) column lists the number of hydrogen atoms added and optimized by MolProbity. The Clashes column lists the number of clashes within the asymmetric unit, whereas Symm-Clashes lists symmetry-related clashes.

Mol	Chain	Non-H	H(model)	H(added)	Clashes	Symm-Clashes
1	A	3368	0	3265	90	0
1	B	3368	0	3265	101	0
2	A	5	0	0	0	0

*Continued on next page...*



*Continued from previous page...*

Mol	Chain	Non-H	H(model)	H(added)	Clashes	Symm-Clashes
3	A	43	0	30	10	0
3	B	43	0	30	10	0
4	A	17	0	15	2	0
4	B	17	0	15	3	0
5	A	14	0	15	3	0
5	B	14	0	15	2	0
6	A	219	0	0	18	0
6	B	175	0	0	22	0
All	All	7283	0	6650	208	0

The all-atom clashscore is defined as the number of clashes found per 1000 atoms (including hydrogen atoms). The all-atom clashscore for this structure is 15.

All (208) close contacts within the same asymmetric unit are listed below, sorted by their clash magnitude.

Atom-1	Atom-2	Interatomic distance (Å)	Clash overlap (Å)
1:A:346:VAL:HG11	1:A:349:MET:HE2	1.52	0.91
1:B:472:GLN:HG3	6:B:2023:HOH:O	1.73	0.88
1:B:299:LEU:HB2	6:B:1976:HOH:O	1.75	0.86
1:B:339:LYS:HG3	6:B:1982:HOH:O	1.80	0.80
1:A:296:PHE:HA	6:A:969:HOH:O	1.82	0.80
1:A:479:LEU:HG	6:A:1076:HOH:O	1.81	0.80
1:B:195:ILE:HD13	6:B:1914:HOH:O	1.82	0.80
1:A:290:LYS:HD2	1:A:290:LYS:H	1.45	0.79
1:B:290:LYS:H	1:B:290:LYS:HD2	1.46	0.79
1:A:339:LYS:HG3	6:A:1070:HOH:O	1.82	0.79
1:A:92:ASP:HA	6:A:1073:HOH:O	1.85	0.77
3:A:901:HEM:HMC2	3:A:901:HEM:HBC2	1.68	0.76
1:B:281:THR:HG23	6:B:1953:HOH:O	1.87	0.74
3:B:901:HEM:HMC2	3:B:901:HEM:HBC2	1.69	0.74
1:A:452:PRO:HD3	6:A:1033:HOH:O	1.91	0.70
1:A:197:ARG:NH2	1:A:451:CYS:SG	2.64	0.70
1:A:444:GLU:HB2	6:A:1103:HOH:O	1.92	0.69
1:A:452:PRO:HB3	6:A:1076:HOH:O	1.93	0.68
1:B:220:HIS:HD2	1:B:223:ARG:NH2	1.92	0.67
5:A:800:I58:HB2	6:A:904:HOH:O	1.93	0.67
1:A:195:ILE:HD11	3:A:901:HEM:HMA2	1.75	0.67
1:B:346:VAL:HG11	1:B:349:MET:HE2	1.77	0.66
1:A:220:HIS:HD2	1:A:223:ARG:NH2	1.92	0.66
1:A:260:ARG:HD2	6:A:1007:HOH:O	1.95	0.66
1:B:344:PRO:HA	6:B:1903:HOH:O	1.95	0.66

*Continued on next page...*

*Continued from previous page...*

Atom-1	Atom-2	Interatomic distance (Å)	Clash overlap (Å)
1:B:195:ILE:HD12	1:B:368:MET:CE	2.26	0.66
1:A:451:CYS:HB2	6:A:1103:HOH:O	1.94	0.66
1:B:197:ARG:NH2	1:B:451:CYS:SG	2.69	0.66
1:A:349:MET:HE1	3:A:901:HEM:HAD1	1.78	0.65
1:B:188:TRP:CE3	1:B:200:TRP:HA	2.32	0.65
1:B:349:MET:HE3	1:B:363:PHE:HZ	1.61	0.65
1:B:195:ILE:HD11	3:B:901:HEM:HMA2	1.77	0.65
1:A:188:TRP:CE3	1:A:200:TRP:HA	2.31	0.65
3:A:901:HEM:HBB2	3:A:901:HEM:HHC	1.80	0.64
1:B:332:TRP:CE3	1:B:392:ARG:HD3	2.34	0.63
1:B:220:HIS:HD2	1:B:223:ARG:HH22	1.47	0.63
1:B:474:MET:HB3	6:B:2023:HOH:O	1.99	0.63
1:A:461:PRO:HG3	6:A:911:HOH:O	2.00	0.62
1:A:221:ILE:HG21	1:A:301:LEU:HD21	1.81	0.62
3:B:901:HEM:HBB2	3:B:901:HEM:HHC	1.80	0.62
1:A:332:TRP:CE3	1:A:392:ARG:HD3	2.35	0.62
1:A:375:ARG:HD2	6:A:911:HOH:O	1.99	0.62
1:A:273:GLY:HA3	6:A:1111:HOH:O	1.99	0.61
1:B:349:MET:HE3	1:B:363:PHE:CZ	2.35	0.61
1:B:441:MET:HE1	6:B:2023:HOH:O	2.00	0.61
1:B:186:MET:HE1	1:B:189:ARG:HH11	1.66	0.61
1:A:344:PRO:HA	6:A:904:HOH:O	2.01	0.60
1:B:327:HIS:NE2	1:B:411:GLU:HG3	2.16	0.60
1:B:221:ILE:HG21	1:B:301:LEU:HD21	1.83	0.60
1:A:220:HIS:HD2	1:A:223:ARG:HH22	1.49	0.60
1:A:194:CYS:O	1:A:197:ARG:HD3	2.02	0.60
1:A:153:ILE:H	1:A:153:ILE:HD12	1.67	0.58
1:B:148:PHE:CE2	1:B:152:LYS:HE2	2.38	0.58
1:B:153:ILE:H	1:B:153:ILE:HD12	1.69	0.57
1:B:494:ILE:HD13	1:B:494:ILE:N	2.20	0.57
1:B:194:CYS:O	1:B:197:ARG:HD3	2.03	0.57
1:B:349:MET:HE1	3:B:901:HEM:HMD3	1.86	0.57
1:A:252:ARG:HH21	1:A:489:PRO:HD3	1.71	0.56
1:A:195:ILE:HD11	3:A:901:HEM:CMA	2.36	0.56
1:A:327:HIS:NE2	1:A:411:GLU:HG3	2.21	0.55
1:A:290:LYS:HD2	1:A:290:LYS:N	2.20	0.55
1:B:349:MET:HE1	3:B:901:HEM:HAD1	1.89	0.54
1:A:429:ASP:OD2	1:A:431:HIS:HB2	2.07	0.54
1:A:148:PHE:CE2	1:A:152:LYS:HE2	2.42	0.54
1:A:494:ILE:HD13	1:A:494:ILE:N	2.23	0.54
1:B:259:ILE:HG13	6:B:1997:HOH:O	2.07	0.54

*Continued on next page...*

*Continued from previous page...*

Atom-1	Atom-2	Interatomic distance (Å)	Clash overlap (Å)
1:B:429:ASP:OD2	1:B:431:HIS:HB2	2.07	0.54
1:B:375:ARG:HD2	6:B:1910:HOH:O	2.07	0.53
1:B:252:ARG:HH21	1:B:489:PRO:HD3	1.72	0.53
1:B:431:HIS:O	1:B:435:GLU:HG3	2.08	0.53
1:B:461:PRO:HG3	6:B:1910:HOH:O	2.07	0.53
1:A:368:MET:CE	1:A:433:ALA:HB3	2.39	0.53
1:B:117:LYS:HA	1:B:117:LYS:HE2	1.91	0.53
1:B:195:ILE:HD11	3:B:901:HEM:CMA	2.38	0.53
1:A:182:PHE:CE1	1:A:186:MET:HE2	2.43	0.53
1:A:195:ILE:HD12	1:A:368:MET:CE	2.39	0.53
1:A:117:LYS:HA	1:A:117:LYS:HE2	1.91	0.52
1:A:81:ILE:HG22	1:A:90:LEU:HB2	1.91	0.52
1:A:430:HIS:O	1:A:430:HIS:CG	2.61	0.52
1:B:430:HIS:CG	1:B:430:HIS:O	2.61	0.52
1:B:195:ILE:HD12	1:B:368:MET:SD	2.49	0.52
1:B:124:ARG:NH1	1:B:128:THR:OG1	2.43	0.52
3:B:901:HEM:HBC2	3:B:901:HEM:CMC	2.40	0.52
1:B:474:MET:HE2	6:B:2023:HOH:O	2.08	0.52
1:B:81:ILE:HG22	1:B:90:LEU:HB2	1.92	0.51
1:B:145:TYR:HA	6:B:1962:HOH:O	2.09	0.51
1:B:153:ILE:O	1:B:157:LEU:HG	2.11	0.51
1:B:346:VAL:HG11	1:B:349:MET:CE	2.40	0.51
1:A:241:PHE:HB3	1:A:242:PRO:CD	2.39	0.51
1:A:349:MET:CE	1:A:363:PHE:HZ	2.23	0.51
1:B:241:PHE:HB3	1:B:242:PRO:CD	2.40	0.51
1:A:374:VAL:O	1:A:378:CYS:HB2	2.11	0.50
1:A:453:ALA:HB3	1:A:474:MET:HB2	1.92	0.50
1:B:348:ASN:HD22	1:B:348:ASN:H	1.60	0.50
4:B:1902:H4B:H71	4:B:1902:H4B:H113	1.93	0.50
3:A:901:HEM:HBC2	3:A:901:HEM:CMC	2.40	0.50
1:B:295:ARG:HG3	1:B:296:PHE:CD2	2.47	0.50
1:A:431:HIS:O	1:A:435:GLU:HG3	2.12	0.50
1:B:112:SER:HB2	4:B:1902:H4B:H111	1.94	0.50
1:A:215:GLN:O	1:A:219:GLN:HG3	2.11	0.50
1:B:374:VAL:O	1:B:378:CYS:HB2	2.12	0.50
1:B:257:GLN:NE2	6:B:1903:HOH:O	2.44	0.50
1:B:327:HIS:HE2	1:B:411:GLU:HG3	1.76	0.50
1:B:494:ILE:HD13	1:B:494:ILE:H	1.77	0.50
1:A:124:ARG:NH1	1:A:128:THR:OG1	2.45	0.49
1:B:260:ARG:HB3	6:B:1976:HOH:O	2.12	0.49
1:A:153:ILE:O	1:A:157:LEU:HG	2.12	0.49

*Continued on next page...*

*Continued from previous page...*

Atom-1	Atom-2	Interatomic distance (Å)	Clash overlap (Å)
4:B:1902:H4B:H71	4:B:1902:H4B:C11	2.43	0.49
1:A:295:ARG:HG3	1:A:296:PHE:CD2	2.48	0.49
1:B:252:ARG:NH2	1:B:489:PRO:HD3	2.28	0.49
4:A:902:H4B:H71	4:A:902:H4B:H113	1.95	0.49
1:B:220:HIS:CD2	1:B:223:ARG:NH2	2.78	0.49
1:B:374:VAL:HG11	1:B:461:PRO:HB2	1.95	0.48
1:A:254:TRP:HE3	1:A:283:LEU:HD21	1.78	0.48
1:B:349:MET:CE	1:B:363:PHE:HZ	2.27	0.48
1:B:368:MET:CE	1:B:433:ALA:HB3	2.43	0.48
1:B:195:ILE:CD1	1:B:368:MET:SD	3.02	0.48
1:A:252:ARG:NH2	1:A:489:PRO:HD3	2.29	0.48
1:B:290:LYS:HD2	1:B:290:LYS:N	2.20	0.48
1:A:81:ILE:HD13	6:A:1008:HOH:O	2.13	0.47
1:B:314:GLU:HG3	6:B:1985:HOH:O	2.14	0.47
1:B:96:HIS:HE1	6:B:2065:HOH:O	1.97	0.47
1:A:357:GLU:O	1:A:359:PRO:HD3	2.14	0.47
1:A:195:ILE:HD12	1:A:368:MET:SD	2.55	0.47
1:A:349:MET:HE3	3:A:901:HEM:HMD1	1.95	0.47
1:B:254:TRP:HE3	1:B:283:LEU:HD21	1.79	0.47
1:B:215:GLN:O	1:B:219:GLN:HG3	2.15	0.47
1:B:357:GLU:O	1:B:359:PRO:HD3	2.15	0.47
1:A:195:ILE:H	1:A:195:ILE:HG12	1.51	0.47
1:B:172:THR:HG21	6:B:1952:HOH:O	2.15	0.47
1:A:487:ILE:HD12	1:A:487:ILE:N	2.30	0.46
4:A:902:H4B:H71	4:A:902:H4B:C11	2.45	0.46
1:B:304:GLN:HG3	1:B:308:GLN:O	2.16	0.46
3:B:901:HEM:HHA	3:B:901:HEM:HBD2	1.97	0.46
3:A:901:HEM:HHA	3:A:901:HEM:HBD2	1.98	0.46
1:A:81:ILE:HB	6:A:1008:HOH:O	2.15	0.46
5:B:1800:I58:HZ	5:B:1800:I58:HB3	1.80	0.46
3:B:901:HEM:HBA1	5:B:1800:I58:HD2	1.98	0.46
1:A:327:HIS:HE2	1:A:411:GLU:HG3	1.81	0.46
1:A:80:ARG:NE	1:A:89:ILE:HG21	2.31	0.45
1:B:349:MET:HE1	3:B:901:HEM:CMD	2.47	0.45
1:A:304:GLN:HG3	1:A:308:GLN:O	2.17	0.45
1:B:375:ARG:HH11	1:B:375:ARG:HG2	1.81	0.45
1:A:349:MET:CE	3:A:901:HEM:HMD1	2.47	0.45
1:B:375:ARG:HG2	1:B:375:ARG:NH1	2.32	0.45
1:B:327:HIS:CG	1:B:328:PRO:HD2	2.52	0.45
1:A:494:ILE:HD13	1:A:494:ILE:H	1.81	0.45
1:B:326:GLU:CD	1:B:422:LYS:HZ2	2.19	0.45

*Continued on next page...*

*Continued from previous page...*

Atom-1	Atom-2	Interatomic distance (Å)	Clash overlap (Å)
1:A:159:ARG:O	1:A:163:VAL:HG23	2.16	0.45
1:B:487:ILE:HD12	1:B:487:ILE:N	2.31	0.45
1:A:456:ILE:HA	6:A:978:HOH:O	2.17	0.45
5:A:800:I58:HZ	5:A:800:I58:HB3	1.81	0.45
1:A:422:LYS:HE2	1:A:422:LYS:HB3	1.64	0.45
1:B:384:ASN:HA	6:B:1929:HOH:O	2.16	0.44
1:B:80:ARG:NE	1:B:89:ILE:HG21	2.33	0.44
1:A:375:ARG:HG2	1:A:375:ARG:HH11	1.82	0.44
1:A:220:HIS:CD2	1:A:223:ARG:NH2	2.79	0.44
1:A:186:MET:HE1	1:A:189:ARG:HH11	1.82	0.43
1:B:348:ASN:H	1:B:348:ASN:ND2	2.16	0.43
1:B:453:ALA:HB3	1:B:474:MET:HB2	2.00	0.43
1:A:327:HIS:CG	1:A:328:PRO:HD2	2.53	0.43
1:B:290:LYS:H	1:B:290:LYS:CD	2.24	0.43
1:A:134:LEU:O	1:A:138:ILE:HD13	2.19	0.43
1:B:241:PHE:HB3	1:B:242:PRO:HD2	2.00	0.43
1:A:239:THR:O	1:A:361:CYS:HA	2.19	0.43
1:B:422:LYS:HB3	1:B:422:LYS:HE2	1.63	0.43
1:A:290:LYS:H	1:A:290:LYS:CD	2.25	0.42
1:A:326:GLU:CD	1:A:422:LYS:HZ2	2.22	0.42
1:B:439:LYS:O	1:B:442:GLN:HG2	2.19	0.42
1:A:188:TRP:CZ3	1:A:200:TRP:HA	2.54	0.42
1:B:182:PHE:CE1	1:B:186:MET:HE2	2.54	0.42
1:A:220:HIS:CD2	1:A:223:ARG:HH22	2.35	0.42
1:A:241:PHE:HB3	1:A:242:PRO:HD2	2.01	0.42
1:A:290:LYS:HA	1:A:291:PRO:HD2	1.94	0.42
1:B:191:ALA:O	1:B:197:ARG:HD2	2.20	0.42
1:B:368:MET:CE	1:B:433:ALA:CB	2.97	0.42
1:A:439:LYS:O	1:A:442:GLN:HG2	2.20	0.42
1:B:188:TRP:CZ3	1:B:200:TRP:HA	2.54	0.42
1:A:257:GLN:NE2	6:A:904:HOH:O	2.52	0.42
1:B:239:THR:O	1:B:361:CYS:HA	2.20	0.42
1:B:225:ILE:HD11	6:B:1997:HOH:O	2.20	0.42
1:A:375:ARG:HG2	1:A:375:ARG:NH1	2.34	0.41
1:B:134:LEU:O	1:B:138:ILE:HD13	2.19	0.41
1:B:348:ASN:HB2	6:B:1989:HOH:O	2.19	0.41
3:A:901:HEM:HBA1	5:A:800:I58:HD2	2.02	0.41
1:B:290:LYS:HA	1:B:291:PRO:HD2	1.94	0.41
1:A:191:ALA:O	1:A:197:ARG:HD2	2.20	0.41
1:B:361:CYS:SG	1:B:361:CYS:O	2.78	0.41
1:A:209:ARG:O	1:A:242:PRO:HG3	2.21	0.41

*Continued on next page...*

Continued from previous page...

Atom-1	Atom-2	Interatomic distance (Å)	Clash overlap (Å)
1:A:368:MET:CE	1:A:433:ALA:CB	2.98	0.41
1:B:290:LYS:N	1:B:290:LYS:CD	2.82	0.41
1:B:375:ARG:NH1	1:B:379:ASP:OD2	2.54	0.41
1:A:430:HIS:H	1:A:430:HIS:CD2	2.39	0.41
1:B:430:HIS:H	1:B:430:HIS:CD2	2.39	0.41
1:A:428:MET:HB3	1:A:428:MET:HE3	1.90	0.41
1:B:348:ASN:HD22	1:B:348:ASN:N	2.18	0.41
1:B:375:ARG:HH11	1:B:375:ARG:CG	2.34	0.40
1:B:428:MET:HE3	1:B:433:ALA:HB2	2.03	0.40
1:B:195:ILE:HG12	6:B:1931:HOH:O	2.20	0.40
1:B:445:TYR:O	1:B:449:GLY:HA2	2.21	0.40
1:A:80:ARG:HE	1:A:89:ILE:HG21	1.86	0.40
1:A:190:ASN:O	1:A:192:PRO:HD3	2.21	0.40
1:A:258:LEU:HD12	1:A:258:LEU:HA	1.88	0.40
1:B:186:MET:HE1	1:B:189:ARG:NH1	2.33	0.40
1:A:445:TYR:O	1:A:449:GLY:HA2	2.21	0.40
1:A:116:PRO:HG2	1:A:119:LEU:HB2	2.03	0.40
1:A:349:MET:HE3	1:A:363:PHE:HZ	1.86	0.40
1:B:110:LEU:HD22	1:B:110:LEU:N	2.37	0.40

There are no symmetry-related clashes.

## 5.3 Torsion angles [i](#)

### 5.3.1 Protein backbone [i](#)

In the following table, the Percentiles column shows the percent Ramachandran outliers of the chain as a percentile score with respect to all X-ray entries followed by that with respect to entries of similar resolution.

The Analysed column shows the number of residues for which the backbone conformation was analysed, and the total number of residues.

Mol	Chain	Analysed	Favoured	Allowed	Outliers	Percentiles	
1	A	409/433 (94%)	386 (94%)	21 (5%)	2 (0%)	29	35
1	B	409/433 (94%)	383 (94%)	24 (6%)	2 (0%)	29	35
All	All	818/866 (94%)	769 (94%)	45 (6%)	4 (0%)	29	35

All (4) Ramachandran outliers are listed below:

Mol	Chain	Res	Type
1	B	197	ARG
1	A	197	ARG
1	B	431	HIS
1	A	431	HIS

### 5.3.2 Protein sidechains [i](#)

In the following table, the Percentiles column shows the percent sidechain outliers of the chain as a percentile score with respect to all X-ray entries followed by that with respect to entries of similar resolution.

The Analysed column shows the number of residues for which the sidechain conformation was analysed, and the total number of residues.

Mol	Chain	Analysed	Rotameric	Outliers	Percentiles	
1	A	361/381 (95%)	338 (94%)	23 (6%)	17	23
1	B	361/381 (95%)	337 (93%)	24 (7%)	16	22
All	All	722/762 (95%)	675 (94%)	47 (6%)	17	23

All (47) residues with a non-rotameric sidechain are listed below:

Mol	Chain	Res	Type
1	A	81	ILE
1	A	119	LEU
1	A	125	ASP
1	A	149	LYS
1	A	178	ASP
1	A	195	ILE
1	A	258	LEU
1	A	260	ARG
1	A	290	LYS
1	A	301	LEU
1	A	314	GLU
1	A	319	LEU
1	A	321	LEU
1	A	334	GLN
1	A	348	ASN
1	A	375	ARG
1	A	381	GLN
1	A	399	THR
1	A	406	ASP
1	A	411	GLU

*Continued on next page...*

*Continued from previous page...*

<b>Mol</b>	<b>Chain</b>	<b>Res</b>	<b>Type</b>
1	A	417	LEU
1	A	494	ILE
1	A	495	TRP
1	B	81	ILE
1	B	119	LEU
1	B	125	ASP
1	B	149	LYS
1	B	178	ASP
1	B	195	ILE
1	B	258	LEU
1	B	260	ARG
1	B	290	LYS
1	B	301	LEU
1	B	314	GLU
1	B	319	LEU
1	B	321	LEU
1	B	334	GLN
1	B	348	ASN
1	B	375	ARG
1	B	381	GLN
1	B	399	THR
1	B	406	ASP
1	B	411	GLU
1	B	417	LEU
1	B	474	MET
1	B	494	ILE
1	B	495	TRP

Sometimes sidechains can be flipped to improve hydrogen bonding and reduce clashes. All (18) such sidechains are listed below:

<b>Mol</b>	<b>Chain</b>	<b>Res</b>	<b>Type</b>
1	A	95	HIS
1	A	199	GLN
1	A	219	GLN
1	A	220	HIS
1	A	231	ASN
1	A	257	GLN
1	A	348	ASN
1	A	430	HIS
1	A	486	GLN
1	B	95	HIS
1	B	199	GLN

*Continued on next page...*



Continued from previous page...

Mol	Chain	Res	Type
1	B	219	GLN
1	B	220	HIS
1	B	257	GLN
1	B	348	ASN
1	B	423	GLN
1	B	430	HIS
1	B	486	GLN

### 5.3.3 RNA [i](#)

There are no RNA molecules in this entry.

### 5.4 Non-standard residues in protein, DNA, RNA chains [i](#)

There are no non-standard protein/DNA/RNA residues in this entry.

### 5.5 Carbohydrates [i](#)

There are no monosaccharides in this entry.

### 5.6 Ligand geometry [i](#)

7 ligands are modelled in this entry.

In the following table, the Counts columns list the number of bonds (or angles) for which Mogul statistics could be retrieved, the number of bonds (or angles) that are observed in the model and the number of bonds (or angles) that are defined in the Chemical Component Dictionary. The Link column lists molecule types, if any, to which the group is linked. The Z score for a bond length (or angle) is the number of standard deviations the observed value is removed from the expected value. A bond length (or angle) with  $|Z| > 2$  is considered an outlier worth inspection. RMSZ is the root-mean-square of all Z scores of the bond lengths (or angles).

Mol	Type	Chain	Res	Link	Bond lengths			Bond angles		
					Counts	RMSZ	# Z  > 2	Counts	RMSZ	# Z  > 2
5	I58	B	1800	-	12,13,13	2.16	5 (41%)	10,16,16	1.72	2 (20%)
3	HEM	B	901	1	41,50,50	1.39	6 (14%)	45,82,82	1.52	5 (11%)
4	H4B	B	1902	-	16,18,18	1.98	3 (18%)	11,26,26	2.40	5 (45%)
4	H4B	A	902	-	16,18,18	1.92	4 (25%)	11,26,26	2.42	5 (45%)
5	I58	A	800	-	12,13,13	2.15	5 (41%)	10,16,16	1.75	2 (20%)

Mol	Type	Chain	Res	Link	Bond lengths			Bond angles		
					Counts	RMSZ	# Z  > 2	Counts	RMSZ	# Z  > 2
3	HEM	A	901	1	41,50,50	1.39	7 (17%)	45,82,82	1.53	6 (13%)
2	SO4	A	903	-	4,4,4	0.44	0	6,6,6	0.07	0

In the following table, the Chirals column lists the number of chiral outliers, the number of chiral centers analysed, the number of these observed in the model and the number defined in the Chemical Component Dictionary. Similar counts are reported in the Torsion and Rings columns. '-' means no outliers of that kind were identified.

Mol	Type	Chain	Res	Link	Chirals	Torsions	Rings
5	I58	B	1800	-	-	5/13/14/14	-
3	HEM	B	901	1	-	5/12/54/54	-
4	H4B	B	1902	-	-	4/8/17/17	0/2/2/2
4	H4B	A	902	-	-	4/8/17/17	0/2/2/2
5	I58	A	800	-	-	5/13/14/14	-
3	HEM	A	901	1	-	5/12/54/54	-

All (30) bond length outliers are listed below:

Mol	Chain	Res	Type	Atoms	Z	Observed(Å)	Ideal(Å)
4	B	1902	H4B	C7-N8	4.83	1.52	1.44
4	A	902	H4B	C7-N8	4.41	1.52	1.44
5	B	1800	I58	O-C	4.25	1.35	1.22
5	A	800	I58	CT-CX	4.13	1.60	1.49
5	B	1800	I58	CT-CX	4.00	1.60	1.49
5	A	800	I58	O-C	3.96	1.34	1.22
4	A	902	H4B	C4A-C8A	-3.45	1.34	1.41
4	B	1902	H4B	C4A-C8A	-3.37	1.35	1.41
3	A	901	HEM	C3C-CAC	-3.23	1.41	1.47
3	B	901	HEM	C3C-CAC	-3.19	1.41	1.47
4	A	902	H4B	C7-C6	2.92	1.55	1.52
5	A	800	I58	CD-CG	2.73	1.56	1.50
4	B	1902	H4B	C2-N1	-2.65	1.30	1.35
5	B	1800	I58	CX-NX	2.62	1.35	1.27
5	A	800	I58	CX-NX	2.61	1.35	1.27
3	B	901	HEM	CBD-CAD	-2.59	1.43	1.52
4	A	902	H4B	C2-N1	-2.58	1.30	1.35
3	B	901	HEM	CHA-C4D	2.46	1.41	1.35
3	A	901	HEM	C3C-C2C	-2.43	1.37	1.40
5	B	1800	I58	CB-CG	2.39	1.55	1.50
3	A	901	HEM	CHA-C4D	2.39	1.41	1.35
5	B	1800	I58	CD-CG	2.39	1.55	1.50

Continued on next page...

Continued from previous page...

Mol	Chain	Res	Type	Atoms	Z	Observed(Å)	Ideal(Å)
3	B	901	HEM	C3C-C2C	-2.35	1.37	1.40
5	A	800	I58	CB-CG	2.31	1.55	1.50
3	A	901	HEM	CBD-CAD	-2.30	1.44	1.52
3	A	901	HEM	C4D-C3D	2.20	1.48	1.45
3	B	901	HEM	C4D-C3D	2.11	1.48	1.45
3	B	901	HEM	CAB-C3B	-2.07	1.41	1.47
3	A	901	HEM	C3B-C4B	2.06	1.49	1.44
3	A	901	HEM	CAB-C3B	-2.02	1.41	1.47

All (25) bond angle outliers are listed below:

Mol	Chain	Res	Type	Atoms	Z	Observed(°)	Ideal(°)
4	A	902	H4B	C8A-C4A-C4	5.71	119.64	114.57
4	B	1902	H4B	C8A-C4A-C4	5.48	119.44	114.57
3	B	901	HEM	CAD-C3D-C4D	4.54	132.58	124.66
3	A	901	HEM	CAD-C3D-C4D	4.50	132.53	124.66
3	B	901	HEM	CAD-C3D-C2D	-4.08	120.28	127.88
3	A	901	HEM	CAD-C3D-C2D	-4.05	120.34	127.88
5	B	1800	I58	CT-CX-NZ	3.81	119.12	114.24
5	A	800	I58	CT-CX-NZ	3.78	119.08	114.24
4	B	1902	H4B	C2-N1-C8A	2.95	121.15	114.54
4	A	902	H4B	C2-N1-C8A	2.82	120.86	114.54
4	B	1902	H4B	C2-N3-C4	2.69	120.20	115.93
4	A	902	H4B	C2-N3-C4	2.60	120.06	115.93
3	A	901	HEM	C4B-CHC-C1C	2.41	125.74	122.56
3	B	901	HEM	C4B-CHC-C1C	2.40	125.72	122.56
3	A	901	HEM	CBD-CAD-C3D	2.30	119.02	112.63
3	A	901	HEM	C4C-CHD-C1D	2.30	125.59	122.56
3	B	901	HEM	CBD-CAD-C3D	2.28	118.96	112.63
3	B	901	HEM	C4C-CHD-C1D	2.26	125.55	122.56
5	A	800	I58	CB-CA-N	-2.22	105.38	110.32
4	B	1902	H4B	N1-C2-N3	-2.18	121.99	125.42
5	B	1800	I58	CB-CA-N	-2.17	105.49	110.32
4	B	1902	H4B	C4A-C4-N3	-2.12	117.99	124.01
4	A	902	H4B	N1-C2-N3	-2.11	122.11	125.42
4	A	902	H4B	C4A-C4-N3	-2.08	118.10	124.01
3	A	901	HEM	C2B-C1B-NB	2.03	112.25	109.84

There are no chirality outliers.

All (28) torsion outliers are listed below:

Mol	Chain	Res	Type	Atoms
3	A	901	HEM	C2D-C3D-CAD-CBD
3	A	901	HEM	C4D-C3D-CAD-CBD
3	B	901	HEM	C2D-C3D-CAD-CBD
3	B	901	HEM	C4D-C3D-CAD-CBD
4	A	902	H4B	C11-C10-C9-C6
4	B	1902	H4B	C11-C10-C9-C6
5	A	800	I58	N-CA-CB-CG
5	A	800	I58	CE-CD-CG-F
5	B	1800	I58	N-CA-CB-CG
5	B	1800	I58	CE-CD-CG-F
4	B	1902	H4B	C11-C10-C9-O9
4	B	1902	H4B	O10-C10-C9-O9
5	A	800	I58	C-CA-CB-CG
5	B	1800	I58	C-CA-CB-CG
4	A	902	H4B	O10-C10-C9-O9
4	A	902	H4B	C11-C10-C9-O9
3	A	901	HEM	C4B-C3B-CAB-CBB
3	B	901	HEM	C4B-C3B-CAB-CBB
5	A	800	I58	CA-CB-CG-F
5	B	1800	I58	CA-CB-CG-F
4	A	902	H4B	O10-C10-C9-C6
4	B	1902	H4B	O10-C10-C9-C6
5	A	800	I58	CA-CB-CG-CD
5	B	1800	I58	CA-CB-CG-CD
3	A	901	HEM	CAD-CBD-CGD-O2D
3	B	901	HEM	CAD-CBD-CGD-O2D
3	A	901	HEM	CAD-CBD-CGD-O1D
3	B	901	HEM	CAD-CBD-CGD-O1D

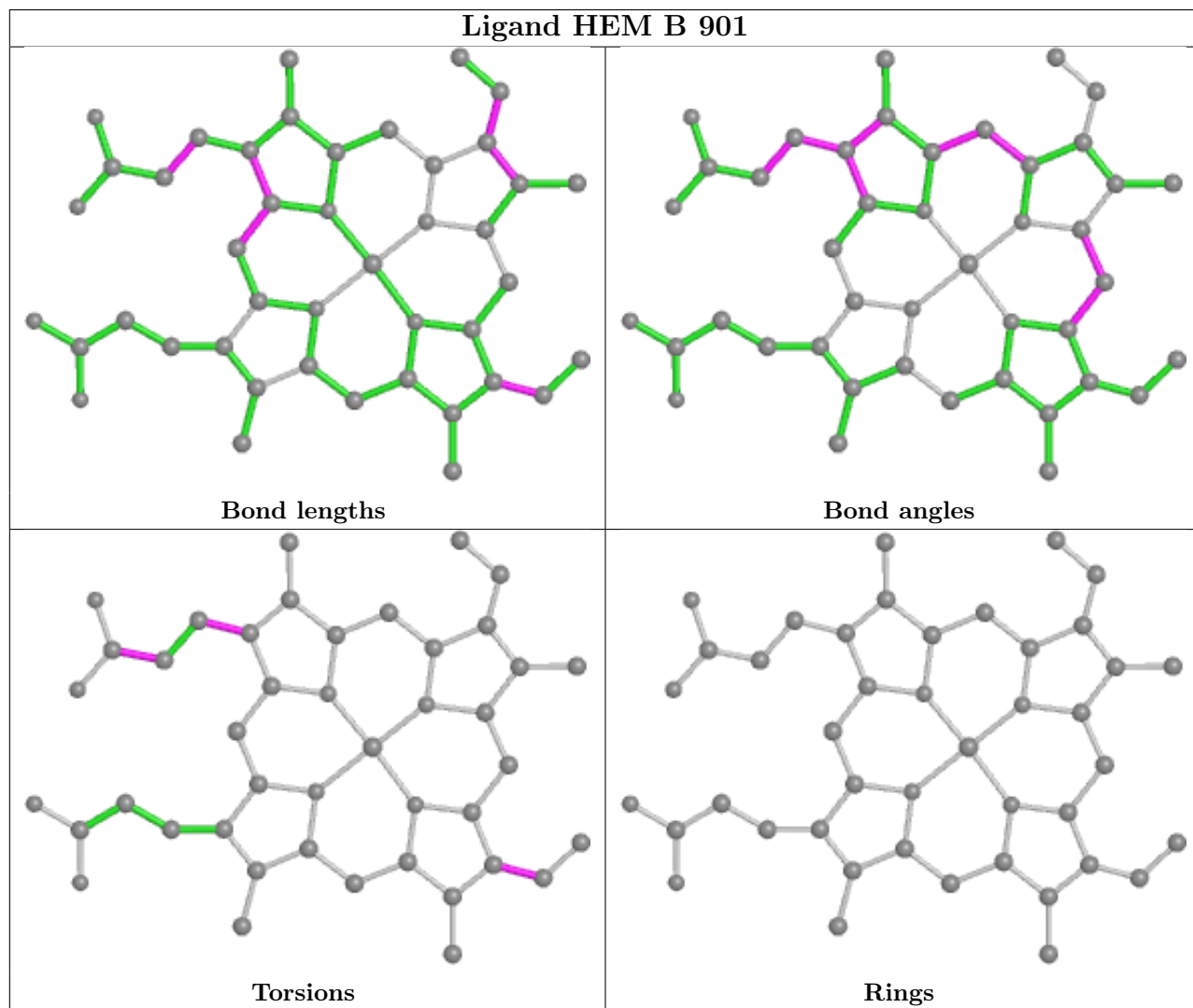
There are no ring outliers.

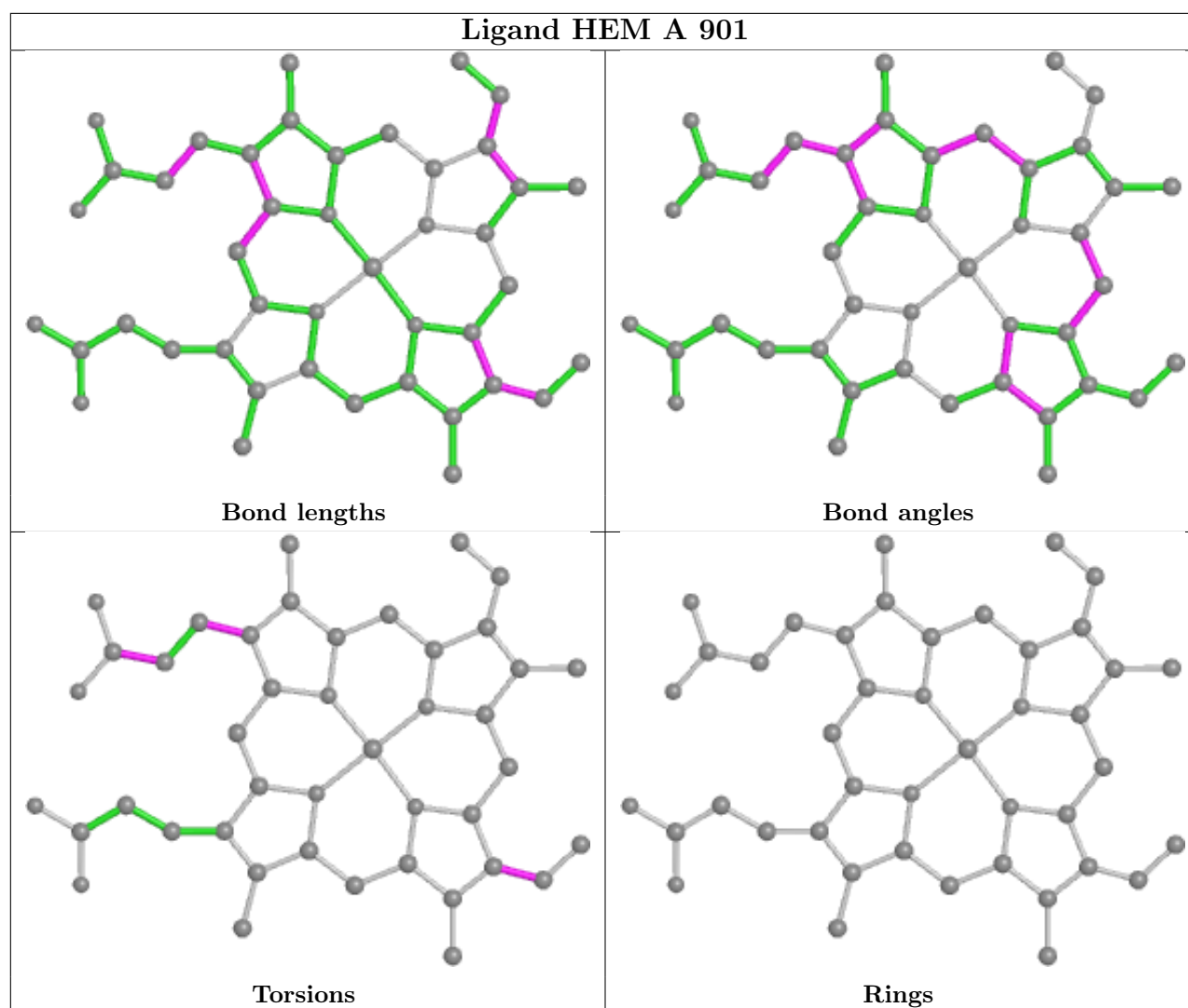
6 monomers are involved in 28 short contacts:

Mol	Chain	Res	Type	Clashes	Symm-Clashes
5	B	1800	I58	2	0
3	B	901	HEM	10	0
4	B	1902	H4B	3	0
4	A	902	H4B	2	0
5	A	800	I58	3	0
3	A	901	HEM	10	0

The following is a two-dimensional graphical depiction of Mogul quality analysis of bond lengths, bond angles, torsion angles, and ring geometry for all instances of the Ligand of Interest. In addition, ligands with molecular weight > 250 and outliers as shown on the validation Tables will

also be included. For torsion angles, if less than 5% of the Mogul distribution of torsion angles is within 10 degrees of the torsion angle in question, then that torsion angle is considered an outlier. Any bond that is central to one or more torsion angles identified as an outlier by Mogul will be highlighted in the graph. For rings, the root-mean-square deviation (RMSD) between the ring in question and similar rings identified by Mogul is calculated over all ring torsion angles. If the average RMSD is greater than 60 degrees and the minimal RMSD between the ring in question and any Mogul-identified rings is also greater than 60 degrees, then that ring is considered an outlier. The outliers are highlighted in purple. The color gray indicates Mogul did not find sufficient equivalents in the CSD to analyse the geometry.





## 5.7 Other polymers [i](#)

There are no such residues in this entry.

## 5.8 Polymer linkage issues [i](#)

There are no chain breaks in this entry.

## 6 Fit of model and data

### 6.1 Protein, DNA and RNA chains

EDS was not executed - this section is therefore empty.

### 6.2 Non-standard residues in protein, DNA, RNA chains

EDS was not executed - this section is therefore empty.

### 6.3 Carbohydrates

EDS was not executed - this section is therefore empty.

### 6.4 Ligands

EDS was not executed - this section is therefore empty.

### 6.5 Other polymers

EDS was not executed - this section is therefore empty.