



# Full wwPDB X-ray Structure Validation Report ⓘ

Aug 7, 2020 – 03:26 AM BST

PDB ID : 3MJ7  
Title : Crystal structure of the complex of JAML and Coxsackie and Adenovirus receptor, CAR  
Authors : Verdino, P.; Wilson, I.A.  
Deposited on : 2010-04-12  
Resolution : 2.80 Å(reported)

This is a Full wwPDB X-ray Structure Validation Report for a publicly released PDB entry.

We welcome your comments at [validation@mail.wwpdb.org](mailto:validation@mail.wwpdb.org)

A user guide is available at

<https://www.wwpdb.org/validation/2017/XrayValidationReportHelp>

with specific help available everywhere you see the ⓘ symbol.

---

The following versions of software and data (see [references ⓘ](#)) were used in the production of this report:

MolProbity : 4.02b-467  
Mogul : 1.8.5 (274361), CSD as541be (2020)  
Xtriage (Phenix) : 1.13  
EDS : 2.13.1  
Percentile statistics : 20191225.v01 (using entries in the PDB archive December 25th 2019)  
Refmac : 5.8.0158  
CCP4 : 7.0.044 (Gargrove)  
Ideal geometry (proteins) : Engh & Huber (2001)  
Ideal geometry (DNA, RNA) : Parkinson et al. (1996)  
Validation Pipeline (wwPDB-VP) : 2.13.1

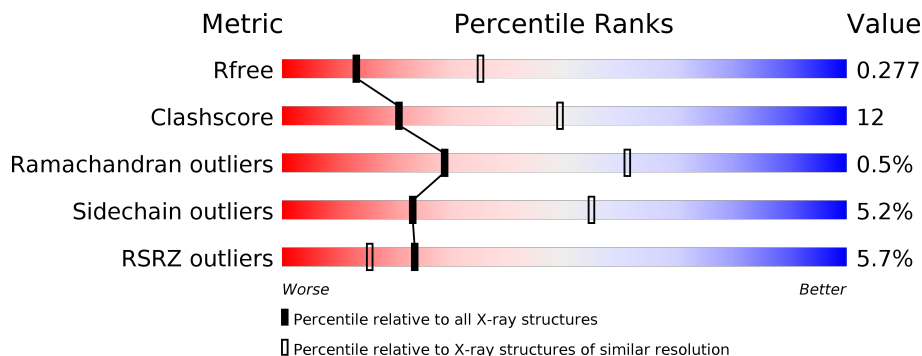
# 1 Overall quality at a glance

The following experimental techniques were used to determine the structure:

*X-RAY DIFFRACTION*

The reported resolution of this entry is 2.80 Å.

Percentile scores (ranging between 0-100) for global validation metrics of the entry are shown in the following graphic. The table shows the number of entries on which the scores are based.



Metric	Whole archive (#Entries)	Similar resolution (#Entries, resolution range(Å))
$R_{free}$	130704	3140 (2.80-2.80)
Clashscore	141614	3569 (2.80-2.80)
Ramachandran outliers	138981	3498 (2.80-2.80)
Sidechain outliers	138945	3500 (2.80-2.80)
RSRZ outliers	127900	3078 (2.80-2.80)

The table below summarises the geometric issues observed across the polymeric chains and their fit to the electron density. The red, orange, yellow and green segments on the lower bar indicate the fraction of residues that contain outliers for  $\geq 3$ , 2, 1 and 0 types of geometric quality criteria respectively. A grey segment represents the fraction of residues that are not modelled. The numeric value for each fraction is indicated below the corresponding segment, with a dot representing fractions  $\leq 5\%$ . The upper red bar (where present) indicates the fraction of residues that have poor fit to the electron density. The numeric value is given above the bar.

Mol	Chain	Length	Quality of chain
1	A	268	<p>2% 69% 15% 15%</p>
2	B	225	<p>8% 54% 27% 16%</p>
3	C	5	<p>20% 60% 20%</p>
4	D	2	<p>50% 50%</p>

## 2 Entry composition [i](#)

There are 5 unique types of molecules in this entry. The entry contains 3440 atoms, of which 0 are hydrogens and 0 are deuteriums.

In the tables below, the ZeroOcc column contains the number of atoms modelled with zero occupancy, the AltConf column contains the number of residues with at least one atom in alternate conformation and the Trace column contains the number of residues modelled with at most 2 atoms.

- Molecule 1 is a protein called Junctional adhesion molecule-like.

Mol	Chain	Residues	Atoms					ZeroOcc	AltConf	Trace
			Total	C	N	O	S			
1	A	229	1851	1150	329	362	10	0	0	0

There are 10 discrepancies between the modelled and reference sequences:

Chain	Residue	Modelled	Actual	Comment	Reference
A	-1	ARG	-	expression tag	UNP Q80UL9
A	0	SER	-	expression tag	UNP Q80UL9
A	124	ARG	LYS	engineered mutation	UNP Q80UL9
A	211	GLN	ARG	engineered mutation	UNP Q80UL9
A	261	HIS	-	expression tag	UNP Q80UL9
A	262	HIS	-	expression tag	UNP Q80UL9
A	263	HIS	-	expression tag	UNP Q80UL9
A	264	HIS	-	expression tag	UNP Q80UL9
A	265	HIS	-	expression tag	UNP Q80UL9
A	266	HIS	-	expression tag	UNP Q80UL9

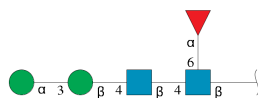
- Molecule 2 is a protein called Coxsackievirus and adenovirus receptor homolog.

Mol	Chain	Residues	Atoms					ZeroOcc	AltConf	Trace
			Total	C	N	O	S			
2	B	189	1487	946	245	287	9	0	0	0

There are 6 discrepancies between the modelled and reference sequences:

Chain	Residue	Modelled	Actual	Comment	Reference
B	218	HIS	-	expression tag	UNP P97792
B	219	HIS	-	expression tag	UNP P97792
B	220	HIS	-	expression tag	UNP P97792
B	221	HIS	-	expression tag	UNP P97792
B	222	HIS	-	expression tag	UNP P97792
B	223	HIS	-	expression tag	UNP P97792

- Molecule 3 is an oligosaccharide called alpha-D-mannopyranose-(1-3)-beta-D-mannopyranos e-(1-4)-2-acetamido-2-deoxy-beta-D-glucopyranose-(1-4)-[alpha-L-fucopyranose-(1-6)]2-acet amido-2-deoxy-beta-D-glucopyranose.



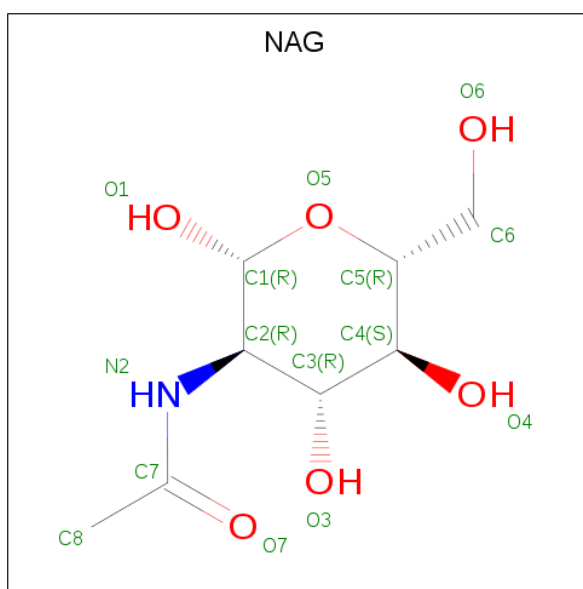
Mol	Chain	Residues	Atoms				ZeroOcc	AltConf	Trace
			Total	C	N	O			
3	C	5	60	34	2	24	0	0	0

- Molecule 4 is an oligosaccharide called 2-acetamido-2-deoxy-beta-D-glucopyranose-(1-4)-2-a cetamido-2-deoxy-beta-D-glucopyranose.



Mol	Chain	Residues	Atoms				ZeroOcc	AltConf	Trace
			Total	C	N	O			
4	D	2	28	16	2	10	0	0	0

- Molecule 5 is 2-acetamido-2-deoxy-beta-D-glucopyranose (three-letter code: NAG) (formula: C<sub>8</sub>H<sub>15</sub>NO<sub>6</sub>).

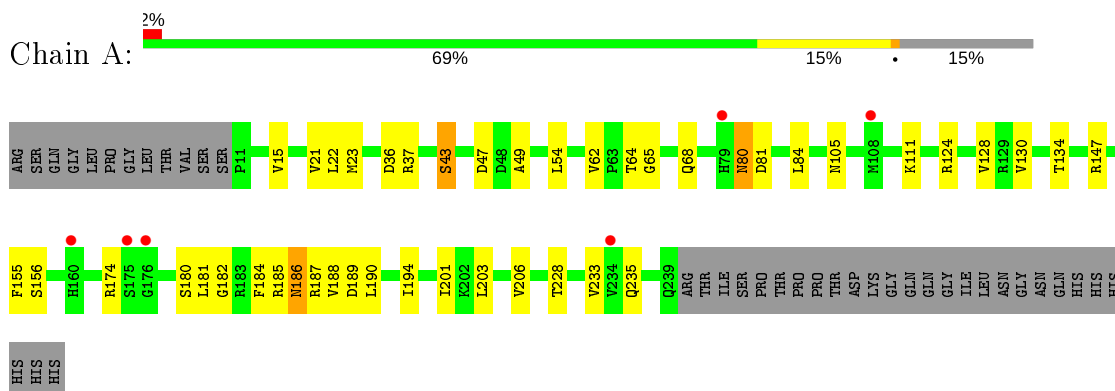


Mol	Chain	Residues	Atoms				ZeroOcc	AltConf
			Total	C	N	O		
5	A	1	14	8	1	5	0	0

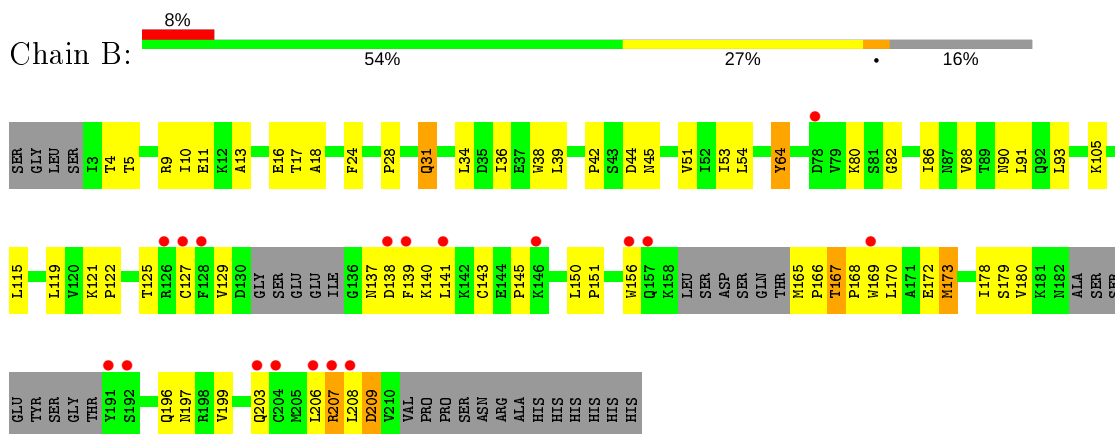
### 3 Residue-property plots [i](#)

These plots are drawn for all protein, RNA, DNA and oligosaccharide chains in the entry. The first graphic for a chain summarises the proportions of the various outlier classes displayed in the second graphic. The second graphic shows the sequence view annotated by issues in geometry and electron density. Residues are color-coded according to the number of geometric quality criteria for which they contain at least one outlier: green = 0, yellow = 1, orange = 2 and red = 3 or more. A red dot above a residue indicates a poor fit to the electron density ( $RSRZ > 2$ ). Stretches of 2 or more consecutive residues without any outlier are shown as a green connector. Residues present in the sample, but not in the model, are shown in grey.

- Molecule 1: Junctional adhesion molecule-like



- Molecule 2: Coxsackievirus and adenovirus receptor homolog



- Molecule 3: alpha-D-mannopyranose-(1-3)-beta-D-mannopyranose-(1-4)-2-acetamido-2-deoxy-beta-D-glucopyranose-(1-4)-[alpha-L-fucopyranose-(1-6)]2-acetamido-2-deoxy-beta-D-glucopyranose



- Molecule 4: 2-acetamido-2-deoxy-beta-D-glucopyranose-(1-4)-2-acetamido-2-deoxy-beta-D-glucopyranose

Chain D:  50% 50%

3MJ7  
3MJ7

## 4 Data and refinement statistics

Property	Value	Source
Space group	P 31 1 2	Depositor
Cell constants a, b, c, $\alpha$ , $\beta$ , $\gamma$	89.86Å 89.86Å 127.17Å 90.00° 90.00° 120.00°	Depositor
Resolution (Å)	38.92 – 2.80 38.91 – 2.80	Depositor EDS
% Data completeness (in resolution range)	99.8 (38.92-2.80) 99.8 (38.91-2.80)	Depositor EDS
$R_{merge}$	0.09	Depositor
$R_{sym}$	0.09	Depositor
$\langle I/\sigma(I) \rangle$ <sup>1</sup>	2.33 (at 2.81Å)	Xtrriage
Refinement program	REFMAC 5.4.0069	Depositor
R, $R_{free}$	0.227 , 0.276 0.232 , 0.277	Depositor DCC
$R_{free}$ test set	729 reflections (4.97%)	wwPDB-VP
Wilson B-factor (Å <sup>2</sup> )	63.2	Xtrriage
Anisotropy	0.131	Xtrriage
Bulk solvent $k_{sol}$ (e/Å <sup>3</sup> ), $B_{sol}$ (Å <sup>2</sup> )	0.32 , 53.7	EDS
L-test for twinning <sup>2</sup>	$\langle  L  \rangle = 0.49$ , $\langle L^2 \rangle = 0.31$	Xtrriage
Estimated twinning fraction	0.054 for -h,-k,l	Xtrriage
$F_o, F_c$ correlation	0.92	EDS
Total number of atoms	3440	wwPDB-VP
Average B, all atoms (Å <sup>2</sup> )	68.0	wwPDB-VP

Xtrriage's analysis on translational NCS is as follows: *The largest off-origin peak in the Patterson function is 3.75% of the height of the origin peak. No significant pseudotranslation is detected.*

<sup>1</sup>Intensities estimated from amplitudes.

<sup>2</sup>Theoretical values of  $\langle |L| \rangle$ ,  $\langle L^2 \rangle$  for acentric reflections are 0.5, 0.333 respectively for untwinned datasets, and 0.375, 0.2 for perfectly twinned datasets.



## 5 Model quality [i](#)

### 5.1 Standard geometry [i](#)

Bond lengths and bond angles in the following residue types are not validated in this section: FUC, BMA, NAG, MAN

The Z score for a bond length (or angle) is the number of standard deviations the observed value is removed from the expected value. A bond length (or angle) with  $|Z| > 5$  is considered an outlier worth inspection. RMSZ is the root-mean-square of all Z scores of the bond lengths (or angles).

Mol	Chain	Bond lengths		Bond angles	
		RMSZ	# Z  >5	RMSZ	# Z  >5
1	A	0.44	0/1882	0.67	0/2535
2	B	0.40	0/1516	0.65	0/2053
All	All	0.43	0/3398	0.66	0/4588

There are no bond length outliers.

There are no bond angle outliers.

There are no chirality outliers.

There are no planarity outliers.

### 5.2 Too-close contacts [i](#)

In the following table, the Non-H and H(model) columns list the number of non-hydrogen atoms and hydrogen atoms in the chain respectively. The H(added) column lists the number of hydrogen atoms added and optimized by MolProbity. The Clashes column lists the number of clashes within the asymmetric unit, whereas Symm-Clashes lists symmetry related clashes.

Mol	Chain	Non-H	H(model)	H(added)	Clashes	Symm-Clashes
1	A	1851	0	1815	26	0
2	B	1487	0	1481	54	0
3	C	60	0	52	2	0
4	D	28	0	25	2	0
5	A	14	0	13	0	0
All	All	3440	0	3386	84	0

The all-atom clashscore is defined as the number of clashes found per 1000 atoms (including hydrogen atoms). The all-atom clashscore for this structure is 12.

All (84) close contacts within the same asymmetric unit are listed below, sorted by their clash magnitude.

Atom-1	Atom-2	Interatomic distance (Å)	Clash overlap (Å)
2:B:172:GLU:OE1	2:B:178:ILE:HG23	1.62	0.96
1:A:190:LEU:HD23	1:A:201:ILE:HG22	1.70	0.73
2:B:125:THR:HG22	2:B:145:PRO:HB3	1.72	0.72
2:B:18:ALA:HB2	2:B:91:LEU:HD11	1.73	0.71
2:B:206:LEU:HD23	2:B:207:ARG:N	2.07	0.70
2:B:141:LEU:HB2	2:B:178:ILE:HB	1.74	0.69
2:B:167:THR:HA	2:B:170:LEU:HD12	1.74	0.69
4:D:2:NAG:C8	4:D:2:NAG:H3	2.24	0.68
1:A:128:VAL:CG2	1:A:206:VAL:HG11	2.23	0.68
2:B:206:LEU:HD23	2:B:207:ARG:H	1.65	0.59
1:A:23:MET:CE	1:A:84:LEU:HD23	2.32	0.59
4:D:2:NAG:H3	4:D:2:NAG:H83	1.84	0.58
2:B:36:ILE:O	2:B:54:LEU:HD12	2.03	0.58
2:B:208:LEU:HD12	2:B:209:ASP:N	2.19	0.58
2:B:17:THR:HA	2:B:88:VAL:O	2.05	0.56
1:A:189:ASP:OD2	1:A:190:LEU:N	2.39	0.56
2:B:178:ILE:HG22	2:B:180:VAL:CG2	2.35	0.56
2:B:178:ILE:HG22	2:B:180:VAL:HG23	1.88	0.55
2:B:208:LEU:HD12	2:B:209:ASP:H	1.71	0.55
1:A:54:LEU:HD23	1:A:54:LEU:C	2.28	0.54
1:A:81:ASP:OD2	1:A:147:ARG:NH2	2.41	0.54
1:A:22:LEU:C	1:A:22:LEU:HD23	2.29	0.53
3:C:2:NAG:H83	3:C:2:NAG:O3	2.09	0.52
2:B:125:THR:HG22	2:B:145:PRO:CB	2.39	0.52
1:A:23:MET:HE3	1:A:84:LEU:HD23	1.92	0.52
2:B:169:TRP:NE1	2:B:180:VAL:HG22	2.24	0.52
1:A:188:VAL:HG13	1:A:188:VAL:O	2.09	0.52
1:A:43:SER:OG	1:A:49:ALA:O	2.28	0.52
1:A:62:VAL:HG12	1:A:64:THR:HG22	1.92	0.51
1:A:180:SER:HB3	1:A:184:PHE:HB2	1.92	0.51
1:A:187:ARG:O	1:A:203:LEU:HD12	2.10	0.51
2:B:127:CYS:HB3	2:B:206:LEU:HD12	1.92	0.50
2:B:139:PHE:HB2	2:B:180:VAL:HB	1.92	0.50
2:B:80:LYS:C	2:B:82:GLY:H	2.16	0.48
1:A:182:GLY:O	1:A:185:ARG:HG3	2.14	0.48
2:B:169:TRP:CZ2	2:B:180:VAL:HG21	2.49	0.48
2:B:39:LEU:HD23	2:B:51:VAL:HA	1.95	0.47
1:A:128:VAL:HG21	1:A:206:VAL:HG11	1.96	0.47
2:B:13:ALA:HB3	2:B:16:GLU:OE1	2.14	0.47
2:B:4:THR:OG1	2:B:5:THR:N	2.46	0.47
2:B:28:PRO:O	2:B:31:GLN:NE2	2.45	0.47
2:B:129:VAL:HG23	2:B:141:LEU:CD2	2.45	0.47

*Continued on next page...*

*Continued from previous page...*

Atom-1	Atom-2	Interatomic distance (Å)	Clash overlap (Å)
1:A:23:MET:HE1	1:A:84:LEU:HD23	1.95	0.46
2:B:125:THR:HA	2:B:145:PRO:HA	1.97	0.46
1:A:65:GLY:O	1:A:68:GLN:HB2	2.15	0.46
1:A:36:ASP:O	1:A:37:ARG:HG3	2.16	0.46
2:B:143:CYS:HB2	2:B:156:TRP:CH2	2.50	0.46
1:A:80:ASN:OD1	1:A:80:ASN:N	2.49	0.45
1:A:155:PHE:O	1:A:156:SER:HB3	2.17	0.45
1:A:206:VAL:HG11	1:A:233:VAL:HG22	1.98	0.45
2:B:38:TRP:HB2	2:B:53:ILE:HG22	1.98	0.45
2:B:54:LEU:HD23	2:B:64:TYR:OH	2.17	0.45
2:B:165:MET:N	2:B:166:PRO:HD3	2.32	0.45
2:B:42:PRO:C	2:B:44:ASP:H	2.21	0.45
2:B:39:LEU:CD2	2:B:51:VAL:HG22	2.47	0.44
2:B:34:LEU:HB2	2:B:105:LYS:HD2	2.00	0.44
2:B:80:LYS:C	2:B:82:GLY:N	2.71	0.44
2:B:169:TRP:CE2	2:B:180:VAL:HG22	2.52	0.44
2:B:140:LYS:HG2	2:B:179:SER:HA	2.00	0.43
2:B:150:LEU:HB3	2:B:151:PRO:HA	2.00	0.43
2:B:121:LYS:HA	2:B:199:VAL:HG23	2.00	0.43
2:B:178:ILE:O	2:B:180:VAL:HG23	2.18	0.43
2:B:122:PRO:HD3	2:B:197:ASN:ND2	2.33	0.43
2:B:9:ARG:O	2:B:10:ILE:HD13	2.19	0.43
2:B:11:GLU:OE2	2:B:119:LEU:HD11	2.19	0.43
1:A:206:VAL:CG1	1:A:233:VAL:HG22	2.49	0.43
2:B:129:VAL:HG23	2:B:141:LEU:HD23	2.01	0.43
2:B:39:LEU:HD21	2:B:51:VAL:HG22	2.02	0.42
2:B:24:PHE:CE1	2:B:82:GLY:HA2	2.55	0.42
2:B:127:CYS:HB3	2:B:206:LEU:HB2	2.02	0.42
2:B:156:TRP:HD1	2:B:173:MET:O	2.02	0.41
2:B:42:PRO:C	2:B:44:ASP:N	2.73	0.41
2:B:38:TRP:CD2	2:B:86:ILE:HD13	2.55	0.41
1:A:194:ILE:HG22	1:A:194:ILE:O	2.20	0.41
1:A:130:VAL:HG21	1:A:235:GLN:HB2	2.02	0.41
2:B:143:CYS:HB2	2:B:156:TRP:CZ2	2.56	0.41
3:C:2:NAG:C8	3:C:2:NAG:C3	2.98	0.41
1:A:186:ASN:OD1	1:A:186:ASN:N	2.53	0.41
2:B:167:THR:OG1	2:B:168:PRO:HD3	2.20	0.41
2:B:91:LEU:HA	2:B:91:LEU:HD23	1.91	0.41
2:B:93:LEU:HD23	2:B:93:LEU:HA	1.84	0.41
1:A:15:VAL:HG11	1:A:21:VAL:HB	2.03	0.40
2:B:137:ASN:CG	2:B:138:ASP:H	2.24	0.40

*Continued on next page...*

Continued from previous page...

Atom-1	Atom-2	Interatomic distance (Å)	Clash overlap (Å)
2:B:166:PRO:O	2:B:170:LEU:HG	2.22	0.40

There are no symmetry-related clashes.

## 5.3 Torsion angles [i](#)

### 5.3.1 Protein backbone [i](#)

In the following table, the Percentiles column shows the percent Ramachandran outliers of the chain as a percentile score with respect to all X-ray entries followed by that with respect to entries of similar resolution.

The Analysed column shows the number of residues for which the backbone conformation was analysed, and the total number of residues.

Mol	Chain	Analysed	Favoured	Allowed	Outliers	Percentiles	
1	A	227/268 (85%)	206 (91%)	20 (9%)	1 (0%)	34	66
2	B	181/225 (80%)	160 (88%)	20 (11%)	1 (1%)	25	56
All	All	408/493 (83%)	366 (90%)	40 (10%)	2 (0%)	29	61

All (2) Ramachandran outliers are listed below:

Mol	Chain	Res	Type
1	A	174	ARG
2	B	173	MET

### 5.3.2 Protein sidechains [i](#)

In the following table, the Percentiles column shows the percent sidechain outliers of the chain as a percentile score with respect to all X-ray entries followed by that with respect to entries of similar resolution.

The Analysed column shows the number of residues for which the sidechain conformation was analysed, and the total number of residues.

Mol	Chain	Analysed	Rotameric	Outliers	Percentiles	
1	A	213/247 (86%)	203 (95%)	10 (5%)	26	59
2	B	172/203 (85%)	162 (94%)	10 (6%)	20	50
All	All	385/450 (86%)	365 (95%)	20 (5%)	23	55

All (20) residues with a non-rotameric sidechain are listed below:

Mol	Chain	Res	Type
1	A	43	SER
1	A	47	ASP
1	A	80	ASN
1	A	105	ASN
1	A	111	LYS
1	A	124	ARG
1	A	134	THR
1	A	181	LEU
1	A	186	ASN
1	A	228	THR
2	B	31	GLN
2	B	45	ASN
2	B	64	TYR
2	B	90	ASN
2	B	115	LEU
2	B	167	THR
2	B	196	GLN
2	B	203	GLN
2	B	207	ARG
2	B	209	ASP

Some sidechains can be flipped to improve hydrogen bonding and reduce clashes. All (3) such sidechains are listed below:

Mol	Chain	Res	Type
1	A	68	GLN
1	A	90	GLN
2	B	90	ASN

### 5.3.3 RNA [i](#)

There are no RNA molecules in this entry.

### 5.4 Non-standard residues in protein, DNA, RNA chains [i](#)

There are no non-standard protein/DNA/RNA residues in this entry.

### 5.5 Carbohydrates [i](#)

7 monosaccharides are modelled in this entry.

In the following table, the Counts columns list the number of bonds (or angles) for which Mogul statistics could be retrieved, the number of bonds (or angles) that are observed in the model and the number of bonds (or angles) that are defined in the Chemical Component Dictionary. The Link column lists molecule types, if any, to which the group is linked. The Z score for a bond length (or angle) is the number of standard deviations the observed value is removed from the expected value. A bond length (or angle) with  $|Z| > 2$  is considered an outlier worth inspection. RMSZ is the root-mean-square of all Z scores of the bond lengths (or angles).

Mol	Type	Chain	Res	Link	Bond lengths			Bond angles		
					Counts	RMSZ	# Z  > 2	Counts	RMSZ	# Z  > 2
3	NAG	C	1	1,3	14,14,15	0.60	0	17,19,21	0.87	0
3	NAG	C	2	3	14,14,15	0.65	0	17,19,21	2.36	4 (23%)
3	BMA	C	3	3	11,11,12	0.85	0	15,15,17	1.30	1 (6%)
3	MAN	C	4	3	11,11,12	0.46	0	15,15,17	1.47	2 (13%)
3	FUC	C	5	3	10,10,11	0.55	0	14,14,16	1.04	1 (7%)
4	NAG	D	1	2,4	14,14,15	0.65	0	17,19,21	0.65	0
4	NAG	D	2	4	14,14,15	0.57	0	17,19,21	2.05	4 (23%)

In the following table, the Chirals column lists the number of chiral outliers, the number of chiral centers analysed, the number of these observed in the model and the number defined in the Chemical Component Dictionary. Similar counts are reported in the Torsion and Rings columns. '-' means no outliers of that kind were identified.

Mol	Type	Chain	Res	Link	Chirals	Torsions	Rings
3	NAG	C	1	1,3	-	0/6/23/26	0/1/1/1
3	NAG	C	2	3	-	3/6/23/26	0/1/1/1
3	BMA	C	3	3	-	1/2/19/22	0/1/1/1
3	MAN	C	4	3	-	0/2/19/22	0/1/1/1
3	FUC	C	5	3	-	-	0/1/1/1
4	NAG	D	1	2,4	-	1/6/23/26	0/1/1/1
4	NAG	D	2	4	-	3/6/23/26	0/1/1/1

There are no bond length outliers.

All (12) bond angle outliers are listed below:

Mol	Chain	Res	Type	Atoms	Z	Observed(°)	Ideal(°)
3	C	2	NAG	C2-N2-C7	6.51	132.17	122.90
3	C	2	NAG	C8-C7-N2	5.50	125.40	116.10
4	D	2	NAG	C8-C7-N2	5.01	124.59	116.10
4	D	2	NAG	C2-N2-C7	4.99	130.00	122.90
3	C	4	MAN	C1-O5-C5	4.35	118.09	112.19
3	C	3	BMA	C1-C2-C3	4.04	114.64	109.67
3	C	2	NAG	O7-C7-N2	-2.66	117.05	121.95

*Continued on next page...*

*Continued from previous page...*

Mol	Chain	Res	Type	Atoms	Z	Observed(°)	Ideal(°)
3	C	5	FUC	O2-C2-C1	-2.58	103.87	109.15
3	C	4	MAN	C1-C2-C3	2.51	112.75	109.67
4	D	2	NAG	O7-C7-N2	-2.50	117.36	121.95
3	C	2	NAG	O7-C7-C8	-2.43	117.54	122.06
4	D	2	NAG	O7-C7-C8	-2.16	118.05	122.06

There are no chirality outliers.

All (8) torsion outliers are listed below:

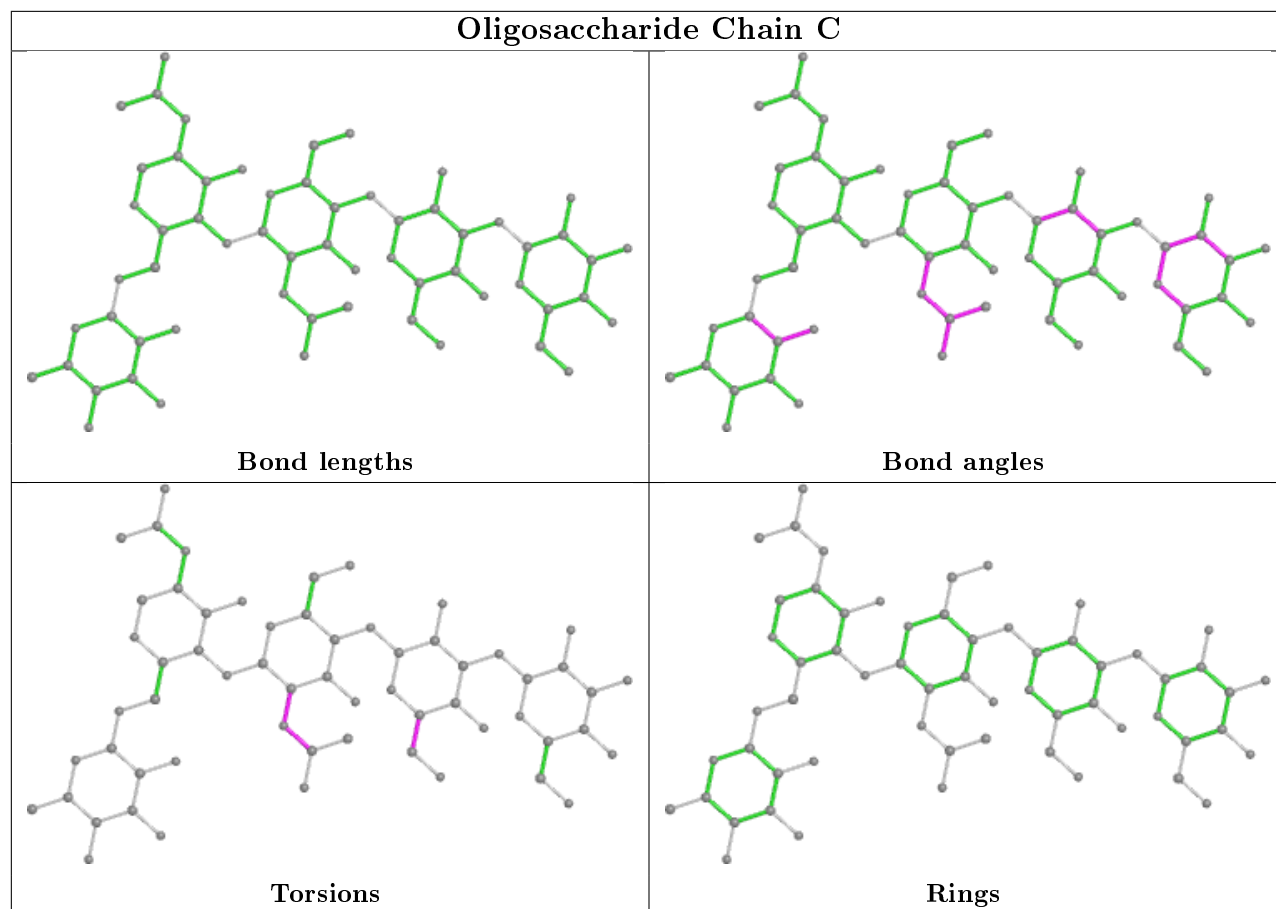
Mol	Chain	Res	Type	Atoms
3	C	2	NAG	C3-C2-N2-C7
4	D	2	NAG	C3-C2-N2-C7
3	C	2	NAG	C8-C7-N2-C2
3	C	2	NAG	O7-C7-N2-C2
4	D	2	NAG	C8-C7-N2-C2
4	D	2	NAG	O7-C7-N2-C2
3	C	3	BMA	O5-C5-C6-O6
4	D	1	NAG	C4-C5-C6-O6

There are no ring outliers.

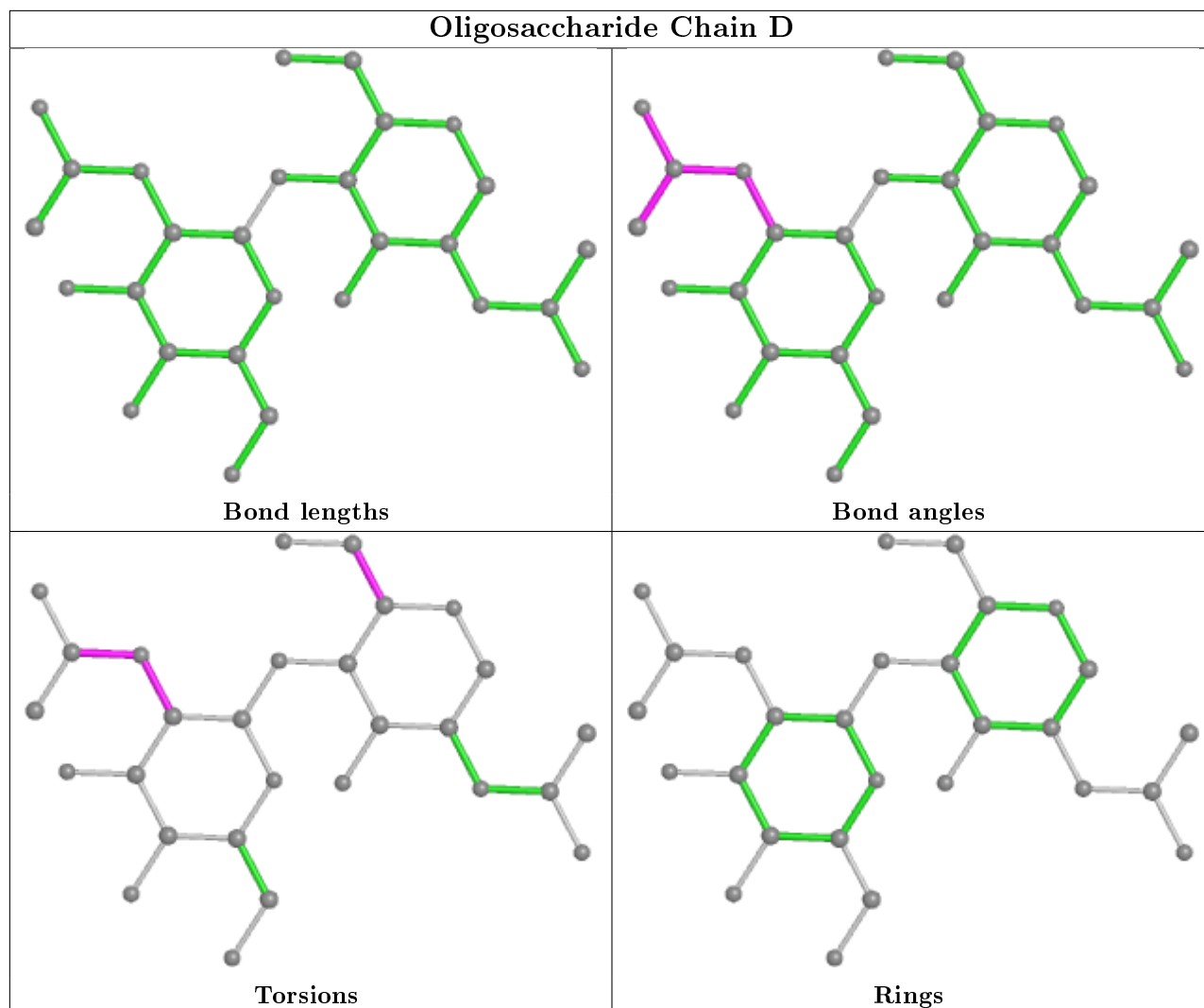
2 monomers are involved in 4 short contacts:

Mol	Chain	Res	Type	Clashes	Symm-Clashes
3	C	2	NAG	2	0
4	D	2	NAG	2	0

The following is a two-dimensional graphical depiction of Mogul quality analysis of bond lengths, bond angles, torsion angles, and ring geometry for oligosaccharide.







## 5.6 Ligand geometry [i](#)

1 ligand is modelled in this entry.

In the following table, the Counts columns list the number of bonds (or angles) for which Mogul statistics could be retrieved, the number of bonds (or angles) that are observed in the model and the number of bonds (or angles) that are defined in the Chemical Component Dictionary. The Link column lists molecule types, if any, to which the group is linked. The Z score for a bond length (or angle) is the number of standard deviations the observed value is removed from the expected value. A bond length (or angle) with  $|Z| > 2$  is considered an outlier worth inspection. RMSZ is the root-mean-square of all Z scores of the bond lengths (or angles).

Mol	Type	Chain	Res	Link	Bond lengths			Bond angles		
					Counts	RMSZ	# Z  > 2	Counts	RMSZ	# Z  > 2
5	NAG	A	501	1	14,14,15	0.53	0	17,19,21	1.54	5 (29%)

In the following table, the Chirals column lists the number of chiral outliers, the number of chiral

centers analysed, the number of these observed in the model and the number defined in the Chemical Component Dictionary. Similar counts are reported in the Torsion and Rings columns. '-' means no outliers of that kind were identified.

Mol	Type	Chain	Res	Link	Chirals	Torsions	Rings
5	NAG	A	501	1	-	1/6/23/26	0/1/1/1

There are no bond length outliers.

All (5) bond angle outliers are listed below:

Mol	Chain	Res	Type	Atoms	Z	Observed(°)	Ideal(°)
5	A	501	NAG	C2-N2-C7	2.62	126.63	122.90
5	A	501	NAG	O5-C5-C6	2.52	111.16	107.20
5	A	501	NAG	C1-O5-C5	-2.45	108.87	112.19
5	A	501	NAG	C1-C2-N2	2.30	114.42	110.49
5	A	501	NAG	O7-C7-N2	2.10	125.81	121.95

There are no chirality outliers.

All (1) torsion outliers are listed below:

Mol	Chain	Res	Type	Atoms
5	A	501	NAG	O5-C5-C6-O6

There are no ring outliers.

No monomer is involved in short contacts.

## 5.7 Other polymers [i](#)

There are no such residues in this entry.

## 5.8 Polymer linkage issues [i](#)

There are no chain breaks in this entry.

## 6 Fit of model and data

### 6.1 Protein, DNA and RNA chains

In the following table, the column labelled ‘#RSRZ> 2’ contains the number (and percentage) of RSRZ outliers, followed by percent RSRZ outliers for the chain as percentile scores relative to all X-ray entries and entries of similar resolution. The OWAB column contains the minimum, median, 95<sup>th</sup> percentile and maximum values of the occupancy-weighted average B-factor per residue. The column labelled ‘Q< 0.9’ lists the number of (and percentage) of residues with an average occupancy less than 0.9.

Mol	Chain	Analysed	<RSRZ>	#RSRZ>2	OWAB(Å <sup>2</sup> )	Q<0.9
1	A	229/268 (85%)	0.08	6 (2%) 56 46	27, 52, 101, 138	0
2	B	189/225 (84%)	0.35	18 (9%) 8 4	38, 81, 106, 116	0
All	All	418/493 (84%)	0.20	24 (5%) 23 15	27, 63, 106, 138	0

All (24) RSRZ outliers are listed below:

Mol	Chain	Res	Type	RSRZ
1	A	176	GLY	5.6
2	B	139	PHE	4.3
1	A	175	SER	4.1
2	B	127	CYS	3.8
2	B	207	ARG	3.7
2	B	156	TRP	3.7
2	B	157	GLN	3.6
2	B	192	SER	3.4
2	B	191	TYR	3.4
2	B	128	PHE	3.1
2	B	204	CYS	2.9
2	B	138	ASP	2.8
1	A	234	VAL	2.8
1	A	160	HIS	2.7
2	B	203	GLN	2.6
2	B	206	LEU	2.6
1	A	79	HIS	2.5
2	B	169	TRP	2.5
2	B	208	LEU	2.4
2	B	141	LEU	2.3
2	B	146	LYS	2.3
2	B	78	ASP	2.3
1	A	108	MET	2.2
2	B	126	ARG	2.2

## 6.2 Non-standard residues in protein, DNA, RNA chains [i](#)

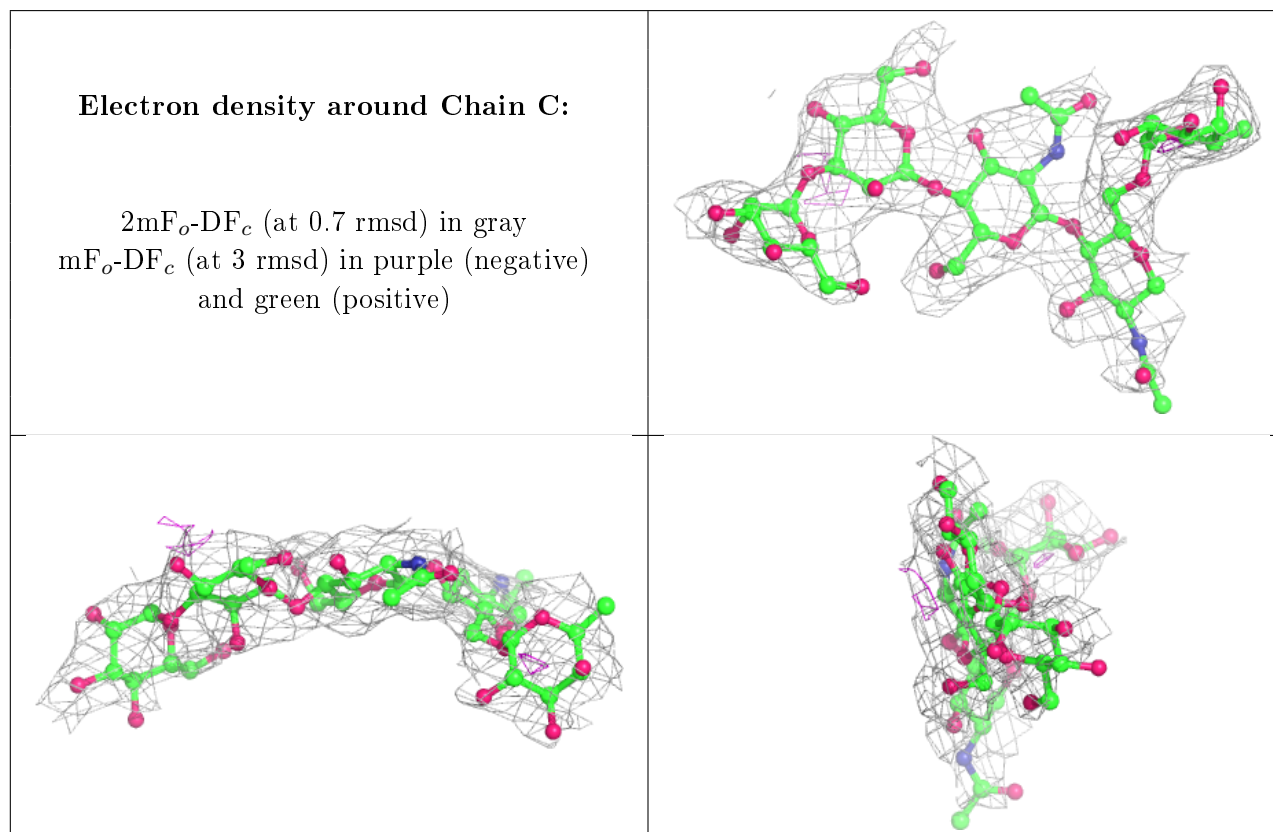
There are no non-standard protein/DNA/RNA residues in this entry.

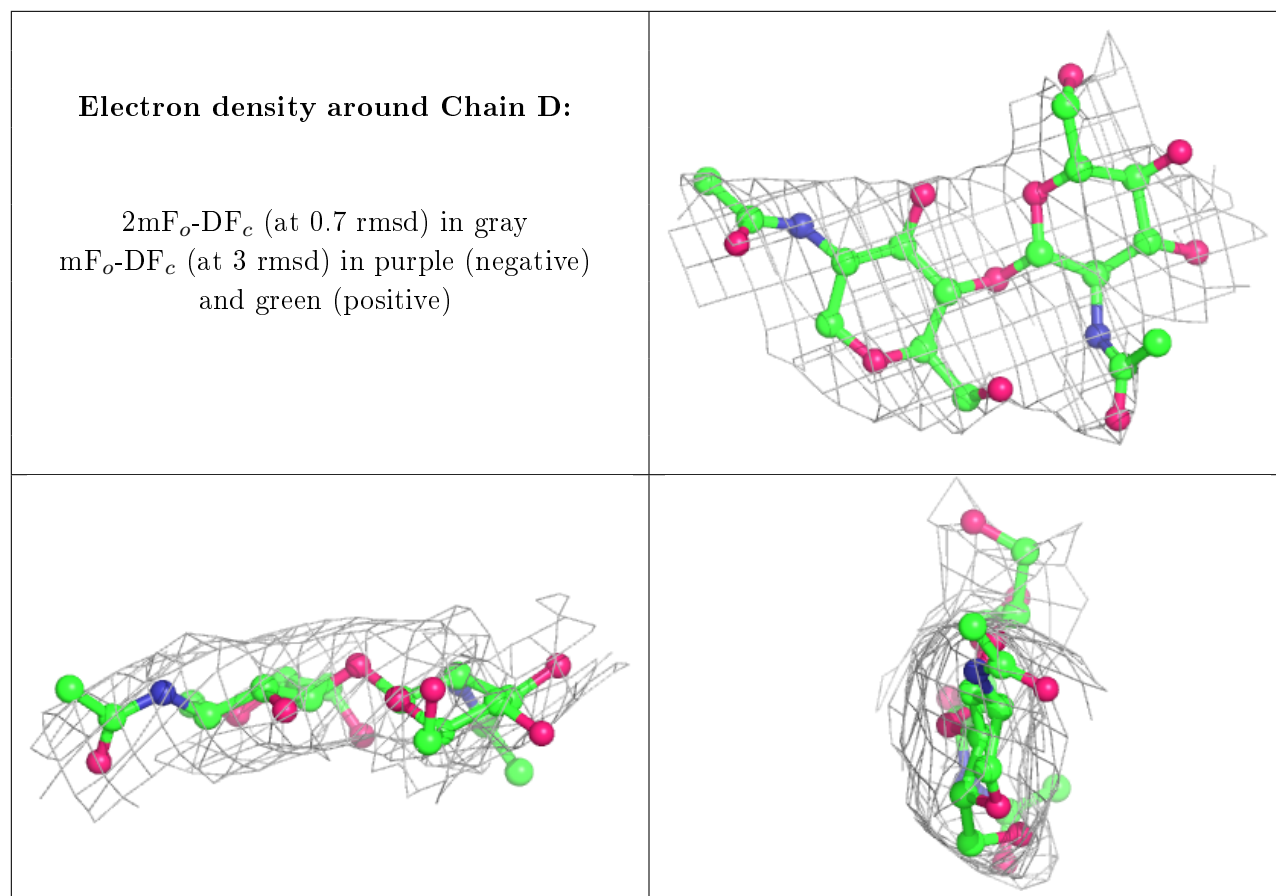
## 6.3 Carbohydrates [i](#)

In the following table, the Atoms column lists the number of modelled atoms in the group and the number defined in the chemical component dictionary. The B-factors column lists the minimum, median, 95<sup>th</sup> percentile and maximum values of B factors of atoms in the group. The column labelled 'Q< 0.9' lists the number of atoms with occupancy less than 0.9.

Mol	Type	Chain	Res	Atoms	RSCC	RSR	B-factors(Å <sup>2</sup> )	Q<0.9
3	FUC	C	5	10/11	0.80	0.32	116,122,125,125	0
3	NAG	C	2	14/15	0.84	0.17	80,91,99,103	0
3	MAN	C	4	11/12	0.85	0.32	78,93,104,106	0
3	BMA	C	3	11/12	0.87	0.24	85,93,104,105	0
4	NAG	D	2	14/15	0.88	0.21	107,117,124,128	0
3	NAG	C	1	14/15	0.90	0.30	84,92,107,114	0
4	NAG	D	1	14/15	0.95	0.15	78,90,99,100	0

The following is a graphical depiction of the model fit to experimental electron density for oligosaccharide. Each fit is shown from different orientation to approximate a three-dimensional view.





## 6.4 Ligands [i](#)

In the following table, the Atoms column lists the number of modelled atoms in the group and the number defined in the chemical component dictionary. The B-factors column lists the minimum, median, 95<sup>th</sup> percentile and maximum values of B factors of atoms in the group. The column labelled 'Q< 0.9' lists the number of atoms with occupancy less than 0.9.

Mol	Type	Chain	Res	Atoms	RSCC	RSR	B-factors( $\text{\AA}^2$ )	Q<0.9
5	NAG	A	501	14/15	0.77	0.21	116,127,131,132	0

## 6.5 Other polymers [i](#)

There are no such residues in this entry.