



## Full wwPDB EM Validation Report ⓘ

Dec 8, 2020 – 04:57 AM EST

PDB ID : 3IY1  
EMDB ID : EMD-5106  
Title : Variable domains of the WAM of Fab B fitted into the cryoEM reconstruction of the virus-Fab B complex  
Authors : Hafenstein, S.; Bowman, V.D.; Sun, T.; Nelson, C.D.; Palermo, L.M.; Battisti, A.J.; Parrish, C.R.; Rossmann, M.G.  
Deposited on : 2009-04-09  
Resolution : 18.00 Å(reported)

This is a Full wwPDB EM Validation Report for a publicly released PDB entry.

We welcome your comments at [validation@mail.wwpdb.org](mailto:validation@mail.wwpdb.org)

A user guide is available at

<https://www.wwpdb.org/validation/2017/EMValidationReportHelp>

with specific help available everywhere you see the ⓘ symbol.

---

The following versions of software and data (see [references ⓘ](#)) were used in the production of this report:

EMDB validation analysis : 0.0.0.dev61  
MolProbity : 4.02b-467  
Percentile statistics : 20191225.v01 (using entries in the PDB archive December 25th 2019)  
Ideal geometry (proteins) : Engh & Huber (2001)  
Ideal geometry (DNA, RNA) : Parkinson et al. (1996)  
Validation Pipeline (wwPDB-VP) : 2.15.1

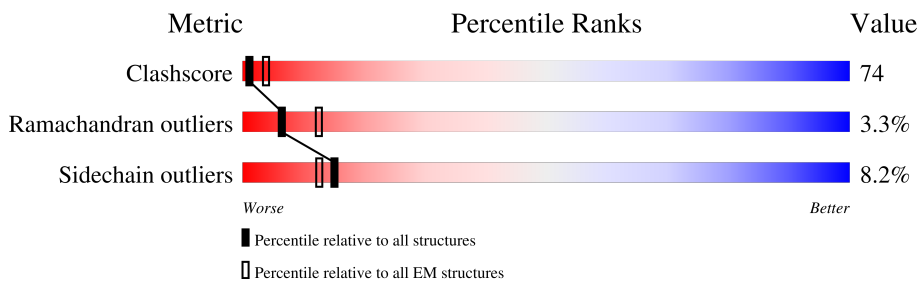
# 1 Overall quality at a glance

The following experimental techniques were used to determine the structure:

*ELECTRON MICROSCOPY*

The reported resolution of this entry is 18.00 Å.

Percentile scores (ranging between 0-100) for global validation metrics of the entry are shown in the following graphic. The table shows the number of entries on which the scores are based.



Metric	Whole archive (#Entries)	EM structures (#Entries)
Clashscore	158937	4297
Ramachandran outliers	154571	4023
Sidechain outliers	154315	3826

The table below summarises the geometric issues observed across the polymeric chains and their fit to the map. The red, orange, yellow and green segments of the bar indicate the fraction of residues that contain outliers for  $\geq 3$ , 2, 1 and 0 types of geometric quality criteria respectively. A grey segment represents the fraction of residues that are not modelled. The numeric value for each fraction is indicated below the corresponding segment, with a dot representing fractions  $\leq 5\%$ . The upper red bar (where present) indicates the fraction of residues that have poor fit to the EM map (all-atom inclusion  $< 40\%$ ). The numeric value is given above the bar.

Mol	Chain	Length	Quality of chain
1	A	107	
2	B	109	

## 2 Entry composition

There are 2 unique types of molecules in this entry. The entry contains 1648 atoms, of which 0 are hydrogens and 0 are deuteriums.

In the tables below, the AltConf column contains the number of residues with at least one atom in alternate conformation and the Trace column contains the number of residues modelled with at most 2 atoms.

- Molecule 1 is a protein called Fab B, light chain.

Mol	Chain	Residues	Atoms					AltConf	Trace
			Total	C	N	O	S		
1	A	107	819	517	137	162	3	0	0

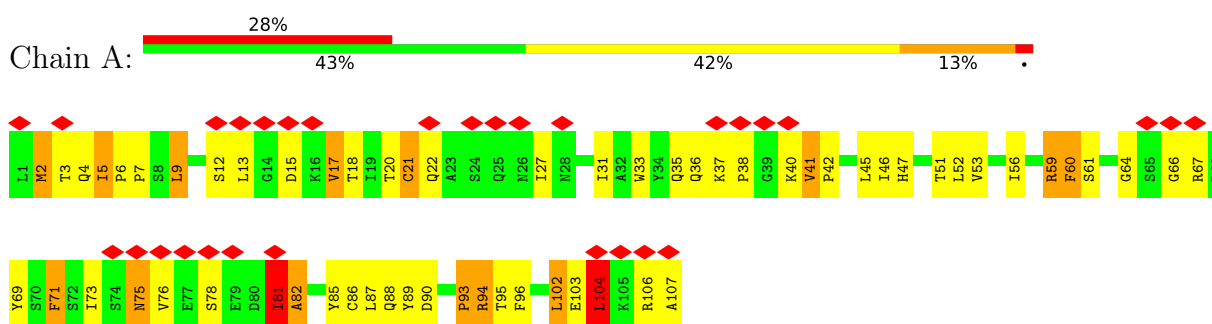
- Molecule 2 is a protein called Fab B, heavy chain.

Mol	Chain	Residues	Atoms					AltConf	Trace
			Total	C	N	O	S		
2	B	109	829	526	130	169	4	0	0

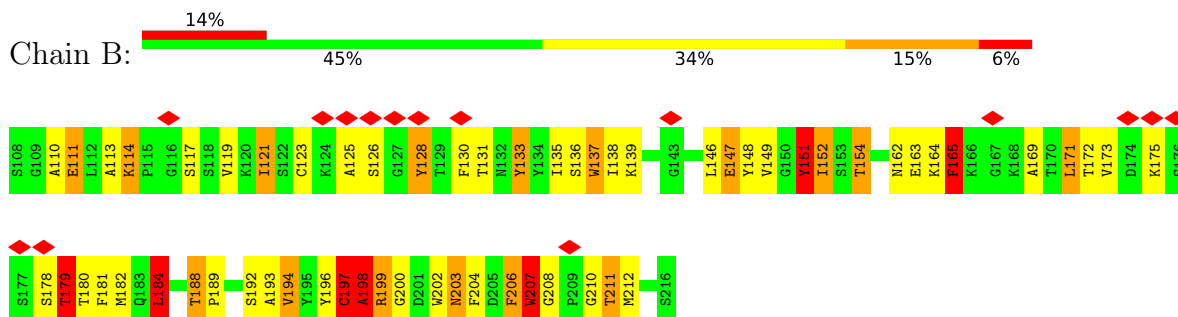
### 3 Residue-property plots

These plots are drawn for all protein, RNA, DNA and oligosaccharide chains in the entry. The first graphic for a chain summarises the proportions of the various outlier classes displayed in the second graphic. The second graphic shows the sequence view annotated by issues in geometry and atom inclusion in map density. Residues are color-coded according to the number of geometric quality criteria for which they contain at least one outlier: green = 0, yellow = 1, orange = 2 and red = 3 or more. A red diamond above a residue indicates a poor fit to the EM map for this residue (all-atom inclusion < 40%). Stretches of 2 or more consecutive residues without any outlier are shown as a green connector. Residues present in the sample, but not in the model, are shown in grey.

- Molecule 1: Fab B, light chain



- Molecule 2: Fab B, heavy chain



## 4 Experimental information

Property	Value	Source
EM reconstruction method	SINGLE PARTICLE	Depositor
Imposed symmetry	POINT, I	Depositor
Number of particles used	1126	Depositor
Resolution determination method	FSC 0.5 CUT-OFF	Depositor
CTF correction method	robem	Depositor
Microscope	FEI/PHILIPS CM300FEG/T	Depositor
Voltage (kV)	300	Depositor
Electron dose ( $e^-/\text{\AA}^2$ )	28.4	Depositor
Minimum defocus (nm)	1.7	Depositor
Maximum defocus (nm)	3.7	Depositor
Magnification	47190	Depositor
Image detector	KODAK SO-163 FILM	Depositor
Maximum map value	5.863	Depositor
Minimum map value	-3.566	Depositor
Average map value	0.000	Depositor
Map value standard deviation	1.000	Depositor
Recommended contour level	1.0	Depositor
Map size ( $\text{\AA}$ )	531.76, 531.76, 531.76	wwPDB
Map dimensions	184, 184, 184	wwPDB
Map angles ( $^\circ$ )	90.0, 90.0, 90.0	wwPDB
Pixel spacing ( $\text{\AA}$ )	2.89, 2.89, 2.89	Depositor

## 5 Model quality i

### 5.1 Standard geometry i

The Z score for a bond length (or angle) is the number of standard deviations the observed value is removed from the expected value. A bond length (or angle) with  $|Z| > 5$  is considered an outlier worth inspection. RMSZ is the root-mean-square of all Z scores of the bond lengths (or angles).

Mol	Chain	Bond lengths		Bond angles	
		RMSZ	# Z  >5	RMSZ	# Z  >5
1	A	1.04	2/837 (0.2%)	1.47	16/1132 (1.4%)
2	B	1.47	6/850 (0.7%)	2.52	48/1151 (4.2%)
All	All	1.28	8/1687 (0.5%)	2.07	64/2283 (2.8%)

Chiral center outliers are detected by calculating the chiral volume of a chiral center and verifying if the center is modelled as a planar moiety or with the opposite hand. A planarity outlier is detected by checking planarity of atoms in a peptide group, atoms in a mainchain group or atoms of a sidechain that are expected to be planar.

Mol	Chain	#Chirality outliers	#Planarity outliers
1	A	1	0
2	B	0	4
All	All	1	4

All (8) bond length outliers are listed below:

Mol	Chain	Res	Type	Atoms	Z	Observed(Å)	Ideal(Å)
2	B	207	TRP	CD2-CE2	-19.02	1.18	1.41
2	B	207	TRP	NE1-CE2	9.69	1.50	1.37
2	B	207	TRP	CZ3-CH2	-6.09	1.30	1.40
1	A	60	PHE	CG-CD2	-5.66	1.30	1.38
2	B	165	PHE	CE2-CZ	-5.47	1.26	1.37
2	B	165	PHE	CD2-CE2	-5.24	1.28	1.39
2	B	207	TRP	CG-CD1	-5.11	1.29	1.36
1	A	60	PHE	CG-CD1	-5.00	1.31	1.38

All (64) bond angle outliers are listed below:

Mol	Chain	Res	Type	Atoms	Z	Observed(°)	Ideal(°)
2	B	165	PHE	CD1-CE1-CZ	-30.00	84.10	120.10
2	B	165	PHE	CZ-CE2-CD2	-24.60	90.58	120.10
2	B	207	TRP	NE1-CE2-CZ2	-19.87	108.54	130.40
2	B	154	THR	CA-CB-CG2	17.62	137.06	112.40

*Continued on next page...*

*Continued from previous page...*

Mol	Chain	Res	Type	Atoms	Z	Observed(°)	Ideal(°)
2	B	207	TRP	CD2-CE2-CZ2	17.41	143.19	122.30
2	B	207	TRP	CE2-CD2-CG	14.84	119.17	107.30
2	B	207	TRP	CD1-NE1-CE2	-14.04	96.36	109.00
2	B	207	TRP	CH2-CZ2-CE2	-13.68	103.72	117.40
2	B	121	ILE	CA-CB-CG2	13.03	136.95	110.90
2	B	206	PHE	CB-CA-C	10.59	131.57	110.40
2	B	147	GLU	CG-CD-OE1	-10.11	98.09	118.30
2	B	121	ILE	CB-CA-C	10.07	131.75	111.60
1	A	93	PRO	N-CA-CB	-9.98	91.32	103.30
2	B	171	LEU	N-CA-CB	-9.98	90.44	110.40
1	A	17	VAL	CA-CB-CG2	-9.34	96.89	110.90
2	B	154	THR	CB-CA-C	9.31	136.74	111.60
2	B	165	PHE	CG-CD2-CE2	-9.28	110.59	120.80
1	A	60	PHE	CB-CG-CD2	9.15	127.21	120.80
1	A	60	PHE	CG-CD1-CE1	9.03	130.73	120.80
2	B	171	LEU	CB-CG-CD2	-8.85	95.95	111.00
2	B	151	TYR	CB-CA-C	-8.79	92.82	110.40
2	B	207	TRP	CD1-CG-CD2	-8.69	99.35	106.30
2	B	165	PHE	CB-CG-CD2	-8.26	115.02	120.80
2	B	207	TRP	CG-CD2-CE3	-8.07	126.64	133.90
2	B	147	GLU	CG-CD-OE2	7.81	133.93	118.30
1	A	104	LEU	N-CA-CB	-7.56	95.28	110.40
1	A	81	ILE	CB-CA-C	-7.55	96.50	111.60
2	B	207	TRP	CB-CG-CD2	7.46	136.30	126.60
2	B	197	CYS	O-C-N	-7.41	110.84	122.70
2	B	154	THR	N-CA-CB	-7.33	96.37	110.30
1	A	81	ILE	CA-CB-CG2	7.04	124.98	110.90
2	B	188	THR	CA-CB-CG2	7.04	122.25	112.40
2	B	165	PHE	CB-CG-CD1	-6.88	115.99	120.80
2	B	165	PHE	CG-CD1-CE1	-6.87	113.25	120.80
1	A	104	LEU	CA-CB-CG	-6.85	99.54	115.30
2	B	179	THR	CA-CB-CG2	-6.84	102.82	112.40
2	B	165	PHE	CD1-CG-CD2	6.79	127.12	118.30
2	B	207	TRP	CG-CD1-NE1	6.71	116.81	110.10
2	B	171	LEU	CB-CA-C	-6.64	97.58	110.20
2	B	206	PHE	N-CA-CB	-6.44	99.01	110.60
2	B	207	TRP	CE3-CZ3-CH2	6.44	128.28	121.20
2	B	165	PHE	CE1-CZ-CE2	6.16	131.09	120.00
1	A	81	ILE	CA-CB-CG1	6.16	122.69	111.00
2	B	206	PHE	CA-C-N	6.04	130.49	117.20
2	B	199	ARG	N-CA-C	-6.02	94.75	111.00
1	A	71	PHE	CE1-CZ-CE2	5.99	130.77	120.00

*Continued on next page...*

Continued from previous page...

Mol	Chain	Res	Type	Atoms	Z	Observed(°)	Ideal(°)
2	B	137	TRP	CD1-NE1-CE2	-5.77	103.80	109.00
2	B	121	ILE	N-CA-CB	-5.66	97.78	110.80
2	B	126	SER	CA-C-N	-5.55	105.11	116.20
2	B	206	PHE	N-CA-C	-5.46	96.25	111.00
2	B	126	SER	O-C-N	5.39	132.36	123.20
2	B	202	TRP	CD1-NE1-CE2	-5.38	104.16	109.00
1	A	9	LEU	CB-CG-CD2	-5.37	101.86	111.00
2	B	128	TYR	CB-CG-CD1	-5.35	117.79	121.00
1	A	59	ARG	NE-CZ-NH1	5.33	122.96	120.30
2	B	152	ILE	CB-CA-C	-5.32	100.97	111.60
2	B	152	ILE	CA-CB-CG2	5.30	121.50	110.90
2	B	206	PHE	O-C-N	-5.28	114.25	122.70
2	B	184	LEU	CB-CG-CD1	5.27	119.96	111.00
1	A	21	CYS	CA-CB-SG	-5.22	104.60	114.00
1	A	94	ARG	NE-CZ-NH1	5.20	122.90	120.30
1	A	17	VAL	CA-CB-CG1	5.15	118.62	110.90
1	A	94	ARG	N-CA-CB	-5.09	101.43	110.60
2	B	207	TRP	CD2-CE3-CZ3	-5.06	112.22	118.80

All (1) chirality outliers are listed below:

Mol	Chain	Res	Type	Atom
1	A	81	ILE	CB

All (4) planarity outliers are listed below:

Mol	Chain	Res	Type	Group
2	B	133	TYR	Sidechain
2	B	165	PHE	Sidechain
2	B	197	CYS	Mainchain
2	B	198	ALA	Mainchain

## 5.2 Too-close contacts [\(i\)](#)

In the following table, the Non-H and H(model) columns list the number of non-hydrogen atoms and hydrogen atoms in the chain respectively. The H(added) column lists the number of hydrogen atoms added and optimized by MolProbity. The Clashes column lists the number of clashes within the asymmetric unit, whereas Symm-Clashes lists symmetry-related clashes.

Mol	Chain	Non-H	H(model)	H(added)	Clashes	Symm-Clashes
1	A	819	0	812	87	0

Continued on next page...



*Continued from previous page...*

Mol	Chain	Non-H	H(model)	H(added)	Clashes	Symm-Clashes
2	B	829	0	786	160	0
All	All	1648	0	1598	237	0

The all-atom clashscore is defined as the number of clashes found per 1000 atoms (including hydrogen atoms). The all-atom clashscore for this structure is 74.

All (237) close contacts within the same asymmetric unit are listed below, sorted by their clash magnitude.

Atom-1	Atom-2	Interatomic distance (Å)	Clash overlap (Å)
2:B:198:ALA:HB1	2:B:204:PHE:HB3	1.28	1.16
1:A:9:LEU:HD21	1:A:17:VAL:HG21	1.35	1.07
1:A:9:LEU:HD21	1:A:17:VAL:CG2	1.86	1.04
2:B:206:PHE:CB	2:B:207:TRP:HB3	1.91	1.01
1:A:60:PHE:HD1	1:A:71:PHE:CZ	1.77	1.01
1:A:60:PHE:CD1	1:A:71:PHE:HZ	1.79	1.00
1:A:87:LEU:HD21	1:A:94:ARG:HG2	1.44	0.98
2:B:154:THR:HG23	2:B:173:VAL:CB	1.94	0.98
1:A:60:PHE:HD1	1:A:71:PHE:HZ	1.04	0.96
2:B:179:THR:HG21	2:B:181:PHE:CZ	2.01	0.96
2:B:123:CYS:HB3	2:B:180:THR:CG2	1.98	0.94
2:B:154:THR:CB	2:B:173:VAL:HG21	1.97	0.94
2:B:206:PHE:HB3	2:B:207:TRP:HB3	1.46	0.94
2:B:154:THR:HG23	2:B:173:VAL:HB	1.50	0.92
2:B:152:ILE:HB	2:B:171:LEU:CD2	2.02	0.89
2:B:154:THR:HA	2:B:173:VAL:HG21	1.54	0.89
2:B:123:CYS:HB3	2:B:180:THR:HG23	1.54	0.88
2:B:164:LYS:HG2	2:B:165:PHE:HZ	1.36	0.87
2:B:182:MET:HG3	2:B:184:LEU:HD11	1.55	0.87
2:B:154:THR:HB	2:B:175:LYS:HZ3	1.40	0.86
2:B:188:THR:HG23	2:B:189:PRO:HD2	1.55	0.86
1:A:93:PRO:HB2	2:B:148:TYR:CE2	2.10	0.86
1:A:41:VAL:HG13	2:B:196:TYR:CE1	2.12	0.85
2:B:114:LYS:HE2	2:B:117:SER:HB3	1.57	0.84
2:B:198:ALA:HA	2:B:207:TRP:CD1	2.13	0.84
2:B:182:MET:HG3	2:B:184:LEU:CD1	2.06	0.84
1:A:9:LEU:CD2	1:A:17:VAL:HG21	2.07	0.84
1:A:93:PRO:HB2	2:B:148:TYR:CD2	2.13	0.84
2:B:179:THR:HG21	2:B:181:PHE:CE2	2.13	0.84
2:B:149:VAL:HG12	2:B:182:MET:HE1	1.60	0.83
2:B:119:VAL:HG12	2:B:184:LEU:HB2	1.61	0.83
2:B:119:VAL:CG1	2:B:184:LEU:HD22	2.08	0.83

*Continued on next page...*

*Continued from previous page...*

Atom-1	Atom-2	Interatomic distance (Å)	Clash overlap (Å)
2:B:188:THR:CG2	2:B:189:PRO:HD2	2.07	0.83
1:A:89:TYR:HB2	1:A:94:ARG:HH12	1.44	0.81
1:A:5:ILE:HD12	1:A:6:PRO:HA	1.63	0.80
1:A:87:LEU:HD11	1:A:94:ARG:HD3	1.63	0.80
1:A:36:GLN:O	1:A:82:ALA:HB1	1.82	0.80
1:A:87:LEU:HD11	1:A:94:ARG:CG	2.12	0.79
2:B:121:ILE:HD12	2:B:184:LEU:HD22	1.65	0.79
2:B:154:THR:HG23	2:B:173:VAL:CG2	2.12	0.79
2:B:154:THR:HG22	2:B:175:LYS:HD3	1.63	0.79
2:B:198:ALA:CB	2:B:204:PHE:HB3	2.10	0.79
1:A:53:VAL:O	1:A:56:ILE:HG22	1.81	0.78
2:B:121:ILE:HD12	2:B:184:LEU:CD2	2.14	0.78
2:B:154:THR:HB	2:B:175:LYS:HE2	1.66	0.77
2:B:198:ALA:C	2:B:207:TRP:HE1	1.88	0.77
2:B:169:ALA:HB1	2:B:182:MET:HE3	1.65	0.76
2:B:137:TRP:HD1	2:B:171:LEU:CD1	1.99	0.76
2:B:154:THR:CA	2:B:173:VAL:HG21	2.16	0.76
2:B:164:LYS:HE2	2:B:165:PHE:CZ	2.20	0.75
1:A:37:LYS:HB2	1:A:40:LYS:HE2	1.68	0.74
1:A:87:LEU:HD11	1:A:94:ARG:CD	2.17	0.74
1:A:96:PHE:CE2	2:B:138:ILE:HD12	2.21	0.74
2:B:154:THR:HB	2:B:175:LYS:CE	2.19	0.72
2:B:154:THR:HB	2:B:175:LYS:NZ	2.04	0.72
2:B:154:THR:CG2	2:B:173:VAL:HG21	2.20	0.72
2:B:110:ALA:O	2:B:111:GLU:HG2	1.89	0.71
1:A:87:LEU:HD11	1:A:94:ARG:HG3	1.72	0.71
2:B:114:LYS:HE2	2:B:117:SER:CB	2.21	0.70
1:A:37:LYS:HA	1:A:82:ALA:CB	2.22	0.70
1:A:87:LEU:HD23	1:A:96:PHE:CG	2.26	0.69
2:B:136:SER:HB3	2:B:204:PHE:CZ	2.27	0.69
2:B:169:ALA:HB1	2:B:182:MET:CE	2.23	0.69
1:A:9:LEU:HD21	1:A:17:VAL:HG22	1.74	0.69
2:B:152:ILE:CD1	2:B:172:THR:HA	2.22	0.69
2:B:154:THR:HA	2:B:173:VAL:CG2	2.24	0.68
2:B:113:ALA:HB1	2:B:117:SER:OG	1.93	0.67
2:B:164:LYS:HG2	2:B:165:PHE:CZ	2.23	0.67
1:A:87:LEU:HD11	1:A:94:ARG:HH11	1.60	0.67
1:A:22:GLN:HA	1:A:67:ARG:O	1.94	0.66
2:B:149:VAL:CG1	2:B:182:MET:HE1	2.23	0.66
1:A:2:MET:HG2	1:A:86:CYS:SG	2.35	0.66
2:B:123:CYS:CB	2:B:180:THR:CG2	2.72	0.66

*Continued on next page...*

*Continued from previous page...*

Atom-1	Atom-2	Interatomic distance (Å)	Clash overlap (Å)
2:B:136:SER:HB3	2:B:204:PHE:CE1	2.30	0.66
1:A:60:PHE:CD1	1:A:71:PHE:CZ	2.64	0.65
2:B:152:ILE:HB	2:B:171:LEU:HD21	1.77	0.65
2:B:128:TYR:CE1	2:B:130:PHE:HA	2.32	0.64
1:A:13:LEU:CD2	1:A:104:LEU:HD21	2.26	0.64
1:A:27:ILE:HB	1:A:90:ASP:HB2	1.79	0.64
2:B:152:ILE:HB	2:B:171:LEU:HD23	1.80	0.64
2:B:198:ALA:CA	2:B:207:TRP:NE1	2.60	0.64
1:A:85:TYR:CD1	2:B:146:LEU:HD12	2.33	0.64
1:A:37:LYS:HA	1:A:82:ALA:HB2	1.80	0.64
1:A:41:VAL:HG11	2:B:208:GLY:O	1.98	0.63
2:B:128:TYR:CE1	2:B:199:ARG:HD2	2.33	0.63
2:B:154:THR:HG22	2:B:175:LYS:CD	2.29	0.62
2:B:182:MET:CG	2:B:184:LEU:HD11	2.29	0.62
1:A:17:VAL:HG22	1:A:18:THR:N	2.14	0.62
2:B:206:PHE:CA	2:B:207:TRP:HB3	2.30	0.62
2:B:123:CYS:HG	2:B:197:CYS:CB	2.13	0.62
2:B:130:PHE:CE1	2:B:135:ILE:HD11	2.35	0.62
2:B:154:THR:HG23	2:B:173:VAL:HG21	1.75	0.61
1:A:13:LEU:HD21	1:A:104:LEU:HD21	1.80	0.61
2:B:199:ARG:O	2:B:204:PHE:HA	2.01	0.61
2:B:130:PHE:CE2	2:B:175:LYS:HA	2.35	0.61
1:A:27:ILE:HA	1:A:90:ASP:OD2	2.01	0.60
1:A:106:ARG:HG2	1:A:107:ALA:N	2.17	0.60
1:A:87:LEU:CD1	1:A:94:ARG:HH11	2.13	0.60
2:B:138:ILE:HG23	2:B:196:TYR:HB2	1.82	0.59
2:B:114:LYS:HD3	2:B:114:LYS:H	1.67	0.59
2:B:152:ILE:N	2:B:171:LEU:HD21	2.18	0.59
2:B:139:LYS:CE	2:B:164:LYS:HZ3	2.14	0.59
1:A:12:SER:O	1:A:15:ASP:HB2	2.03	0.58
2:B:139:LYS:CE	2:B:164:LYS:NZ	2.66	0.58
2:B:154:THR:CB	2:B:175:LYS:HZ3	2.14	0.58
2:B:198:ALA:HA	2:B:207:TRP:NE1	2.18	0.58
2:B:154:THR:HG22	2:B:175:LYS:CE	2.33	0.57
1:A:45:LEU:CA	1:A:56:ILE:HD12	2.34	0.57
2:B:123:CYS:CB	2:B:197:CYS:HG	2.17	0.57
1:A:45:LEU:HB3	1:A:56:ILE:HD12	1.86	0.57
1:A:5:ILE:HD12	1:A:6:PRO:CA	2.33	0.57
1:A:87:LEU:CD1	1:A:94:ARG:HD3	2.34	0.56
1:A:41:VAL:HG12	1:A:42:PRO:HD2	1.86	0.56
2:B:182:MET:HG3	2:B:184:LEU:HD12	1.86	0.56

*Continued on next page...*

*Continued from previous page...*

Atom-1	Atom-2	Interatomic distance (Å)	Clash overlap (Å)
2:B:137:TRP:HD1	2:B:171:LEU:HD12	1.70	0.56
1:A:89:TYR:HB2	1:A:94:ARG:NH1	2.19	0.56
1:A:96:PHE:CZ	2:B:138:ILE:HD12	2.40	0.56
2:B:162:ASN:OD1	2:B:164:LYS:HB3	2.05	0.56
1:A:87:LEU:C	1:A:87:LEU:HD13	2.25	0.55
2:B:139:LYS:HE2	2:B:164:LYS:HZ3	1.72	0.55
2:B:123:CYS:SG	2:B:180:THR:CG2	2.95	0.55
2:B:194:VAL:HG11	2:B:196:TYR:CZ	2.41	0.55
2:B:154:THR:CB	2:B:175:LYS:HE2	2.34	0.55
1:A:87:LEU:HD22	1:A:95:THR:O	2.06	0.54
1:A:45:LEU:HA	1:A:56:ILE:HD12	1.89	0.54
2:B:137:TRP:CD1	2:B:171:LEU:HD12	2.43	0.54
2:B:123:CYS:HB3	2:B:180:THR:HG22	1.87	0.54
1:A:45:LEU:HB3	1:A:56:ILE:CD1	2.38	0.54
2:B:198:ALA:CA	2:B:207:TRP:HE1	2.19	0.54
1:A:87:LEU:HD23	1:A:96:PHE:CD2	2.42	0.54
2:B:119:VAL:HG11	2:B:184:LEU:HD22	1.89	0.54
2:B:154:THR:CA	2:B:175:LYS:HE2	2.39	0.53
2:B:114:LYS:CD	2:B:114:LYS:H	2.22	0.53
2:B:135:ILE:HD13	2:B:180:THR:HB	1.90	0.53
2:B:130:PHE:CD2	2:B:175:LYS:HA	2.43	0.53
1:A:93:PRO:CB	2:B:148:TYR:CE2	2.88	0.53
2:B:121:ILE:HD12	2:B:184:LEU:HD21	1.89	0.53
2:B:130:PHE:CE2	2:B:178:SER:HA	2.43	0.53
2:B:133:TYR:HB3	2:B:199:ARG:HG2	1.91	0.53
2:B:137:TRP:CD1	2:B:171:LEU:CD1	2.86	0.53
2:B:125:ALA:HA	2:B:207:TRP:CZ3	2.44	0.53
1:A:9:LEU:CG	1:A:17:VAL:HG21	2.39	0.53
2:B:211:THR:O	2:B:211:THR:HG23	2.09	0.53
2:B:130:PHE:HE1	2:B:135:ILE:HD11	1.74	0.53
1:A:71:PHE:HE2	1:A:73:ILE:HD11	1.73	0.52
2:B:154:THR:CG2	2:B:175:LYS:HZ3	2.21	0.52
2:B:198:ALA:C	2:B:207:TRP:NE1	2.59	0.52
2:B:137:TRP:HD1	2:B:171:LEU:HD11	1.73	0.52
1:A:45:LEU:CB	1:A:56:ILE:HD12	2.39	0.52
2:B:169:ALA:CB	2:B:182:MET:HE3	2.37	0.52
1:A:60:PHE:CE1	1:A:71:PHE:HZ	2.24	0.52
2:B:123:CYS:CB	2:B:180:THR:HG22	2.39	0.52
1:A:38:PRO:HD3	1:A:82:ALA:HB2	1.90	0.51
2:B:164:LYS:HD3	2:B:165:PHE:CE1	2.46	0.51
2:B:154:THR:CG2	2:B:175:LYS:NZ	2.74	0.51

*Continued on next page...*

*Continued from previous page...*

Atom-1	Atom-2	Interatomic distance (Å)	Clash overlap (Å)
1:A:96:PHE:CE2	2:B:138:ILE:CD1	2.94	0.51
2:B:110:ALA:HB1	2:B:212:MET:O	2.10	0.51
1:A:3:THR:HB	1:A:22:GLN:HG2	1.92	0.50
2:B:152:ILE:HD13	2:B:172:THR:HA	1.93	0.50
2:B:154:THR:HG23	2:B:173:VAL:CG1	2.42	0.49
2:B:192:SER:O	2:B:193:ALA:HB2	2.11	0.49
2:B:154:THR:HG22	2:B:175:LYS:NZ	2.27	0.49
1:A:17:VAL:HG22	1:A:18:THR:H	1.75	0.49
2:B:154:THR:OG1	2:B:173:VAL:HG11	2.12	0.49
2:B:179:THR:CG2	2:B:181:PHE:CE2	2.90	0.49
1:A:81:ILE:O	1:A:82:ALA:HB2	2.13	0.49
2:B:199:ARG:N	2:B:207:TRP:NE1	2.61	0.48
1:A:59:ARG:HD3	1:A:75:ASN:O	2.13	0.48
1:A:33:TRP:CZ3	1:A:86:CYS:HB3	2.49	0.48
2:B:125:ALA:HB2	2:B:207:TRP:CH2	2.49	0.48
2:B:151:TYR:C	2:B:171:LEU:HD21	2.34	0.47
2:B:131:THR:HA	2:B:175:LYS:HZ1	1.79	0.47
1:A:85:TYR:CE1	2:B:146:LEU:HD12	2.49	0.47
2:B:154:THR:C	2:B:175:LYS:HE2	2.35	0.47
1:A:102:LEU:HD12	1:A:103:GLU:N	2.29	0.47
2:B:125:ALA:HA	2:B:207:TRP:HZ3	1.80	0.47
2:B:163:GLU:HA	2:B:163:GLU:OE1	2.14	0.47
2:B:164:LYS:CE	2:B:165:PHE:CZ	2.96	0.47
2:B:130:PHE:HE2	2:B:175:LYS:HA	1.80	0.47
2:B:179:THR:HG22	2:B:179:THR:O	2.12	0.47
1:A:106:ARG:HG2	1:A:107:ALA:H	1.80	0.46
2:B:194:VAL:HG23	2:B:212:MET:SD	2.55	0.46
2:B:173:VAL:HG12	2:B:180:THR:HA	1.98	0.46
2:B:136:SER:O	2:B:197:CYS:HA	2.15	0.46
1:A:78:SER:HA	1:A:104:LEU:HD11	1.97	0.46
1:A:87:LEU:CD2	1:A:94:ARG:HG2	2.32	0.46
1:A:2:MET:HE1	1:A:31:ILE:HD12	1.98	0.46
1:A:46:ILE:CD1	1:A:52:LEU:HD23	2.45	0.46
2:B:135:ILE:HG21	2:B:180:THR:HG21	1.98	0.46
1:A:64:GLY:HA3	1:A:69:TYR:HA	1.96	0.46
2:B:152:ILE:HG21	2:B:173:VAL:HG13	1.96	0.46
2:B:147:GLU:CD	2:B:164:LYS:HZ2	2.18	0.46
2:B:123:CYS:SG	2:B:180:THR:HG21	2.56	0.45
1:A:45:LEU:O	1:A:53:VAL:HG12	2.17	0.45
2:B:128:TYR:CD1	2:B:199:ARG:HD2	2.51	0.45
2:B:199:ARG:N	2:B:207:TRP:HE1	2.13	0.45

*Continued on next page...*

*Continued from previous page...*

Atom-1	Atom-2	Interatomic distance (Å)	Clash overlap (Å)
2:B:135:ILE:CD1	2:B:180:THR:HB	2.47	0.45
1:A:35:GLN:HB2	1:A:45:LEU:HD11	1.99	0.45
1:A:87:LEU:HD23	1:A:96:PHE:CD1	2.51	0.45
1:A:81:ILE:O	1:A:82:ALA:CB	2.64	0.45
2:B:198:ALA:HB1	2:B:204:PHE:CB	2.20	0.45
2:B:206:PHE:HB2	2:B:207:TRP:HB3	1.91	0.45
1:A:87:LEU:HD22	1:A:95:THR:C	2.38	0.44
1:A:15:ASP:O	1:A:76:VAL:HG23	2.16	0.44
2:B:121:ILE:HB	2:B:182:MET:HB3	2.00	0.44
2:B:200:GLY:HA2	2:B:203:ASN:O	2.17	0.44
1:A:52:LEU:HD22	1:A:56:ILE:CG2	2.48	0.44
2:B:110:ALA:C	2:B:111:GLU:HG2	2.39	0.44
2:B:137:TRP:CD1	2:B:171:LEU:HD11	2.53	0.44
2:B:119:VAL:HG13	2:B:184:LEU:HD22	1.97	0.44
2:B:138:ILE:HD11	2:B:146:LEU:HD22	1.99	0.43
2:B:184:LEU:CD1	2:B:184:LEU:N	2.81	0.43
2:B:139:LYS:NZ	2:B:165:PHE:CE2	2.82	0.43
1:A:52:LEU:HD22	1:A:56:ILE:HG23	2.00	0.43
1:A:59:ARG:O	1:A:73:ILE:HA	2.19	0.43
2:B:198:ALA:HB3	2:B:204:PHE:CG	2.54	0.43
1:A:46:ILE:HD11	1:A:52:LEU:HD23	2.01	0.43
2:B:110:ALA:O	2:B:111:GLU:CG	2.62	0.43
2:B:152:ILE:HD13	2:B:172:THR:CA	2.48	0.43
2:B:188:THR:CG2	2:B:189:PRO:CD	2.87	0.43
2:B:194:VAL:CG1	2:B:196:TYR:CE2	3.01	0.43
1:A:4:GLN:HG3	1:A:21:CYS:SG	2.59	0.42
1:A:20:THR:HG23	1:A:69:TYR:O	2.20	0.42
1:A:87:LEU:HD21	1:A:94:ARG:CG	2.32	0.42
2:B:198:ALA:CB	2:B:204:PHE:CB	2.91	0.42
1:A:41:VAL:HG12	1:A:42:PRO:CD	2.49	0.42
1:A:87:LEU:HD13	1:A:88:GLN:N	2.35	0.42
2:B:121:ILE:CD1	2:B:184:LEU:CD2	2.93	0.41
2:B:123:CYS:SG	2:B:197:CYS:CB	3.06	0.41
2:B:164:LYS:CG	2:B:165:PHE:CZ	3.00	0.41
2:B:164:LYS:CD	2:B:165:PHE:CE1	3.03	0.41
1:A:46:ILE:HD11	1:A:52:LEU:CD2	2.50	0.40
2:B:133:TYR:CB	2:B:199:ARG:HG2	2.51	0.40
1:A:47:HIS:O	1:A:51:THR:HB	2.22	0.40
2:B:194:VAL:CG1	2:B:196:TYR:CZ	3.04	0.40
2:B:210:GLY:O	2:B:211:THR:HB	2.21	0.40
2:B:152:ILE:CB	2:B:171:LEU:HD21	2.49	0.40

There are no symmetry-related clashes.

## 5.3 Torsion angles [i](#)

### 5.3.1 Protein backbone [i](#)

In the following table, the Percentiles column shows the percent Ramachandran outliers of the chain as a percentile score with respect to all PDB entries followed by that with respect to all EM entries.

The Analysed column shows the number of residues for which the backbone conformation was analysed, and the total number of residues.

Mol	Chain	Analysed	Favoured	Allowed	Outliers	Percentiles	
1	A	105/107 (98%)	98 (93%)	4 (4%)	3 (3%)	4	29
2	B	107/109 (98%)	92 (86%)	11 (10%)	4 (4%)	3	24
All	All	212/216 (98%)	190 (90%)	15 (7%)	7 (3%)	6	26

All (7) Ramachandran outliers are listed below:

Mol	Chain	Res	Type
1	A	82	ALA
2	B	111	GLU
2	B	207	TRP
2	B	211	THR
2	B	198	ALA
1	A	66	GLY
1	A	7	PRO

### 5.3.2 Protein sidechains [i](#)

In the following table, the Percentiles column shows the percent sidechain outliers of the chain as a percentile score with respect to all PDB entries followed by that with respect to all EM entries.

The Analysed column shows the number of residues for which the sidechain conformation was analysed, and the total number of residues.

Mol	Chain	Analysed	Rotameric	Outliers	Percentiles	
1	A	92/92 (100%)	84 (91%)	8 (9%)	10	31
2	B	90/90 (100%)	83 (92%)	7 (8%)	12	36
All	All	182/182 (100%)	167 (92%)	15 (8%)	15	34

All (15) residues with a non-rotameric sidechain are listed below:

Mol	Chain	Res	Type
1	A	2	MET
1	A	5	ILE
1	A	41	VAL
1	A	61	SER
1	A	75	ASN
1	A	81	ILE
1	A	102	LEU
1	A	104	LEU
2	B	114	LYS
2	B	151	TYR
2	B	179	THR
2	B	184	LEU
2	B	194	VAL
2	B	197	CYS
2	B	203	ASN

Sometimes sidechains can be flipped to improve hydrogen bonding and reduce clashes. All (2) such sidechains are listed below:

Mol	Chain	Res	Type
1	A	75	ASN
2	B	144	GLN

### 5.3.3 RNA [i](#)

There are no RNA molecules in this entry.

### 5.4 Non-standard residues in protein, DNA, RNA chains [i](#)

There are no non-standard protein/DNA/RNA residues in this entry.

### 5.5 Carbohydrates [i](#)

There are no monosaccharides in this entry.

### 5.6 Ligand geometry [i](#)

There are no ligands in this entry.



## 5.7 Other polymers

There are no such residues in this entry.

## 5.8 Polymer linkage issues

There are no chain breaks in this entry.

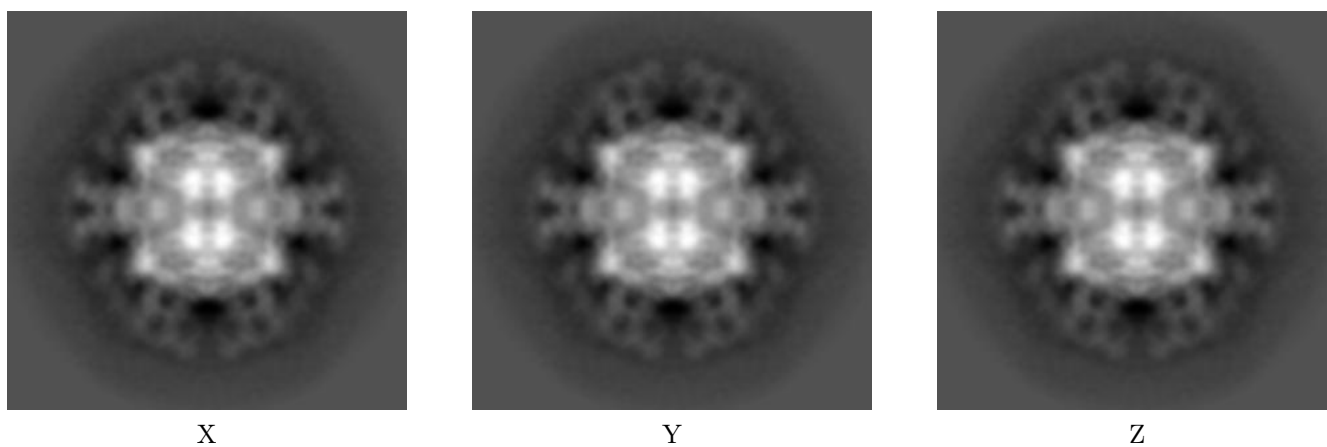
## 6 Map visualisation [i](#)

This section contains visualisations of the EMDB entry EMD-5106. These allow visual inspection of the internal detail of the map and identification of artifacts.

No raw map or half-maps were deposited for this entry and therefore no images, graphs, etc. pertaining to the raw map can be shown.

### 6.1 Orthogonal projections [i](#)

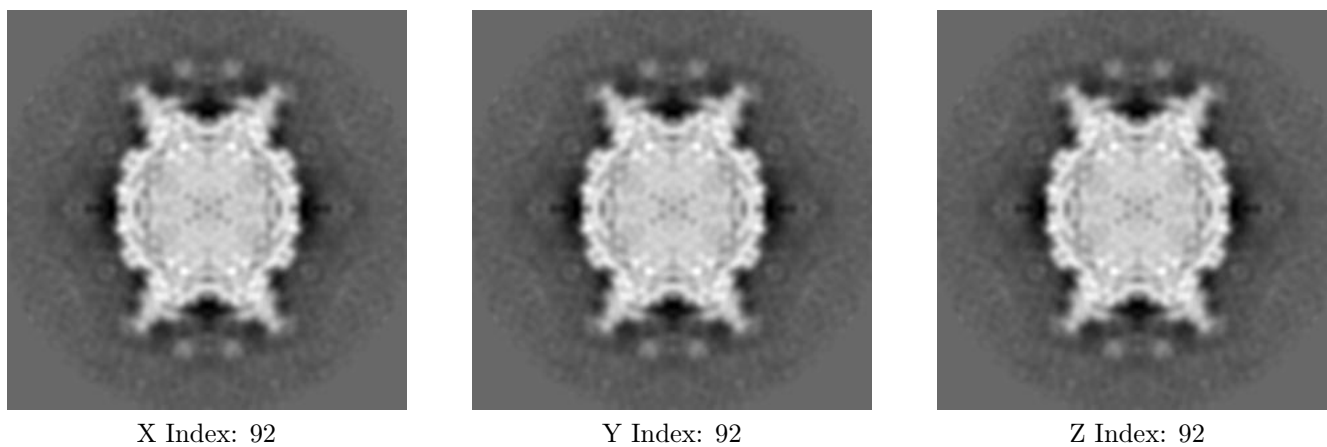
#### 6.1.1 Primary map



The images above show the map projected in three orthogonal directions.

### 6.2 Central slices [i](#)

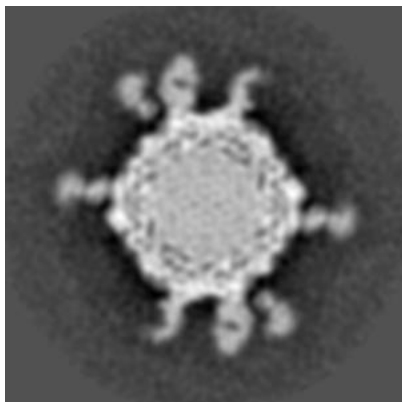
#### 6.2.1 Primary map



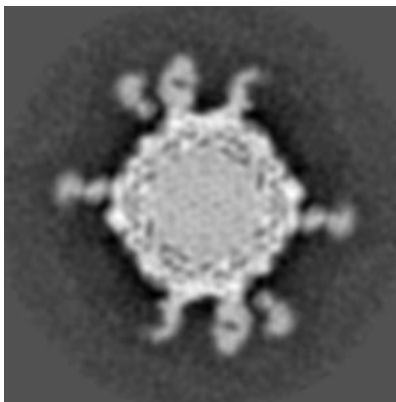
The images above show central slices of the map in three orthogonal directions.

## 6.3 Largest variance slices [i](#)

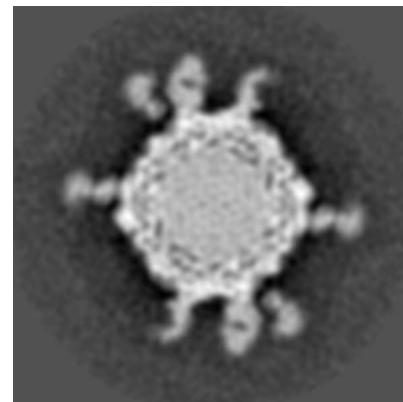
### 6.3.1 Primary map



X Index: 84



Y Index: 84

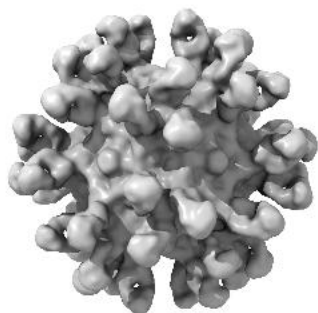


Z Index: 84

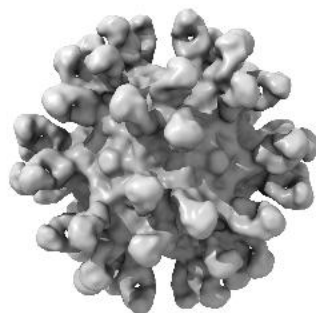
The images above show the largest variance slices of the map in three orthogonal directions.

## 6.4 Orthogonal surface views [i](#)

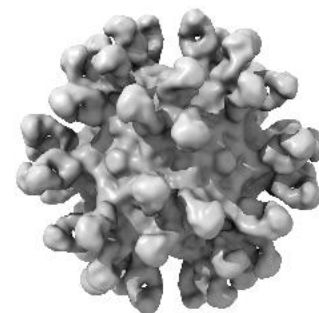
### 6.4.1 Primary map



X



Y



Z

The images above show the 3D surface view of the map at the recommended contour level 1.0. These images, in conjunction with the slice images, may facilitate assessment of whether an appropriate contour level has been provided.

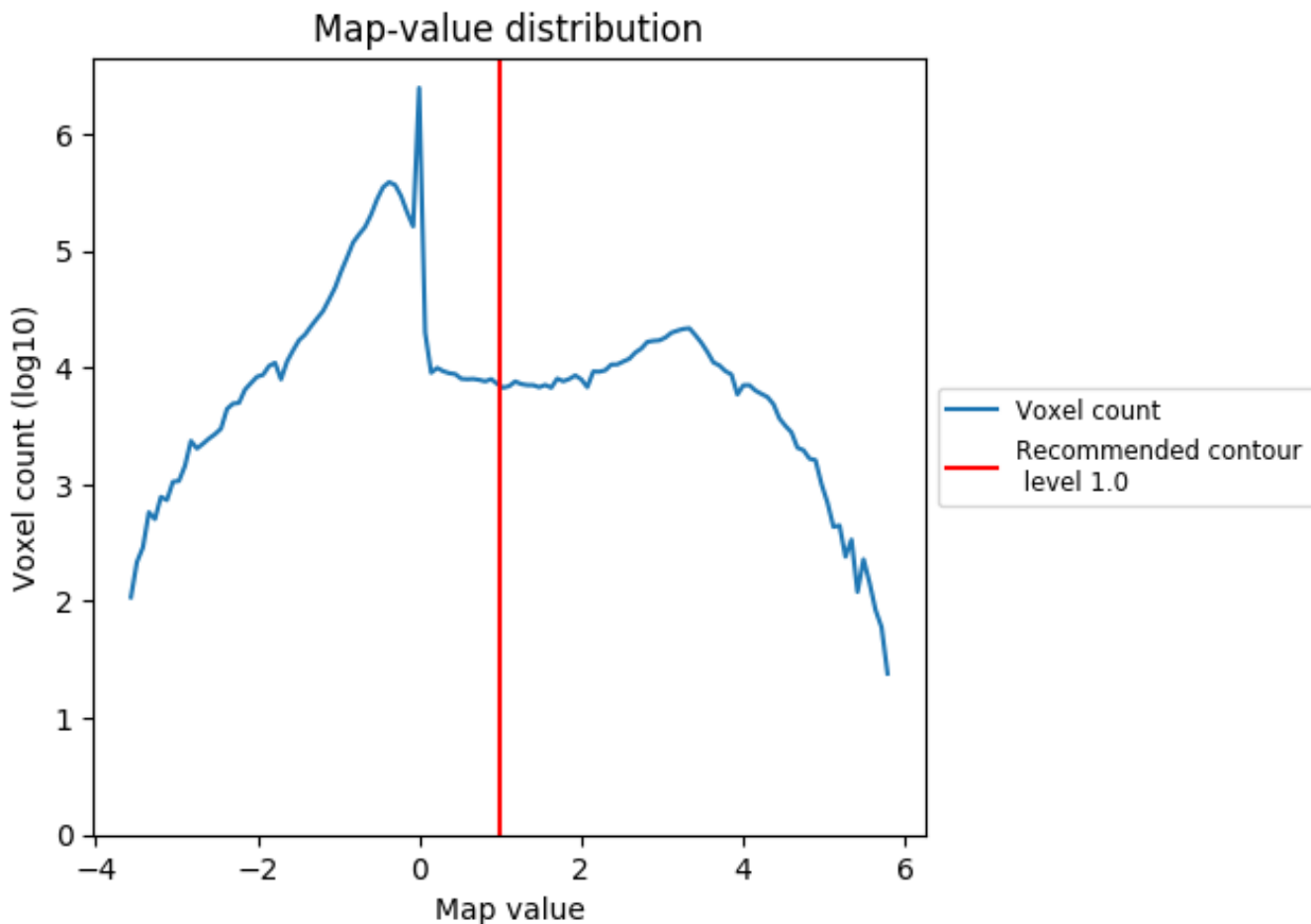
## 6.5 Mask visualisation

This section was not generated. No masks/segmentation were deposited.

## 7 Map analysis [i](#)

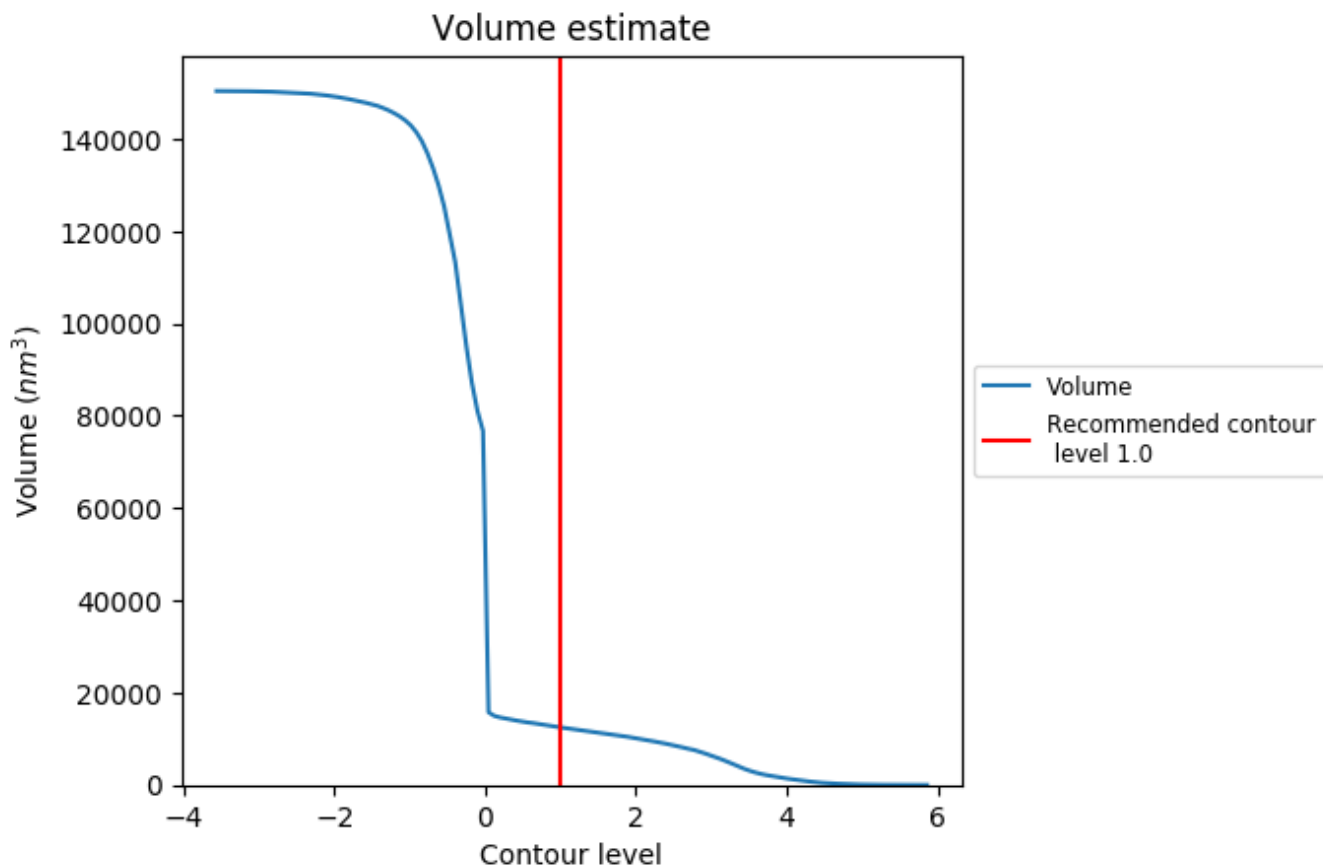
This section contains the results of statistical analysis of the map.

### 7.1 Map-value distribution [i](#)



The map-value distribution is plotted in 128 intervals along the x-axis. The y-axis is logarithmic. A spike in this graph at zero usually indicates that the volume has been masked.

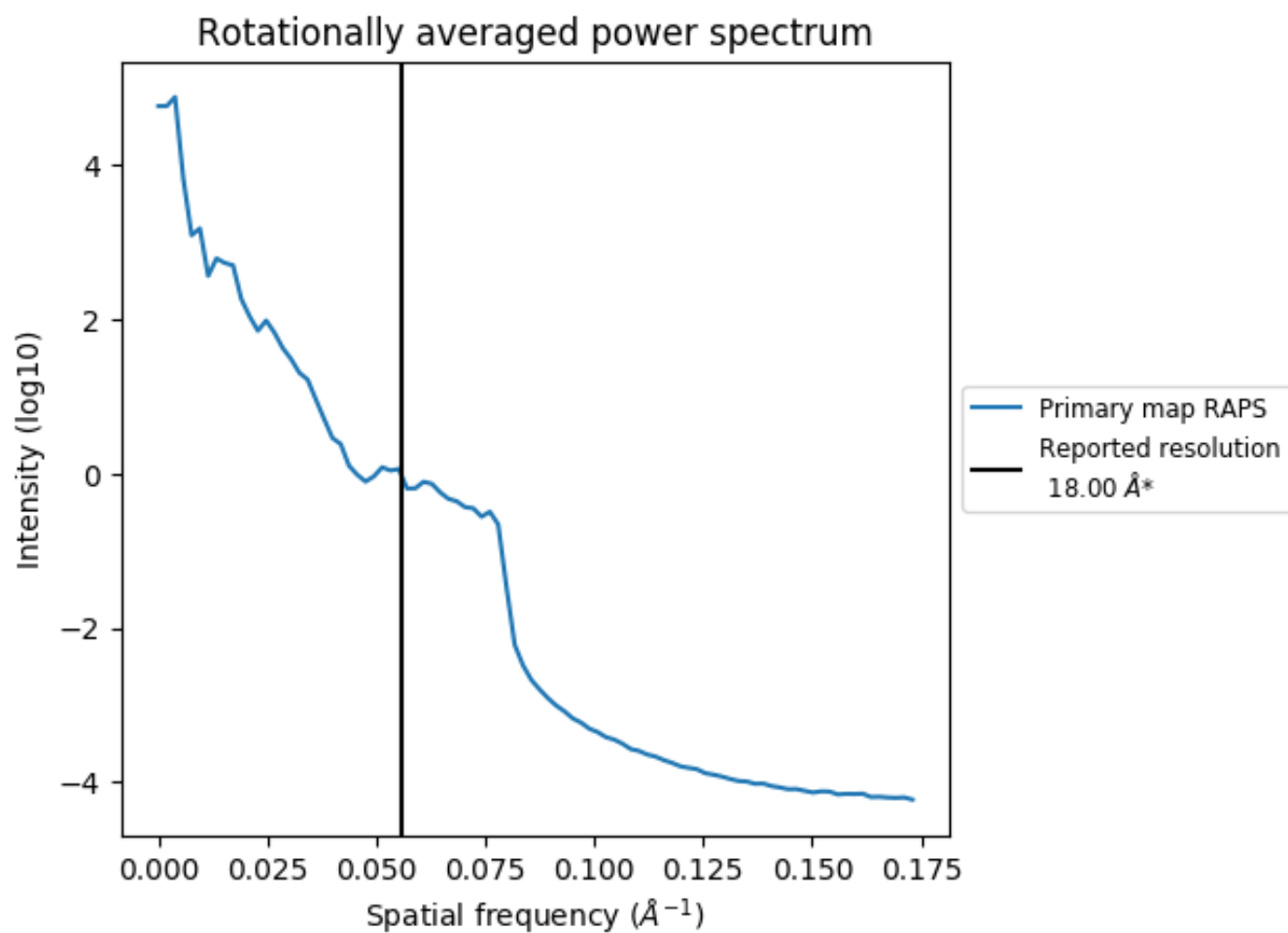
## 7.2 Volume estimate [\(i\)](#)



The volume at the recommended contour level is 12471 nm<sup>3</sup>; this corresponds to an approximate mass of 11265 kDa.

The volume estimate graph shows how the enclosed volume varies with the contour level. The recommended contour level is shown as a vertical line and the intersection between the line and the curve gives the volume of the enclosed surface at the given level.

### 7.3 Rotationally averaged power spectrum [i](#)



\*Reported resolution corresponds to spatial frequency of  $0.056 \text{\AA}^{-1}$

## 8 Fourier-Shell correlation

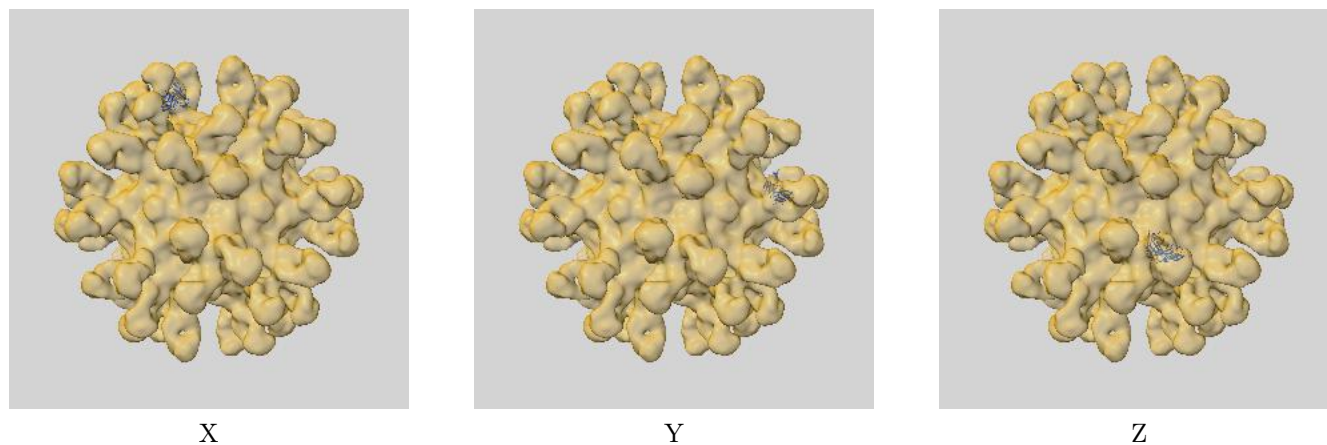
This section was not generated. No FSC curve or half-maps provided.



## 9 Map-model fit [i](#)

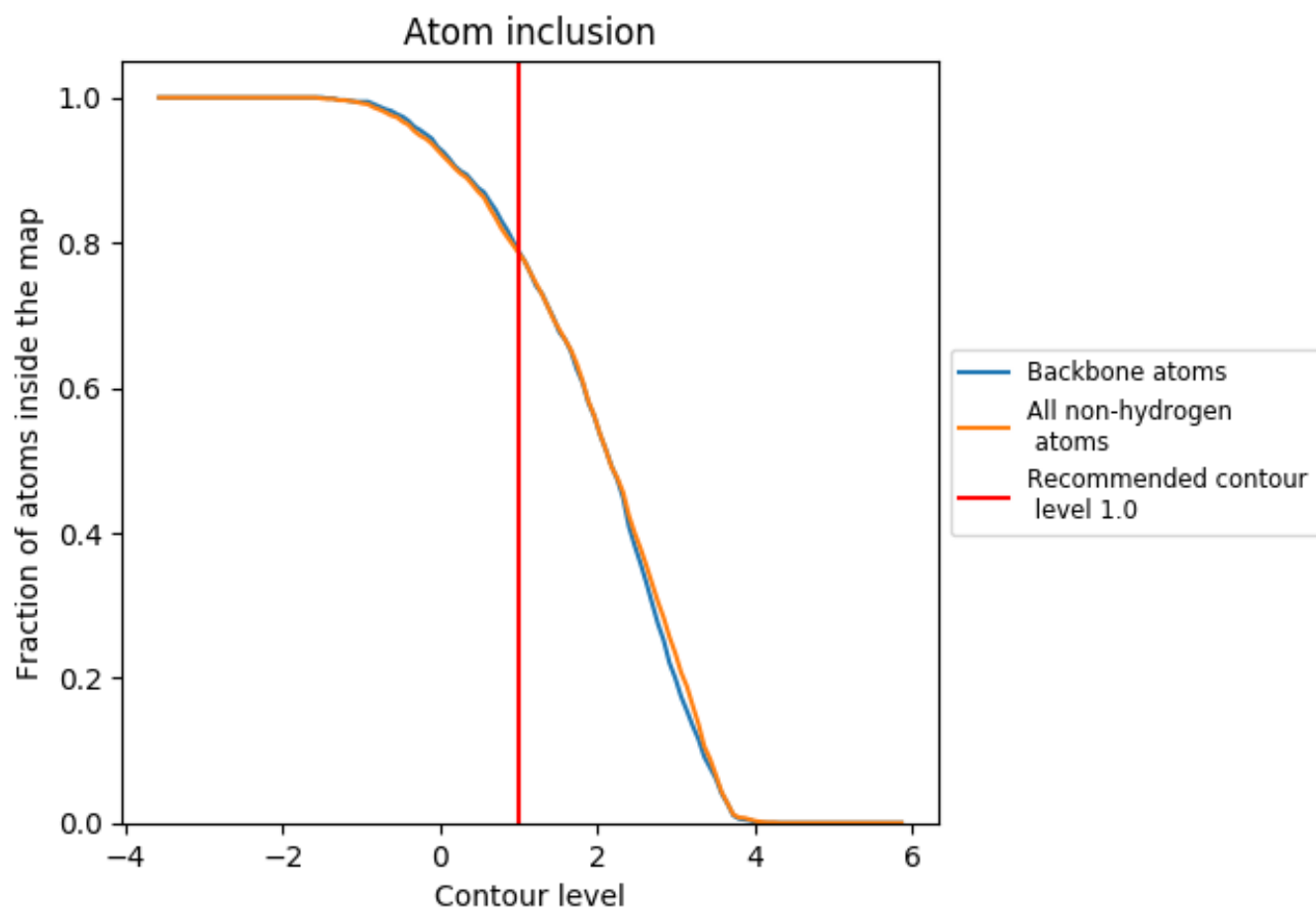
This section contains information regarding the fit between EMDB map EMD-5106 and PDB model 3IY1. Per-residue inclusion information can be found in section 3 on page 4.

### 9.1 Map-model overlay [i](#)



The images above show the 3D surface view of the map at the recommended contour level 1.0 at 50% transparency in yellow overlaid with a ribbon representation of the model coloured in blue. These images allow for the visual assessment of the quality of fit between the atomic model and the map.

## 9.2 Atom inclusion [i](#)



At the recommended contour level, 79% of all backbone atoms, 79% of all non-hydrogen atoms, are inside the map.